

Limbic system

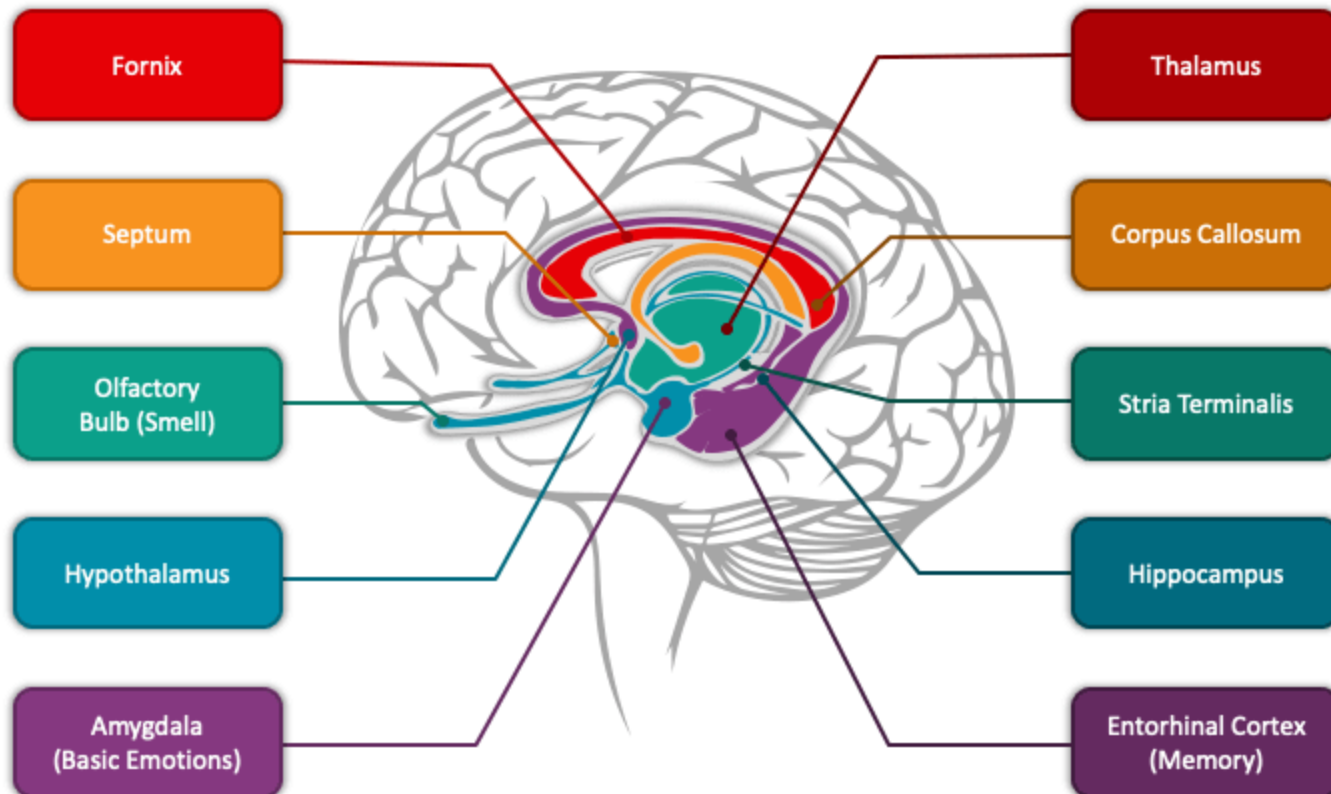
- Complex system that consists mainly of the [limbic lobe](#), cortical areas and subcortical nuclei that have connections to the limbic lobe.
- Key structures of the limbic system include:
 - [hippocampus](#)
 - [parahippocampus](#)
 - [cingulate gyrus](#)
 - basolateral nuclei of the [amygdala](#)
 - [septal nuclei](#)
 - [nucleus accumbens](#)
 - [hypothalamus](#) ([mammillary bodies](#))
 - anterior nucleus of the [thalamus](#)
- The limbic system also involves connections with the [midbrain](#) and [olfactory system](#).

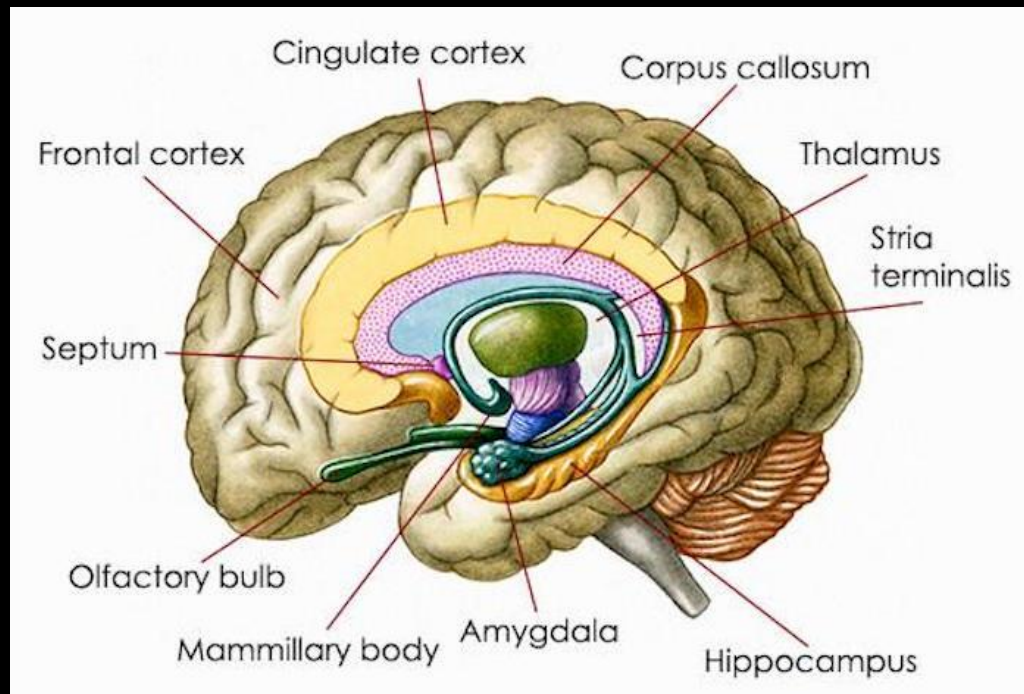
Limbic system

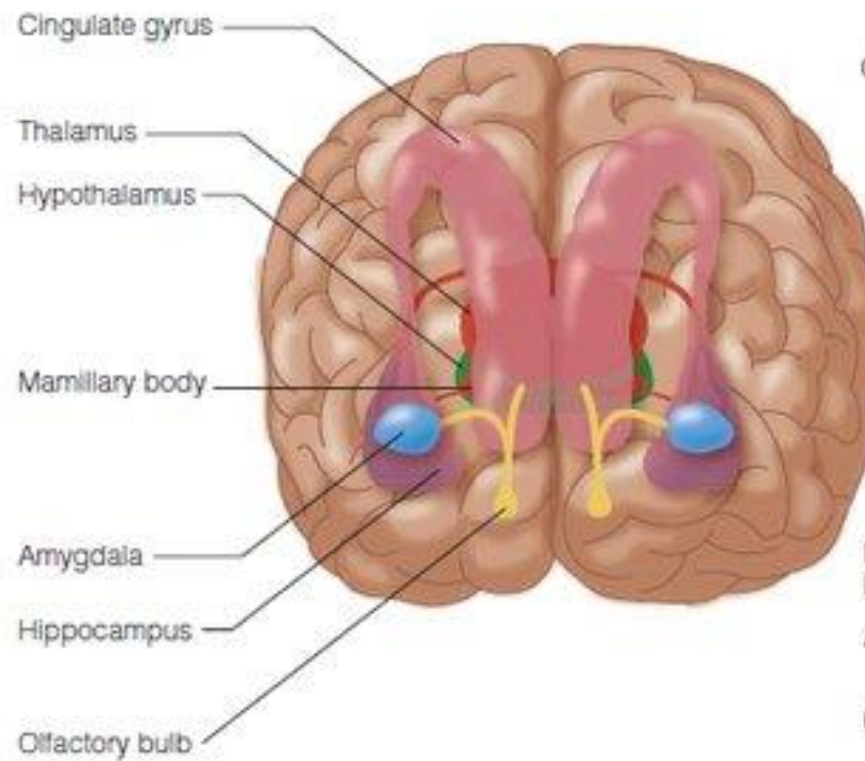
- Considered to be the epicenter of emotional and behavioral expression.
- A quick way to remember the functions of the limbic system is to think about five “F’s”:
 - Feeding (satiety & hunger)
 - Forgetting (memory)
 - Fighting (emotional response)
 - Family (sexual reproduction and maternal instincts)
 - Fornicating (sexual arousal)

LIMBIC SYSTEM

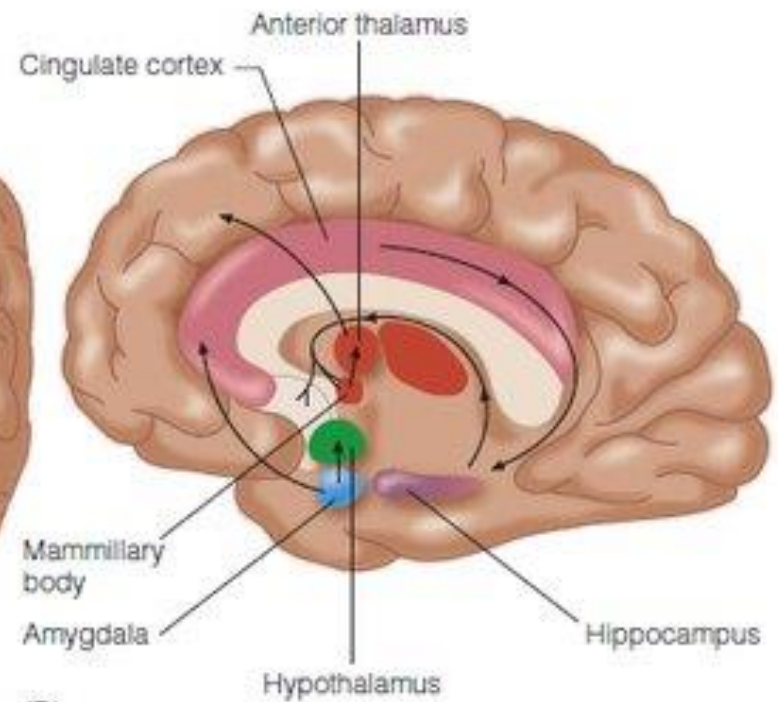
Enter your sub headline here





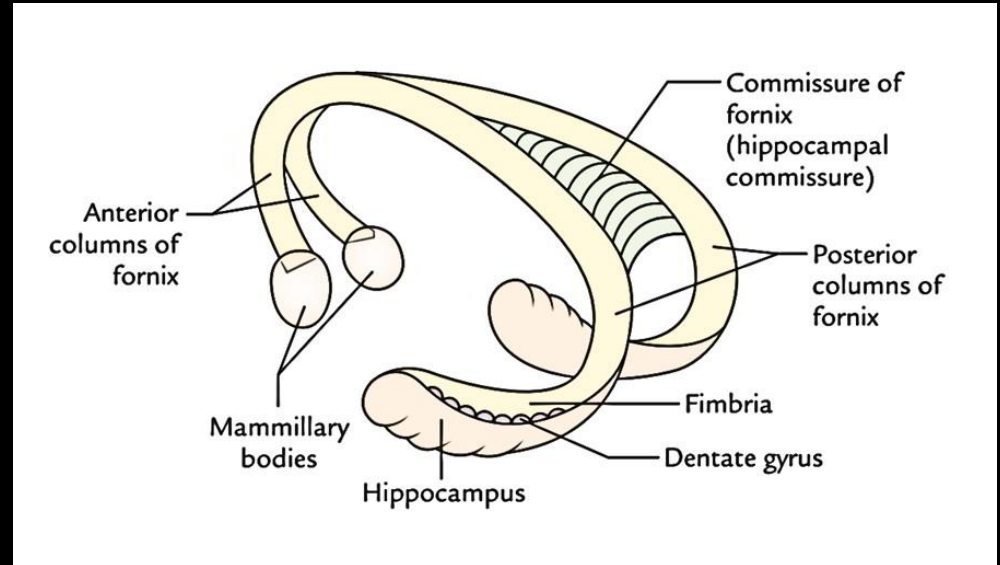
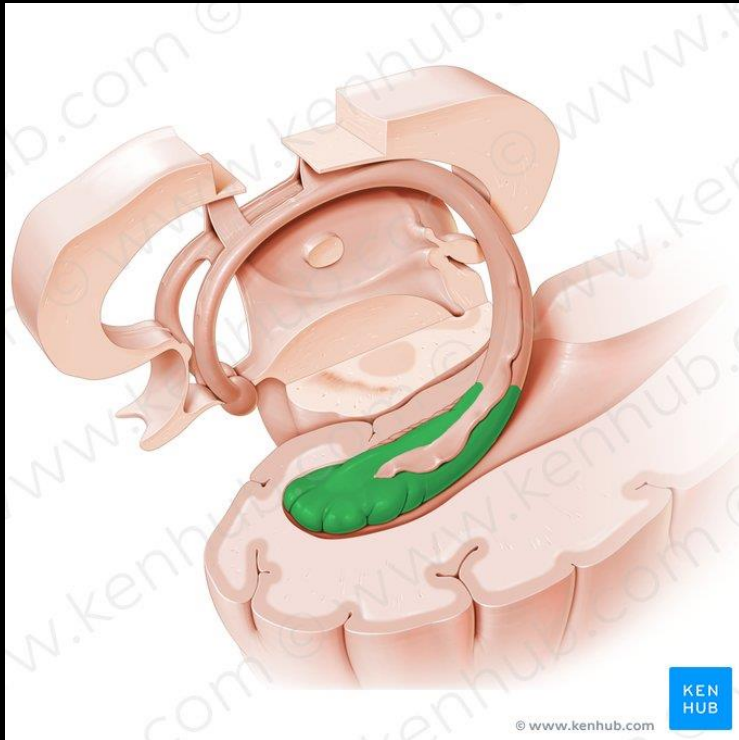


(A)

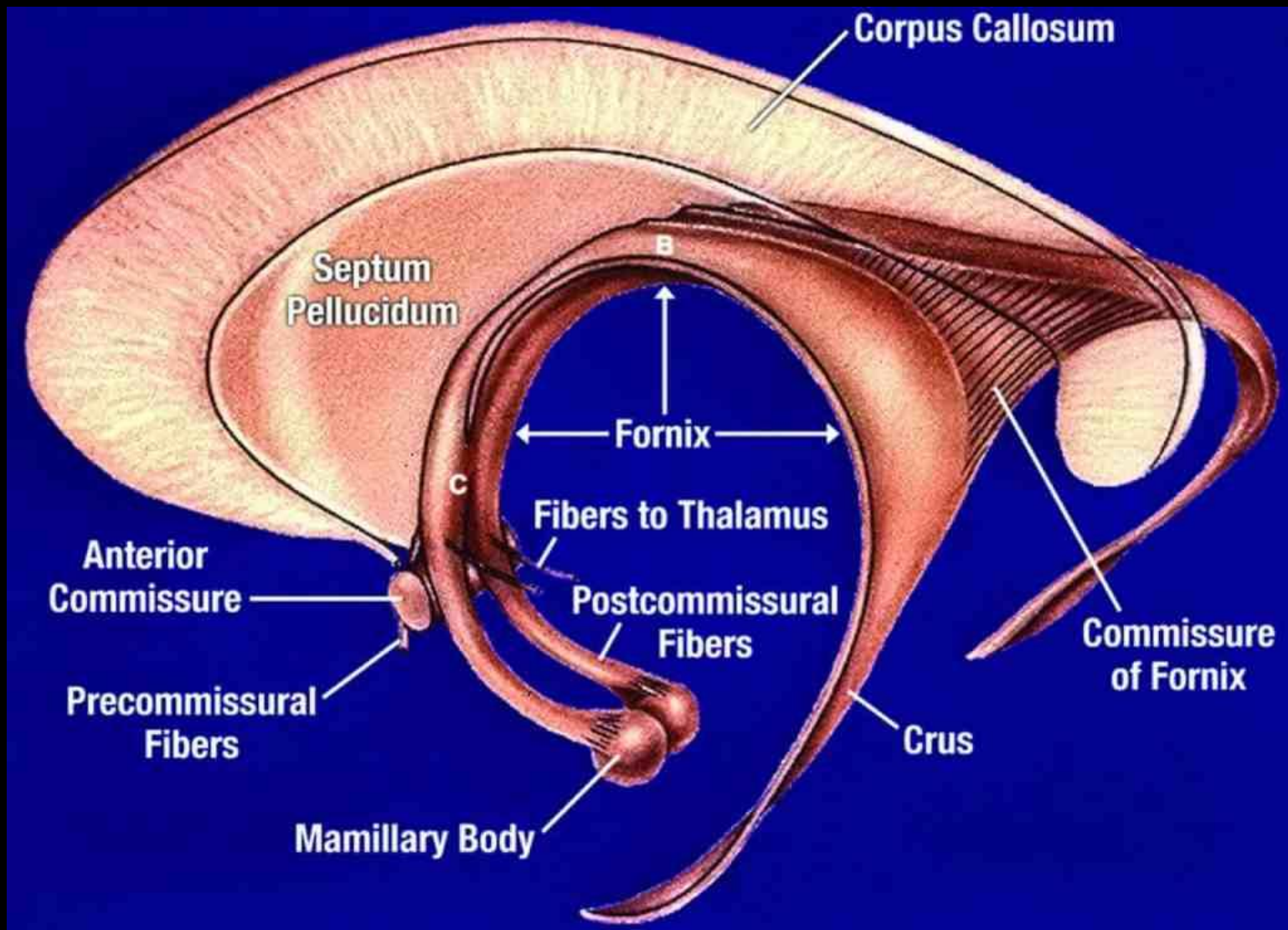


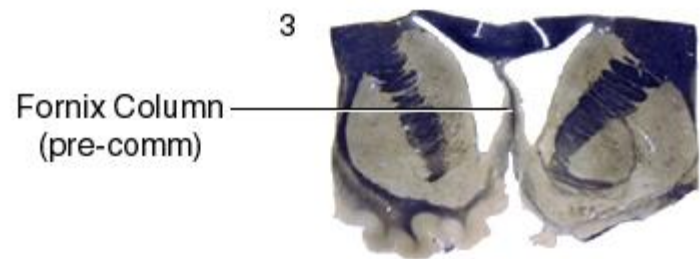
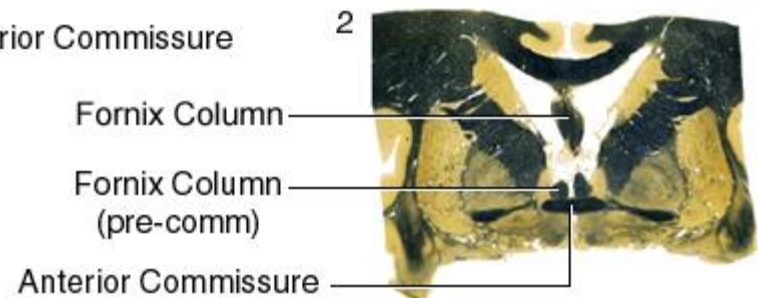
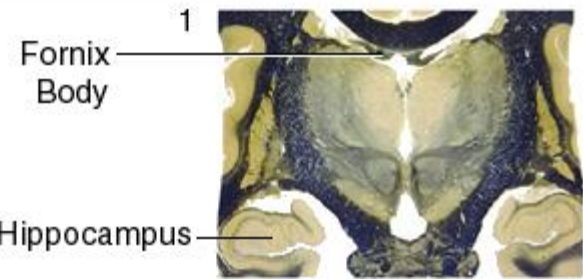
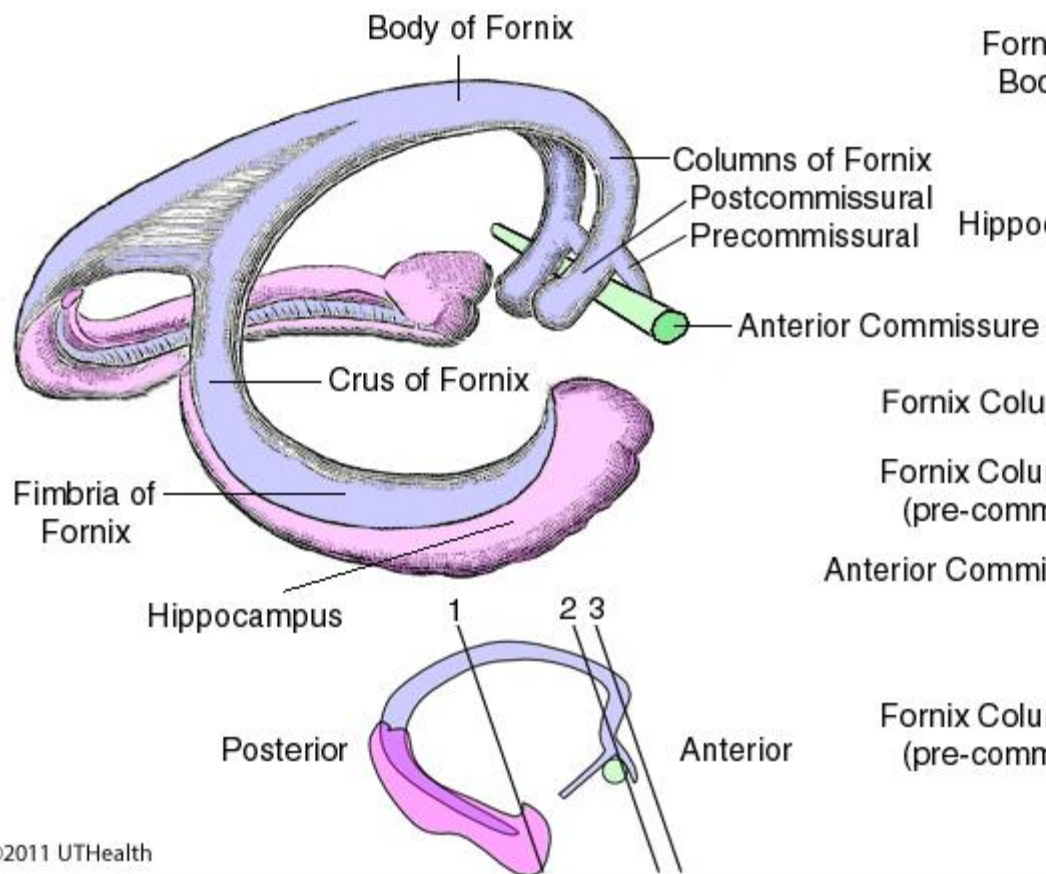
(B)

Hippocampus

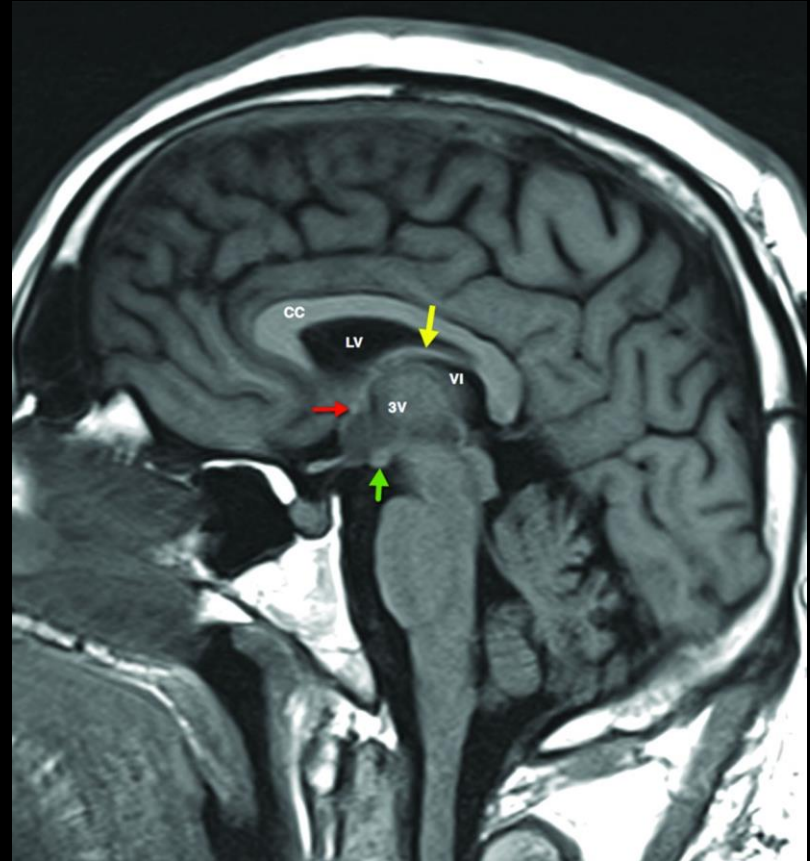


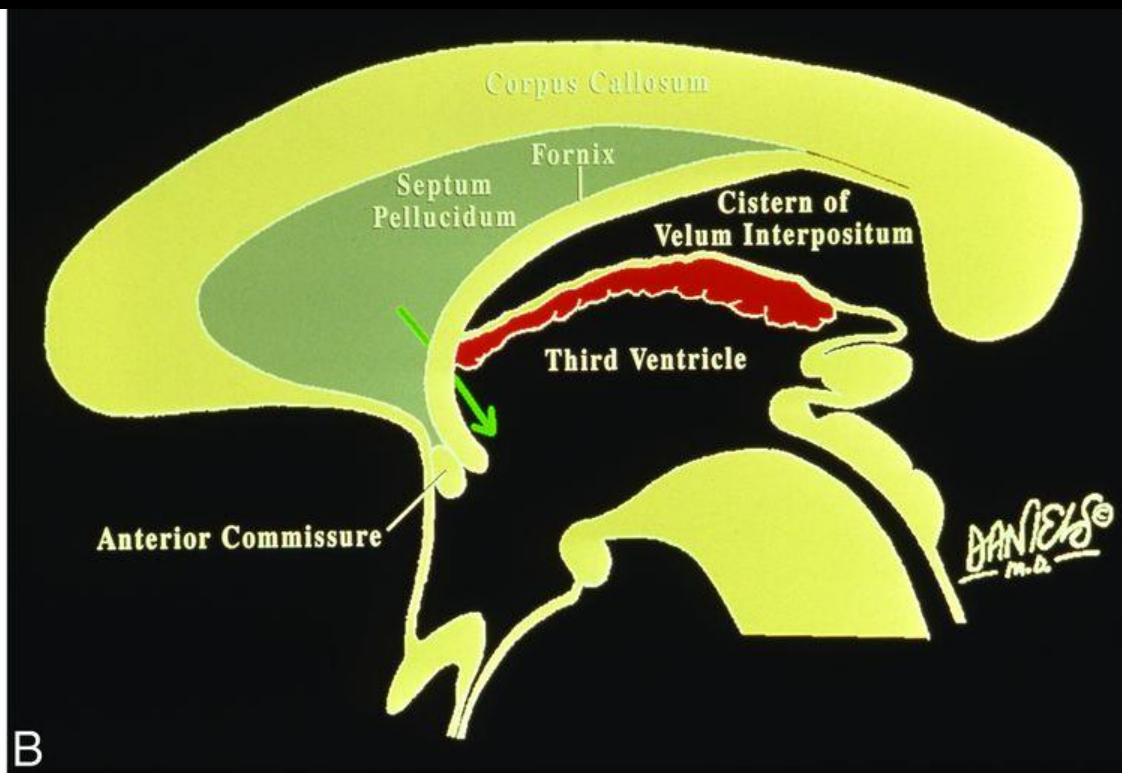
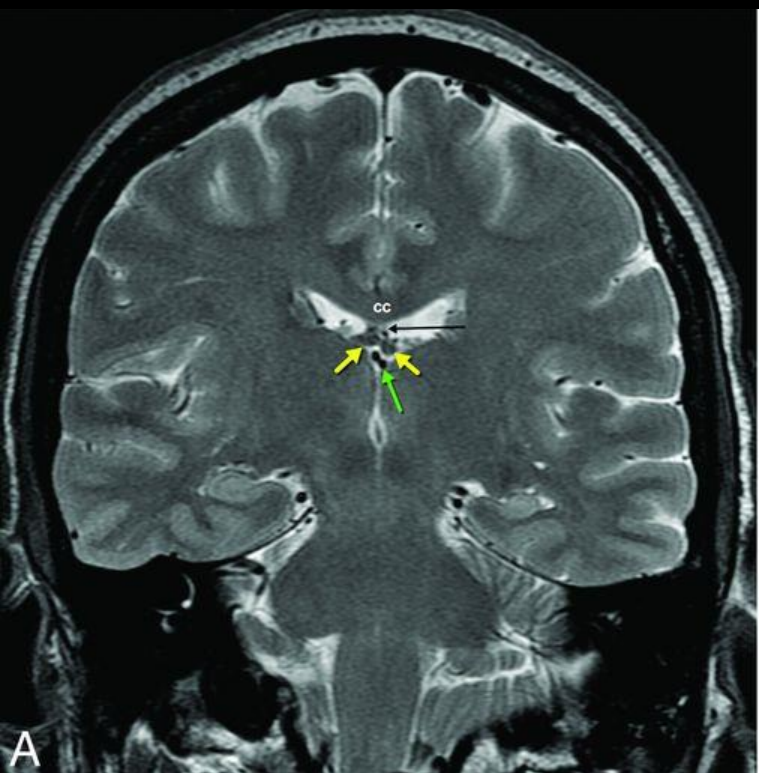
- Bundle of grey matter
- Residing in the floor of the temporal horn of the lateral ventricle; that resembles a ram's horn



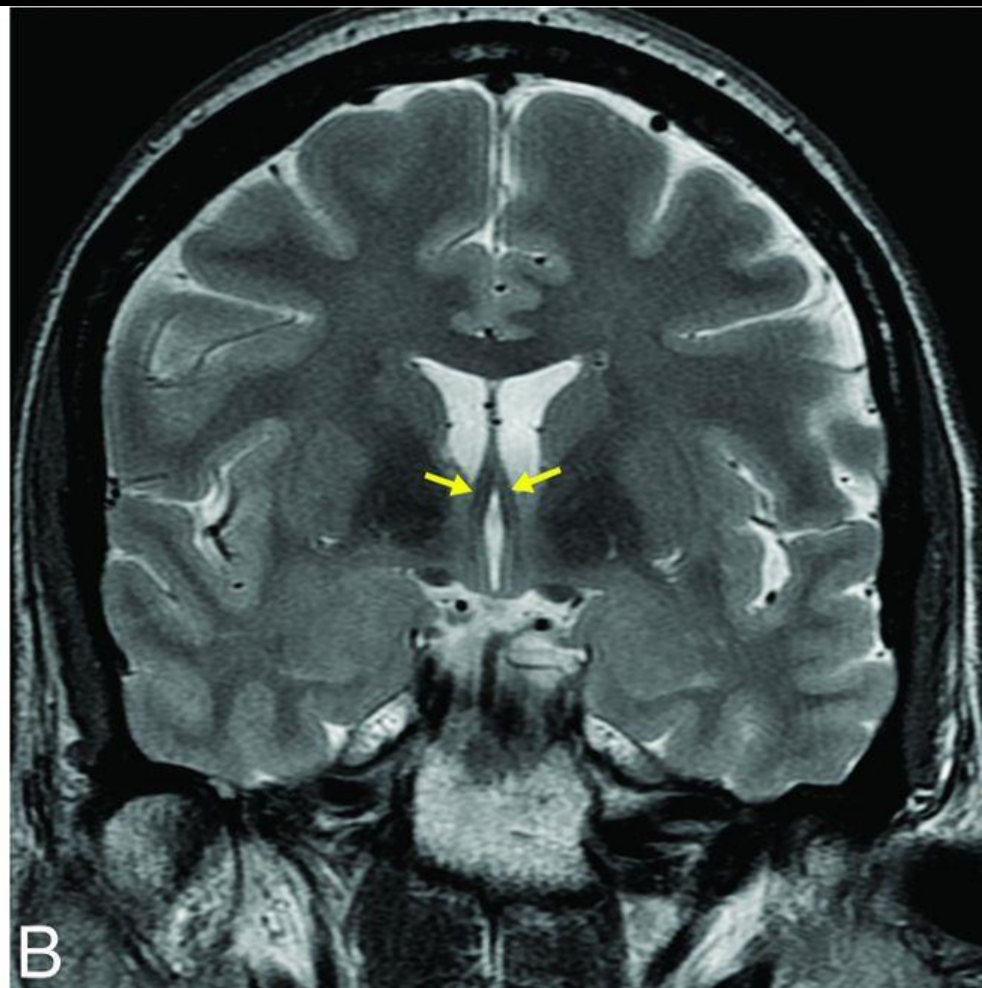
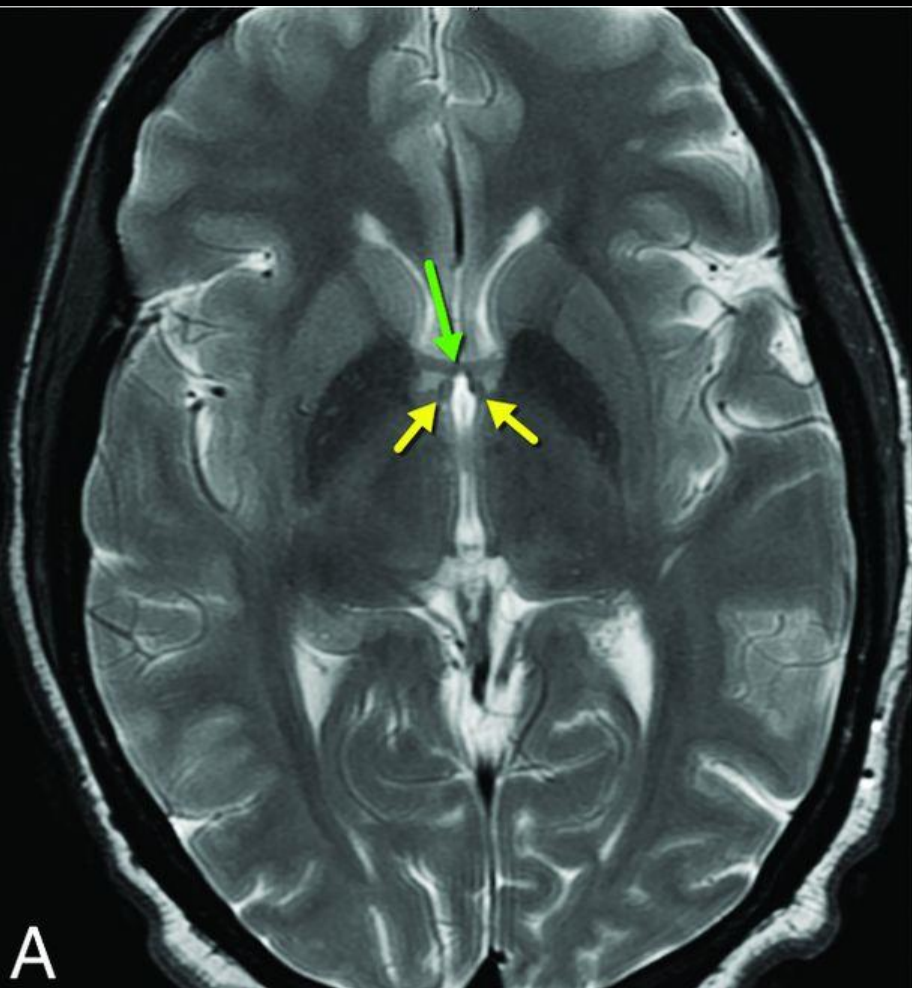


Sagittal T1-weighted image showing the archlike configuration of the fornix (*yellow arrow*) at the upper margin of the velum interpositum (VI), which is situated between the lateral (LV) and third (3V) ventricles. The fornix is attached to



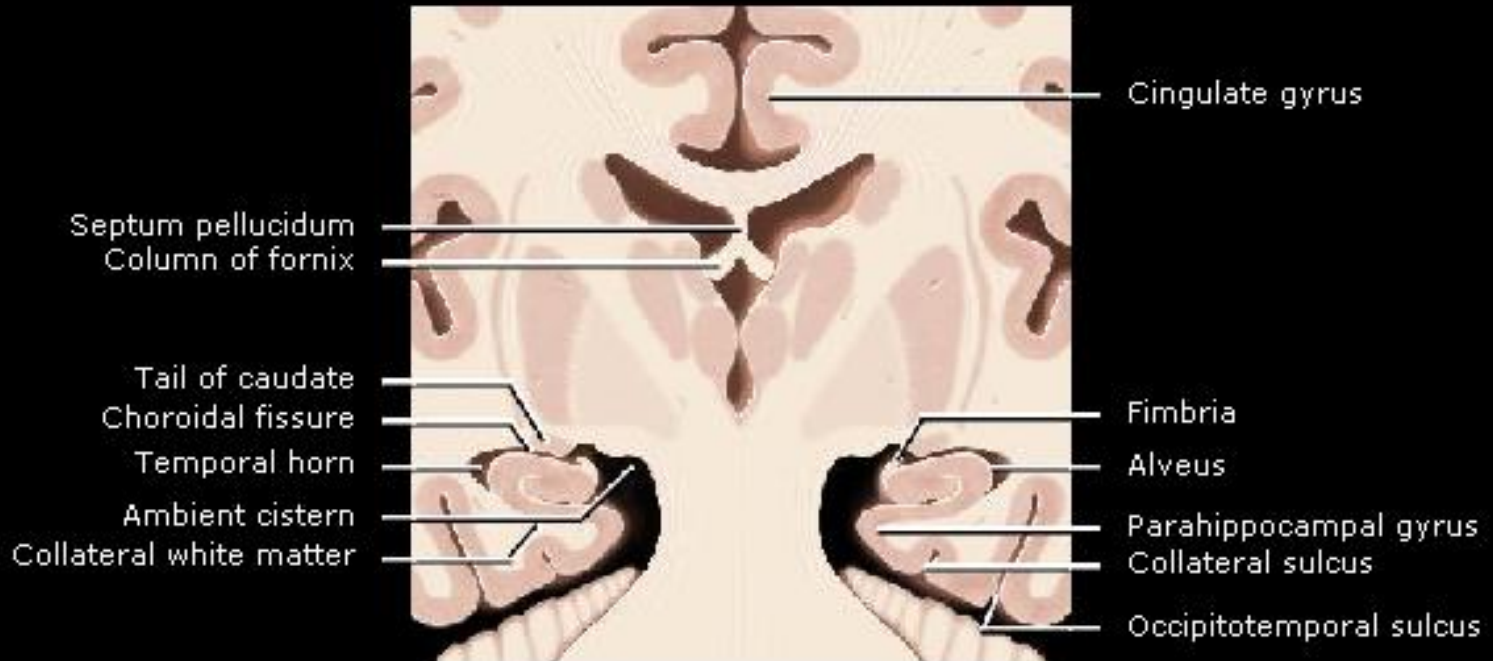


Coronal T2-weighted image shows the body of the fornices (*yellow arrows*) attached to the inferior margin of the body of the corpus callosum (CC) via the septum pellucidum (*black arrow*). The body of the fornices are at the upper aspect of the velum interpositum, which is traversed by the internal cerebral veins (*green arrow*), situated above the third ventricle but inferomedial to the body of the lateral ventricles. *B*, Sagittal schematic shows the position of the fornix relative to the velum interpositum. The foramen of Monro (*green arrow*) forms the anterior border of the velum interpositum, while the posterior border opens between the splenium of the corpus callosum above and the pineal gland below into the quadrigeminal plate cistern. The choroid plexus (red) is indicated at the roof of the third ventricle below but not within the velum interpositum.

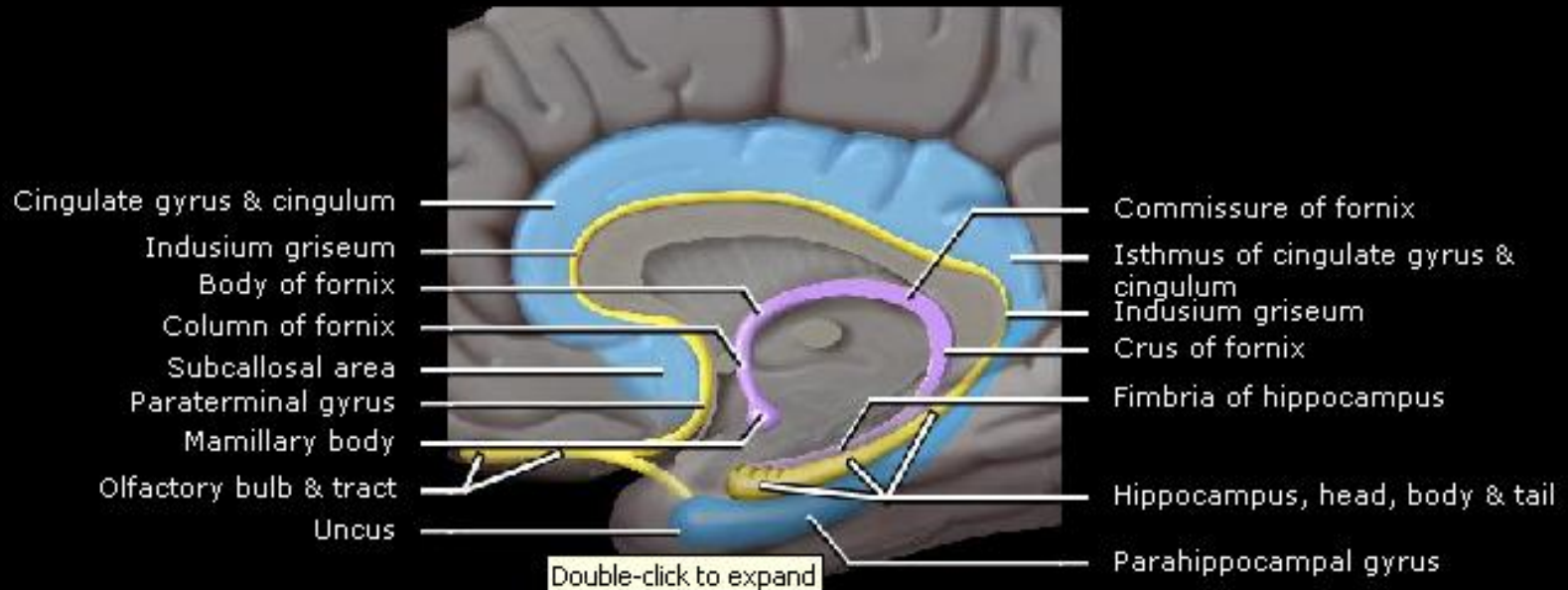


A, Axial T2-weighted image shows the postcommissural fibers of the fornix (*yellow arrows*) coursing

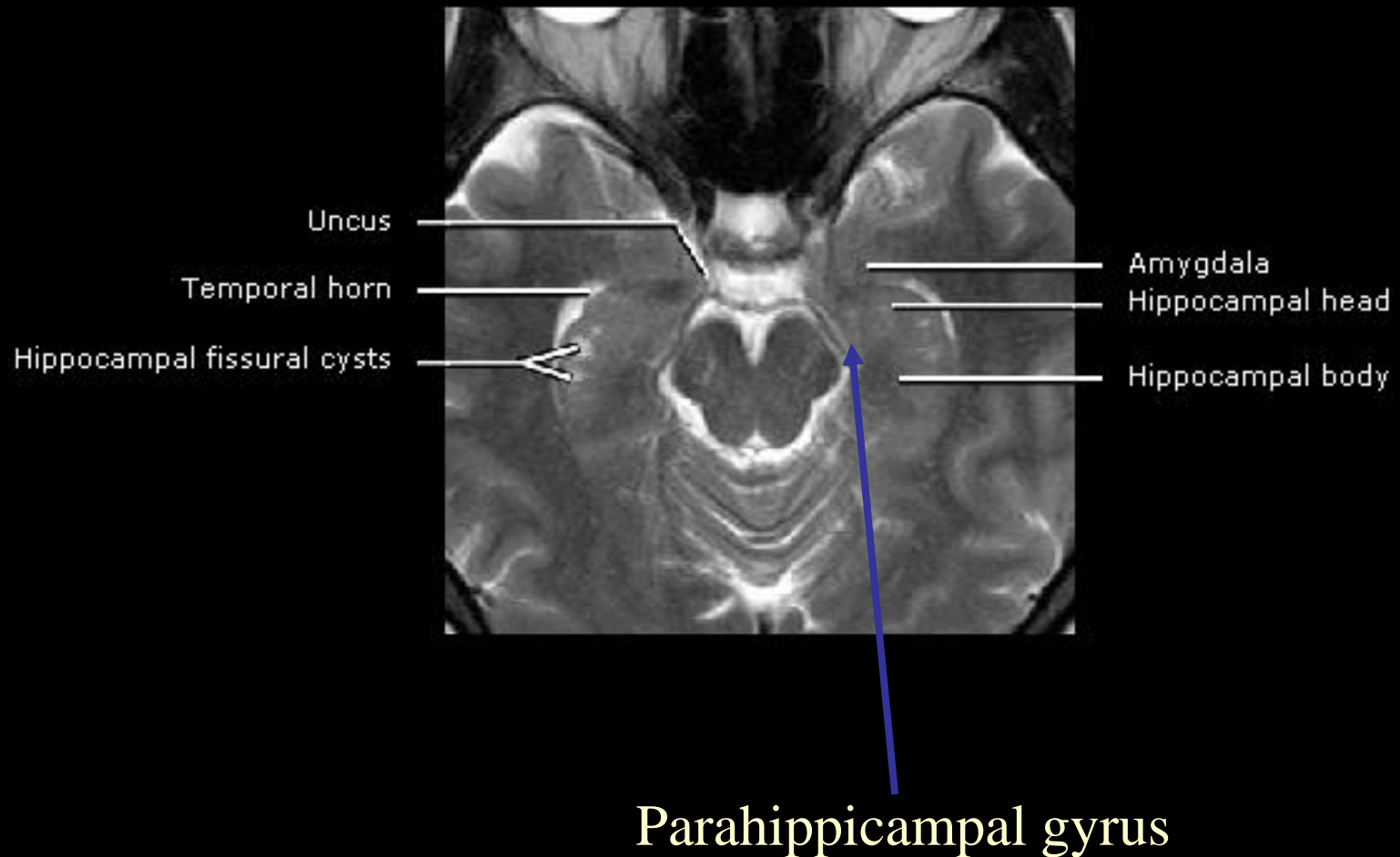
Limbic System



Limbic System

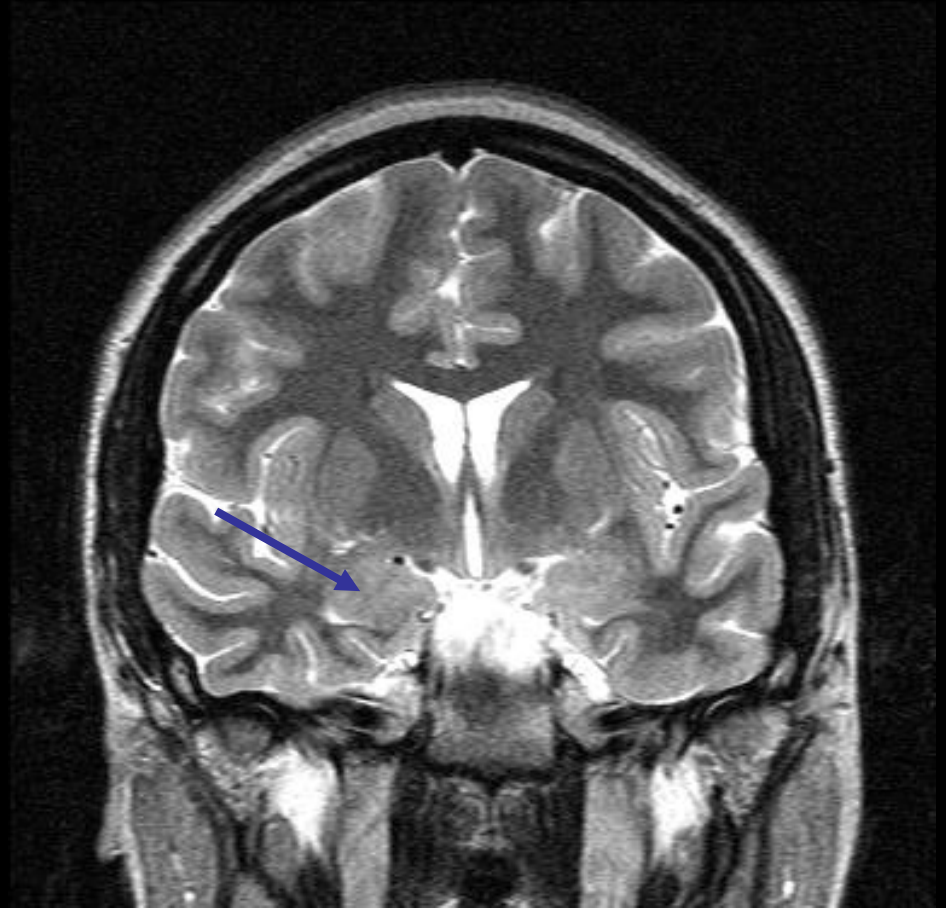


Limbic System



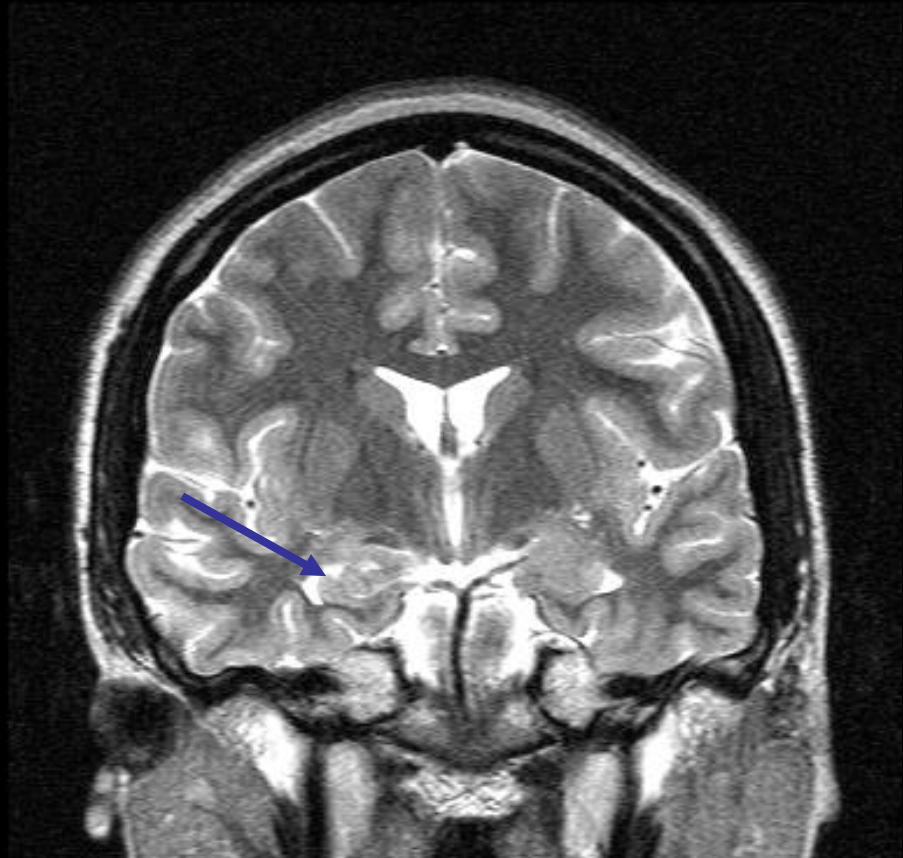
Amygdala

- Almond/blob in front of hippocampal head

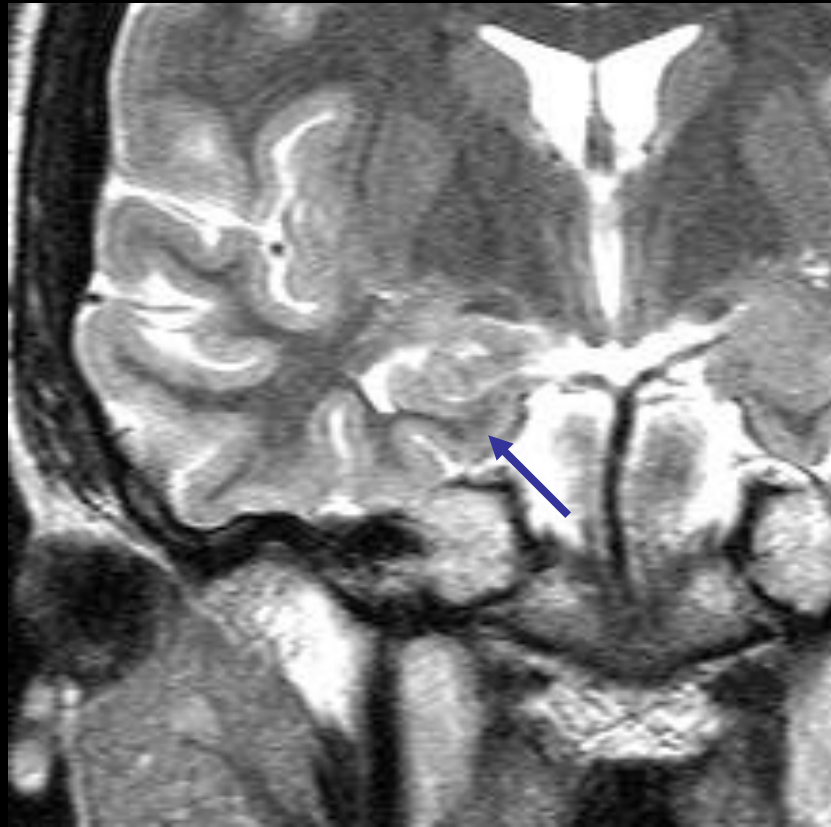


Hippocampal head

- Just posterior to amygdala

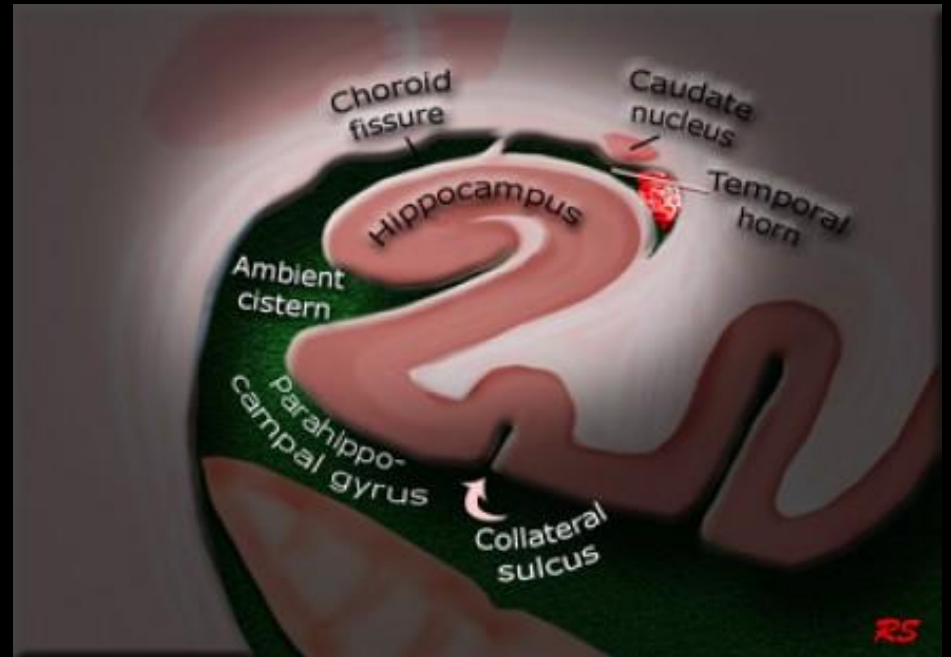
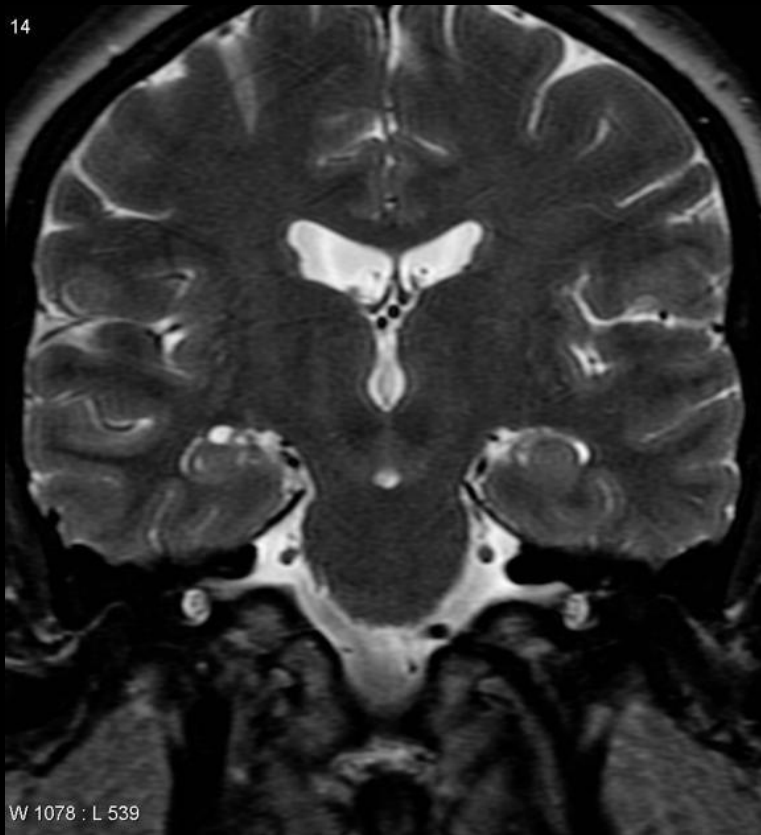


Parahippocampal gyrus



Choroid Fissure

14



Choroidal fissure cyst

- Represent either an arachnoid, neuroglial or neuroepithelial cyst
- Location based diagnosis rather than a distinct pathological entity.

