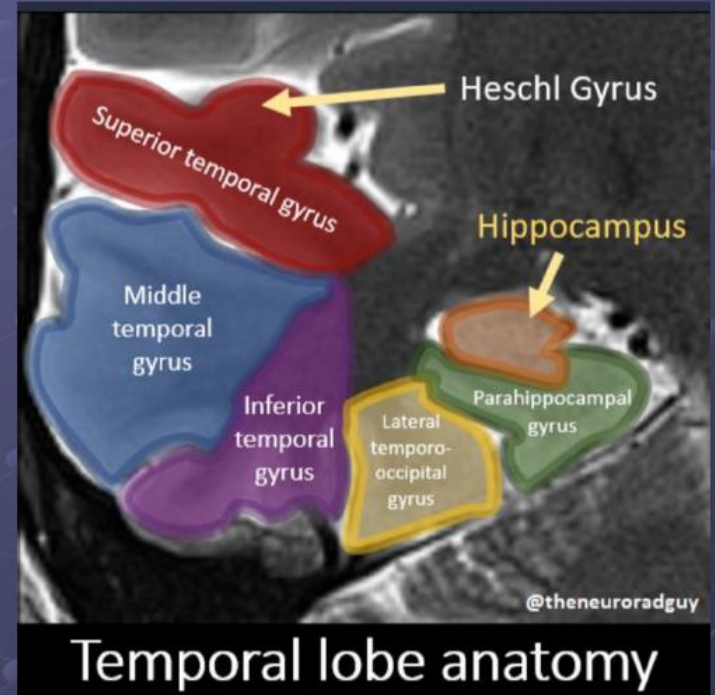
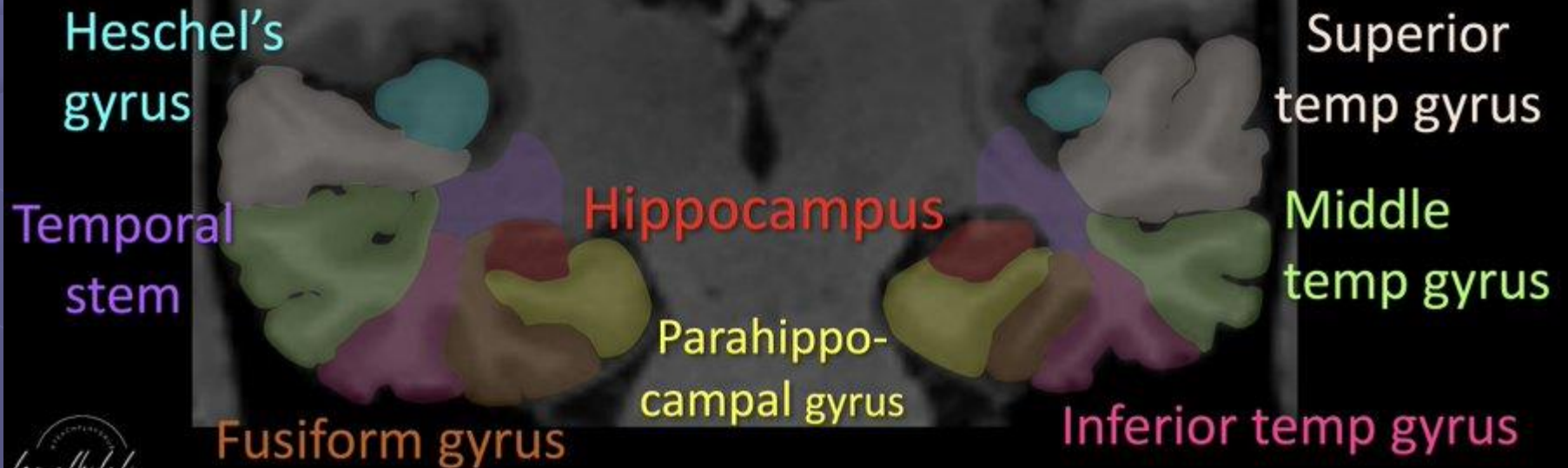


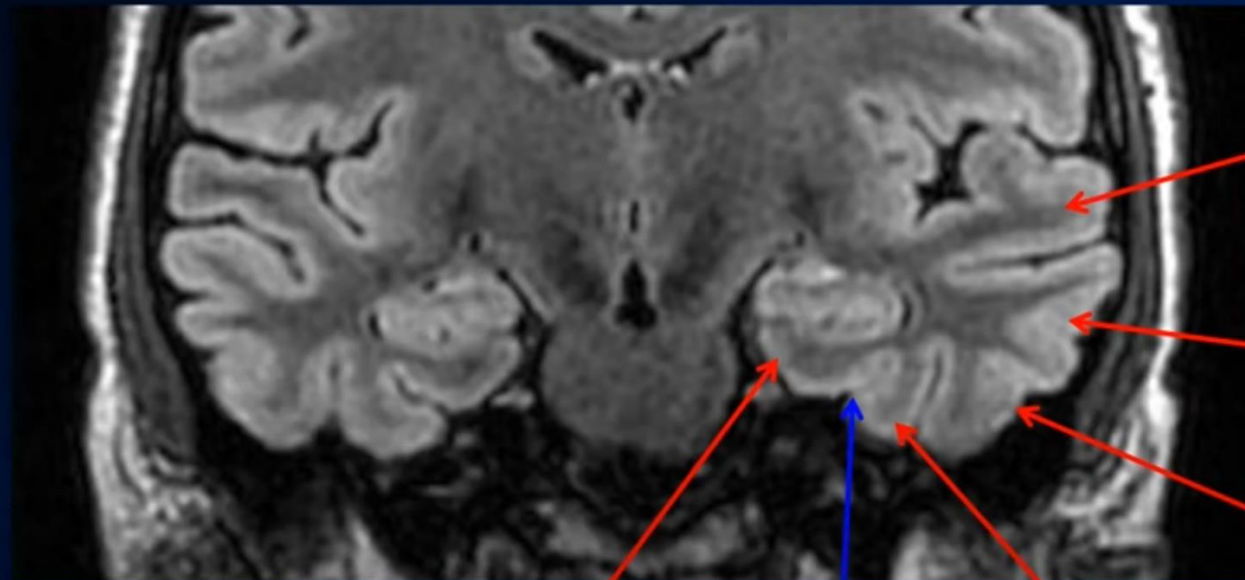
Temporal Lobe

- Old part of Brain
 - Hippocampus
 - Parahippocampal gyrus
- Fusiform gyrus (fuses old and New)
 - = (*lateral occipitotemporal gyrus*)
- Neo Cortex (new)
 - Superior temporal gyrus
 - Middle temporal gyrus
 - Inferior temporal gyrus
- Heschl gyrus (Transverse temporal gyrus)



Temporal Lobe Anatomy





6 Superior
Temporal gyrus

5 Middle
Temporal gyrus

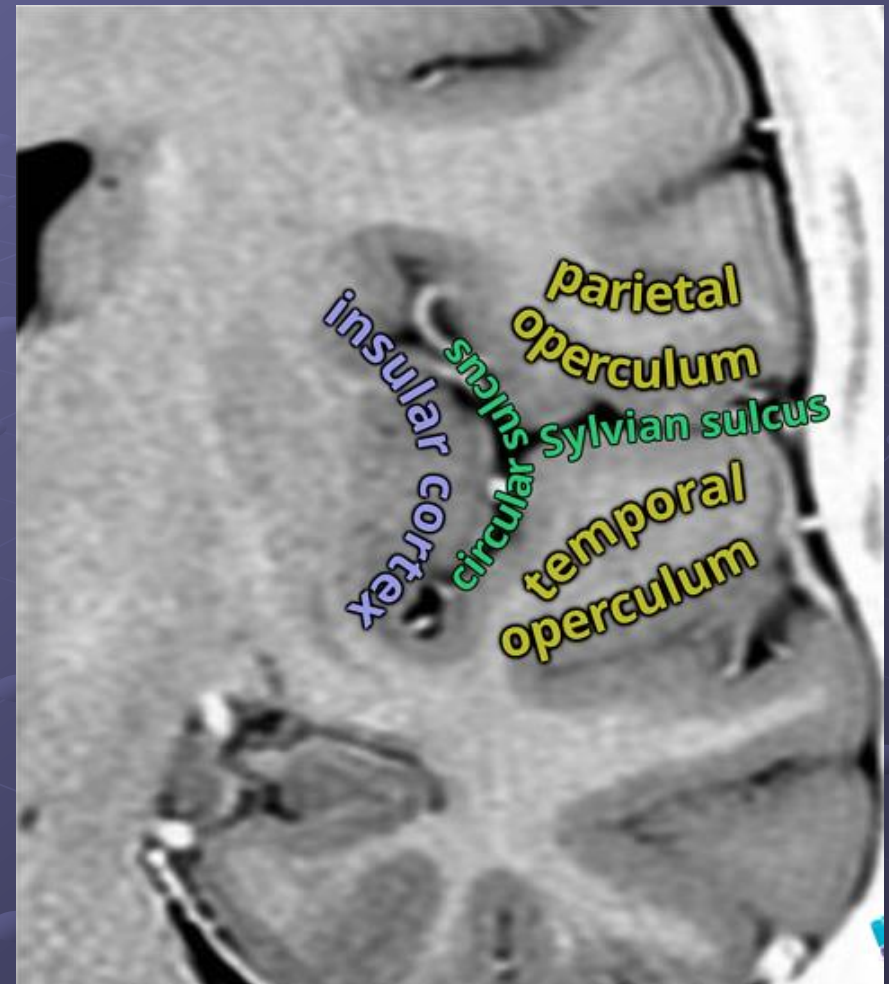
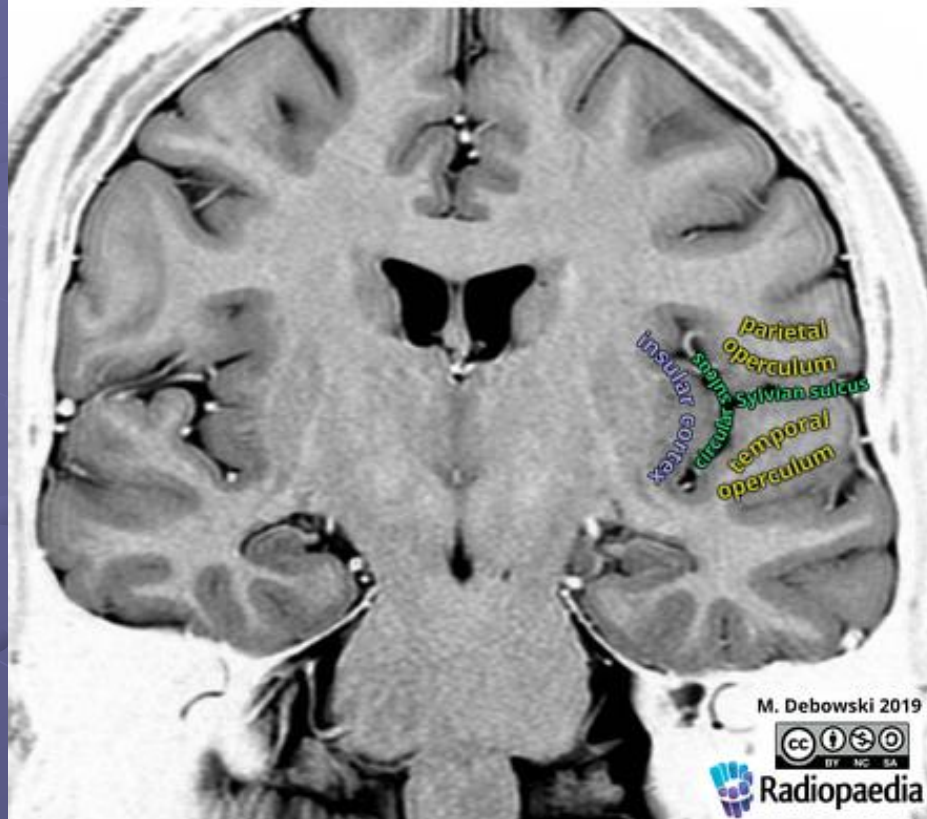
4 Inferior
Temporal gyrus

1 Parahippocampal
gyrus

2 Collateral
Sulcus

3 Fusiform
gyrus

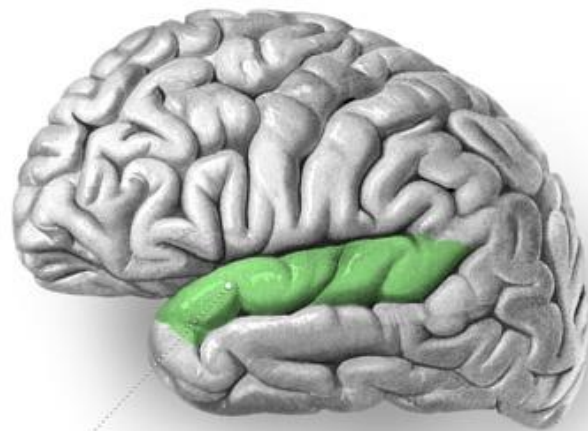
Insula and operculum



Wernicke's area

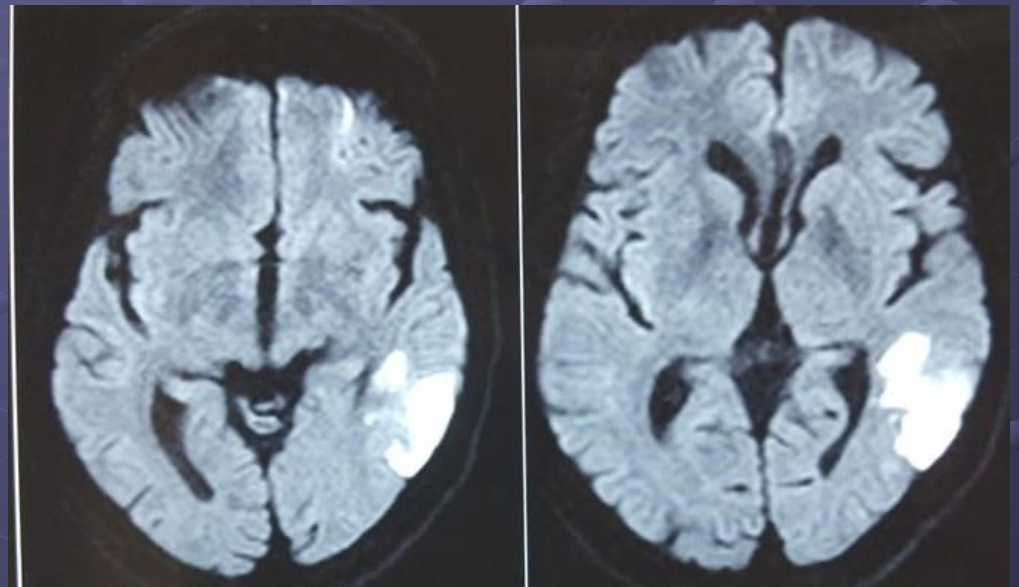
- Involved in the understanding of written and spoken language.
 - Posterior section of the **superior temporal gyrus** (STG)
- Dominant cerebral hemisphere
 - Left hemisphere in about **95% of right-handed individuals** and
 - **60% of left-handed** individuals.
- Fluent aphasia.
 - Major impairment of language comprehension, while speech retains a natural-sounding rhythm and a relatively normal syntax.

Superior temporal gyrus

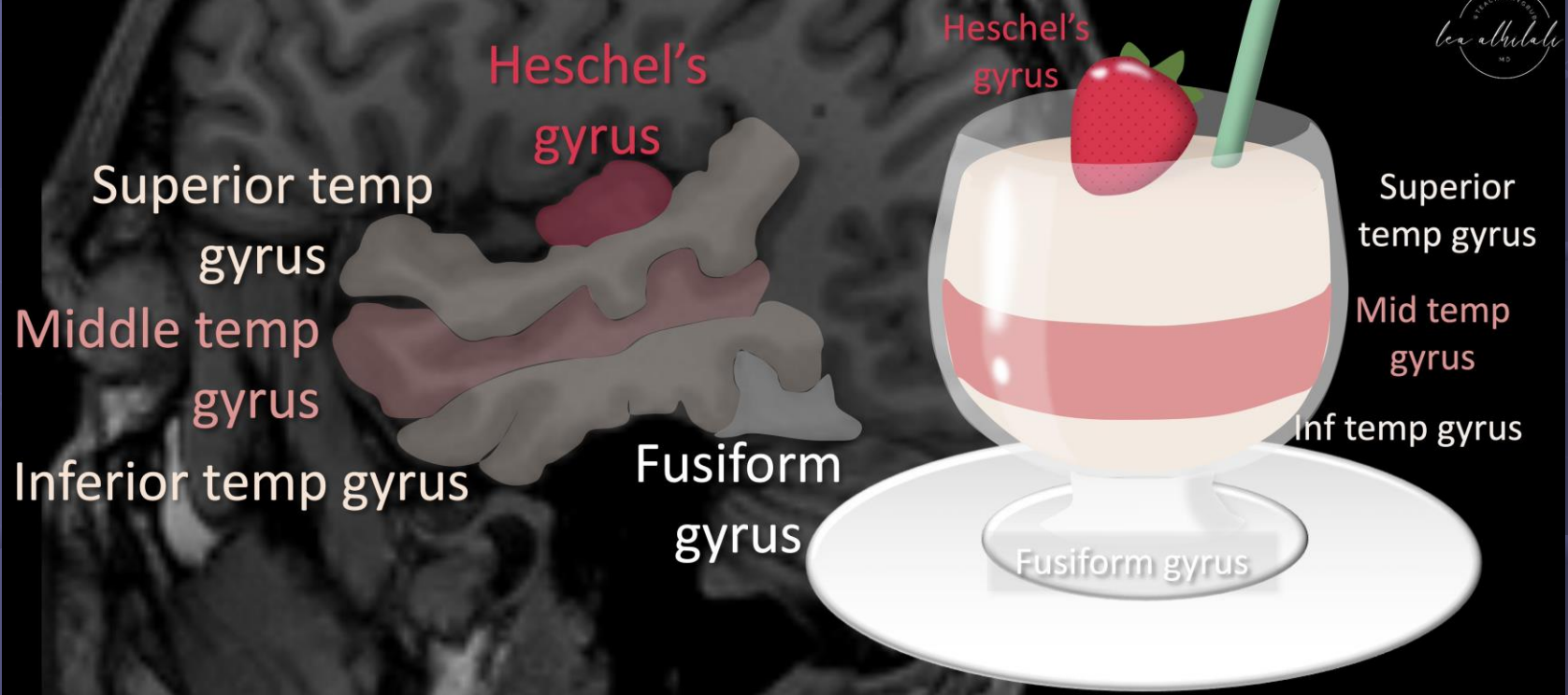


Superior temporal gyrus

Adapted from illustration from "Sobotta's Textbook and Atlas of Human Anatomy" 1908, now in the public domain.

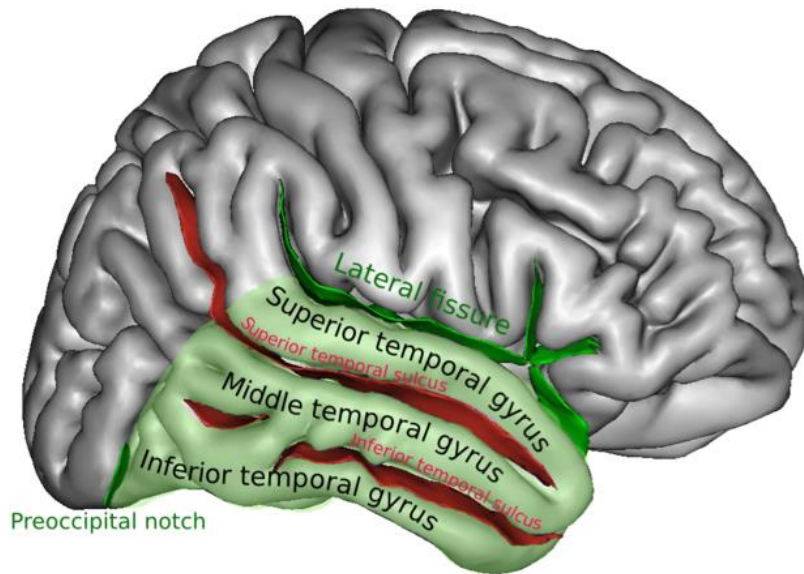


Lateral neocortex looks like a parfait w/a strawberry on top!

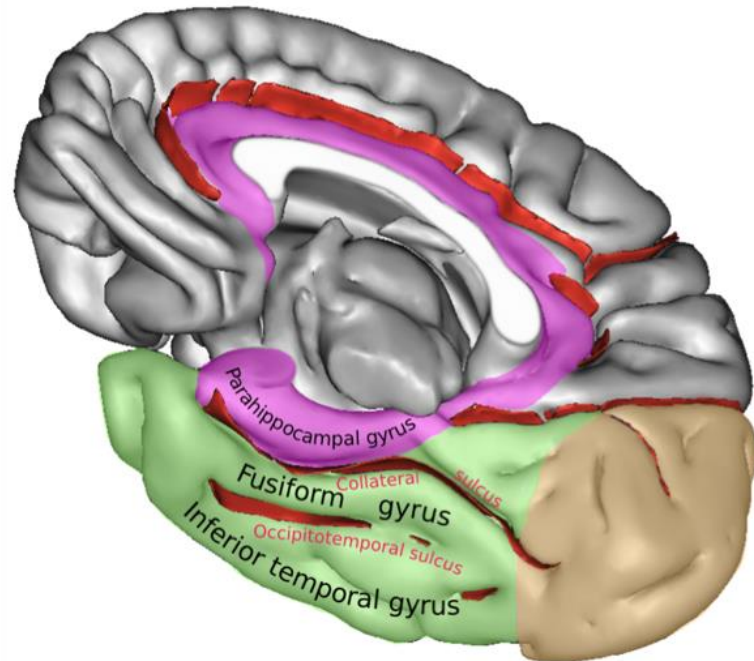


Temporal lobe

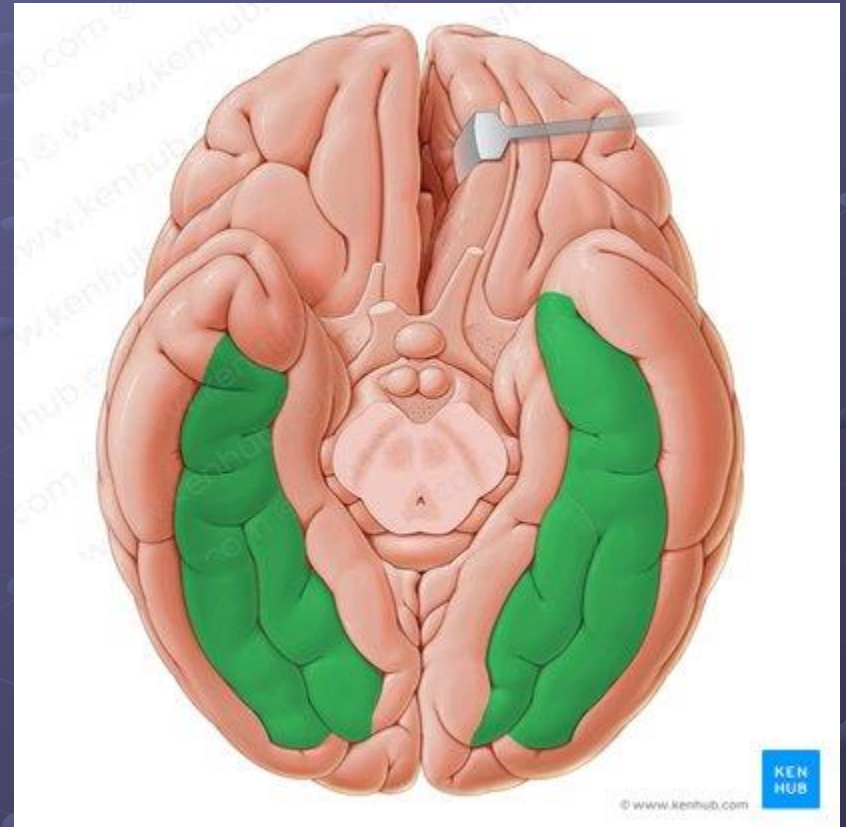
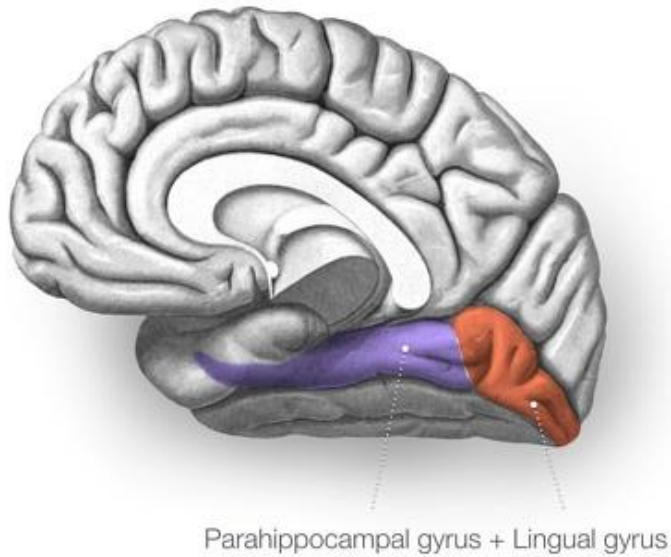
LATERAL VIEW



MIDSAGITTAL & OBLIQUE VIEW



Medial occipitotemporal gyrus



Fusiform gyrus (*lateral occipitotemporal gyrus*)

