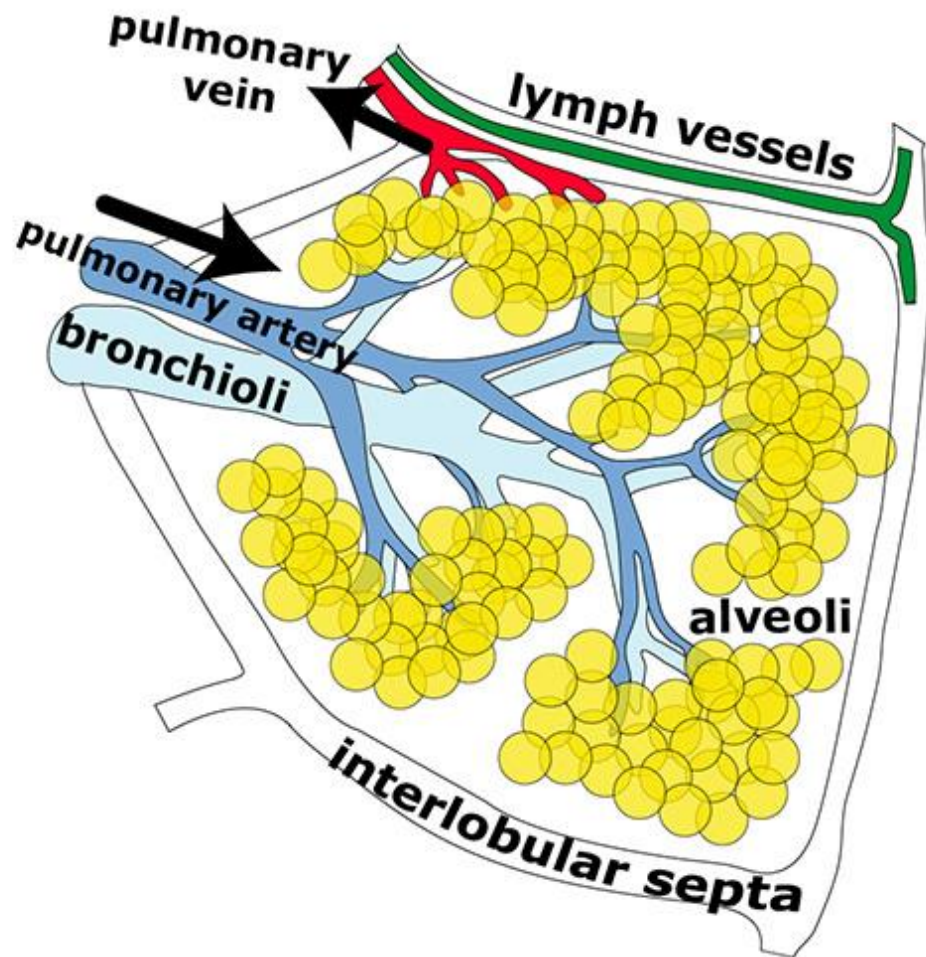
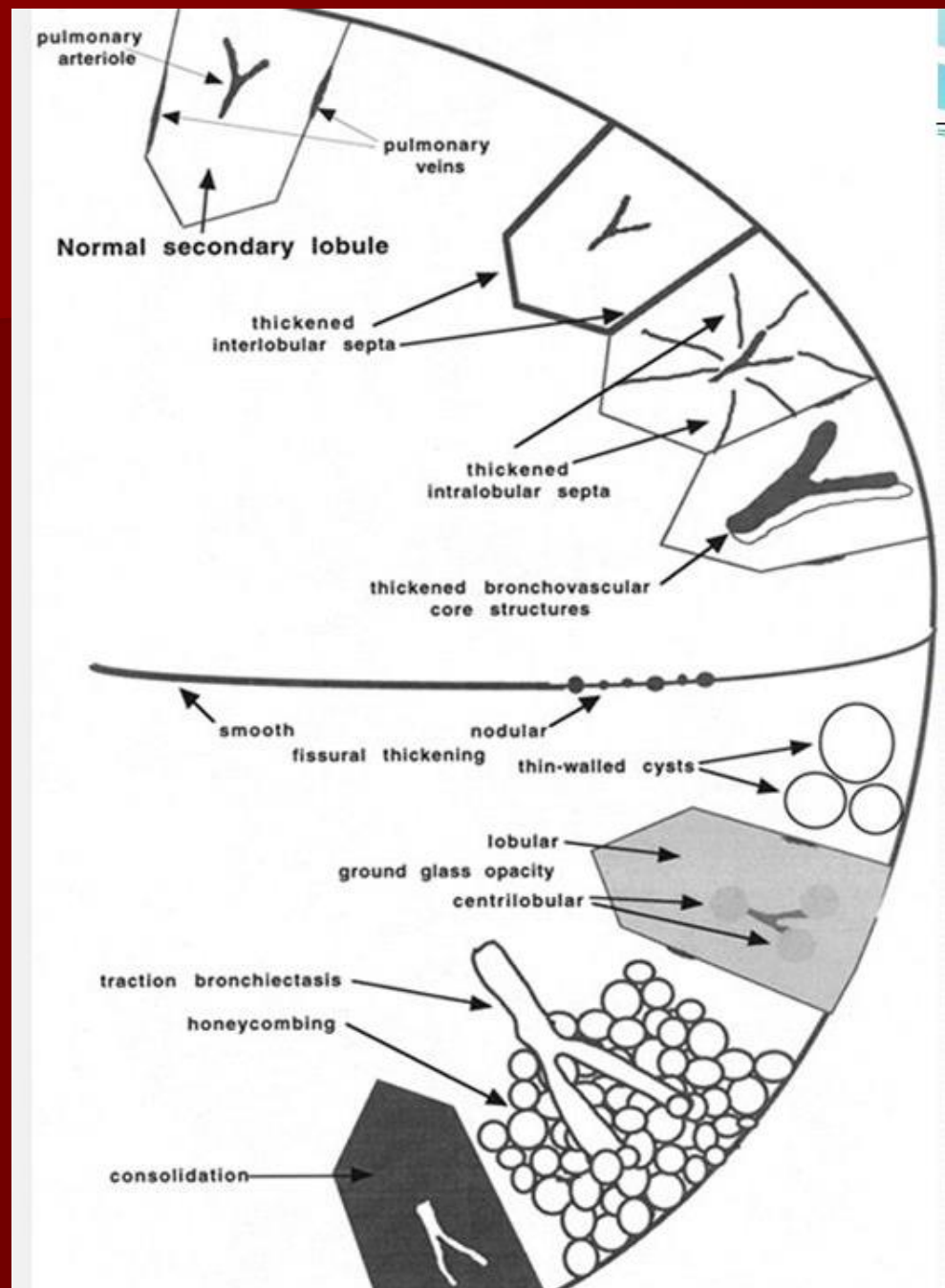


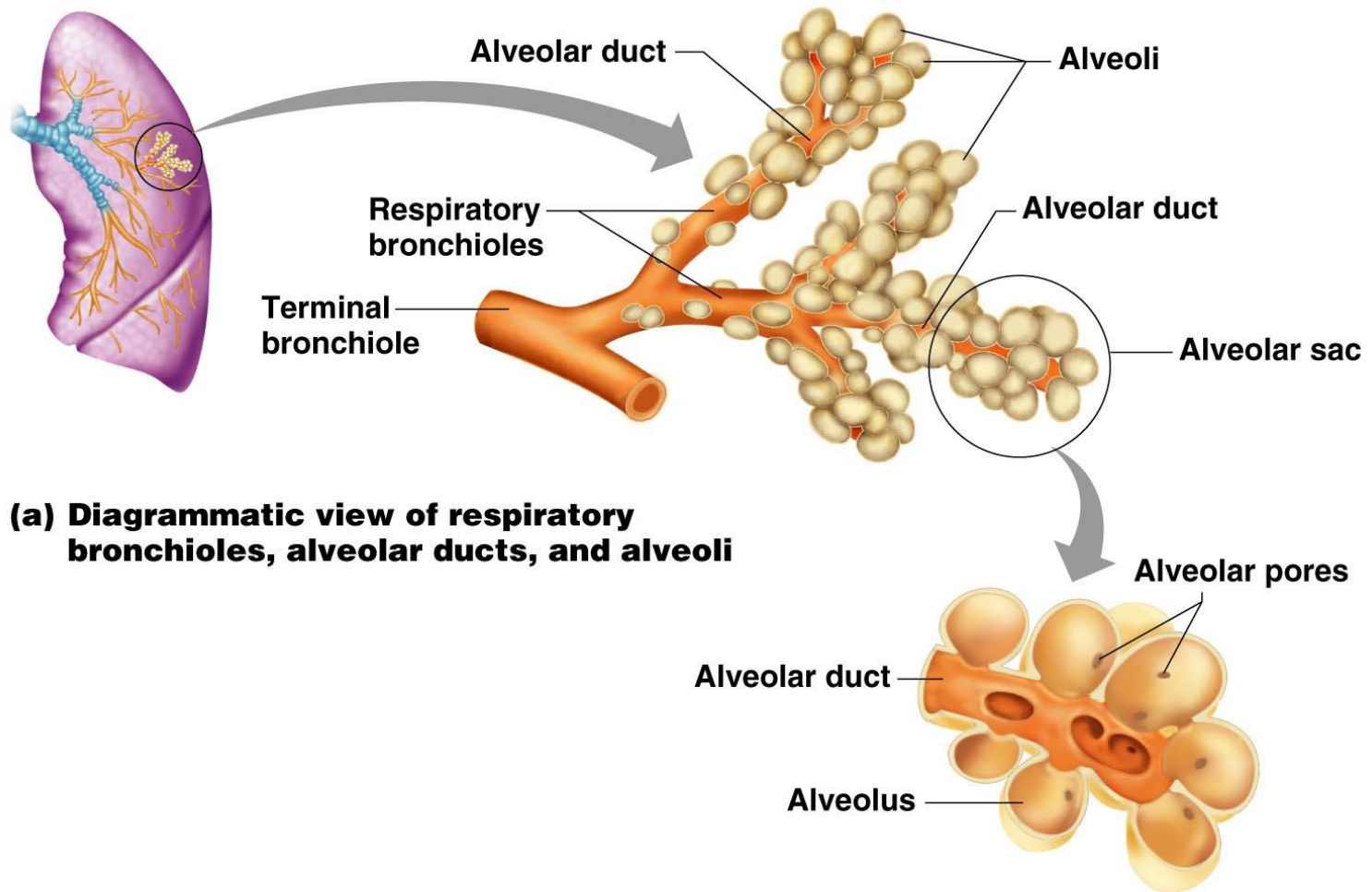
Secondary pulmonary

- Polyhedral in shape bounded by fibrous septa (the interlobular septa)
- Each lobule contains up to a dozen acini and 30-50 primary pulmonary lobules.
- Each secondary pulmonary lobule is supplied by a lobular bronchiole and a pulmonary artery branch.
- Drained by pulmonary veins which form in the periphery of the lobule and pass through the interlobular septa.
- Intralobular septa Within the secondary lobule, separating adjacent acini is a much less pronounced network of supporting connective tissue.

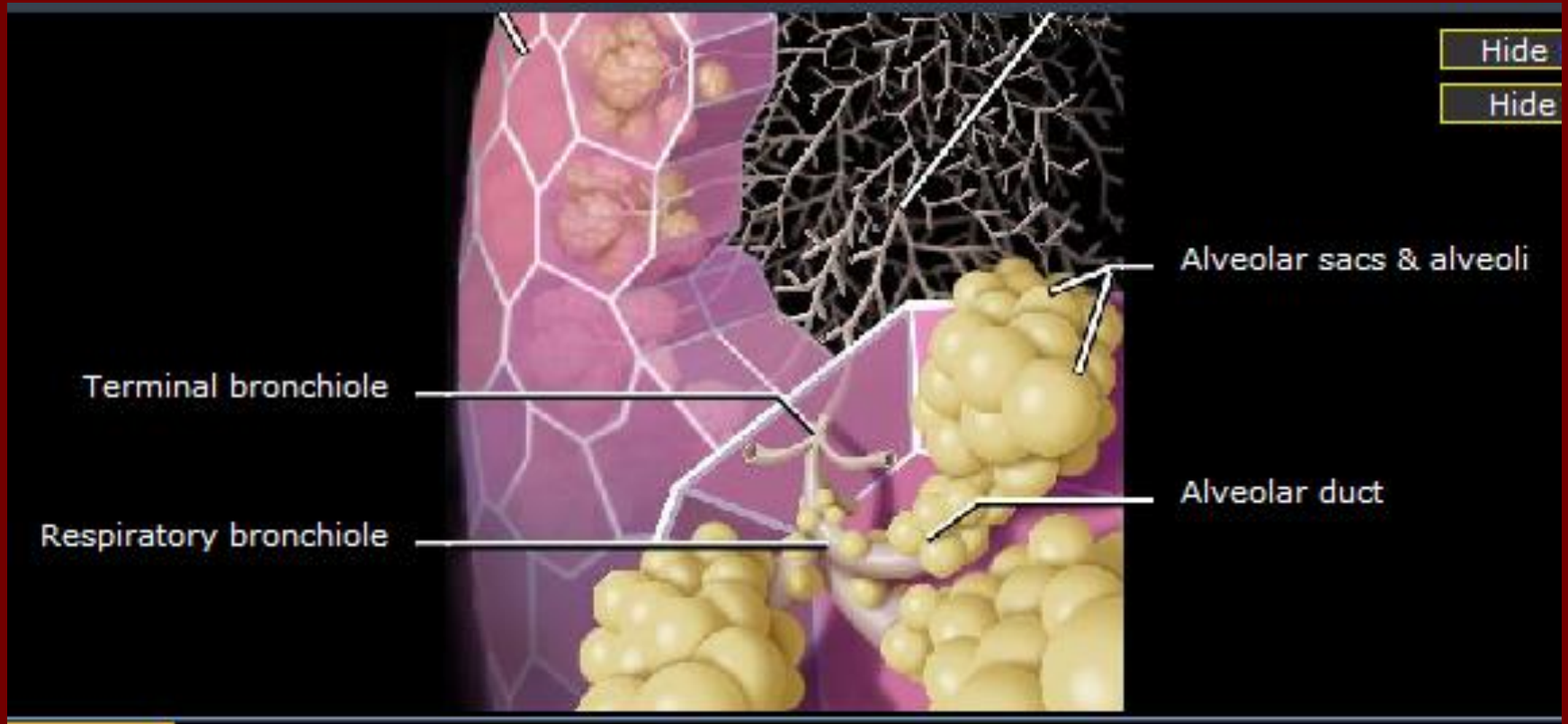
secondary pulmonary lobule







Airway Structure



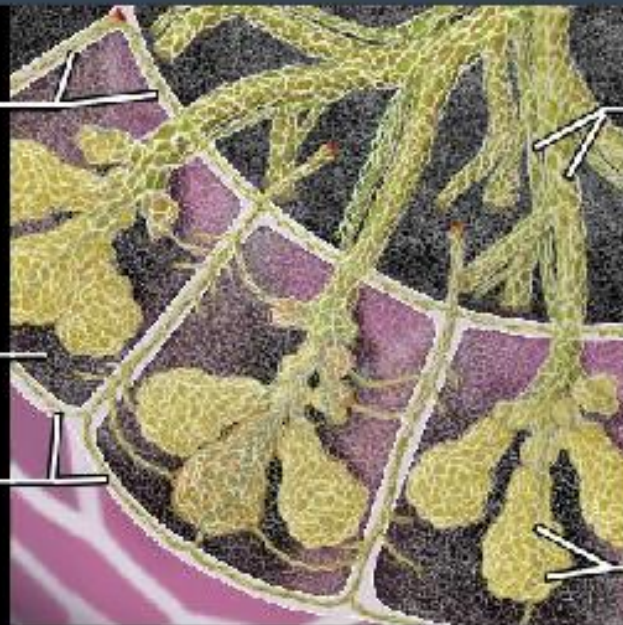
Hide Labels

Hide Lines

Peripheral interstitium along
interlobular septae

Parenchymal (intralobular)
interstitium

Peripheral (subpleural) interstitium



Axial (bronchoarterial) interstitium

Parenchymal (alveolar septal)
interstitium

Secondary Lobule

