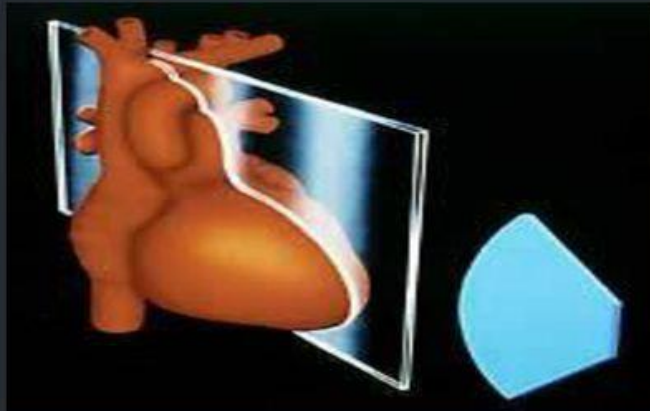


Apical 2-Chamber View (AP2CH)



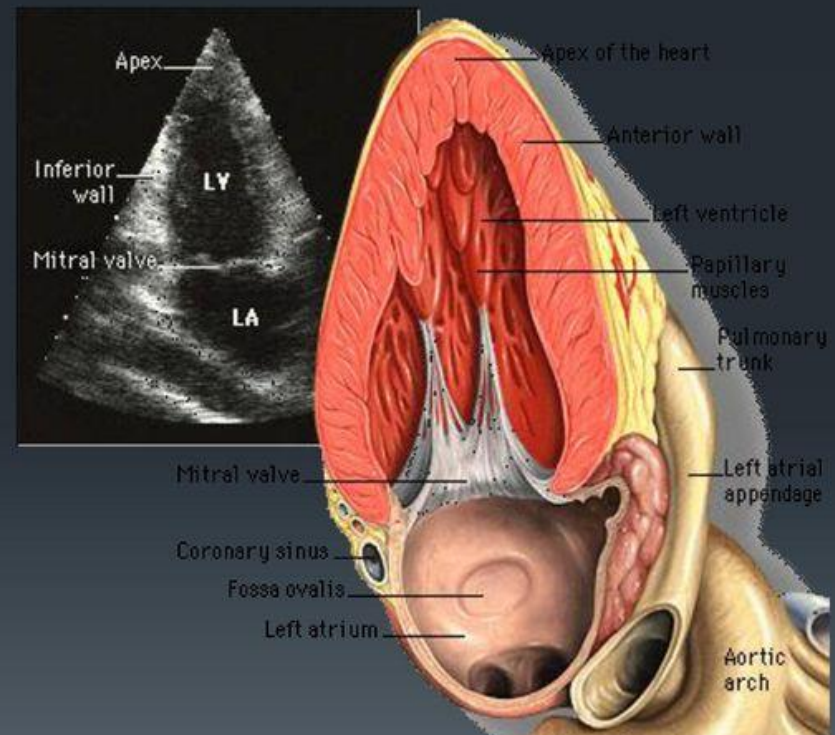
Transducer position: apex of the heart

Marker dot direction: points towards left side of neck (45° anticlockwise from AP4CH view)

Good for assessment of

LV anterior wall

LV inferior wall



2-chamber view



- Achieved by rotating the images perpendicularly to the mitral valve and parallel to the cardiac septum.
- This axis gives an overview of the left atrium ventricle and mitral valve.
- **Good view for analyzing ventricular function, especially that of the inferior and anterior walls.**
- For attaining functional data, consecutive short axes must be reconstructed making use of the 3- and 4-chamber views.