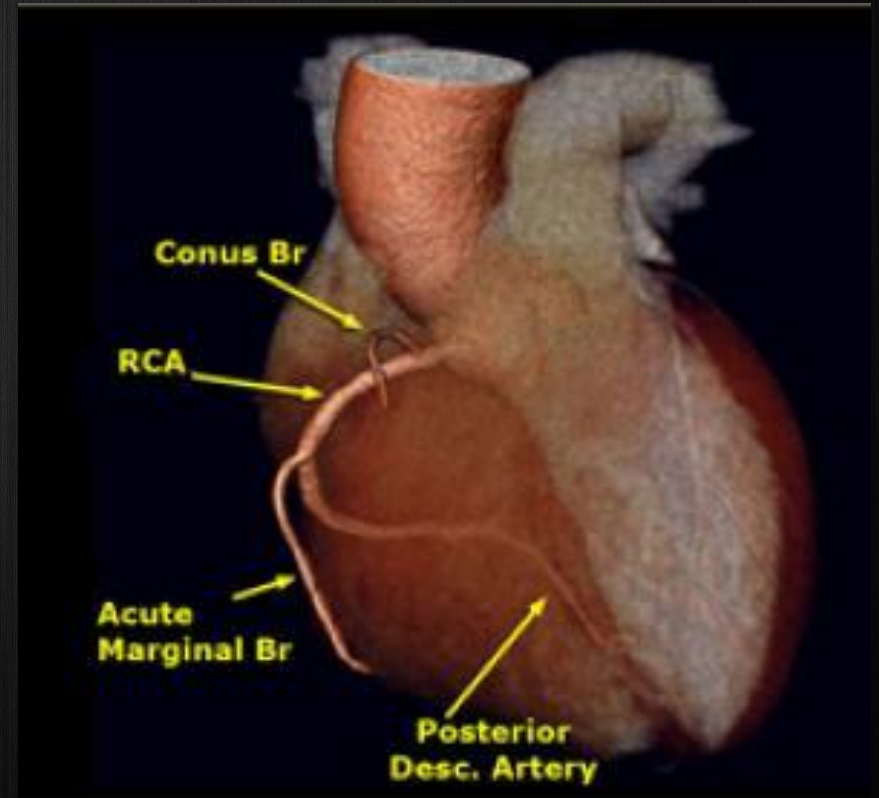
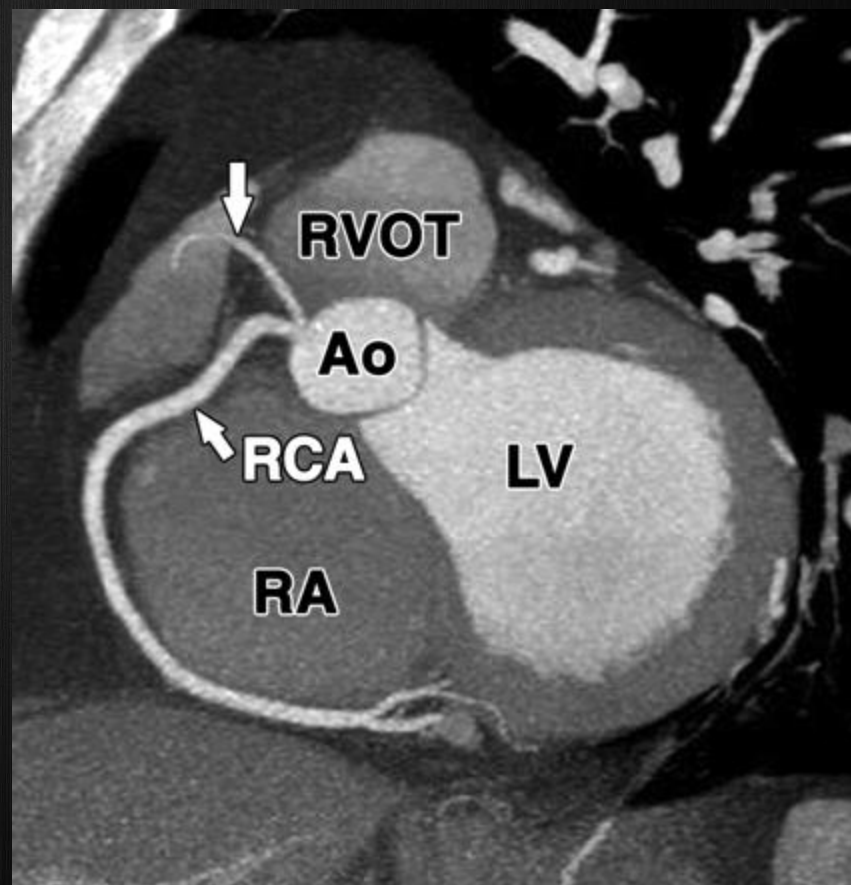
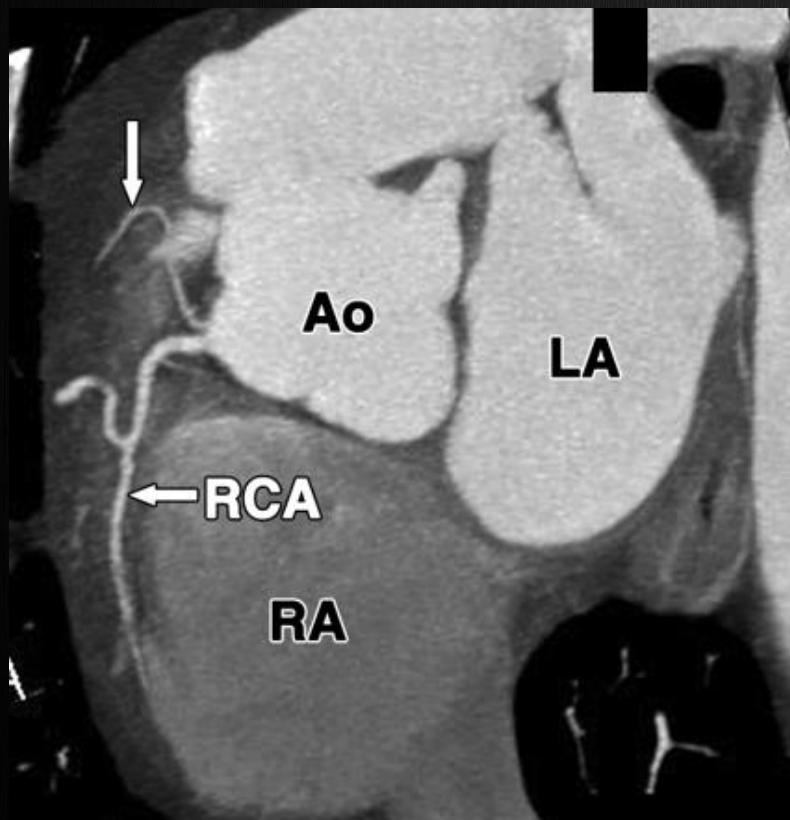


# Conus artery

- Small early branch of the (**RCA**) with collateral supply to the left circulation.
- Despite its small size, occlusion of the **conus branch** is associated with significant ST elevation infarctions.
- Variable distribution, but usually supplies a region of the anterior interventricular septum and the conus of the main pulmonary artery



# Conus Branch



# Conus Branch of RCA

