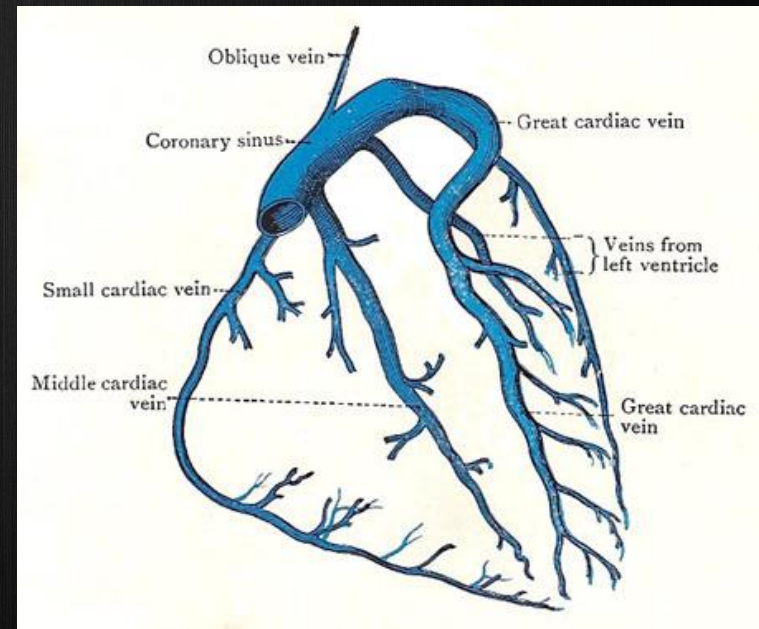
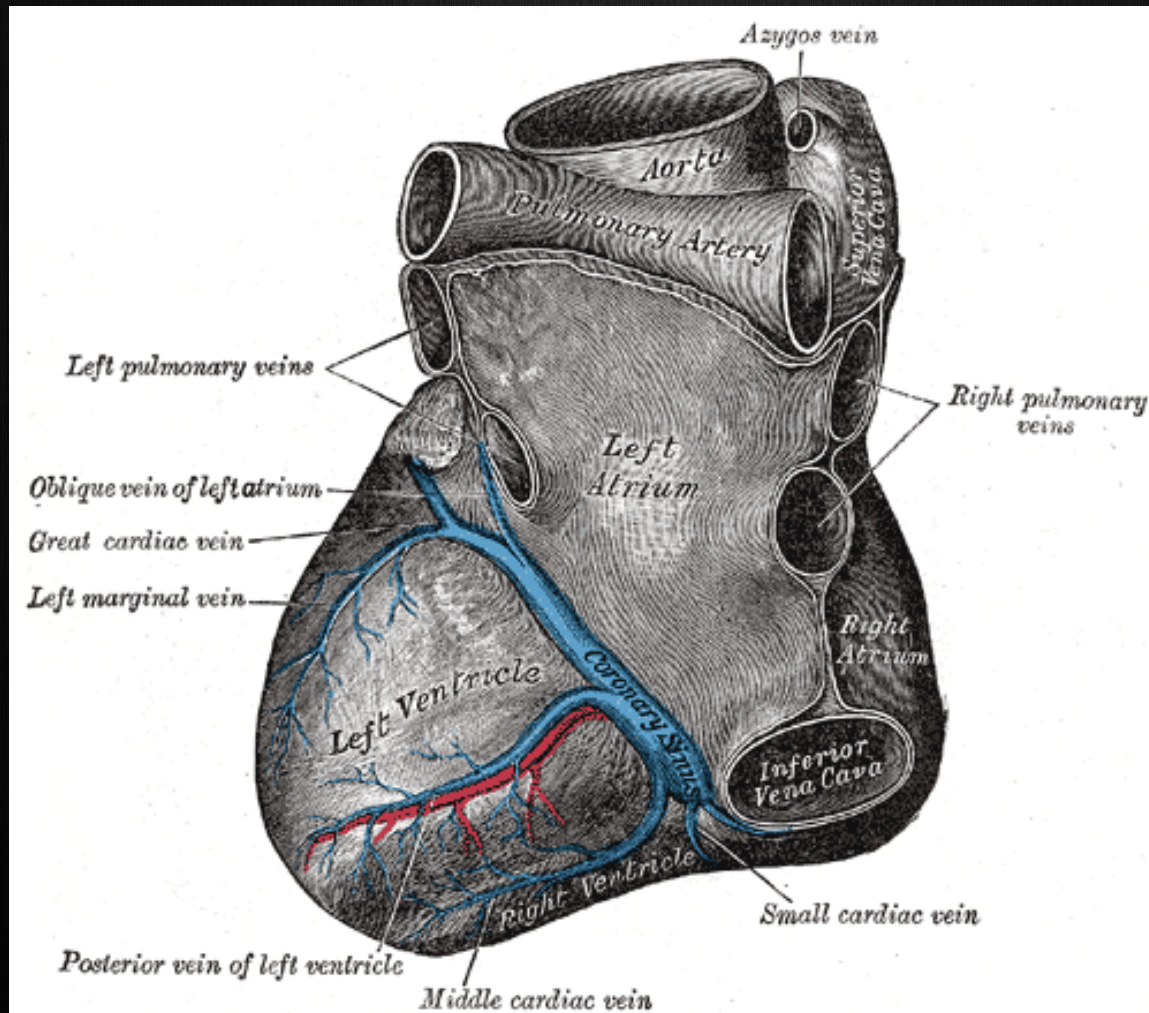


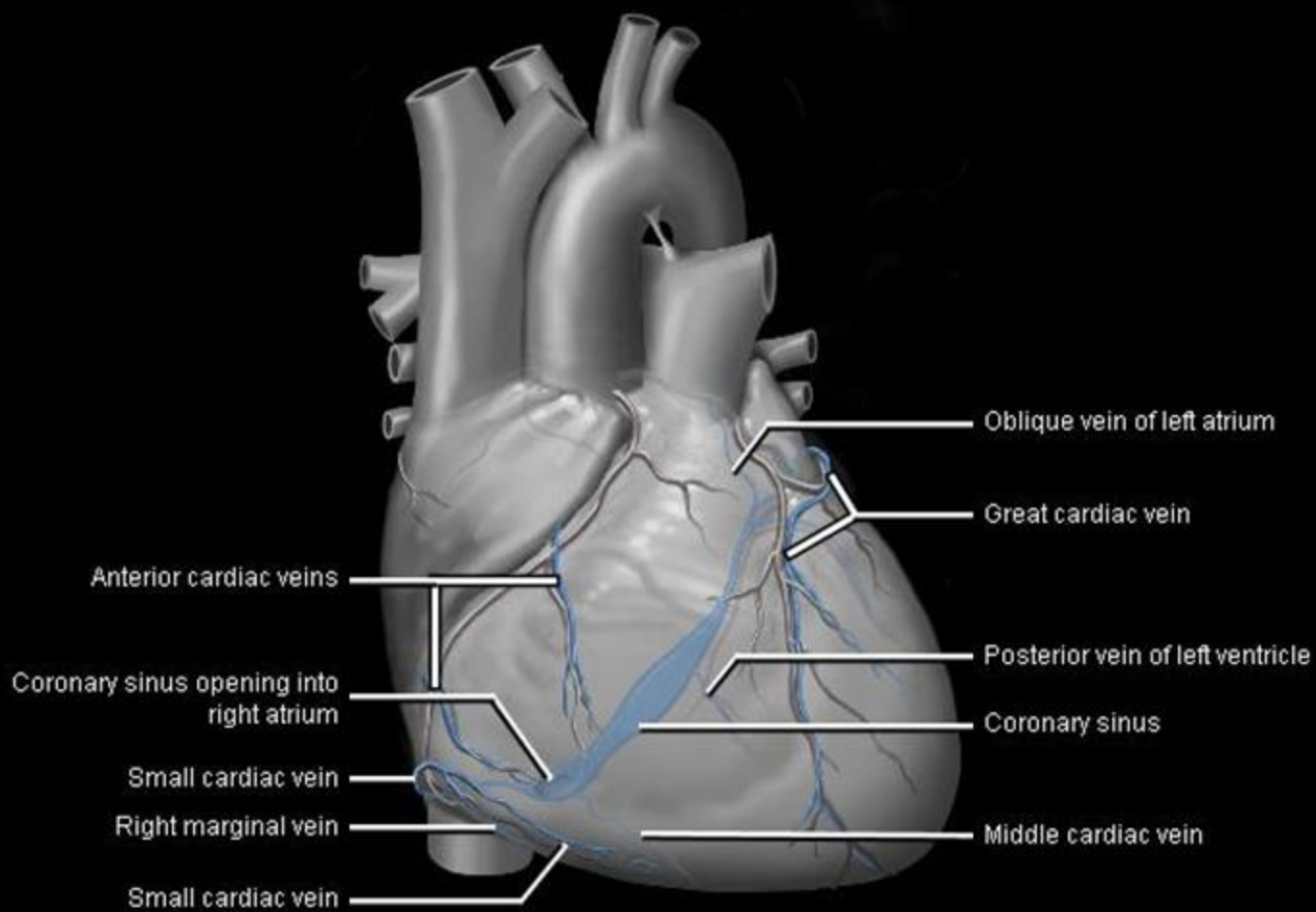
# Coronary Sinus

- Courses along the **posterior** wall of the left atrium into the left atrioventricular groove.
- It normally drains into the right atrium.
- The ostium of the **coronary sinus** is partially covered by the thebesian valve.
- Most veins of the heart drain into the coronary sinus
- Wide venous channel in posterior part of coronary sulcus; ends in right atrium
- **Great cardiac vein (left coronary vein)** accompanies LAD



# Posterior View





# Coronary sinus

