

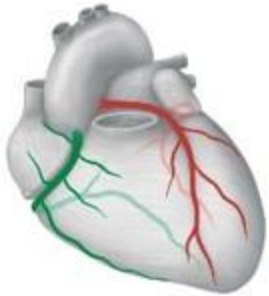
Coronary artery dominance

- Determined by artery supplying PDA and PLA
 - Right dominant: RCA supplies both arteries (~85%)
 - Left dominant: LCX supplies both arteries (~7.5%)
 - Co-dominant: RCA supplies PDA and LCX supplies PLA (~ 7.5%)



Which would you prefer? Why?

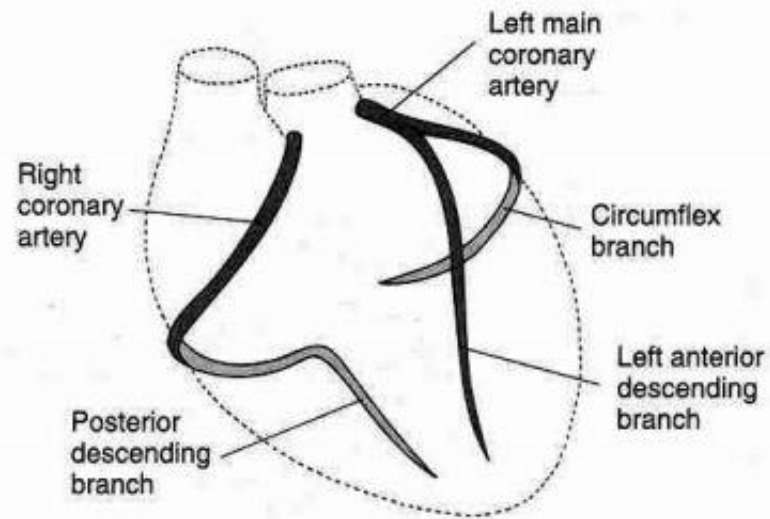
Left dominant: 15-17%



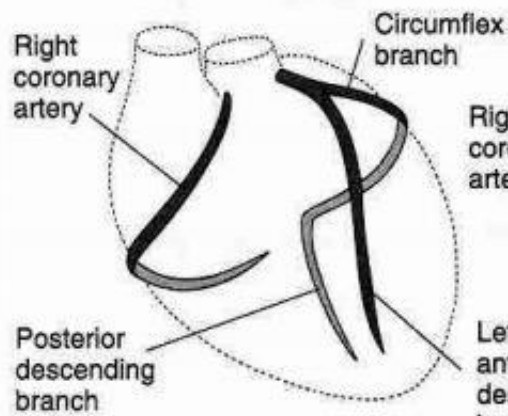
Balanced; right dominant: 67-70%



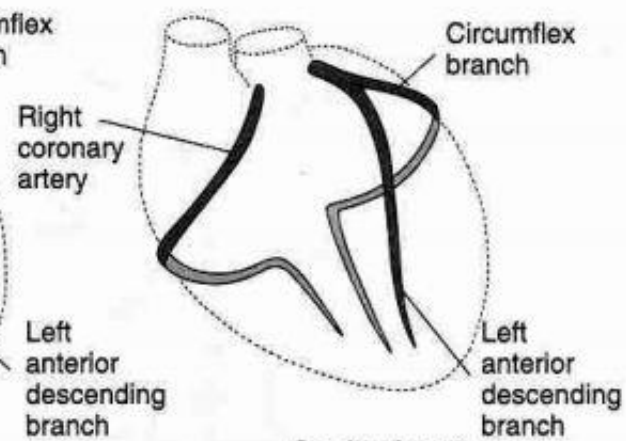
Right dominant: 15%



Right dominant

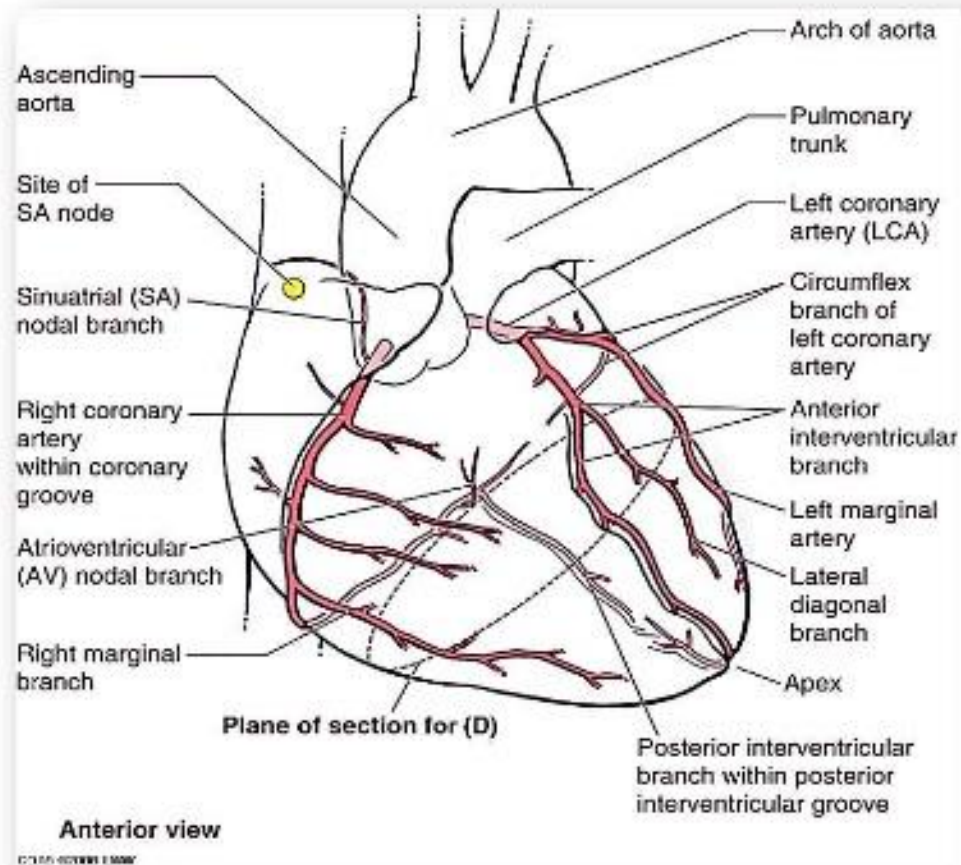


Left dominant



Co-dominant

BRANCHES OF THE RCA



- Atrioventricular Nodal Branch

