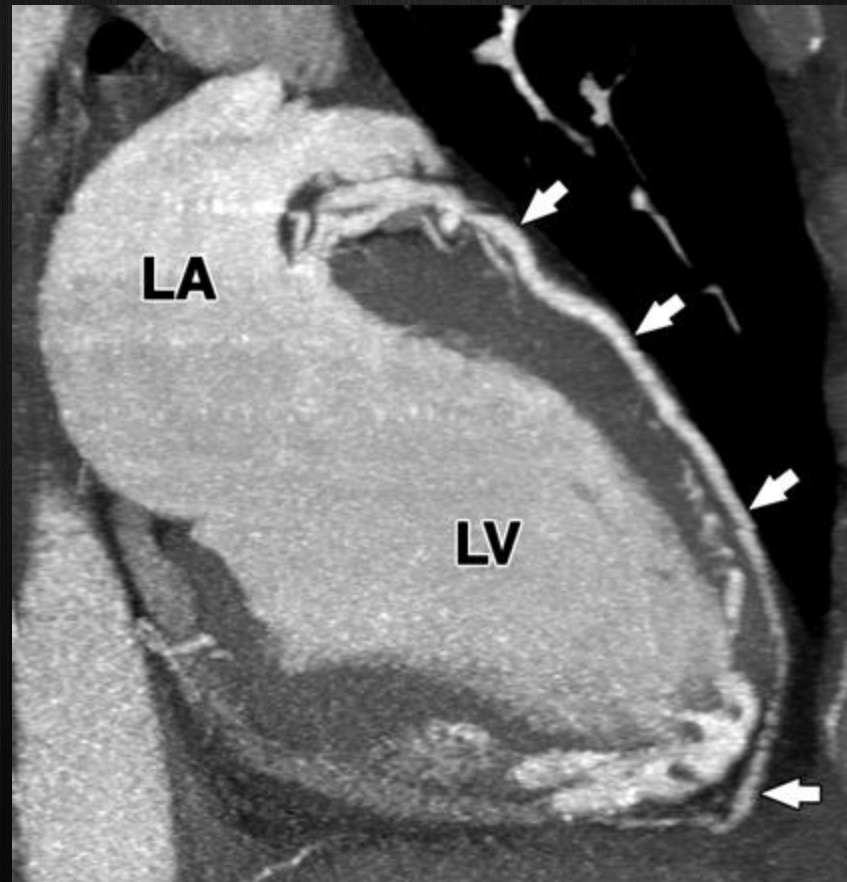


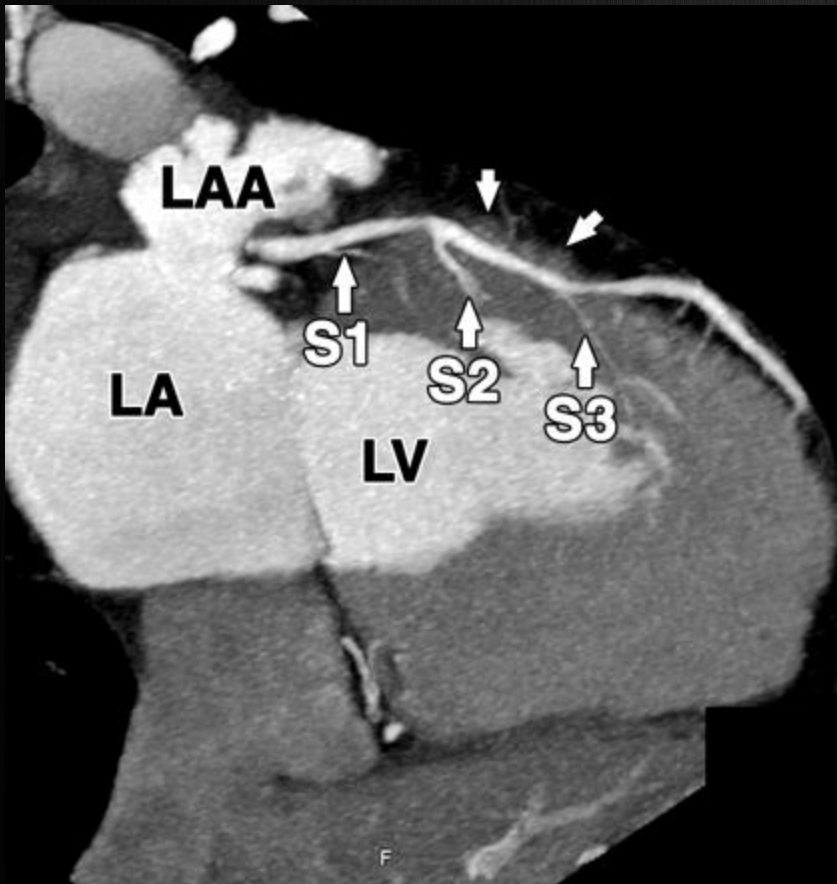
# LAD

- Runs in anterior interventricular groove (sulcus) and terminates near cardiac apex
  - **Diagonal branches** to anterior free wall of left ventricle (numbered as they arise from LAD)
  - **Septal branches** to anterior interventricular septum (numbered as they arise from LAD)

# LAD

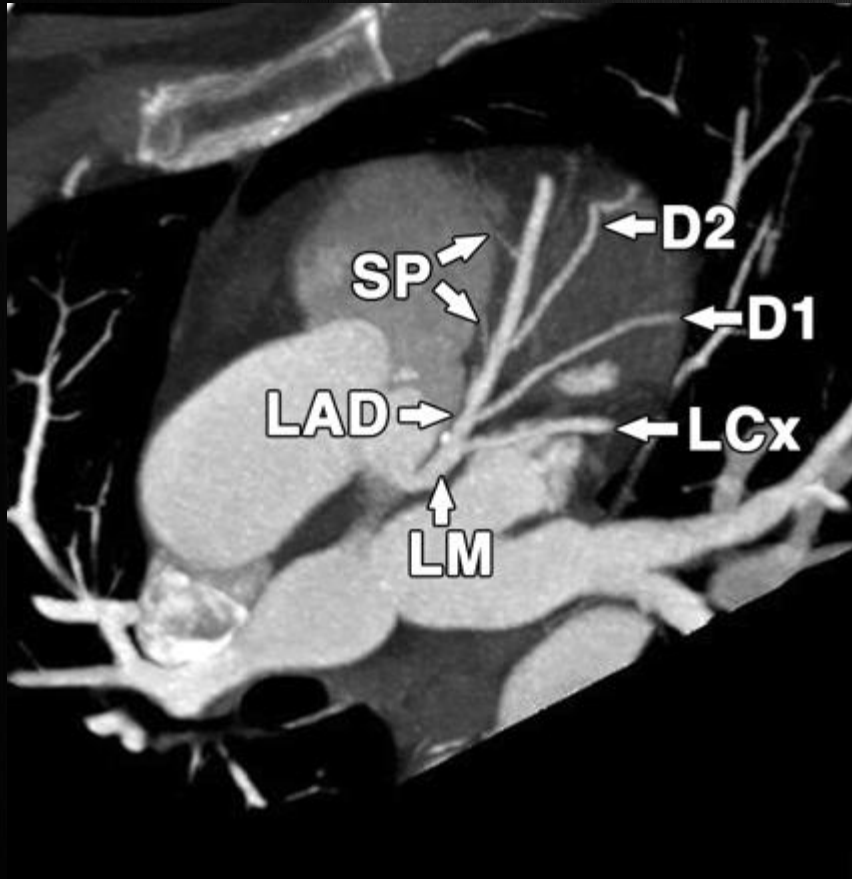


# Left anterior descending artery and septal perforator branches



- S1, S2, S3 = first, second, and third septalMyocardial bridge overlies left anterior descending artery just beyond second septal perforator (*arrows*).
- perforators.

# Septal Branches



- D1 = first diagonal
- D2 = second diagonal,
- SP = septal perforator branches.
- (MIP) image reveals two diagonal branches (D1 and D2) from left anterior descending artery.
- Diagonal branches course laterally, and small septal perforator branches course medially.