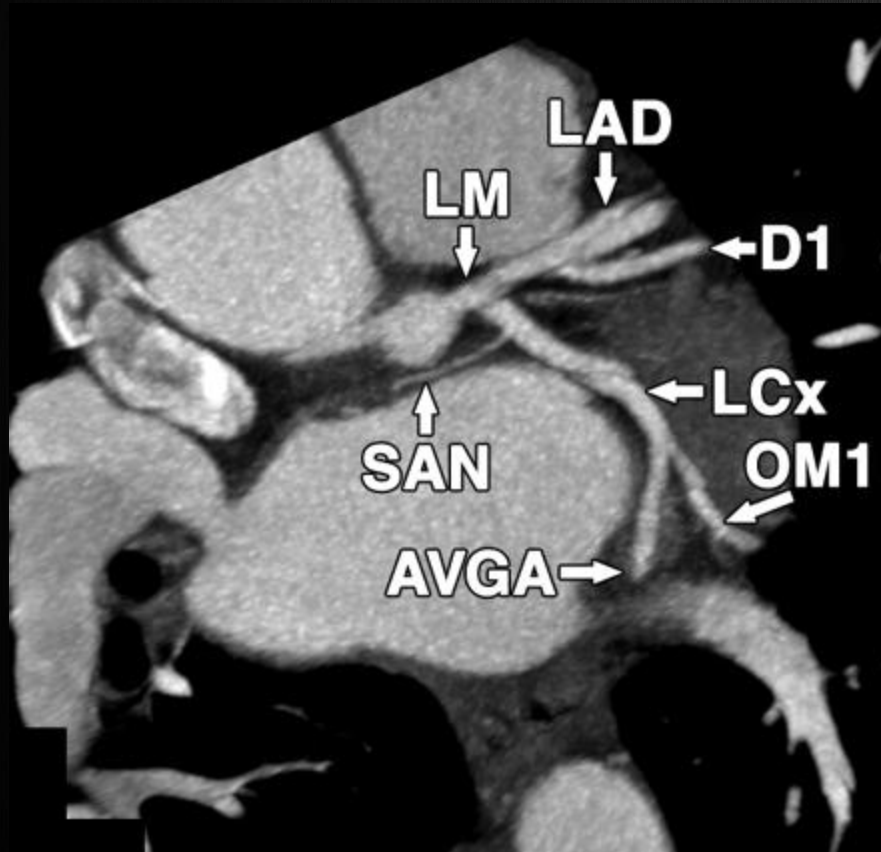


# Left main coronary artery

- Passes leftward, posterior to pulmonary trunk and bifurcates into LAD and LCX
- Occasionally, trifurcates into LAD, LCX and **ramus intermedius**
  - **Ramus intermedius:** Course similar to 1st diagonal branch of LAD to anterior left ventricle
- May be absent: LAD and LCX arise separately from left coronary sinus

# Left Main



- AVGA = atrioventricular groove artery
- D1 = first diagonal
- LAD = left anterior descending
- LCx = left circumflex artery,
- LM = left main coronary artery,
- OM1 = first obtuse marginal,
- SAN = sinoatrial node branch