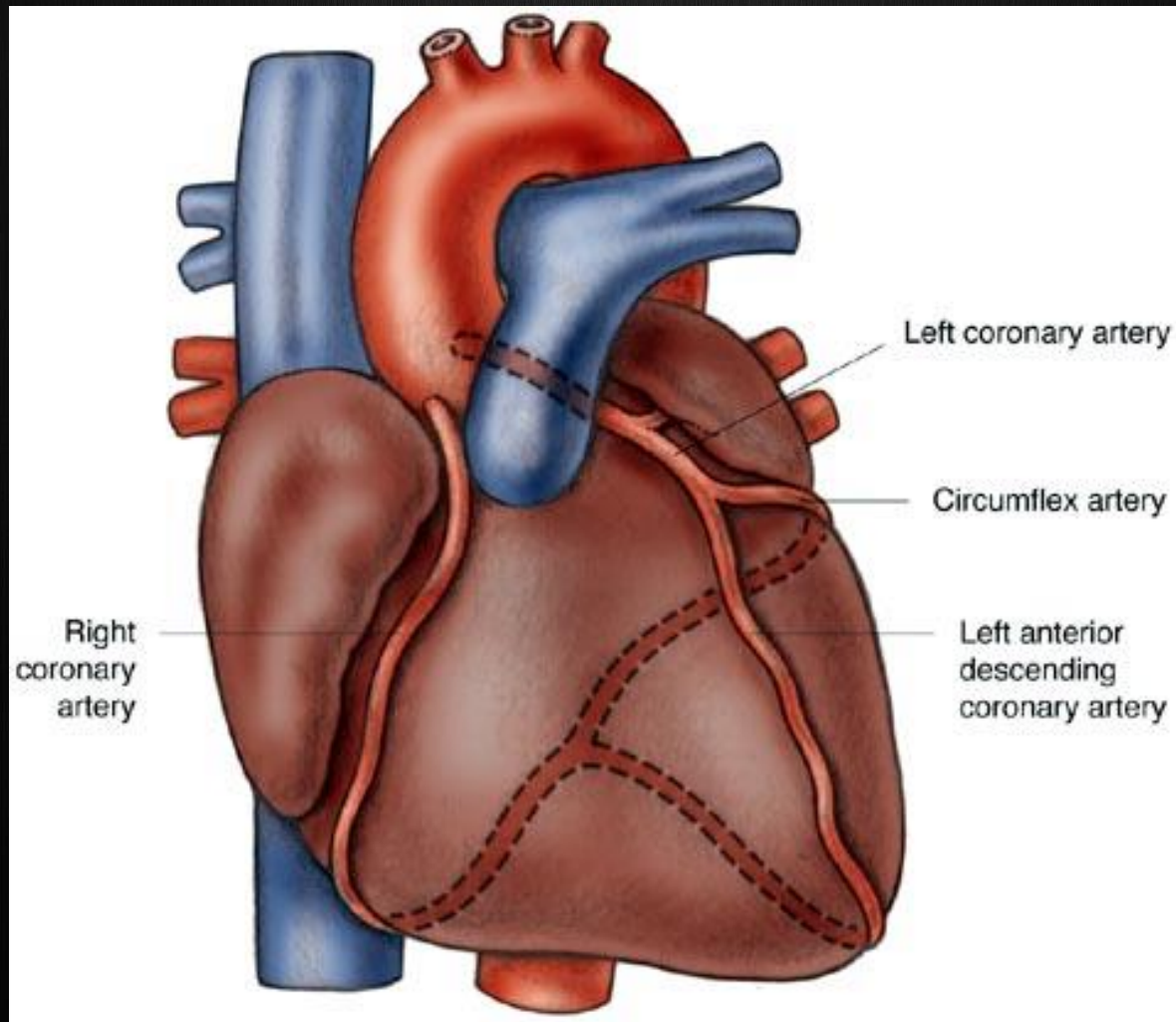
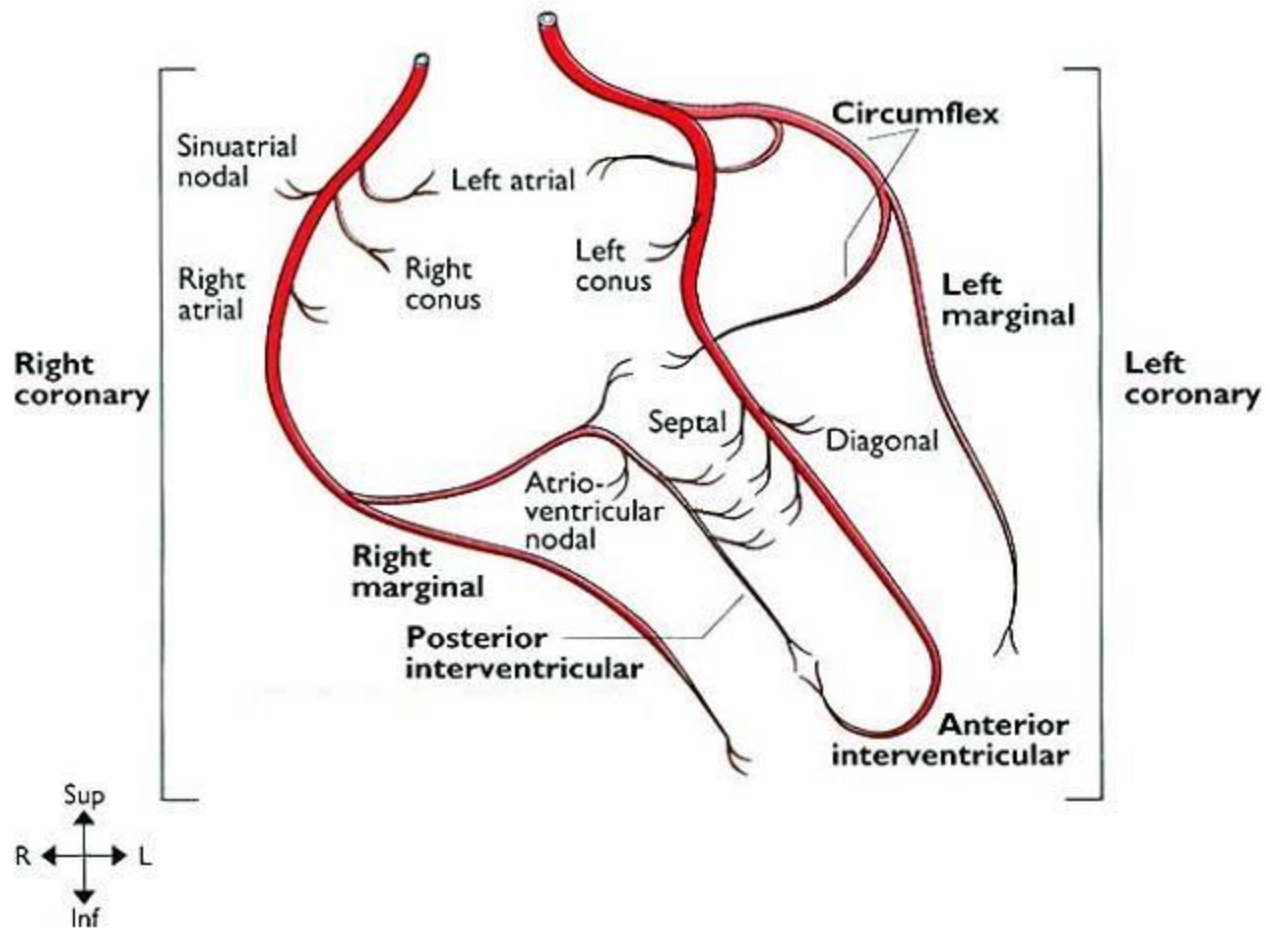


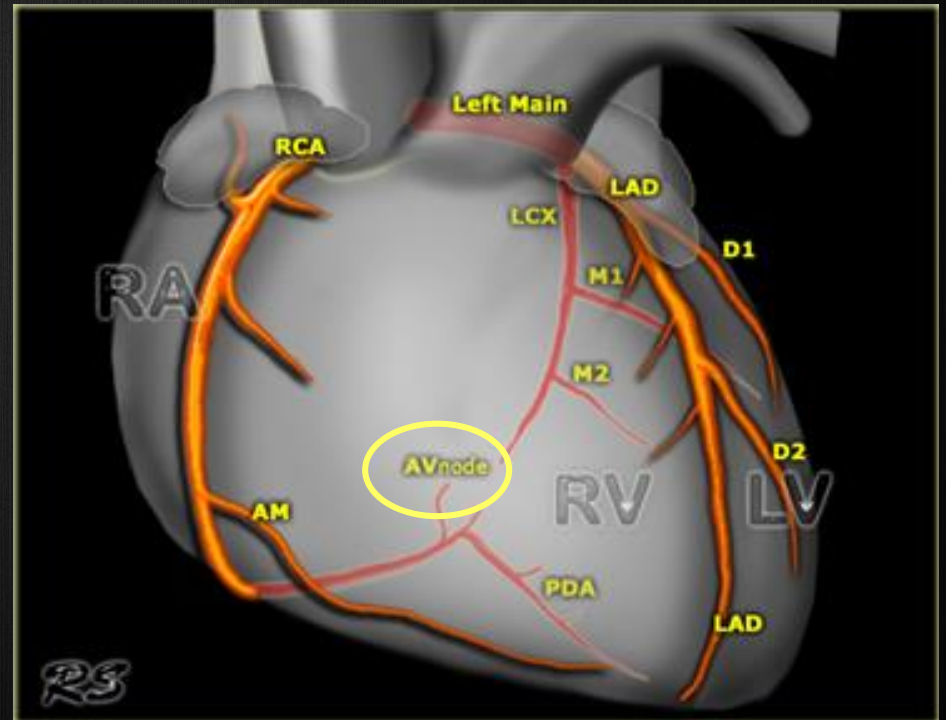
Coronary arteries



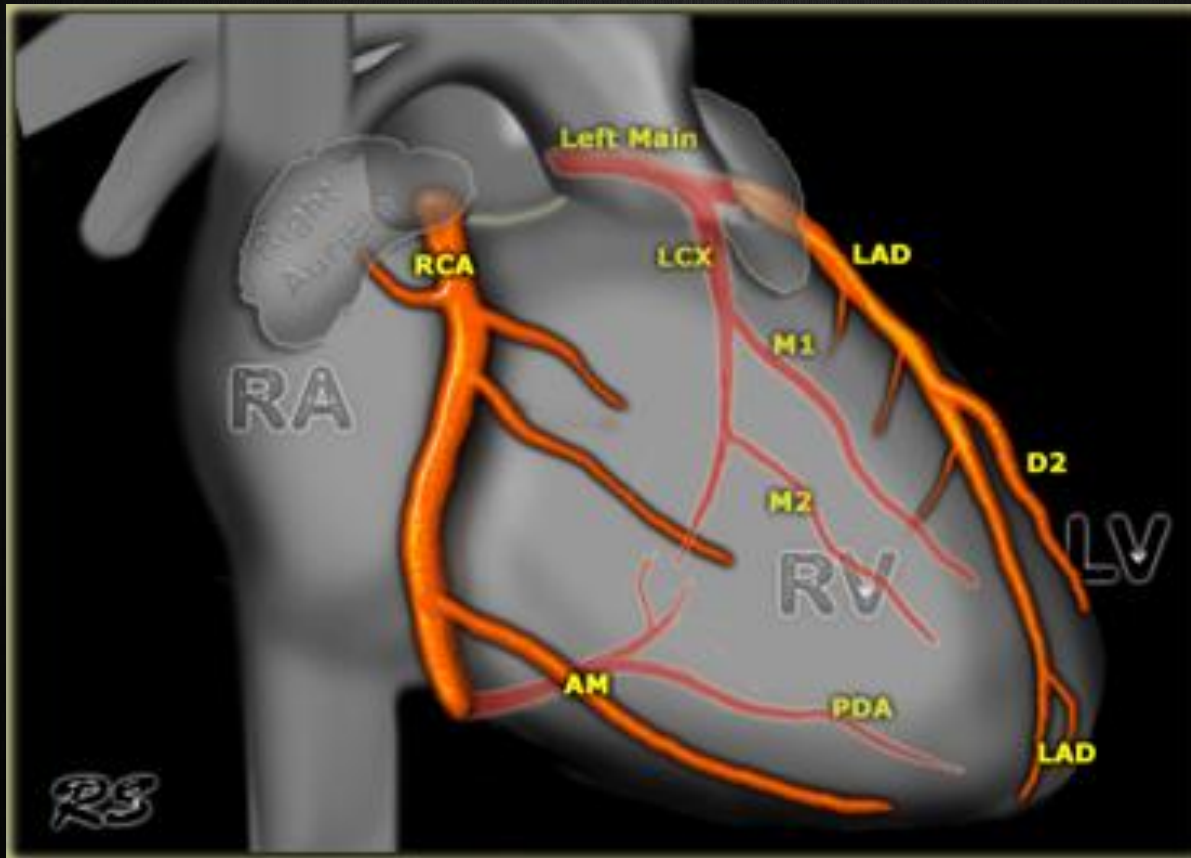


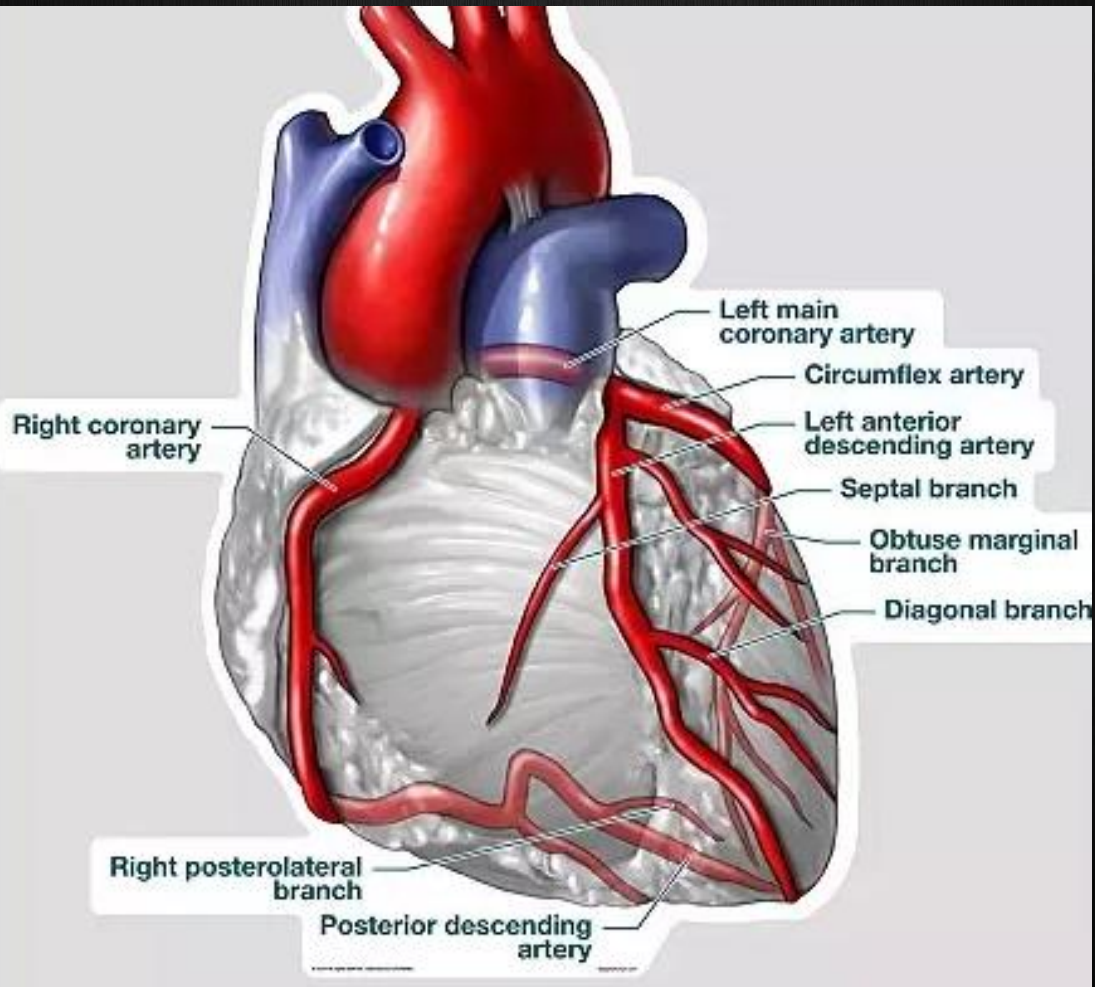
Coronary arteries in the anterior projection

- Left Main or left coronary artery (LCA)
 - Left anterior descending (LAD)
 - » diagonal branches (D1, D2)
 - » septal branches
 - Circumflex (Cx)
 - » Marginal branches (M1,M2)
- Right coronary artery
 - Acute marginal branch (AM)
 - AV node branch
 - Posterior descending artery (PDA)



Right anterior oblique projection





Coronary Arteries

- Right and left coronary arteries, each arises from corresponding aortic coronary sinus (of Valsalva)
- Coronary artery branches generally considered end arteries
 - Myocardial segments predominately supplied by segmental coronary artery branches
 - Potential to develop collateral circulation

Coronary Cusps



- Named according to their relationship with the coronary arteries,
- Right coronary
- Left coronary
- non-coronary cusp
- (R, L and N)