

Right coronary artery

Runs in the coronary sulcus

Sinu-atrial (SA) nodal a.

Supplies SA node ●

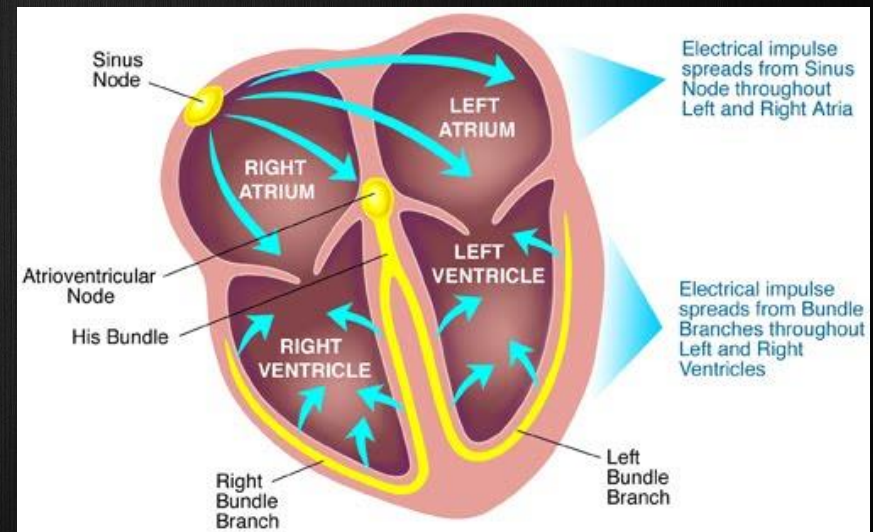
Right marginal a.

Supplies right ventricle

Does not reach apex

Sinoatrial node

- Small body of specialized muscle tissue in the wall of the right atrium of the heart that acts as a pacemaker by producing a contractile signal at regular intervals.



Sinoatrial node artery

- Second branch off the RCA is often the sinoatrial (SA) nodal artery.
- 55% of cases, the SA nodal artery arises from the RCA
- 45%, it arises from the circumflex



SA nodal artery

- SA nodal artery heads posteriorly toward the sinoatrial node.
- Sinoatrial node is located in the superior aspect of crista terminalis of the right atrium (near where the superior vena cava joins the right atrium).
- The crista terminalis is a vestigial remnant located between the right atrial appendage and the sinus venosus.
- The crista terminalis can be seen as a right atrial "pseudomass" on CT, MRI, or echocardiography

Conus and sinoatrial node arteries

- Conus artery (arrow) heading anteriorly a
- Sinoatrial node artery (arrowhead) heading posteriorly.

