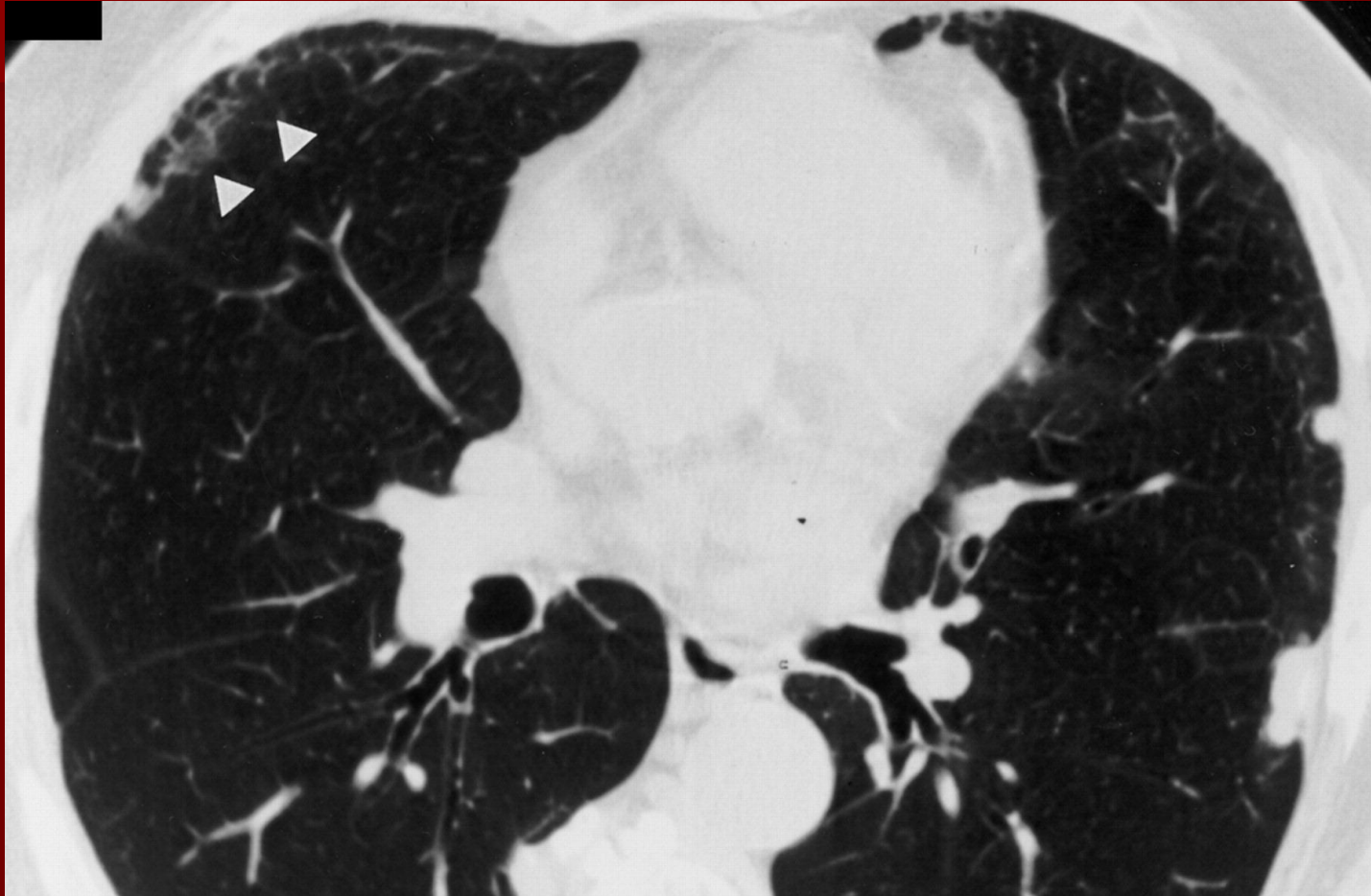


Intralobular Septal Thickening

TABLE 3-4. *Differential diagnosis of intralobular interstitial thickening*

Diagnosis	Comments
Idiopathic pulmonary fibrosis (IPF) or other cause of Usual interstitial pneumonia (UIP)	Common; associated with honeycombing
Asbestosis	Common
Hypersensitivity pneumonitis (chronic)	Common
Alveolar proteinosis	Common; associated with septal thickening and ground-glass opacity
Lymphangitic carcinomatosis	Uncommon; septal thickening predominates
Pulmonary edema	Uncommon; septal thickening predominates
Sarcoidosis	Uncommon
Silicosis/Coal worker's pneumoconiosis	Uncommon

Intralobular septa (Asbestosis)



Thickened inter-and intralobular septa of asbestosis (*arrowheads*)