

Small airway disease

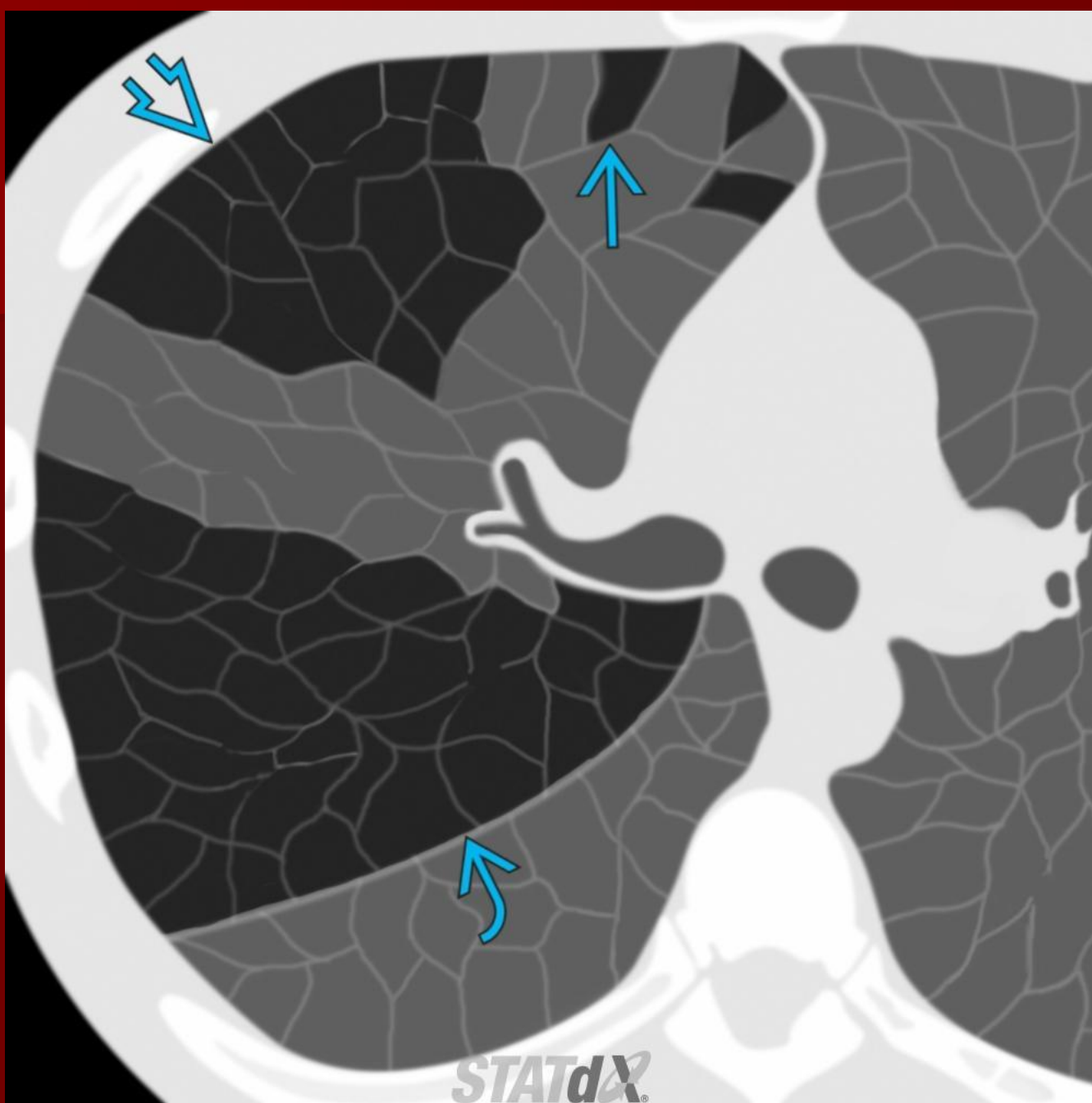
- Infectious as well as non conditions that affect the small airways
- Some authors consider this term synonymous with a bronchiolitis ⁴, conditions such as asthma may also fall under this group ⁷. T
- Many conditions can affect the small airways.

HSBC

- **H:** hypersensitivity pneumonitis
- **S:** sarcoidosis
- **B:** bronchiolitis obliterans
- **C:** cystic fibrosis/bronchiectasis

Small airways disease

- Hypersensitivity pneumonitis
- Sarcoidosis
- Respiratory bronchiolitis interstitial lung disease.
- Follicular bronchiolitis
- Sjogren syndrome



Drawing shows several patterns of air-trapping: Lobular (cyan solid arrow), subsegmental (cyan open arrow), and segmental (cyan curved arrow).

CT Findings

- Direct signs
 - thickened peripheral airways - may only be seen in the proximal portion
- Indirect signs - many of these features may be non specific on their own
 - air trapping
 - subsegmental atelectasis
 - mosaic lung attenuation
 - centrilobular nodules
 - tree-in-bud change