

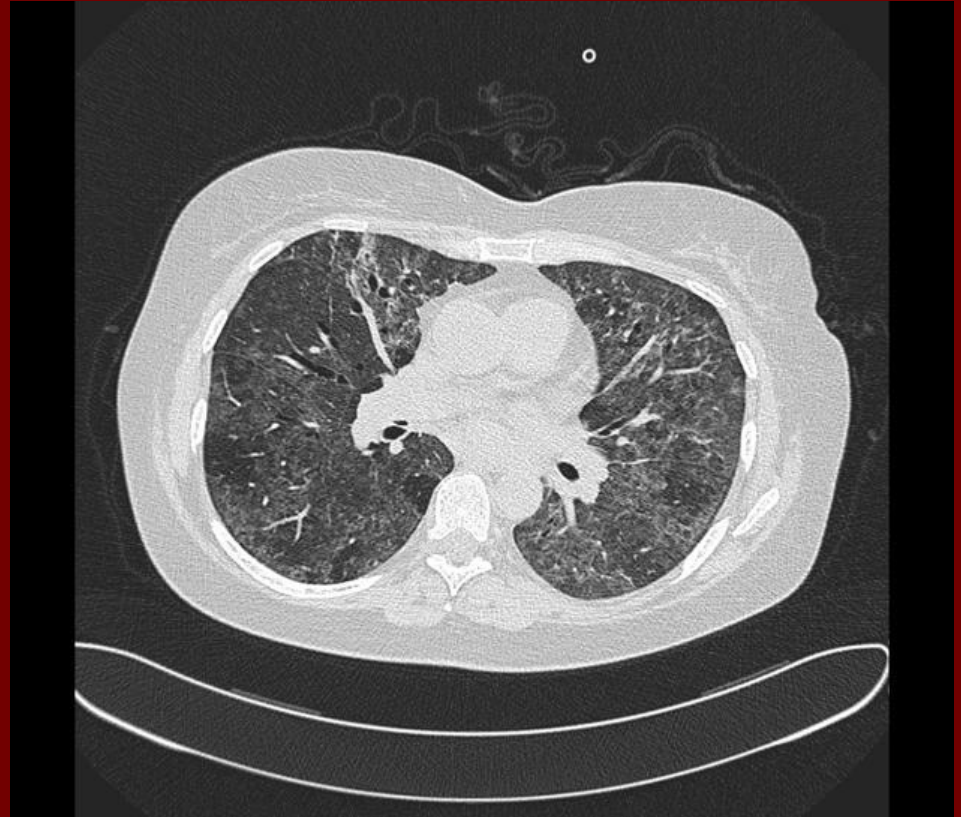
Hypersensitivity pneumonitis

- Also known as **Extrinsic Allergic Alveolitis**
- Inflammatory reaction to inhalation of an allergen.
 - organic or inorganic particles (microbes, animal or plant proteins, and certain chemicals)

CT

- Homogeneous ground-glass opacity: bilateral and symmetric but sometimes patchy and concentrated in the middle part and base of the lungs.
 - Usually represents chronic interstitial inflammation but occasionally may be caused by fine fibrosis or organising pneumonia
- Numerous round centrilobular opacities: usually <5 mm in diameter
- (hypoattenuation and hypovascularity of scattered secondary lobules: hypoattenuating regions that persist on expiratory CT scans are indicative of air trapping, which is caused by bronchiolar inflammation and obstruction: this may give a mosaic attenuation pattern ⁴
- Head cheese sign: the combination of patchy ground-glass opacities, normal regions, and air trapping

Head And Cheese



Hypersensitivity pneumonitis





Chronic

