

**Table 4.** High-Resolution Computed Tomography Scanning Patterns

UIP	Probable UIP	Indeterminate for UIP	Alternative Diagnosis
Subpleural and basal predominant; distribution is often heterogeneous*	Subpleural and basal predominant; distribution is often heterogeneous	Subpleural and basal predominant	Findings suggestive of another diagnosis, including: <ul style="list-style-type: none"> <li>• CT features: <ul style="list-style-type: none"> <li>◦ Cysts</li> <li>◦ Marked mosaic attenuation</li> <li>◦ Predominant GGO</li> <li>◦ Profuse micronodules</li> <li>◦ Centrilobular nodules</li> <li>◦ Nodules</li> <li>◦ Consolidation</li> </ul> </li> <li>• Predominant distribution: <ul style="list-style-type: none"> <li>◦ Peribronchovascular</li> <li>◦ Perilymphatic</li> <li>◦ Upper or mid-lung</li> </ul> </li> <li>• Other: <ul style="list-style-type: none"> <li>◦ Pleural plaques (consider asbestosis)</li> <li>◦ Dilated esophagus (consider CTD)</li> <li>◦ Distal clavicular erosions (consider RA)</li> <li>◦ Extensive lymph node enlargement (consider other etiologies)</li> <li>◦ Pleural effusions, pleural thickening (consider CTD/drugs)</li> </ul> </li> </ul>
Honeycombing with or without peripheral traction bronchiectasis or bronchiolectasis†	Reticular pattern with peripheral traction bronchiectasis or bronchiolectasis May have mild GGO	Subtle reticulation; may have mild GGO or distortion ("early UIP pattern") CT features and/or distribution of lung fibrosis that do not suggest any specific etiology ("truly indeterminate for UIP")	

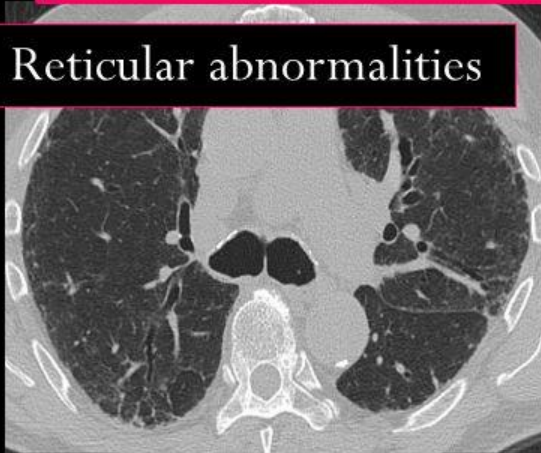
*Definition of abbreviations:* CT = computed tomography; CTD = connective tissue disease; GGO = ground-glass opacities; RA = rheumatoid arthritis; UIP = usual interstitial pneumonia.

\*Variants of distribution: occasionally diffuse, may be asymmetrical.

†Superimposed CT features: mild GGO, reticular pattern, pulmonary ossification.

*Accordingly to the 2011 ATS/ERS guidelines, UIP pattern is defined by four criteria:*

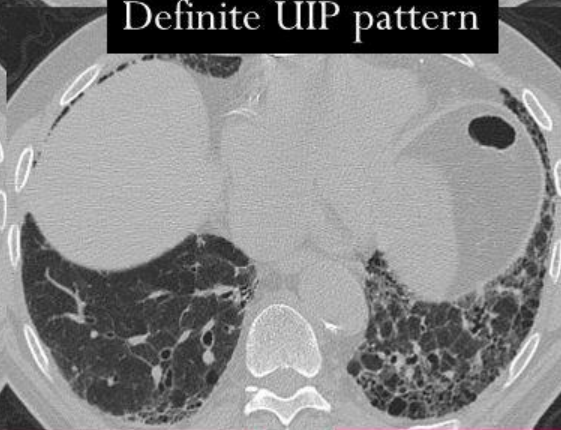
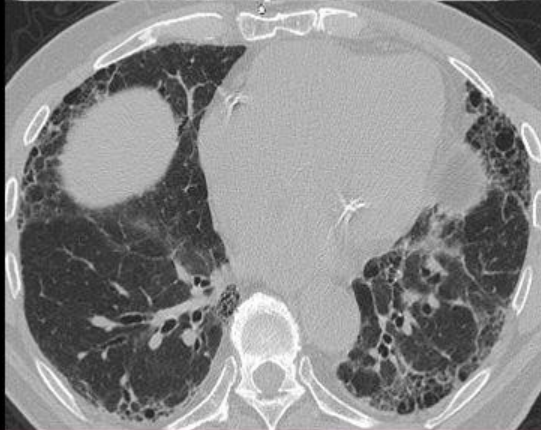
1. Reticular abnormalities



2. Subpleural and basal predominance



Definite UIP pattern



3. Honeycombing with traction bronchiectasis

4. Absence of features listed as «inconsistent with UIP»