

# Random Nodules

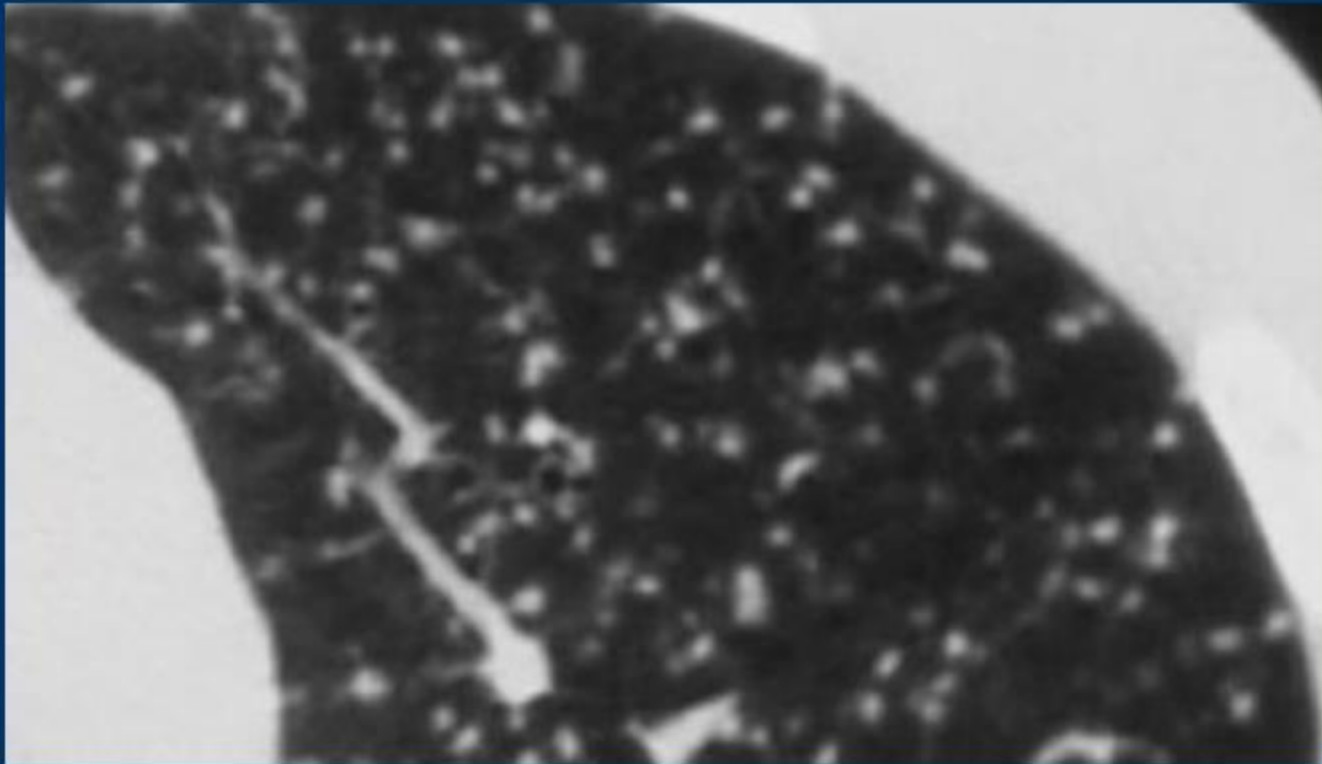
- Hematogenous metastases
- Miliary tuberculosis
- Miliary fungal infections
- Sarcoidosis may mimick this pattern, when very extensive
- Langerhans cell histiocytosis (early nodular stage)

# Random nodules

**TABLE 3-7.** *Differential diagnosis of small nodules—random distribution*

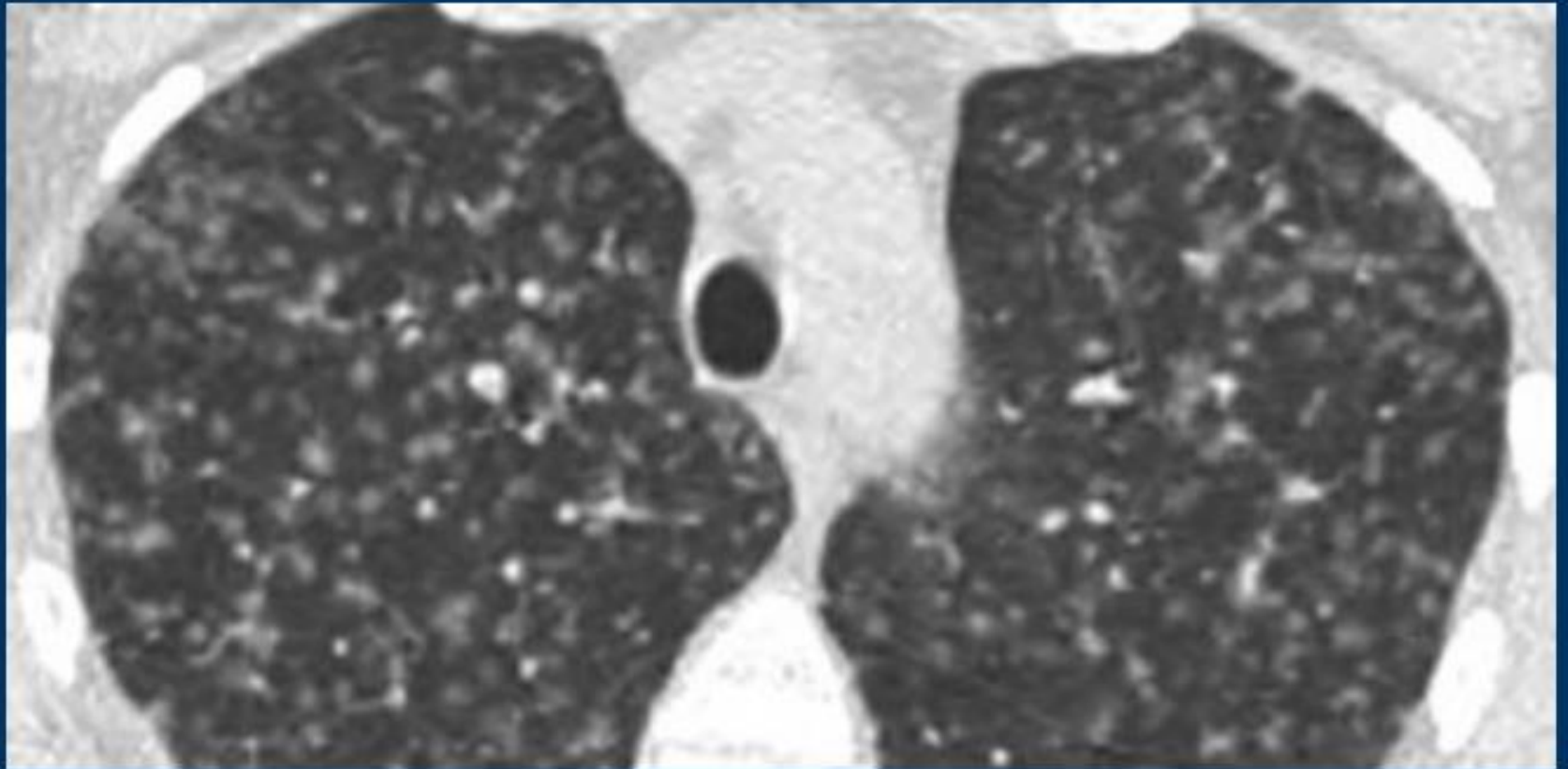
Diagnosis	Comments
Miliary TB, Fungus	Common; nodules may sometimes appear related to vessels
Hematogenous metastases	Common; nodules may sometimes appear related to vessels
Silicosis/Coal worker's pneumoconiosis	When numerous, may appear diffuse and random; centrilobular and subpleural nodules usually predominate; posterior predominance common
Histiocytosis X	When numerous, may appear diffuse and random; otherwise centrilobular

# Random Nodules



Random distribution of nodules in miliary tuberculosis

# Random

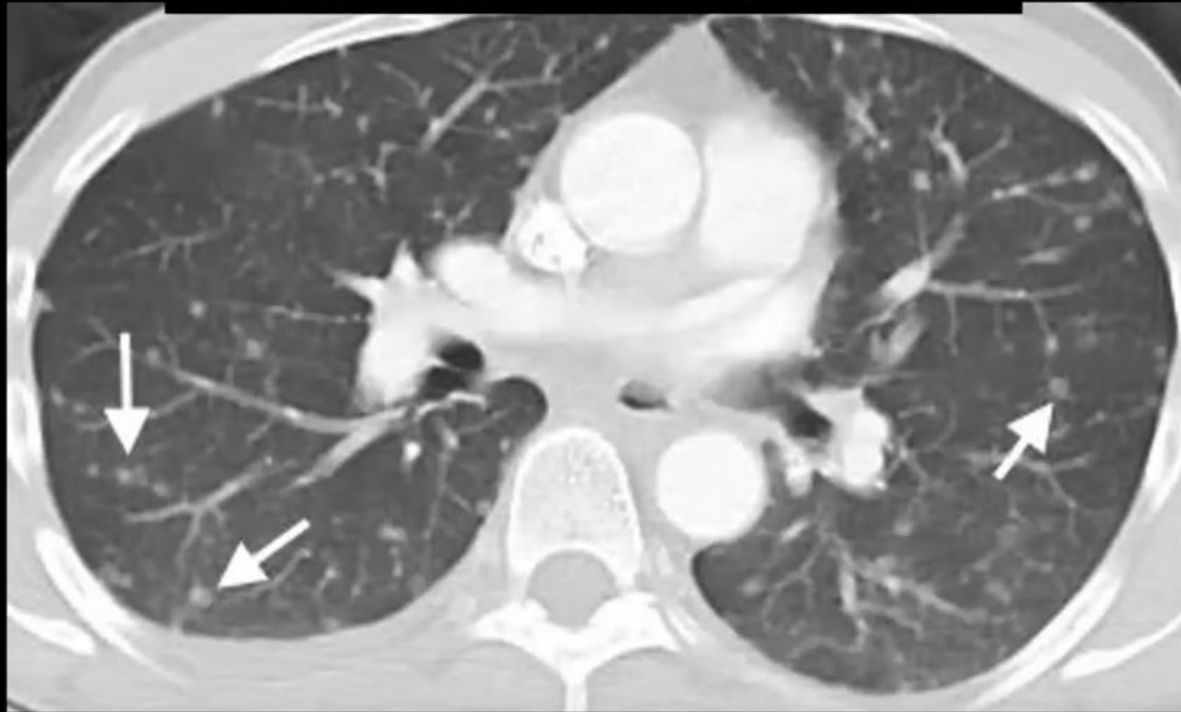


Langerhans cell histiocytosis: early nodular stage before the typical cysts appear.

# Random

- Mets – well circumscribed, different sizes

Colon cancer metastases



# Random

