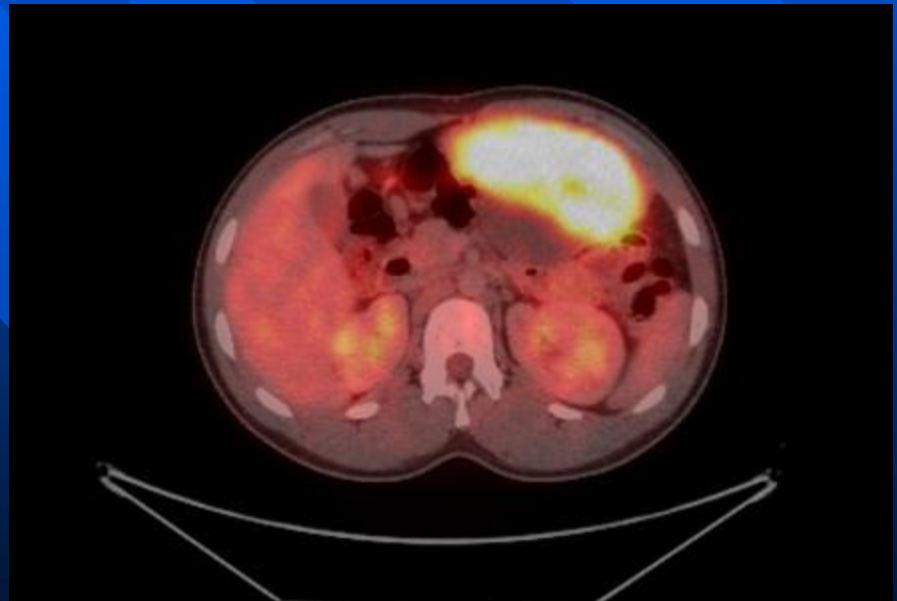
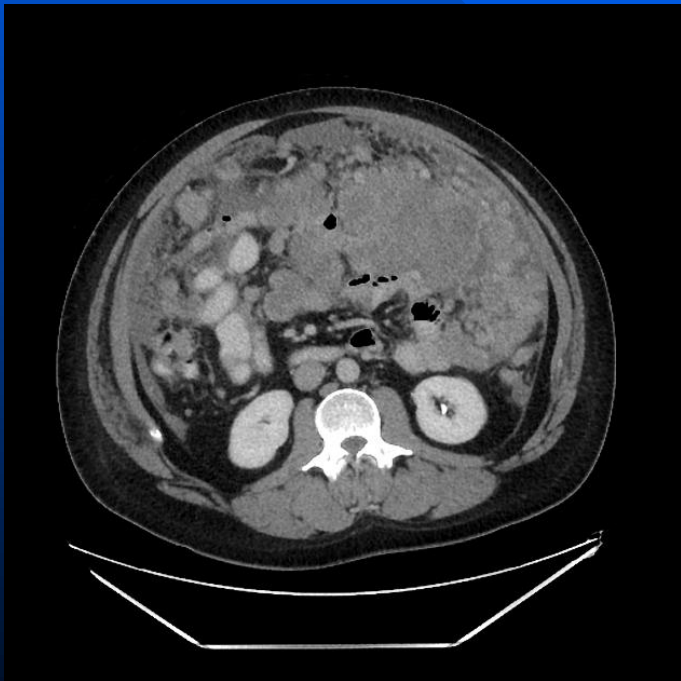
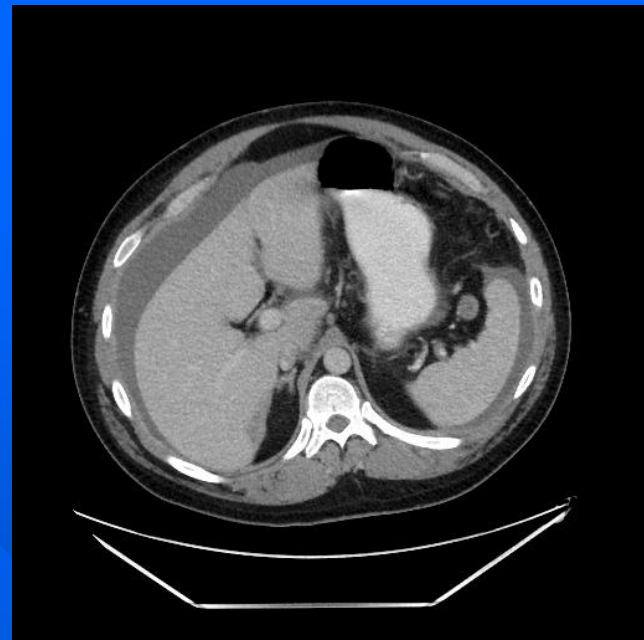
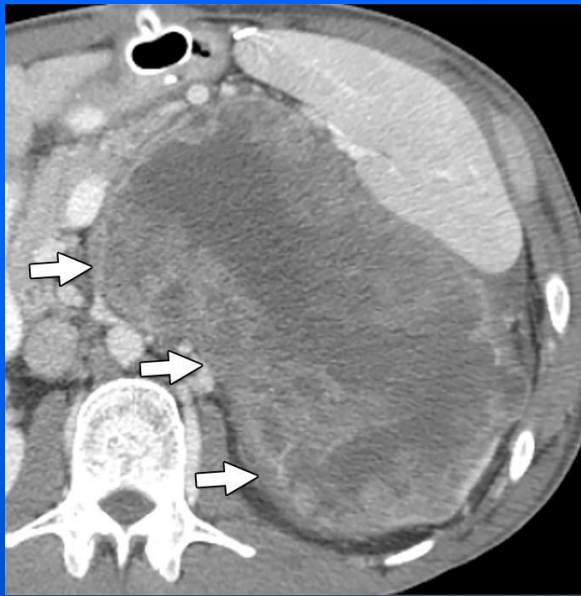


# Desmoplastic small round cell tumor (DSRCT)

- Rare, aggressive malignancy, primarily affecting adolescents and young adults, with a strong male predominance.
- Predominantly arises in the peritoneal cavity, most commonly the pelvic peritoneal cavity or retrovesical/rectouterine space, with no clear organ of origin.
- CT findings:
  - Exhibits multiple or solitary large soft-tissue masses, often measuring more than 5 cm.
  - These masses show heterogeneous enhancement following contrast administration, with areas of necrosis, hemorrhage, cystic degeneration, and fibrous tissue commonly present



# Additional features:

- Calcifications are seen in a minority of cases (~20%).
- Lymph node involvement and distant metastases (especially to the liver and bone) are frequent.
- Peritoneal seeding is common, and PET/CT may reveal multiple nodular hypermetabolic masses throughout the peritoneum
- Hallmark pattern is multifocal peritoneal/omental soft-tissue masses with no identifiable organ of origin.
- Typically with at least one dominant mass, and features of heterogeneous enhancement, necrosis, and possible calcification or hemorrhage