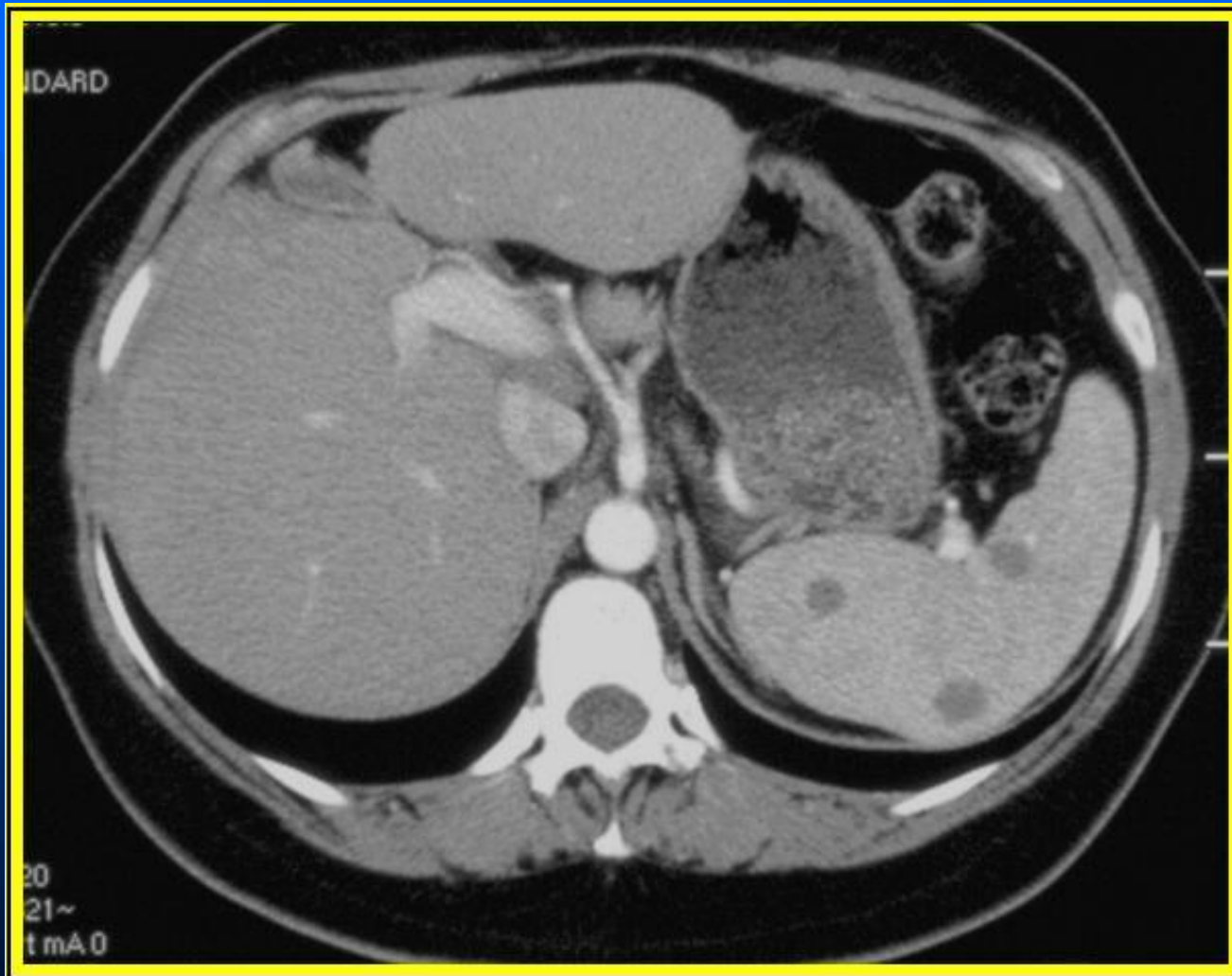


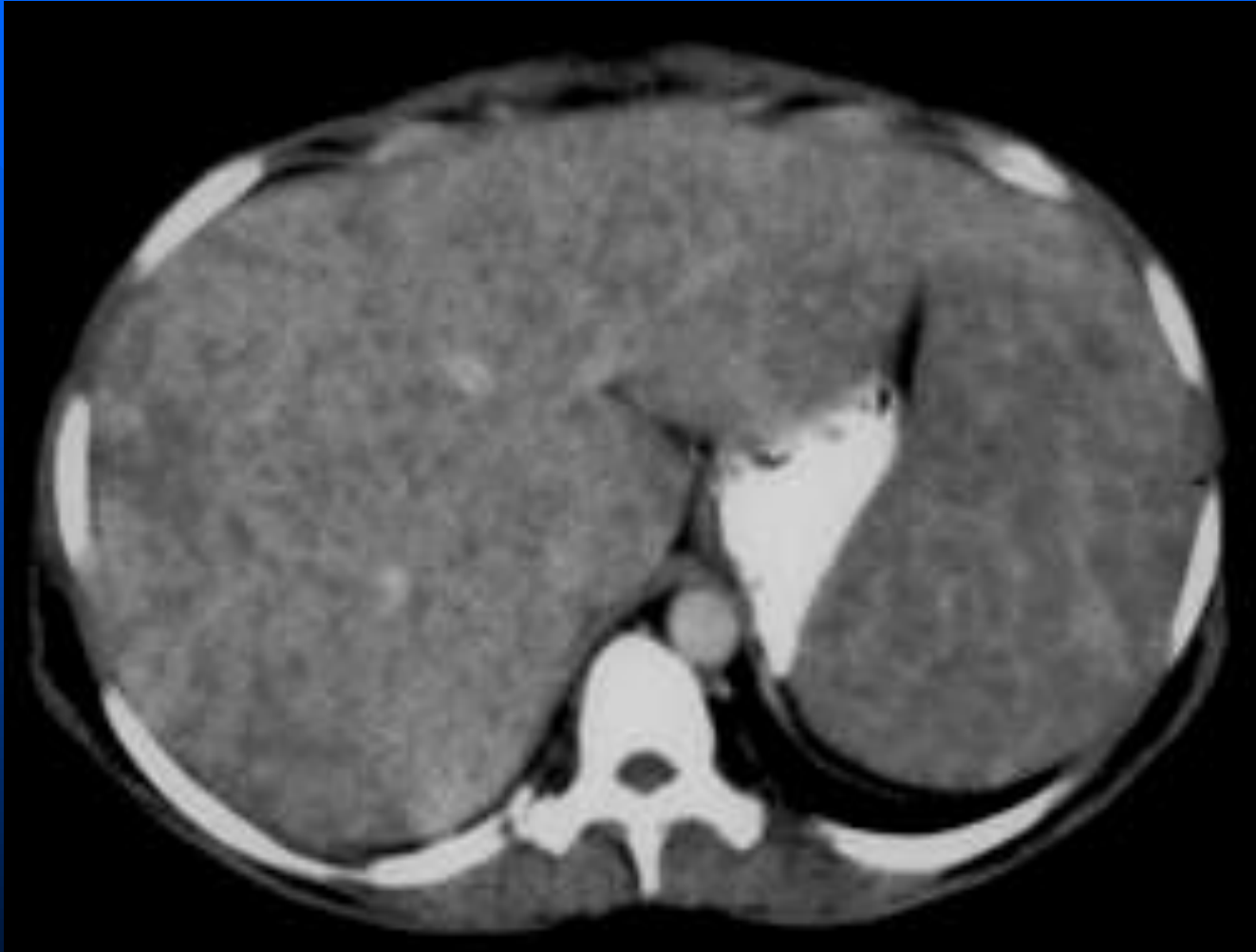
Sarcoid



Splenic Sarcoidosis, massive, heterogeneous spleen



Sarcoidosis

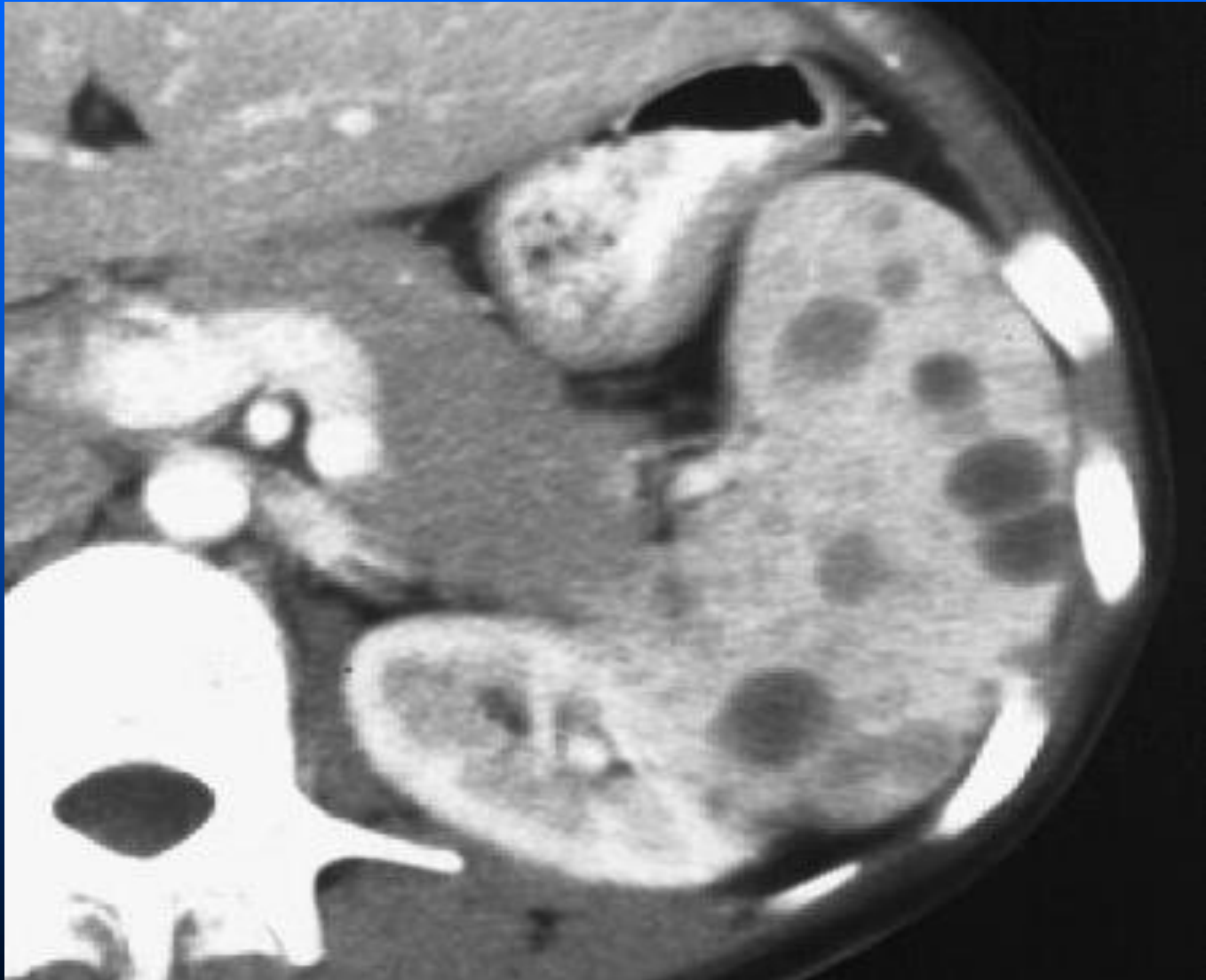


Gauchers disease

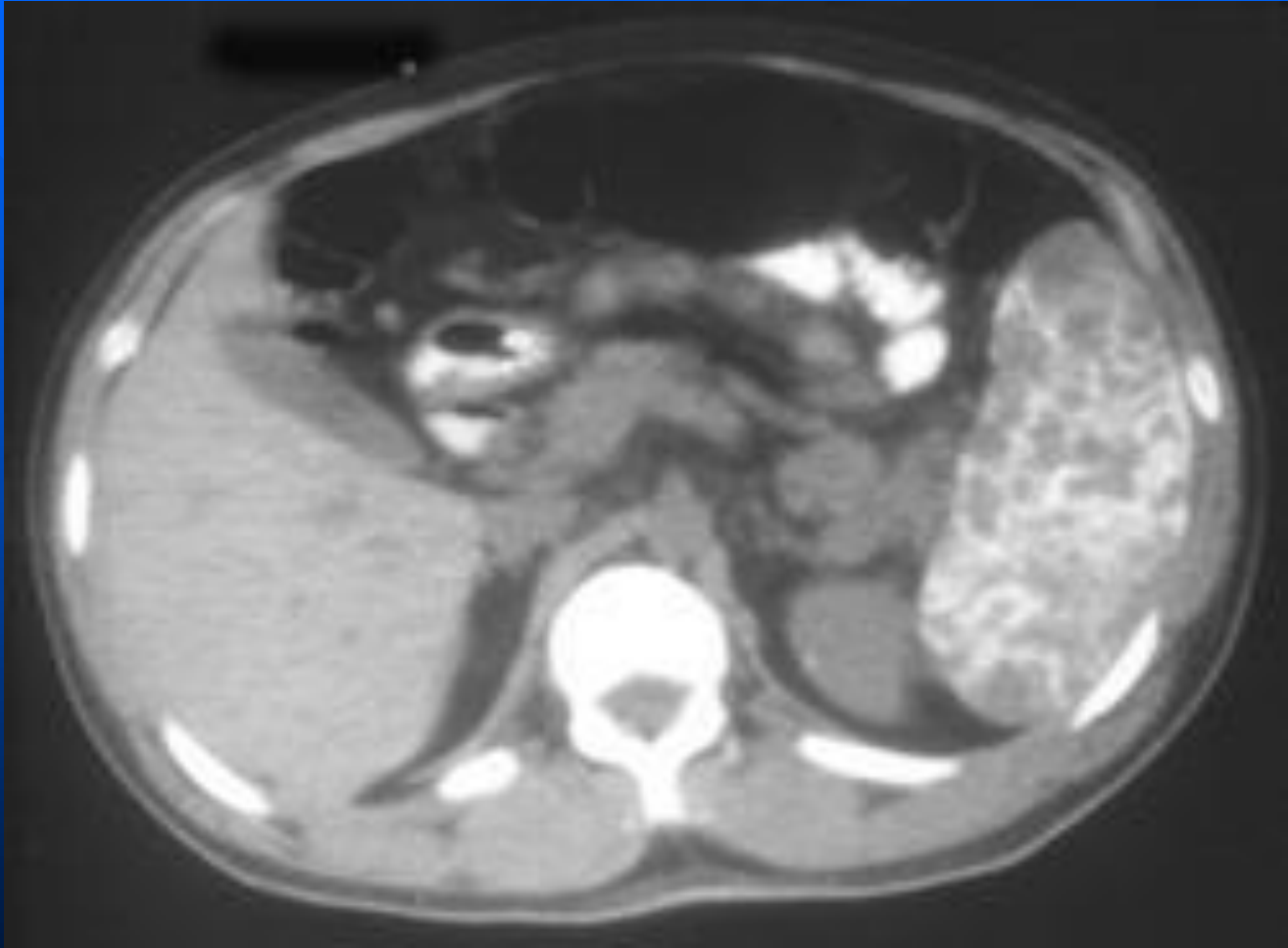


most common **lipid-storage disorder**, and is the most common genetic disease affecting Jewish people of Eastern European ancestry

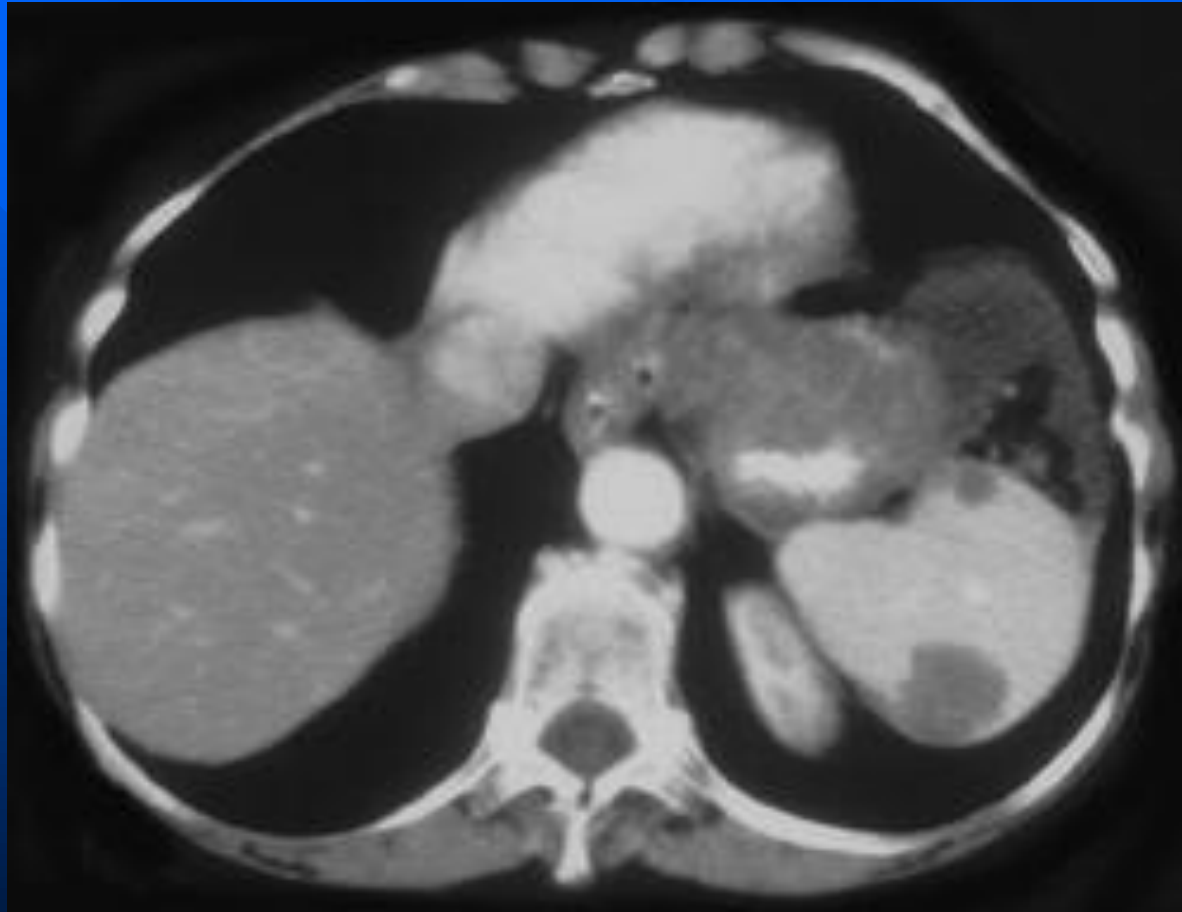
Pneumocystis Carinii Infection



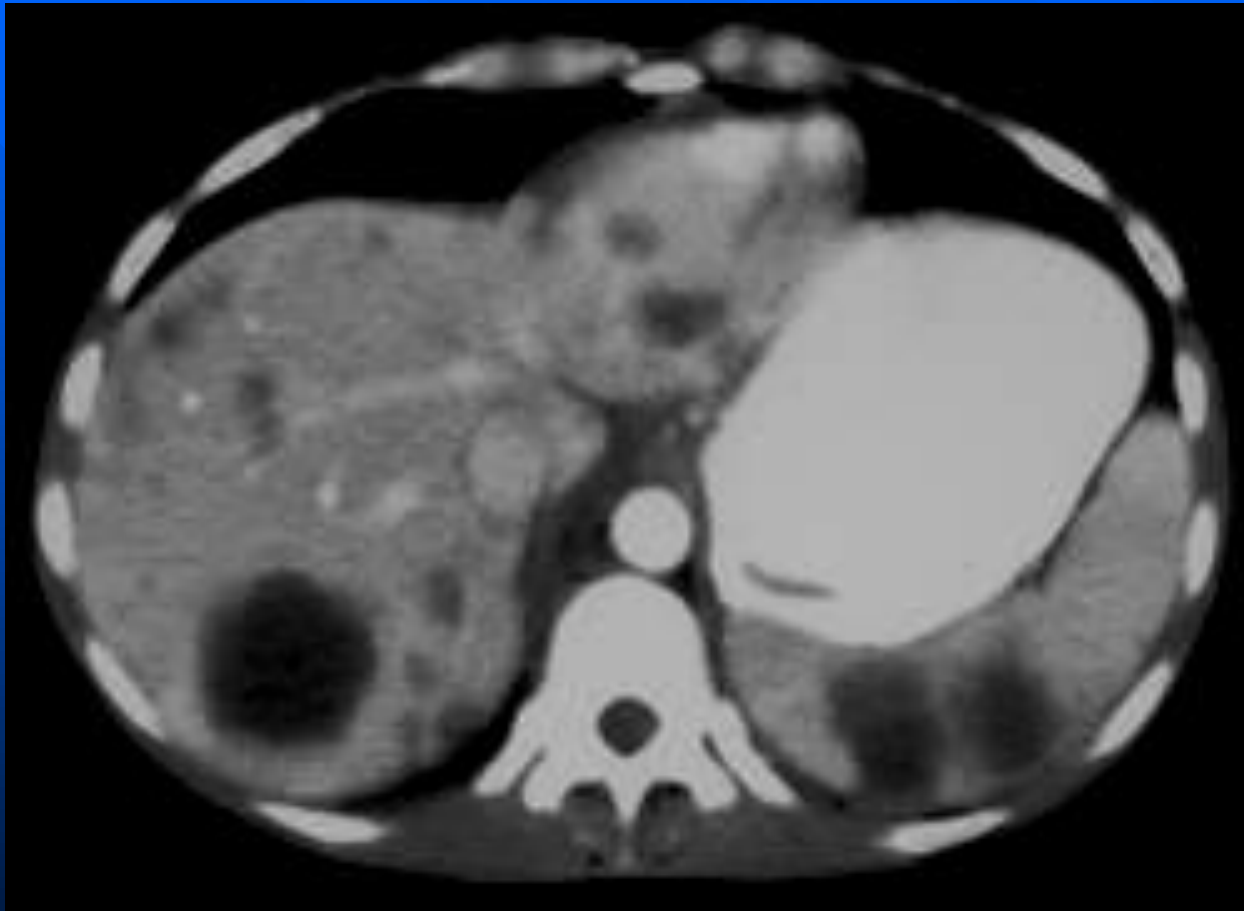
PCP



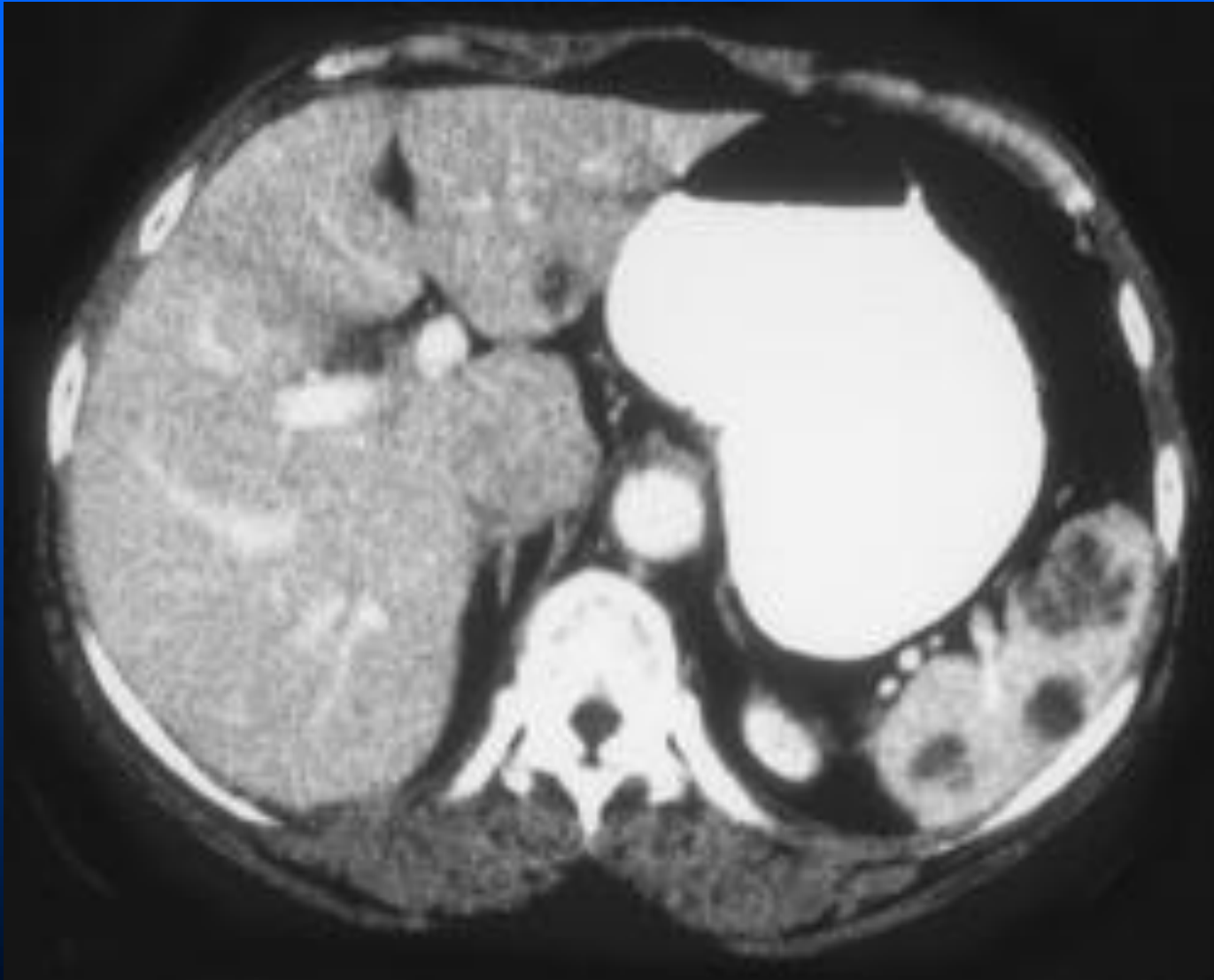
Metastases to the spleen



Ovarian cancer with splenic and liver metastases



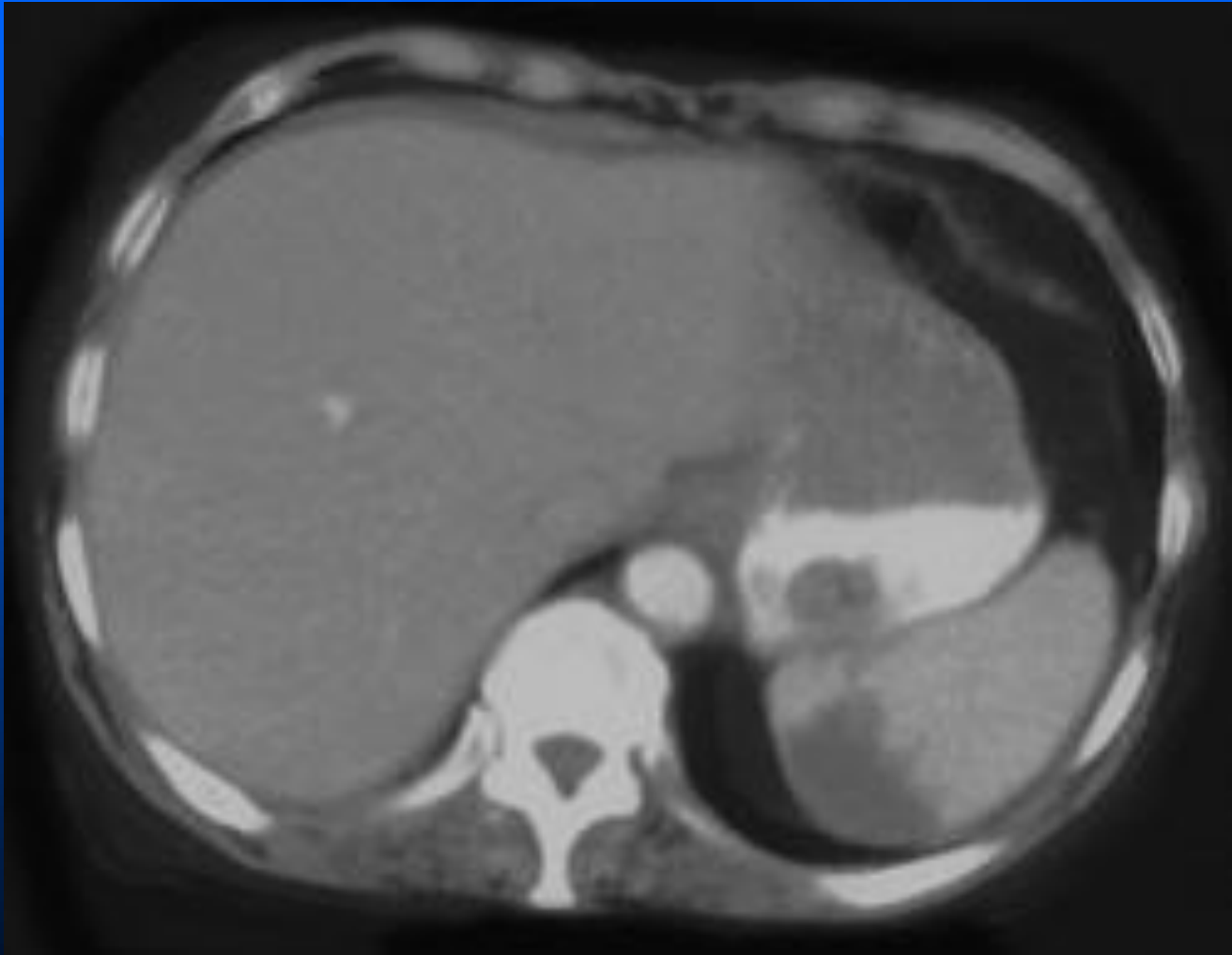
Splenic hemangioma



Cystic spleen differential

- MAI
- Lymphoma
- PCP
- Gaucher's
- Sarcoidosis
- Multiple Splenic Abscesses
- Multiple Splenic Hemangiomas
- Cat Scratch in Kids

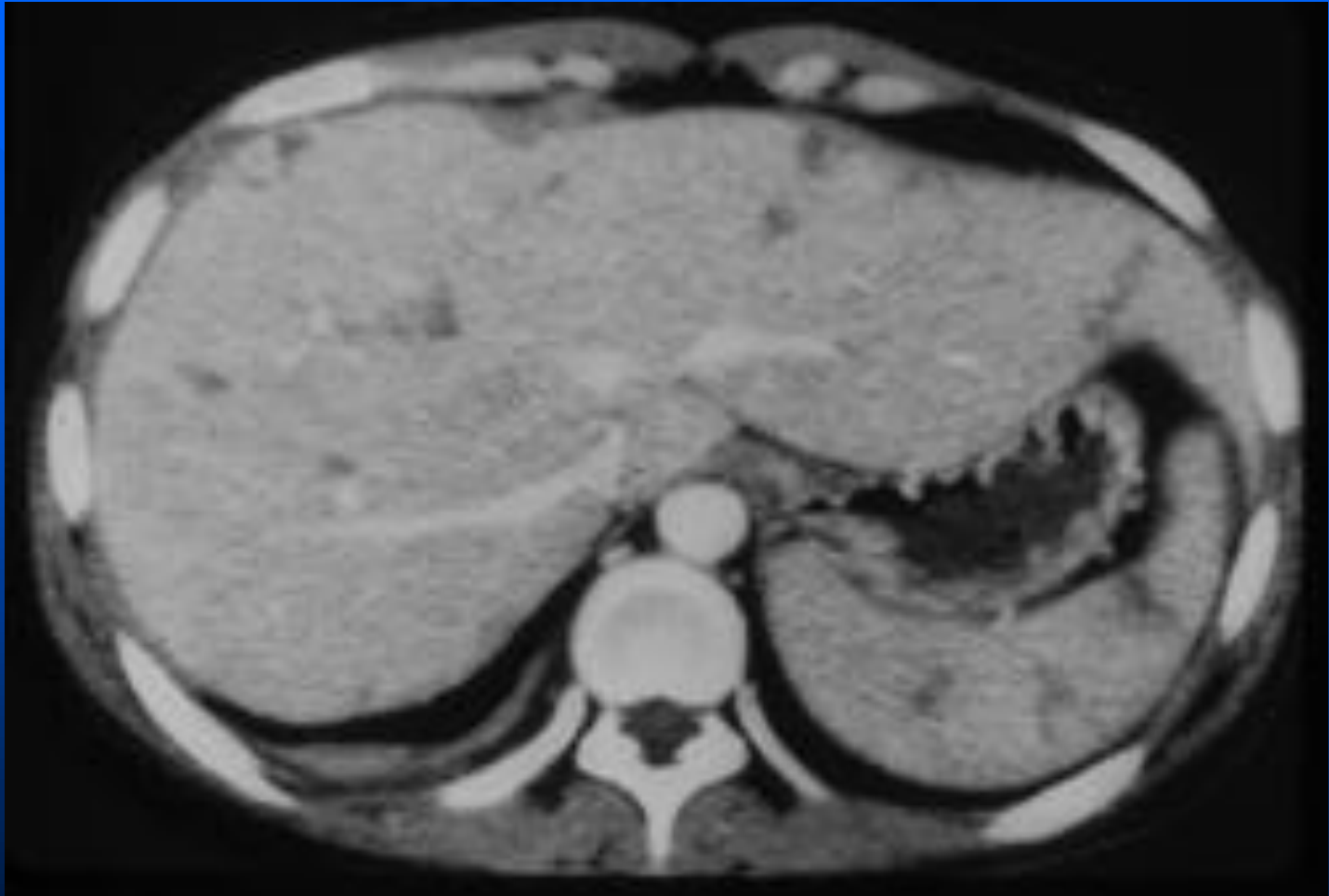
Splenic infarcts



MAI spleen



TB



Lymphoma



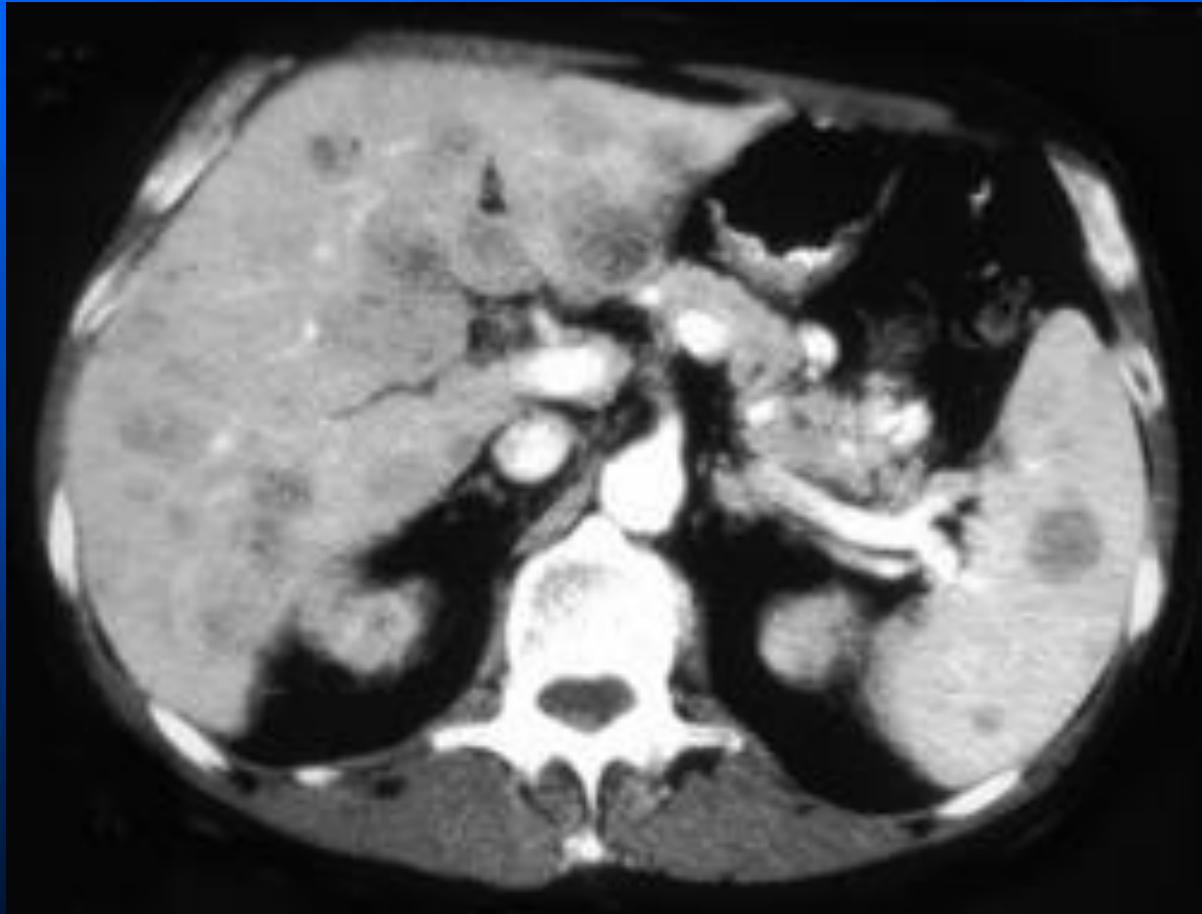
Lymphoma



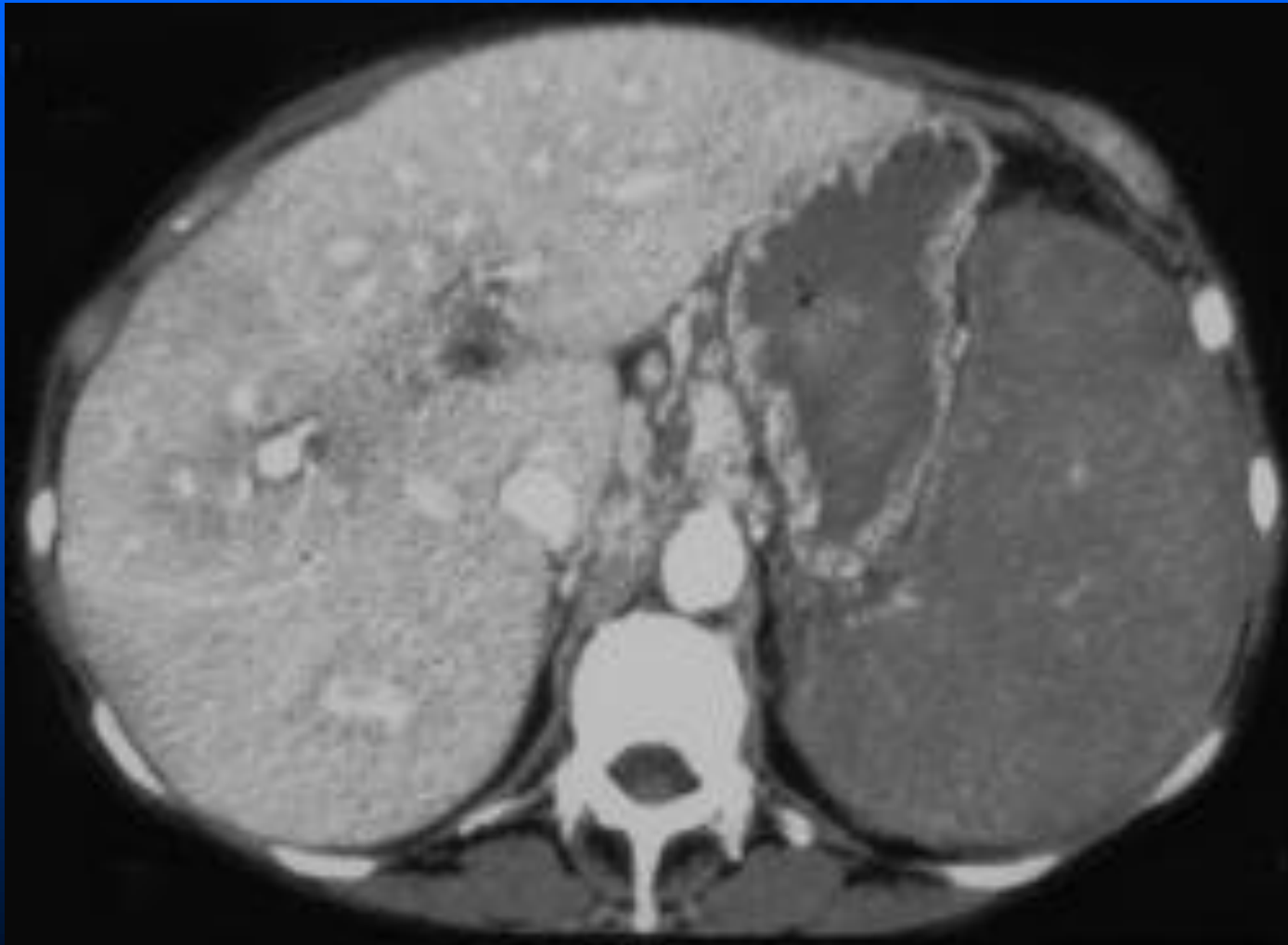
Lymphoma



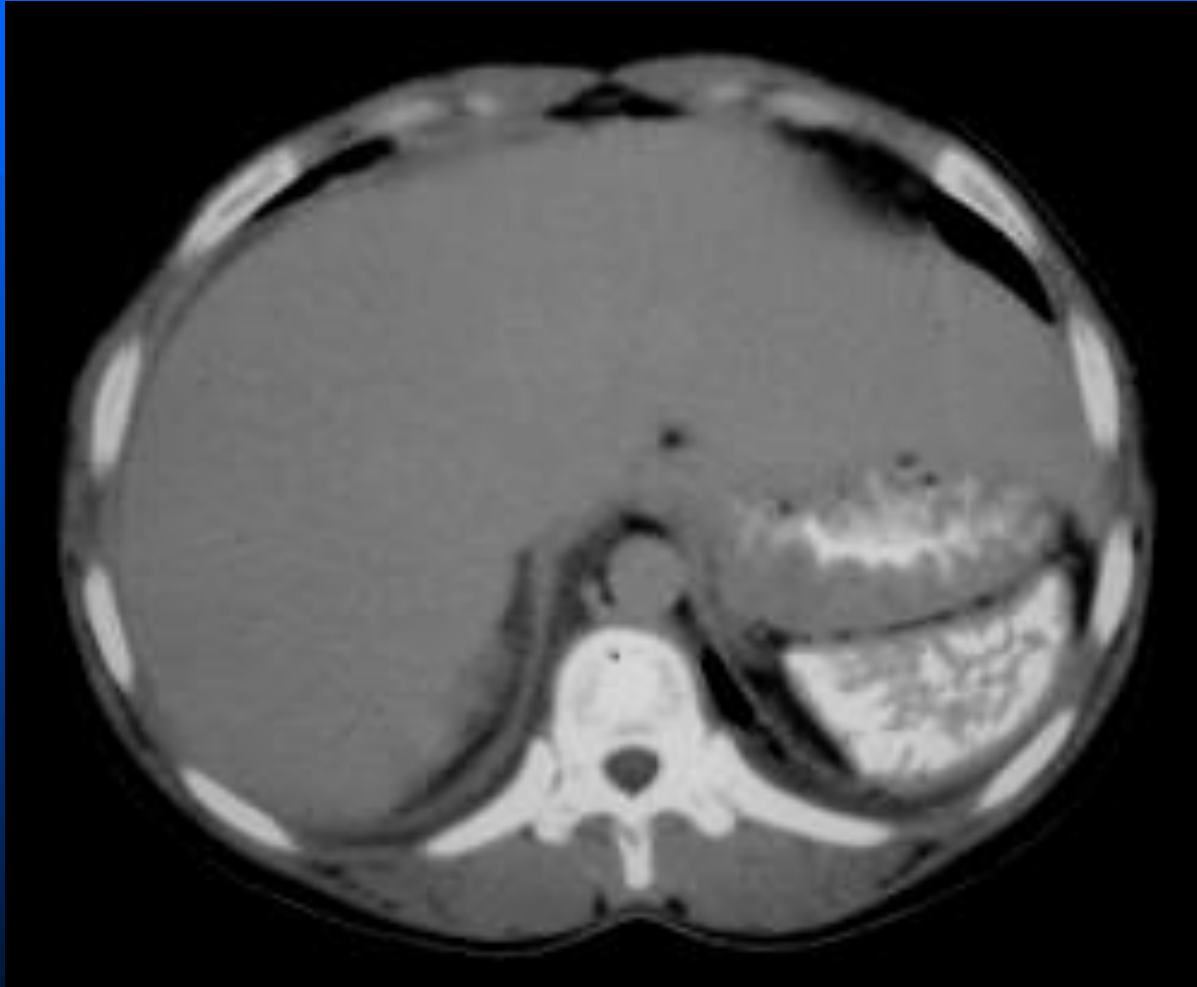
Lymphoma



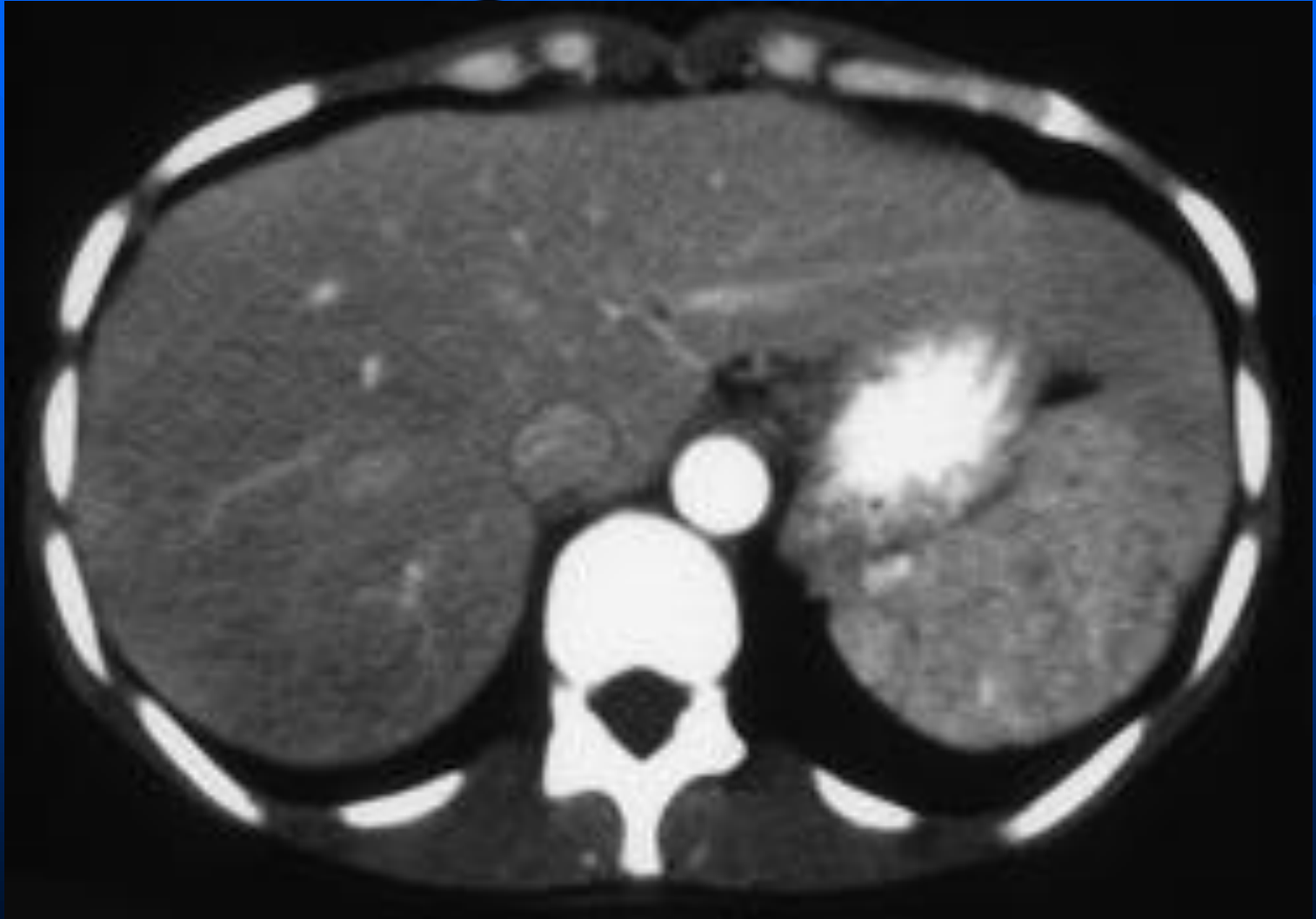
CLL



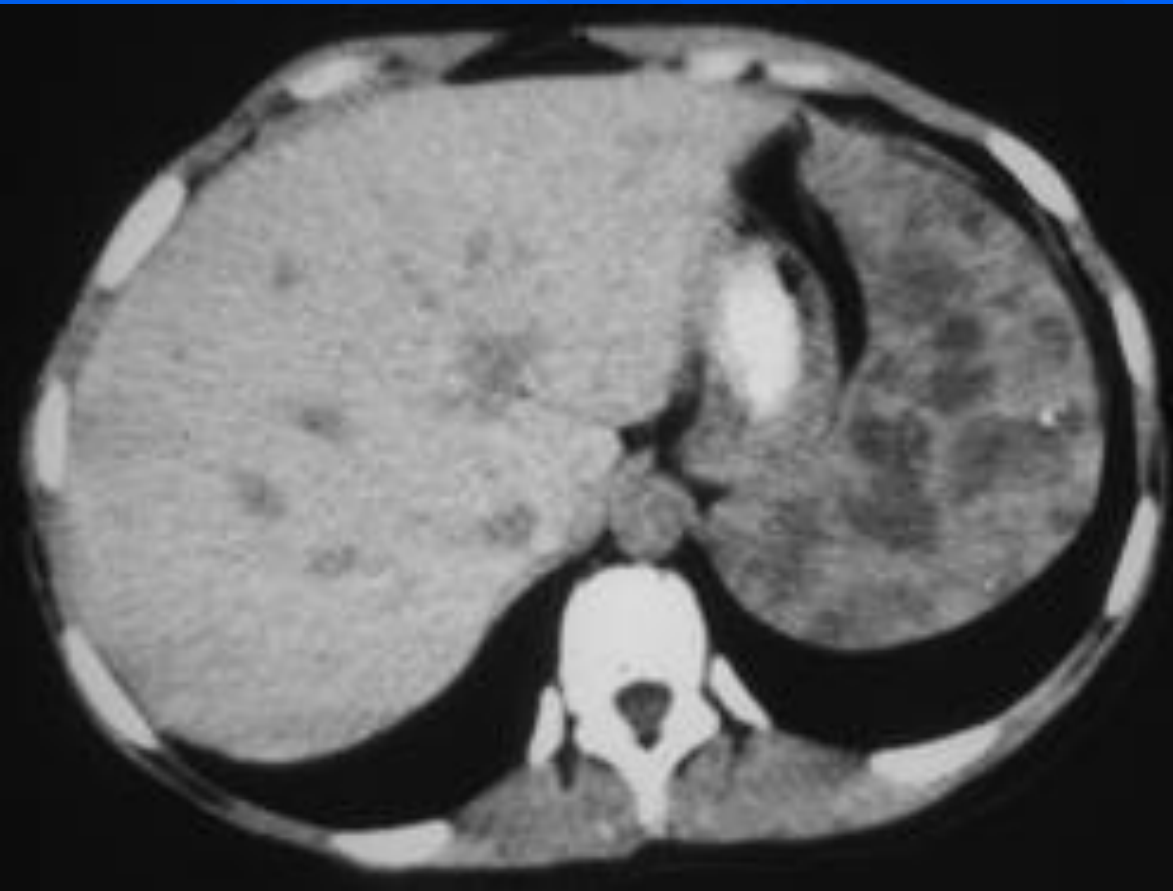
Sickle cell disease (SS)



Candidiasis spleen in leukemia patient



Splenic hemangioma in patient with Klippel Trenaunay Weber (KTW) syndrome

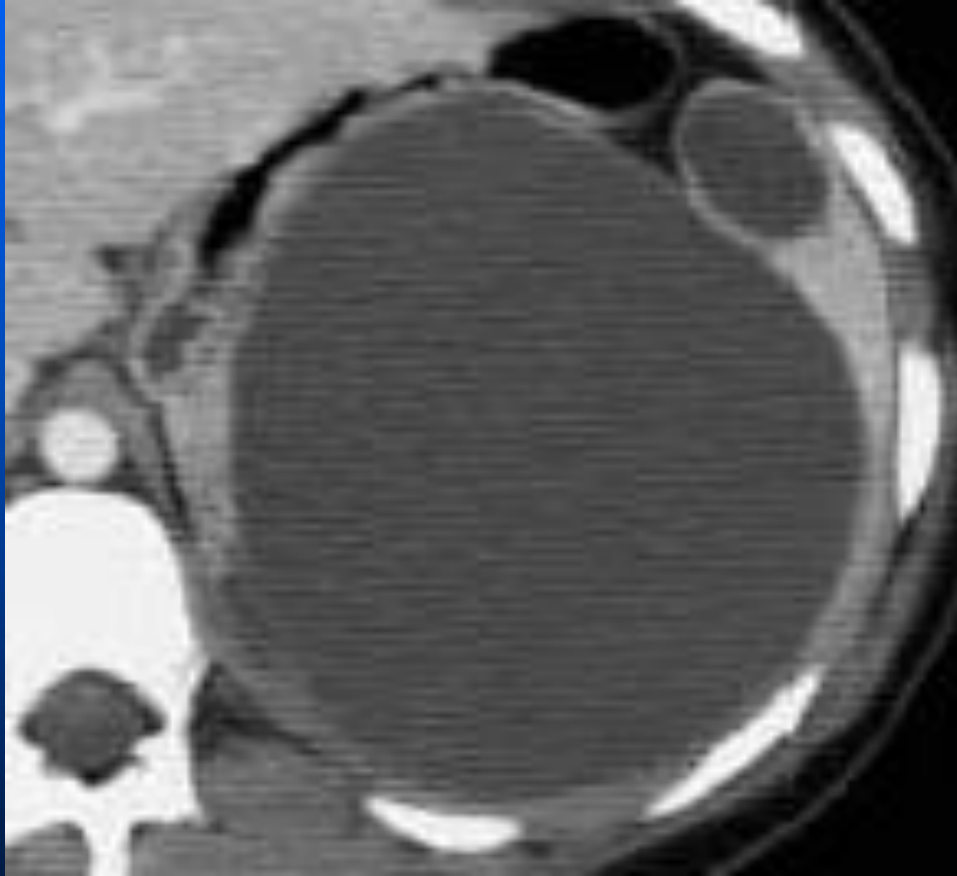


triad of port-wine stain,
varicose veins, and
bony and soft tissue
hypertrophy involving
an extremity

Angiosarcoma

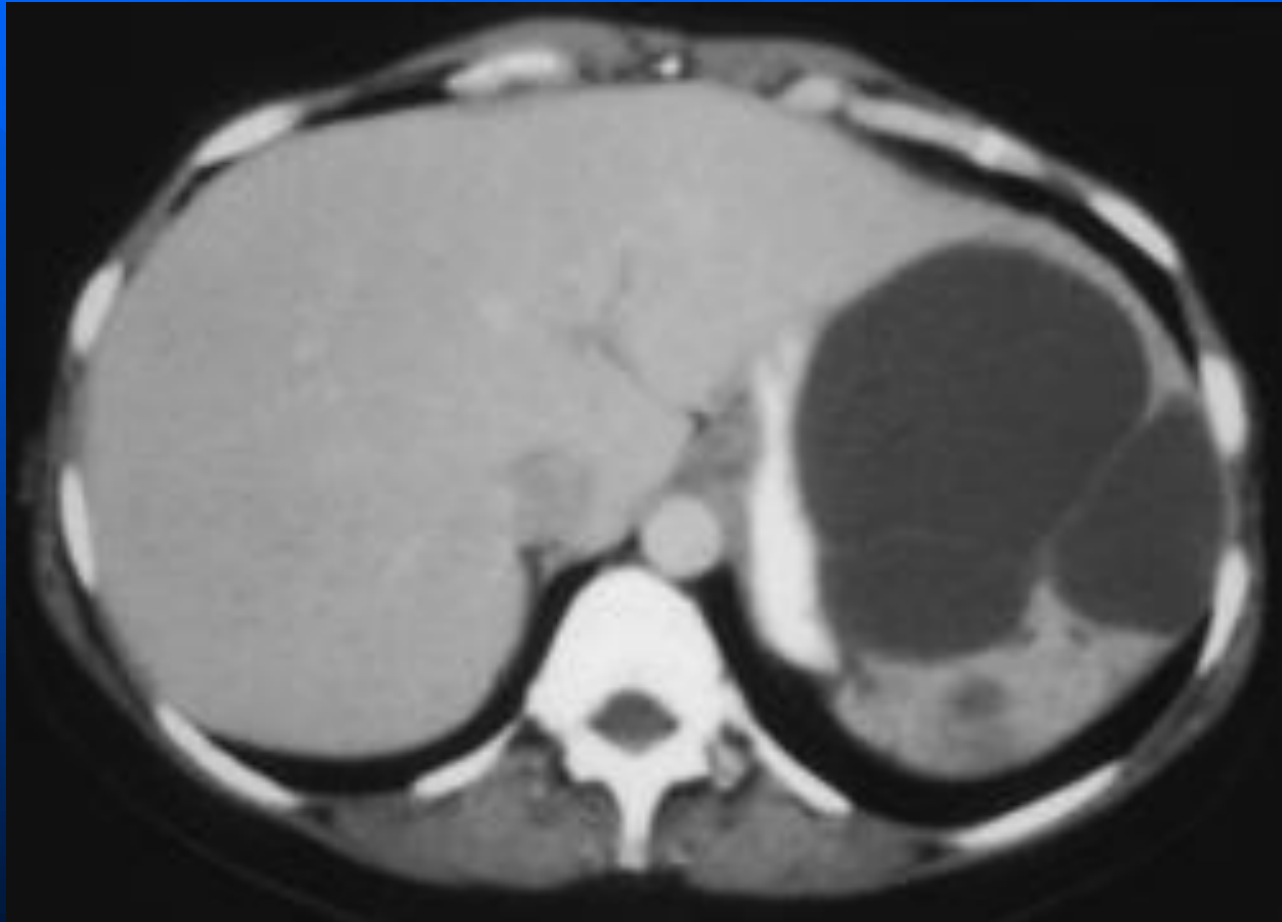


Epidermoid Cyst

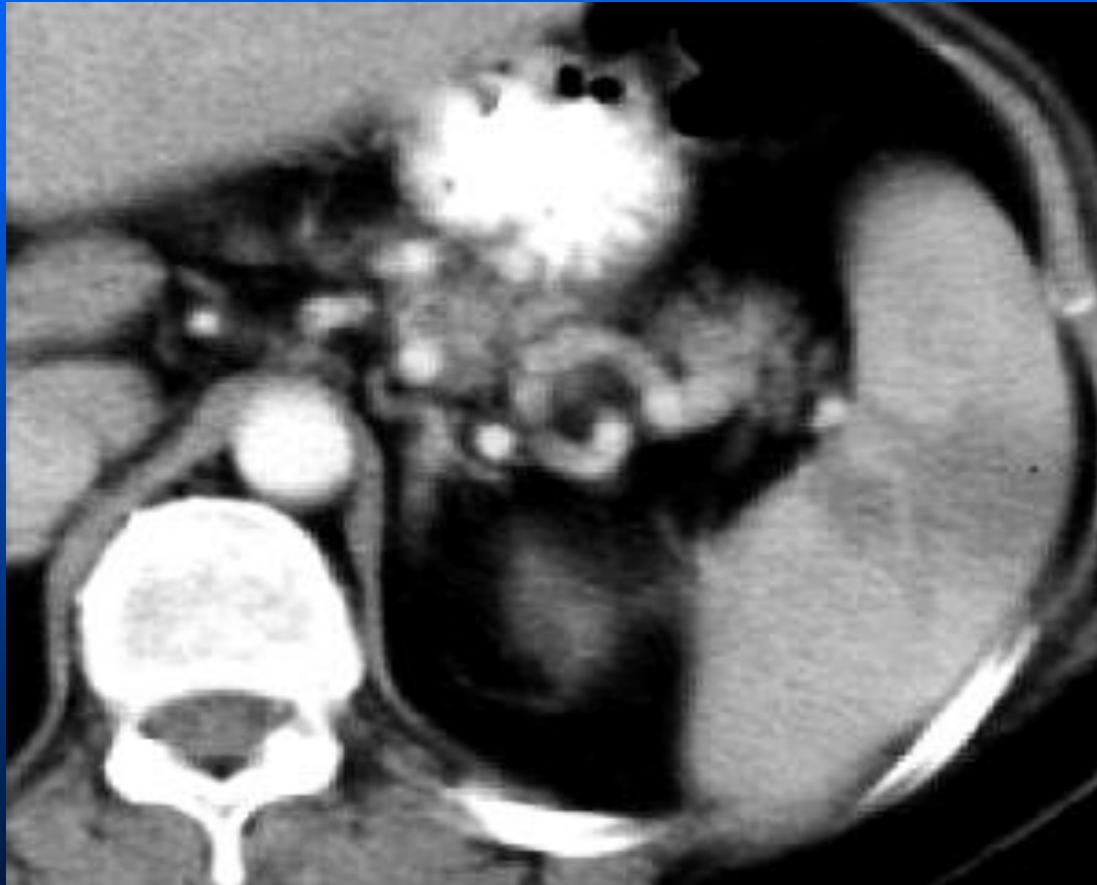


- *primary or true and secondary or false cysts*
- *This is a true cyst.*
- *"true" cysts as they possess an inner epithelial lining,*
- *"false" cysts which have no cellular lining, and are usually related to prior trauma. More common*

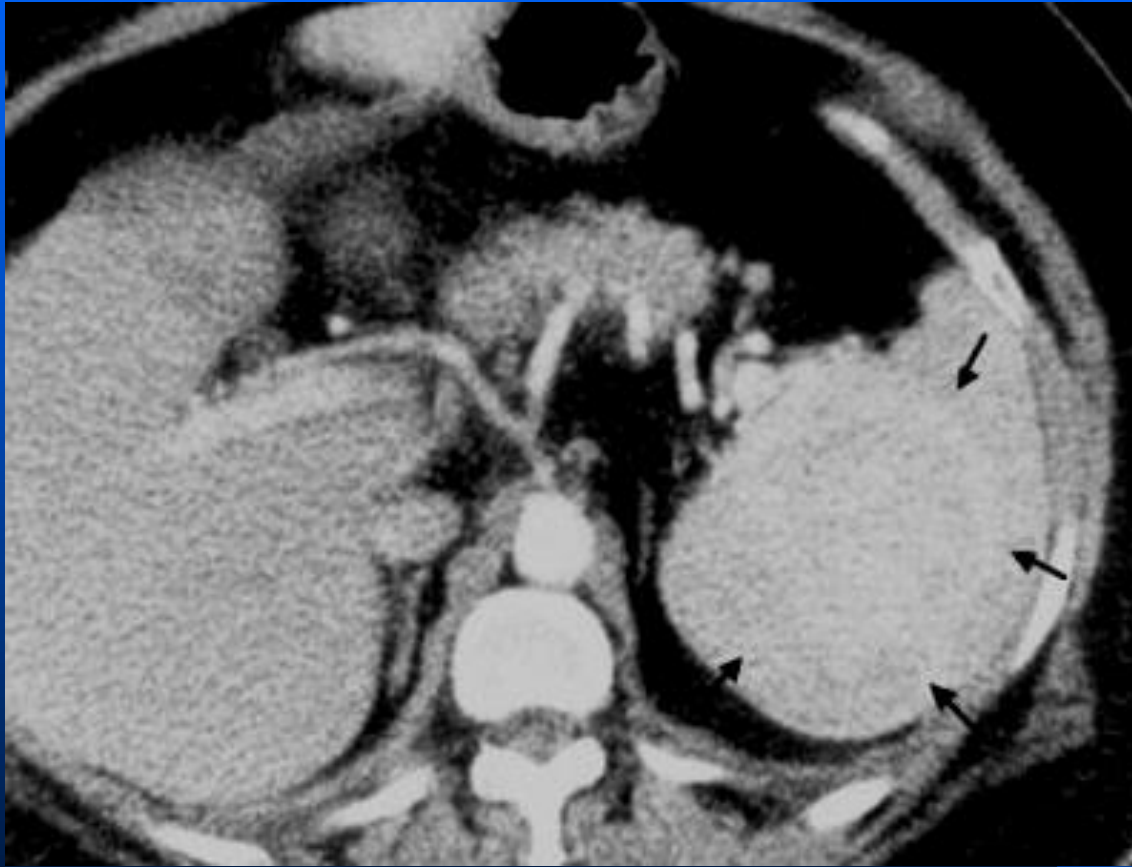
Multiple splenic cysts



Splenic Infarct



Splenic hamartoma



Iso- or slightly hypodense on non-enhanced CT, whereas it tends to uptake discretely more contrast material than splenic parenchyma

Splenic abscess

