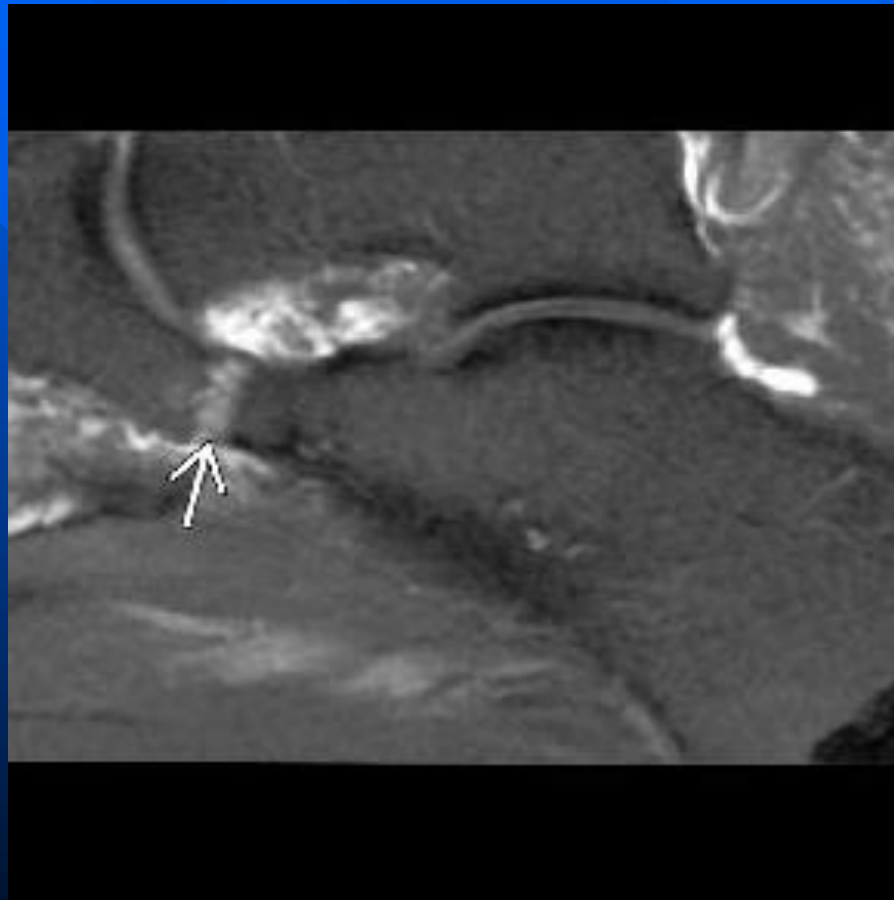


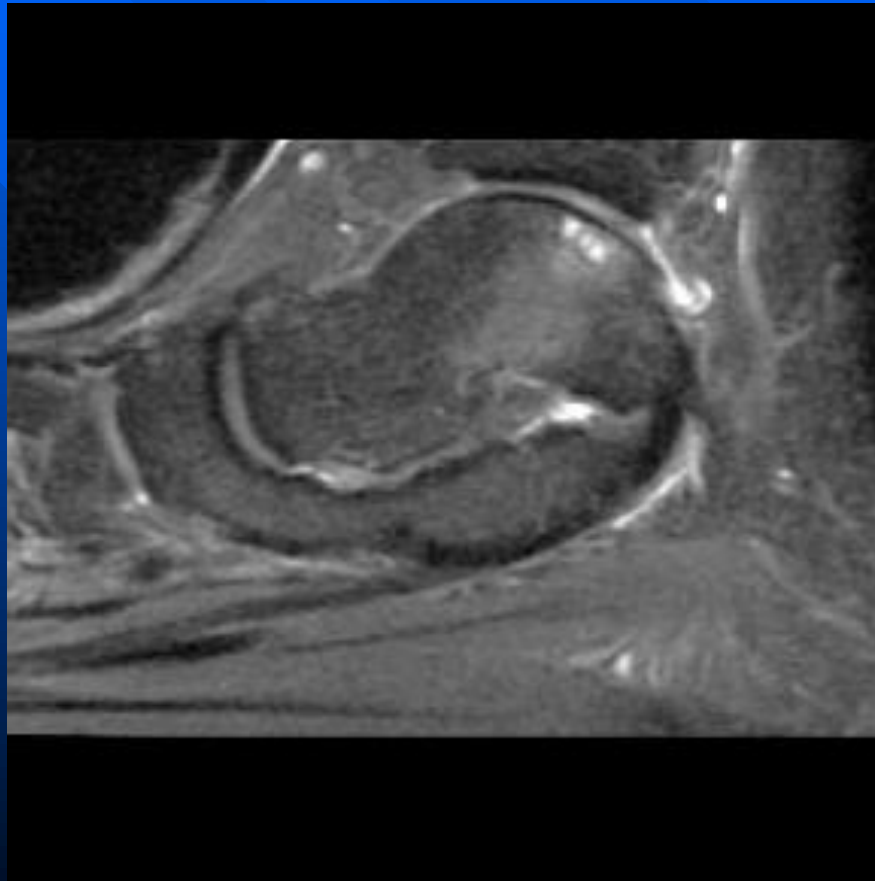
Tarsal coalition

- Best diagnostic clue:
 - Approximation or incorporation of talus + calcaneus through middle facet vs. calcaneus to navicular through anterior facet
- 90% coalition = talocalcaneal + calcaneonavicular
- Tarsal coalition = most common cause of peroneal spastic flatfoot
- Limitation of subtalar joint motion; pain
- Can be bilateral

Calcaneonavicular fibrous coalition



Calcaneonavicular Coalition



Fibrocartilagenous talocalcaneal coalition



Talocalcaneal synostosis



Talocalcaneal coalition

