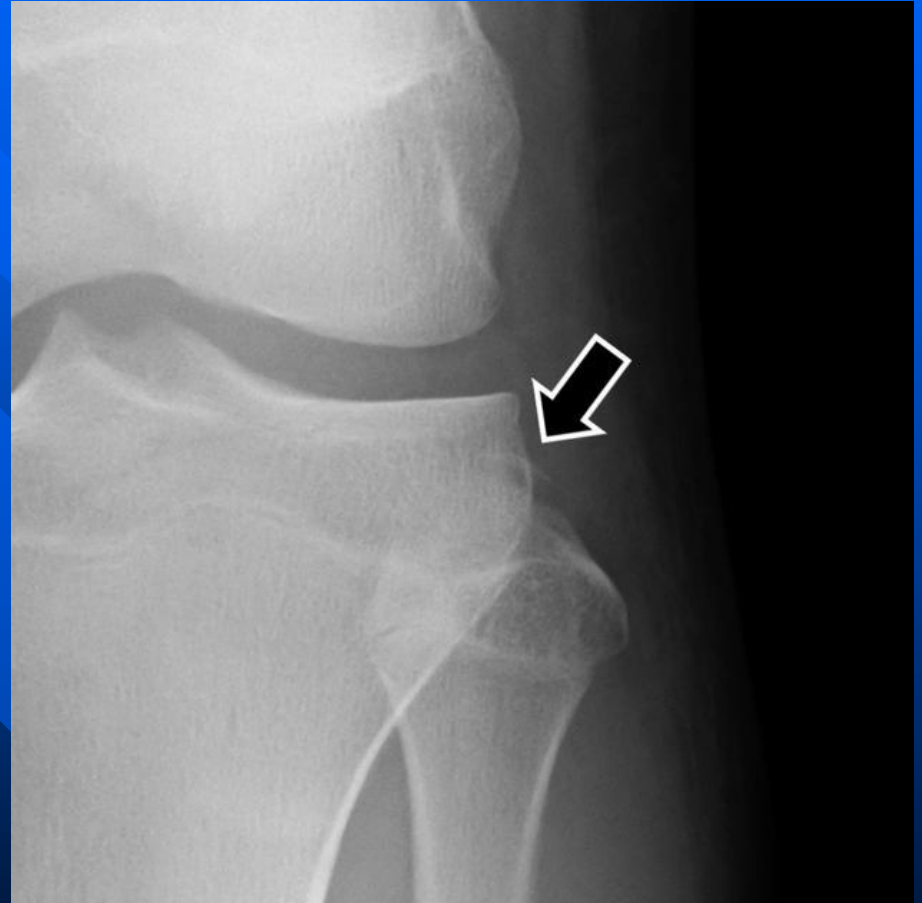
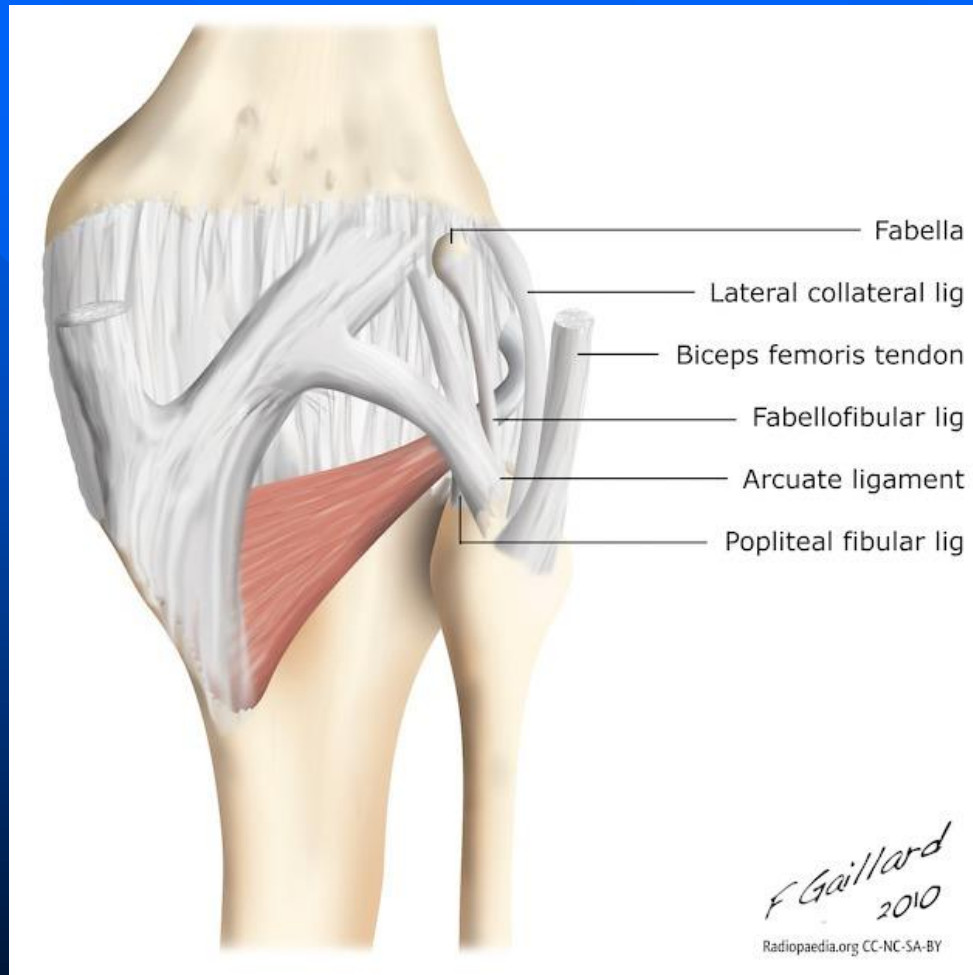


# Arcuate sign

- Subtle but important finding, represents an avulsion fracture of the proximal fibula at the site of insertion of the arcuate ligament complex, and is usually associated with cruciate ligament injury (~90% of cases) .
- The fracture fragment is attached to the lateral (fibular) collateral ligament, the biceps femoris tendon, or both.





# Arcuate ligamentous complex)

- Posterolateral ligamentous complex (also known as the arcuate ligamentous complex)
- Lateral (fibular) collateral ligament
- Arcuate ligament
- Popliteofibular ligament
- Posterior third of the lateral capsule
- Fabellofibular ligament (when a fabella is present)