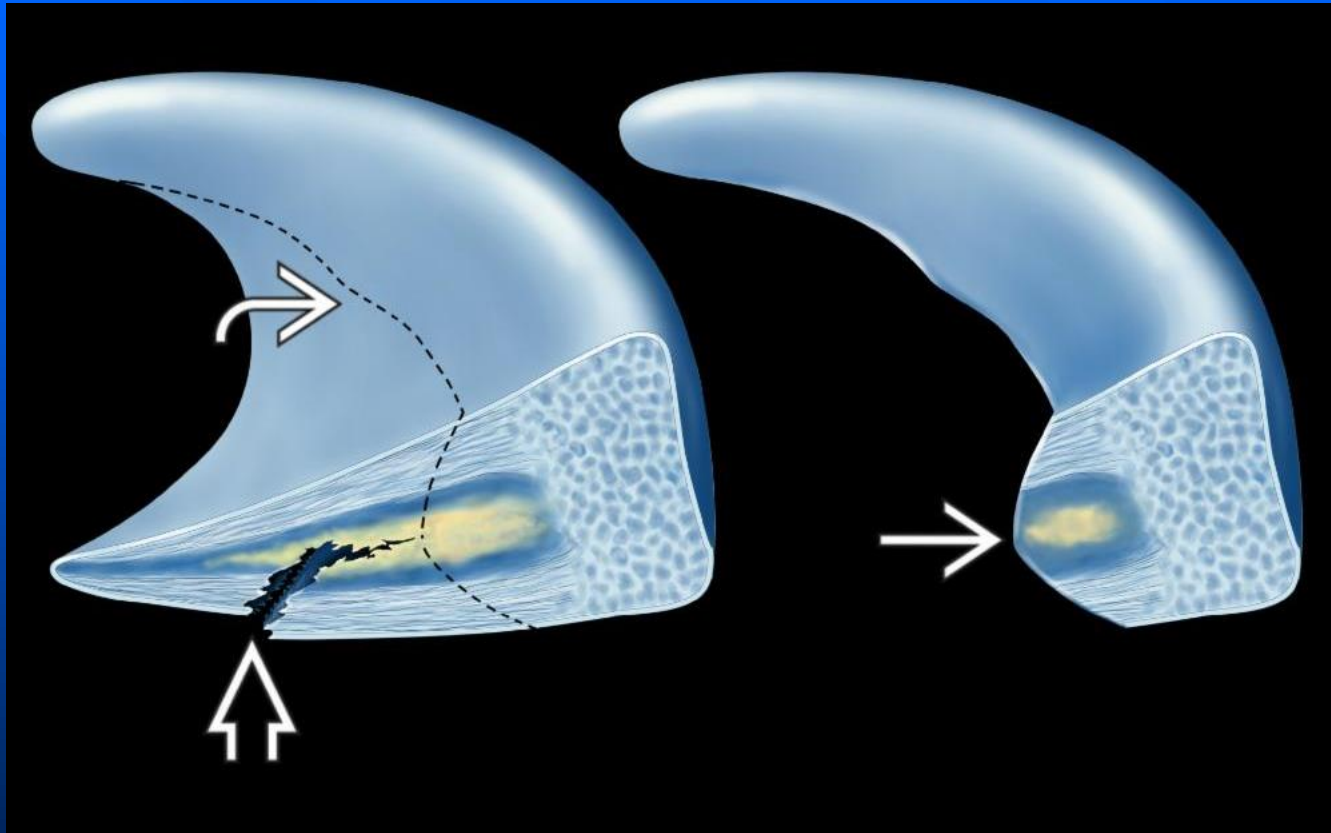


Menisci: Postoperative Imaging

- Direct MR arthrography (88% accuracy for retear vs. 66% for conventional MR)



Sagittal graphic demonstrates the origin of signal in a postoperative meniscus. The figure on the left shows a complex tear (white open arrow) and the line of resection (white curved arrow) beyond the tear margin. The figure on the right shows postoperative meniscus with central degenerative signal now extending to the new articular surface (white solid arrow).