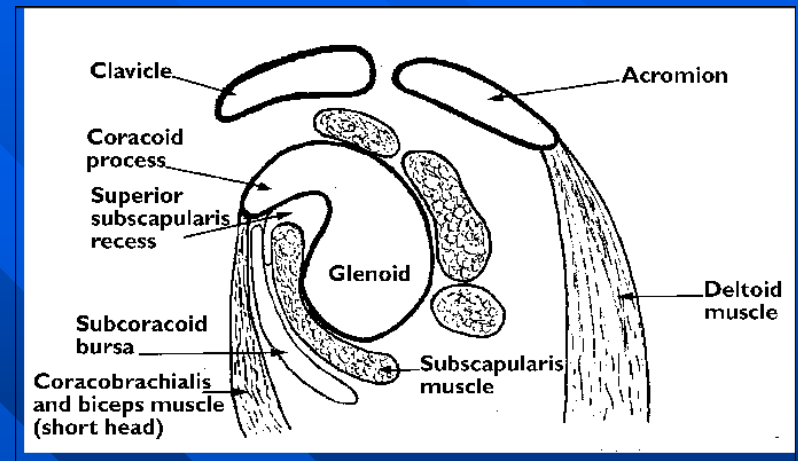
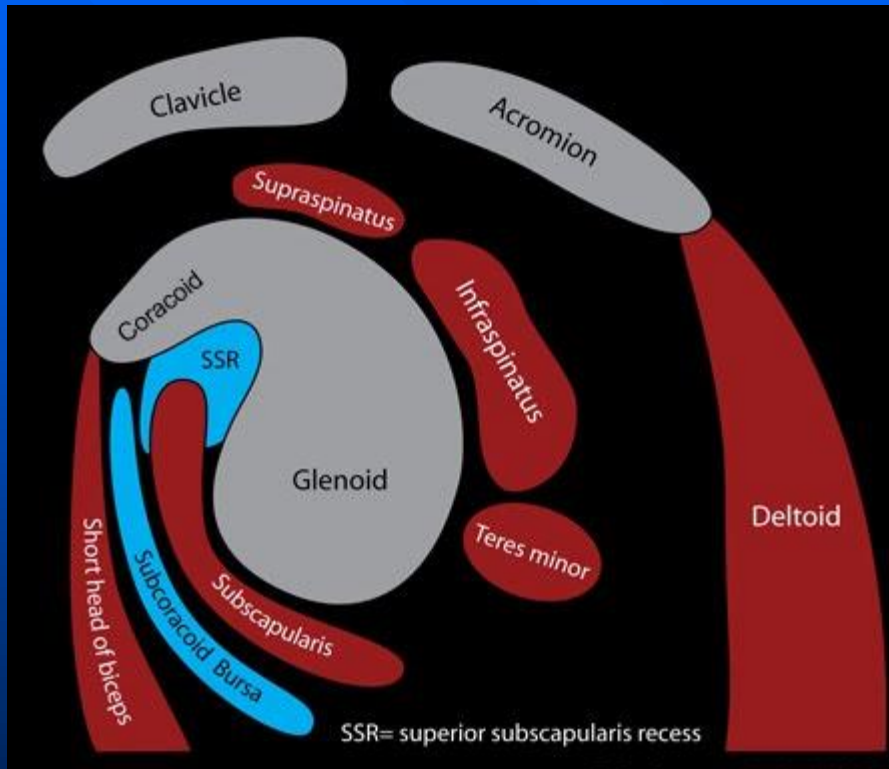


# Bursa



# Subscapularis bursa

- **Superior subscapularis recess.**
- Fluid in the subscapularis bursa may simply represent physiologic joint fluid.
- Fluid in the subcoracoid bursa represents a pathologic process, such as bursitis, or results from communication with another fluid-containing structure.

# Subcoracoid bursa

- Fluid in the bursa does not normally communicate with the joint unlike subscapularis recess.
- subcoracoid effusions were often associated with anterior rotator cuff tears, including tears of the rotator interval.