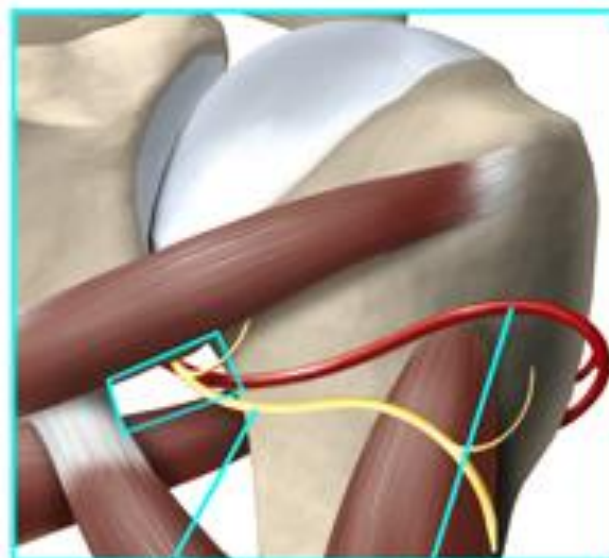
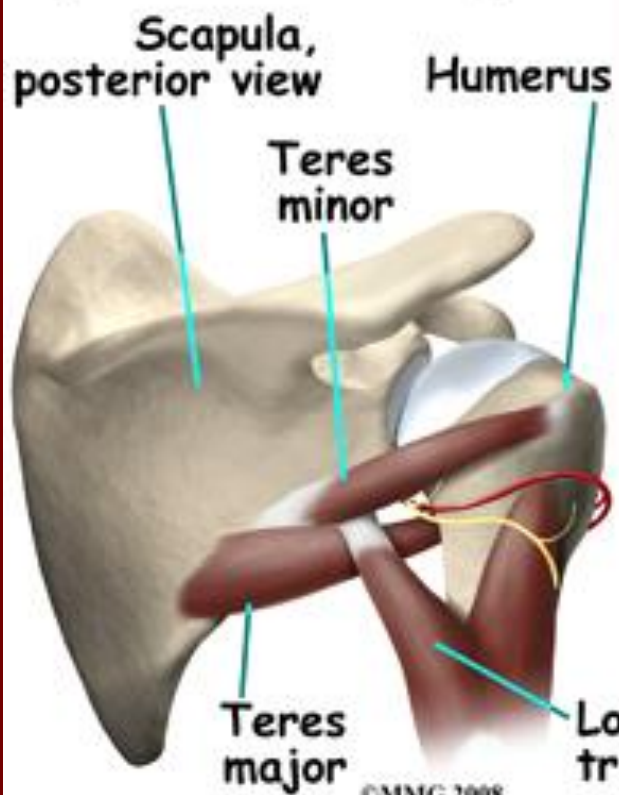


Quadrangular space syndrome

- Patients present with posterior shoulder pain and paresthesia over the lateral arm.
- Neurovascular compression syndrome of the posterior humeral circumflex artery (PHCA) and/or the axillary nerve or one of its major branches in the quadrangular space.
- Most commonly occurs when the neurovascular bundle is compressed by fibrotic bands within the QS and/or by hypertrophy of the muscle boundaries.
- Fibrotic bands form as the result of trauma, with resultant scarring and adhesions.
- Cases reported in throwing athletes, tennis players, and in the dominant arm of volleyball players support the fibrosis and hypertrophy based hypotheses.

Quadrilateral Space

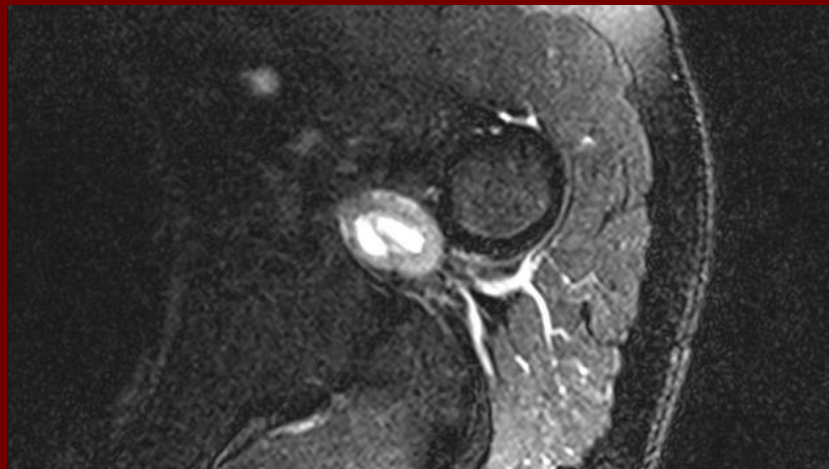
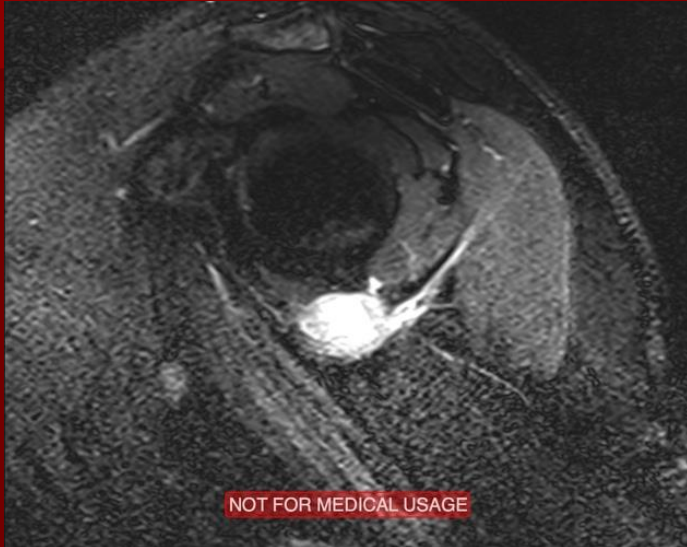


Quadrilateral (quadrangular) space syndrome



Distal branch of axillary nerve affected effects deltoid and parthesias over shoulder

Ganglion Cyst



Fatty infiltration deltoid

