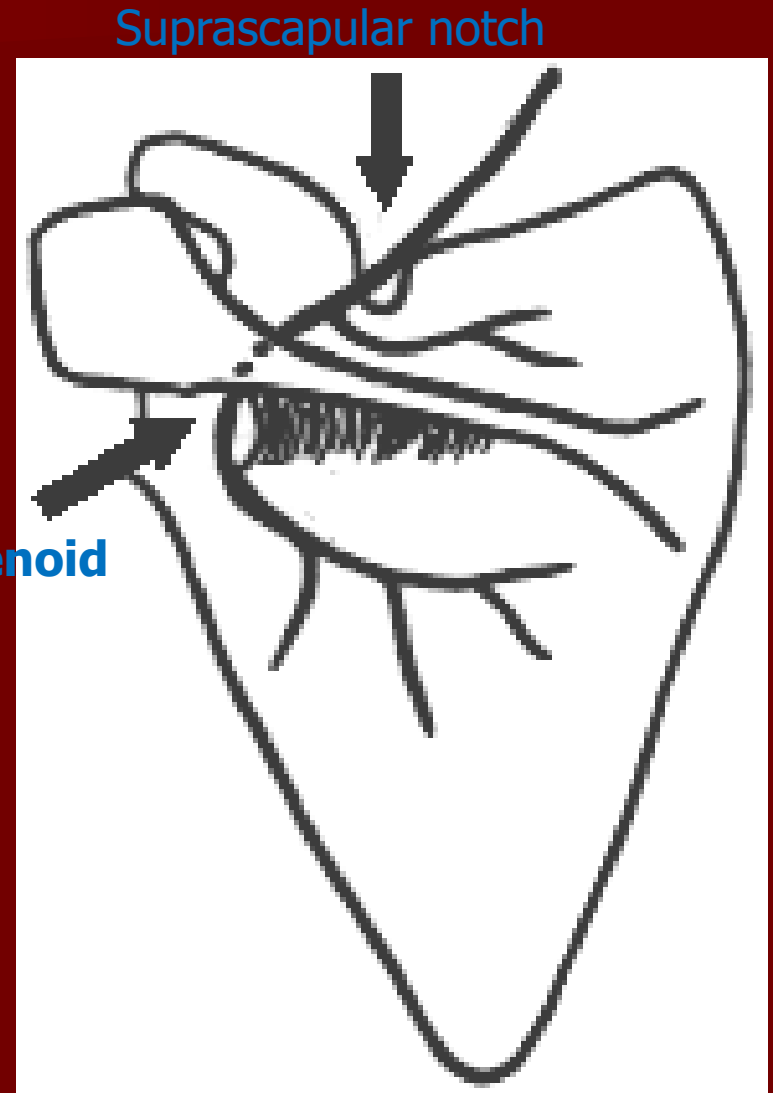


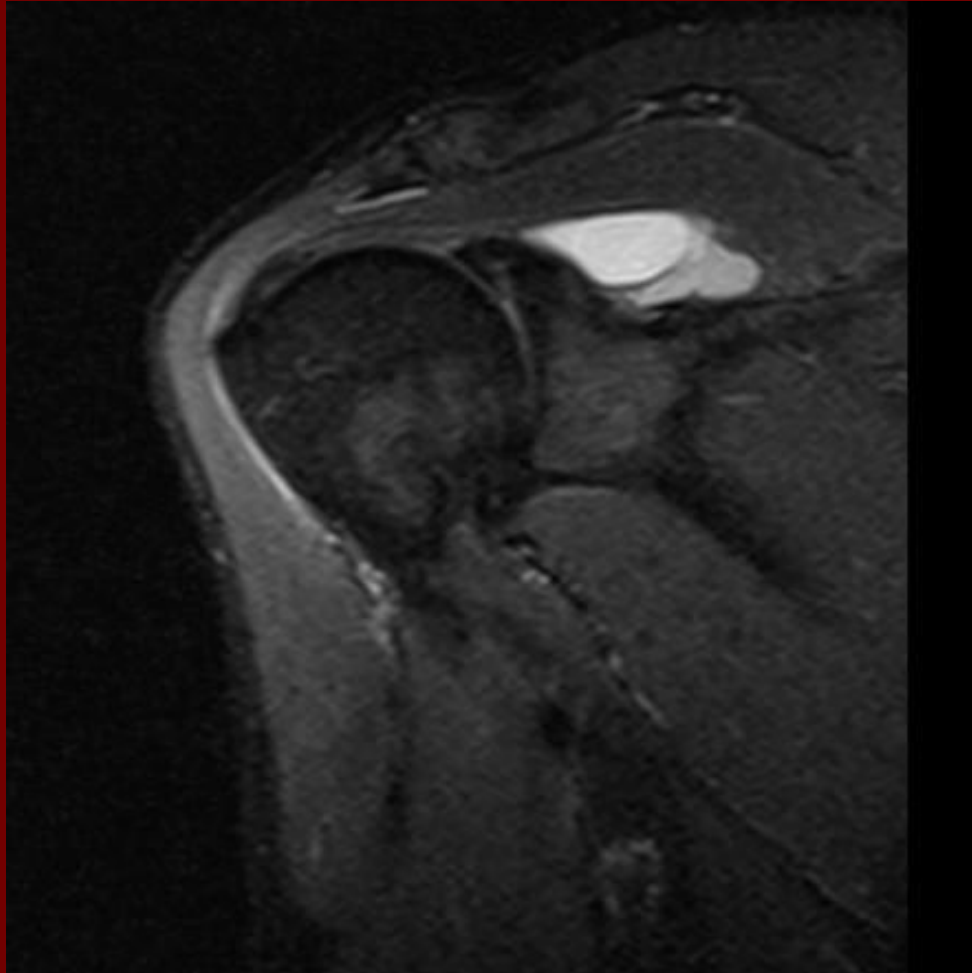
Suprascapular Neuropathy

- Associated with infraspinatus muscle atrophy.
- Suprascapular nerve innervates sup and infraspinates at Suprascapular notch
- infraspinates at Spinoglenoid

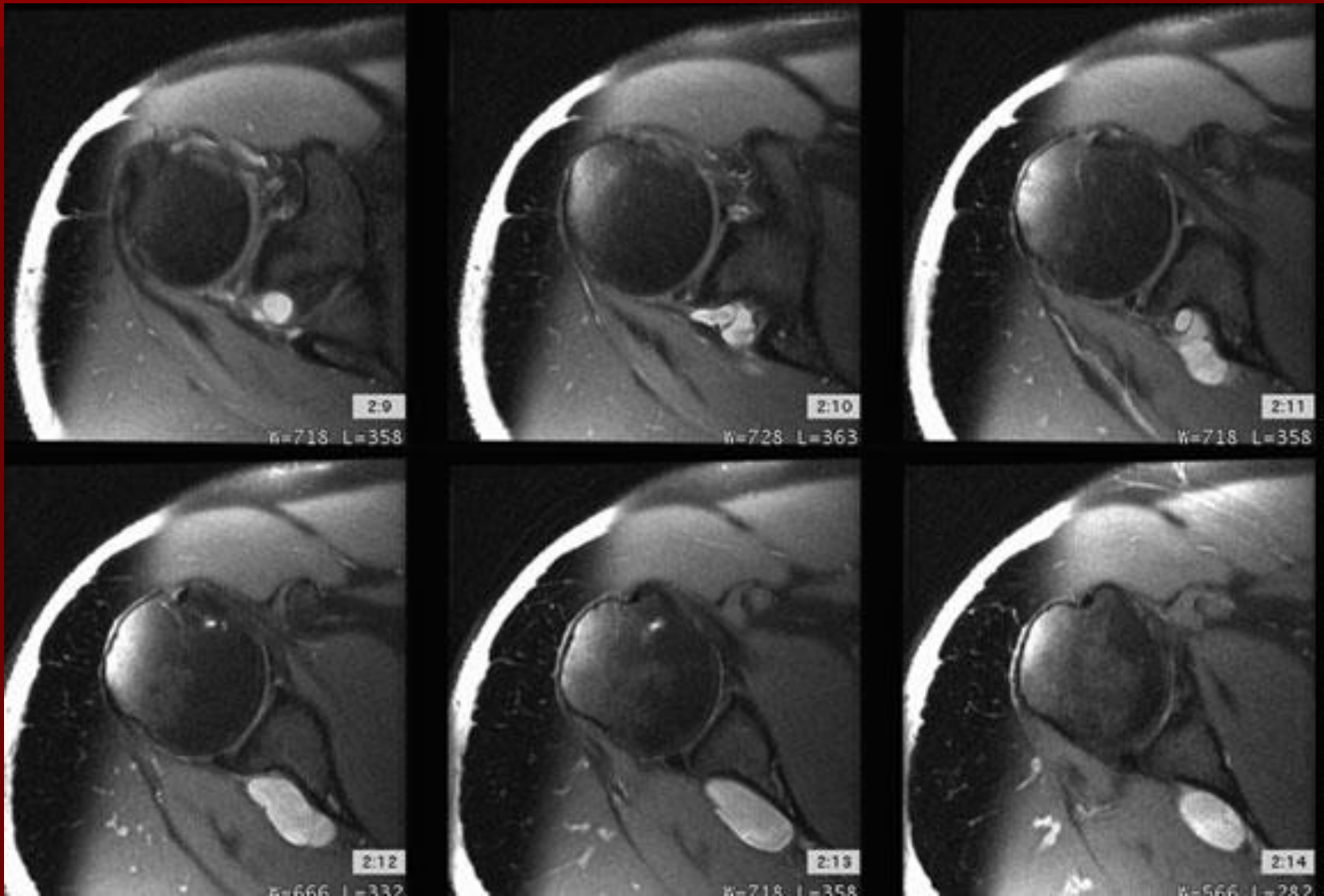
Spinoglenoid notch



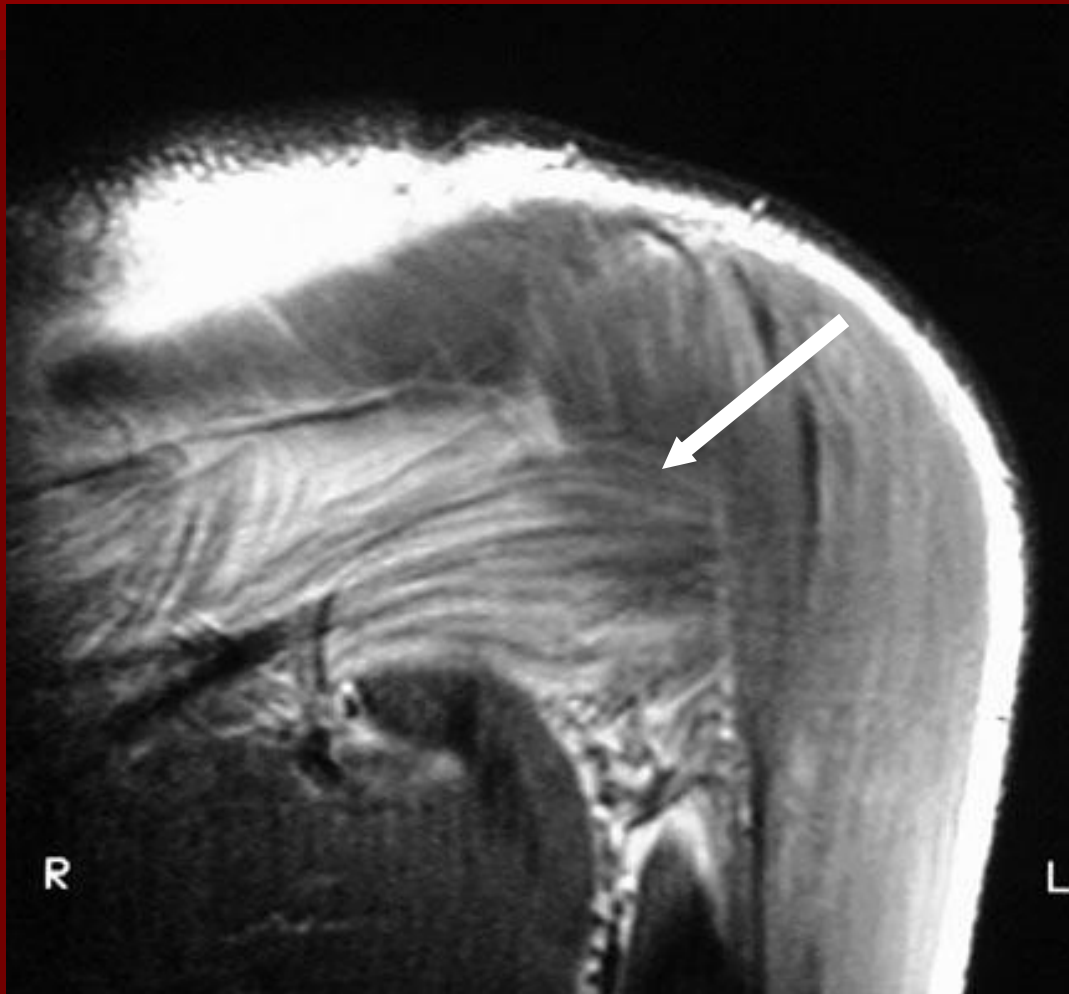
Suprascapular Notch



Spinoglenoid ganglion with associated posterior labral tear.



With Atrophy



Spinoglenoid notch ganglion cyst

