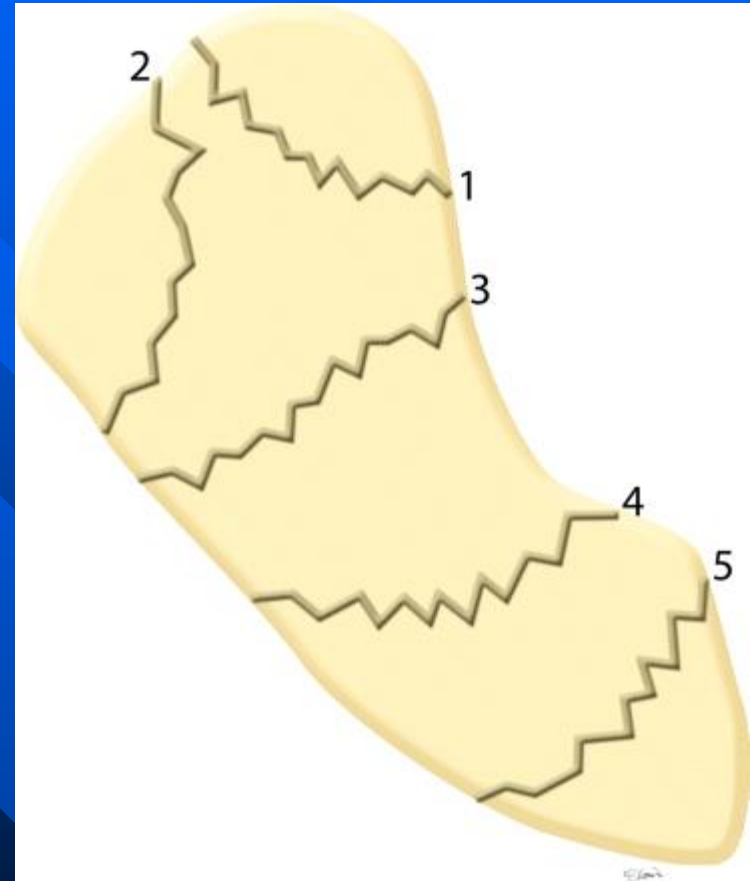
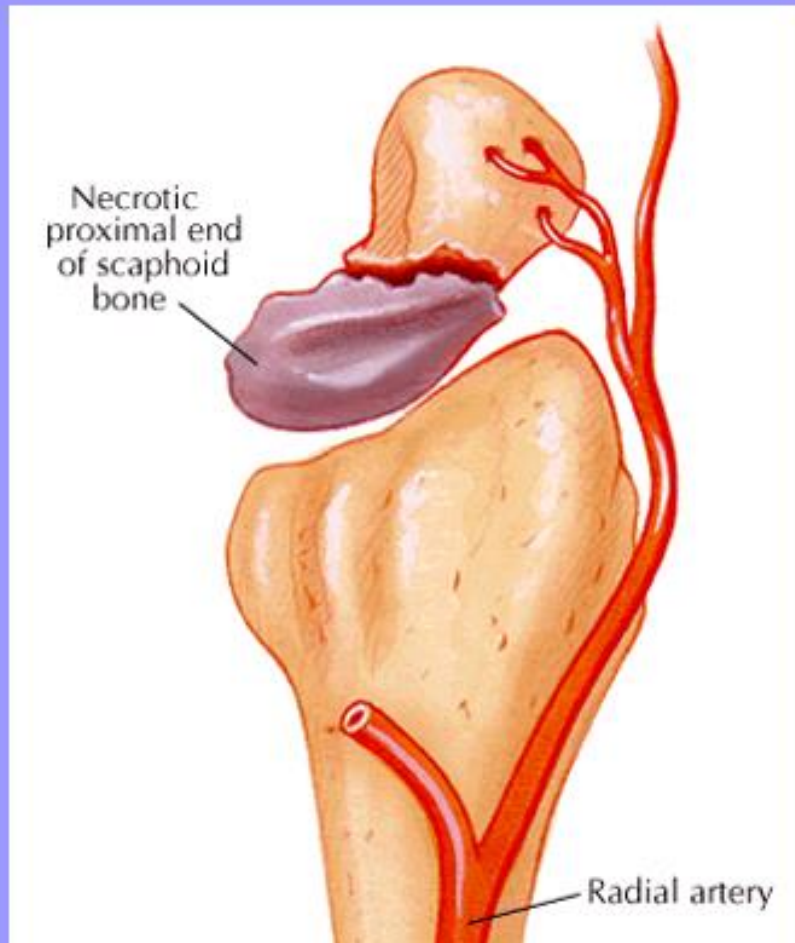


# Classification of scaphoid fractures

- 1 = distal articular surface
- 2 = tuberosity
- 3 = distal third,
- 4 = waist or middle third
- 5 = proximal pole.



# Scaphoid Fracture



70% are the waist  
90% waist and proximal pole  
10% will develop AVN

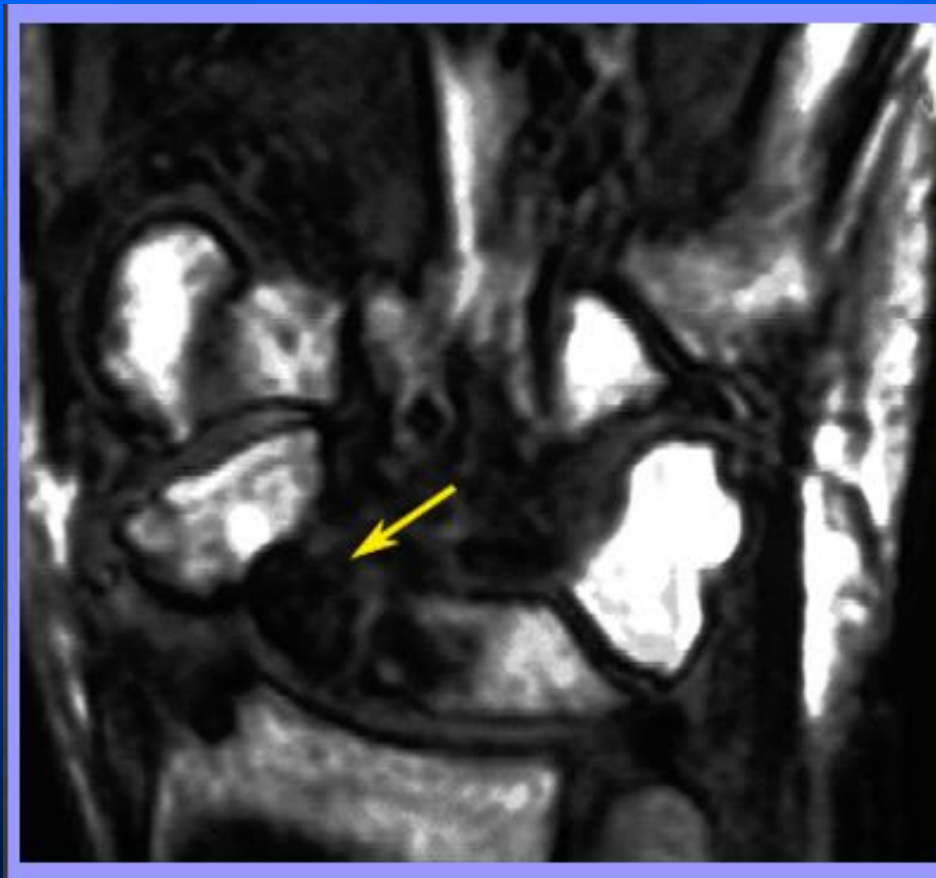
# Scaphoid Fracture



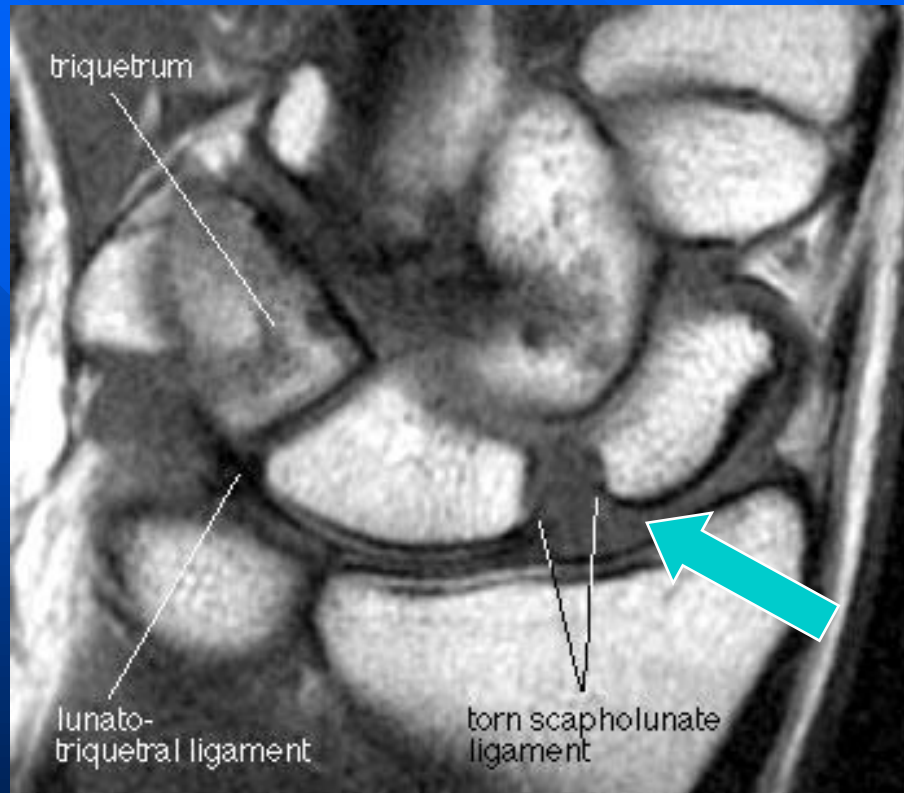
If non union, fix with  
herbert screw.

30-40% develop AVN  
Associated with DISI

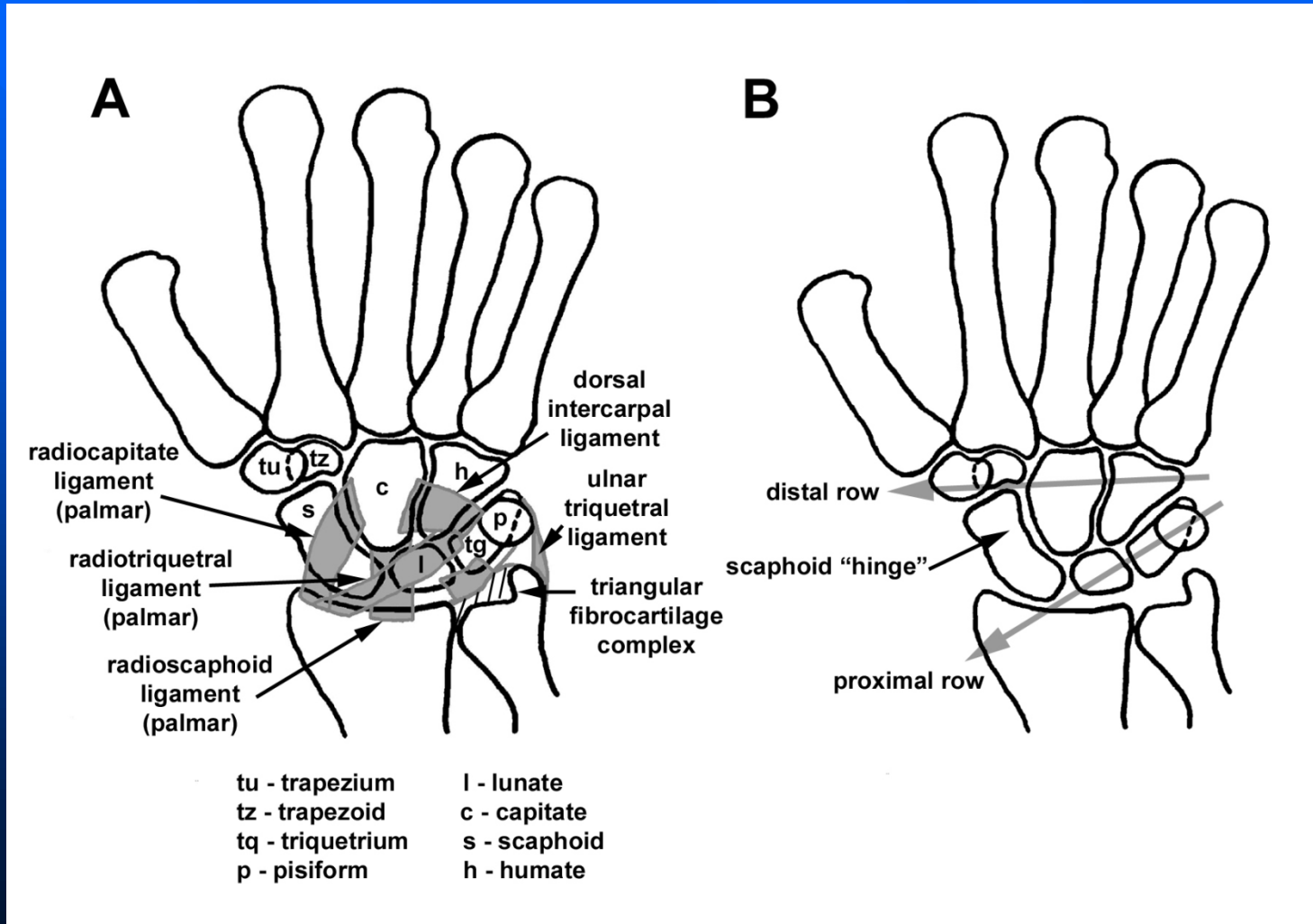
# AVN – LOW T1



# Torn scapholunate ligament with diastasis of scapholunate joint



# Anatomy of the carpus and palmar ligaments.



# Vascular Supply Scaphoid

