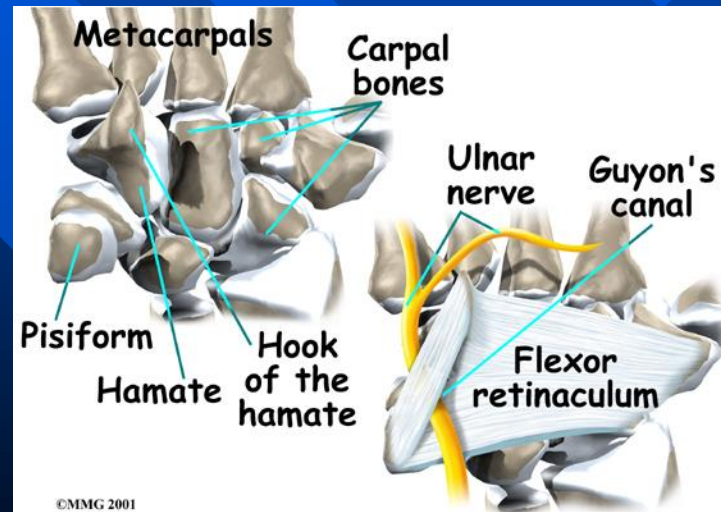
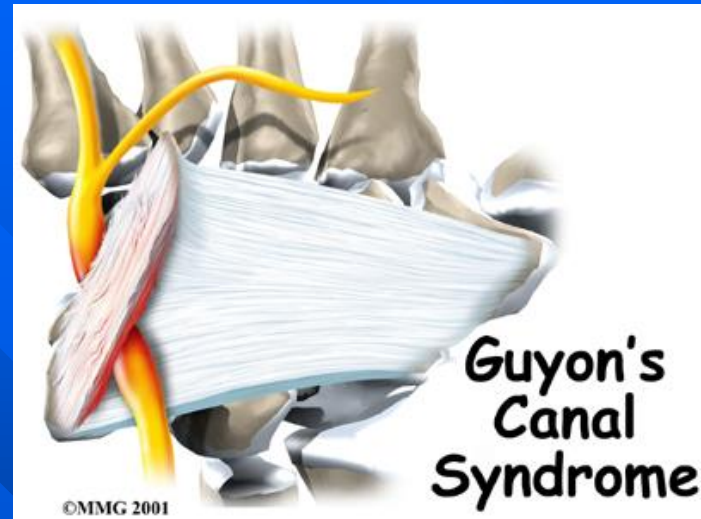


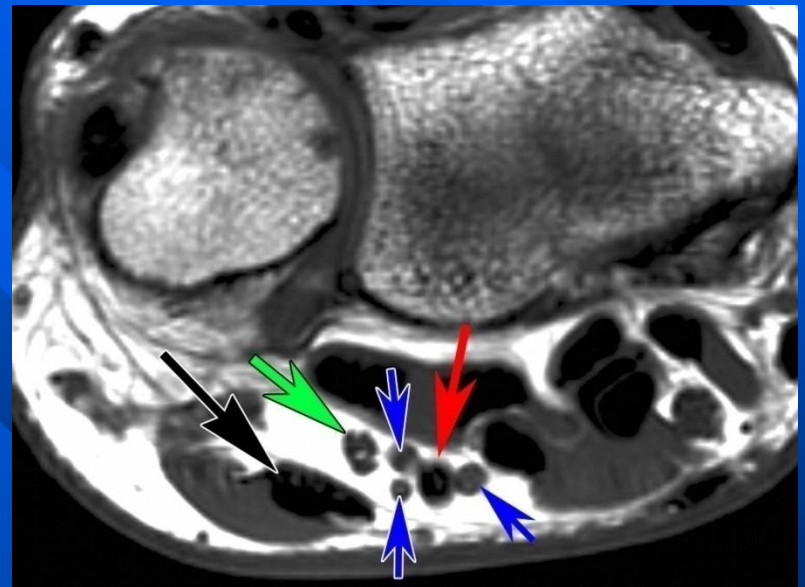
Guyon's Canal Syndrome

- Entrapment of the *ulnar nerve*
- Tunnel is formed by two bones (the *pisiform* and *hamate*)



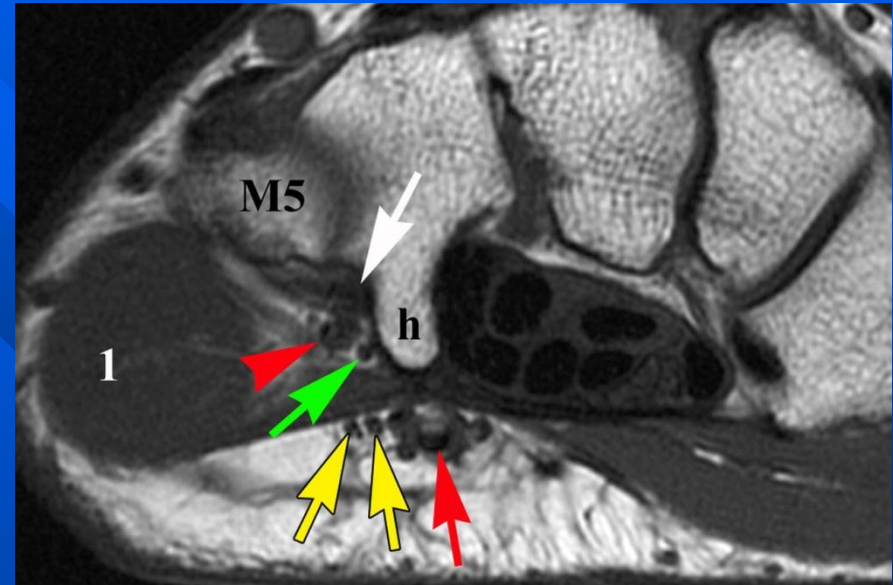
Inlet of the canal

- Ulnar nerve (green arrow)
- Flexor carpi ulnaris (black arrow)
- Ulnar veins (blue arrows)
- Ulnar artery - red arrow



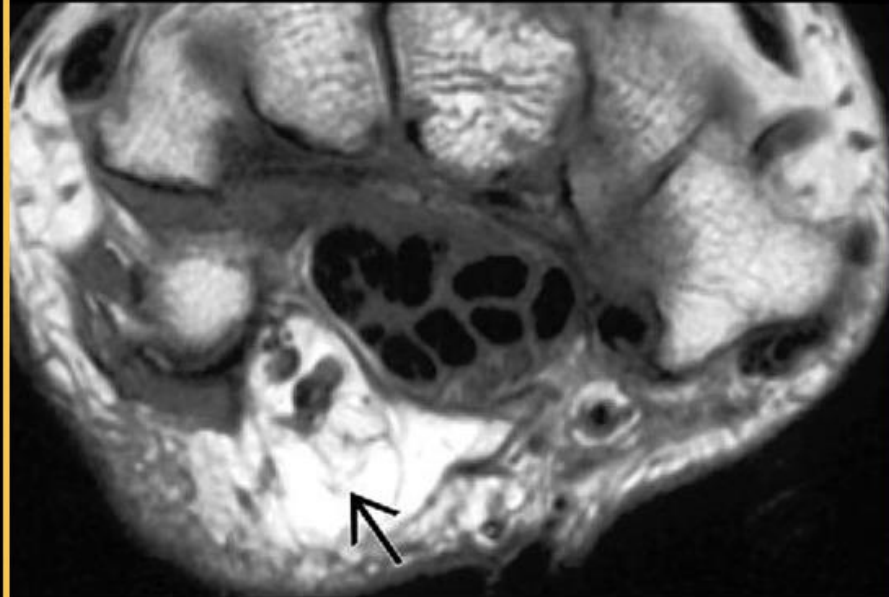
Guyon's Canal

- Ulnar nerve (green arrow)
- Ulnar artery - red arrow
- pisometacarpal ligament (white arrow)



Ulnar (Guyon's) Canal Syndrome

Diagnosis Images



Axial T1WI MR shows lipomatous mass (arrow) occupying the ulnar tunnel.