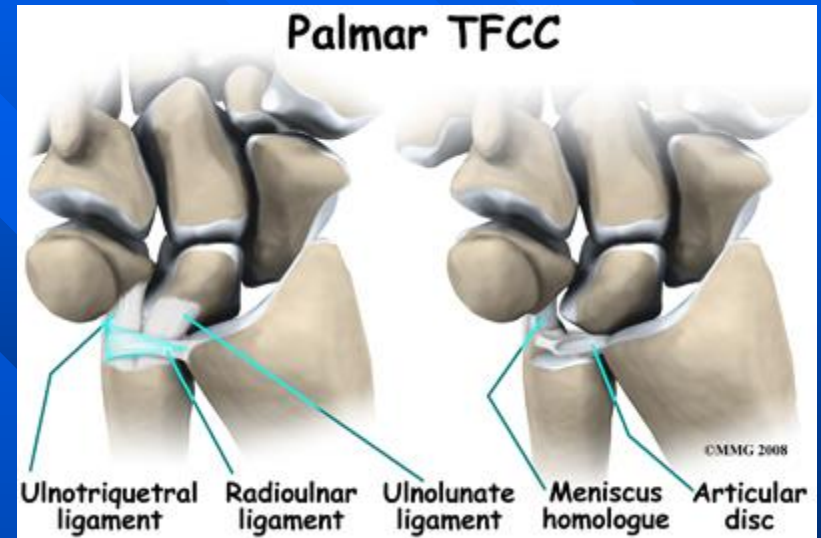
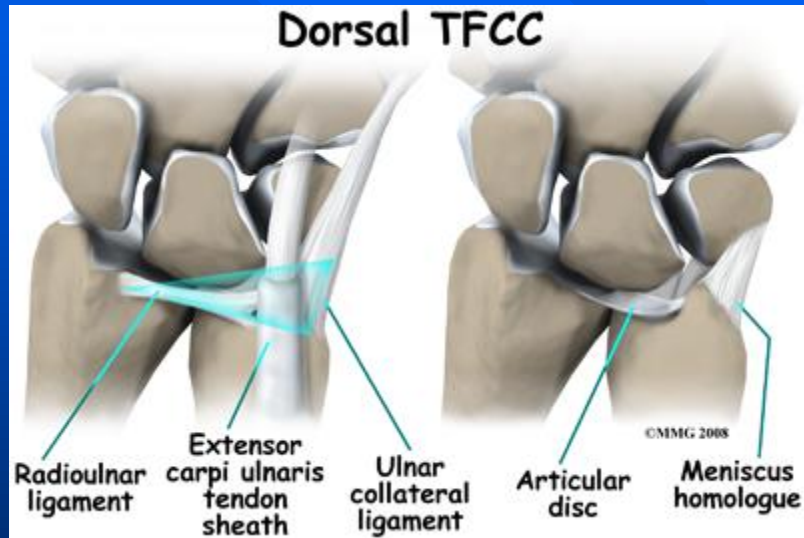


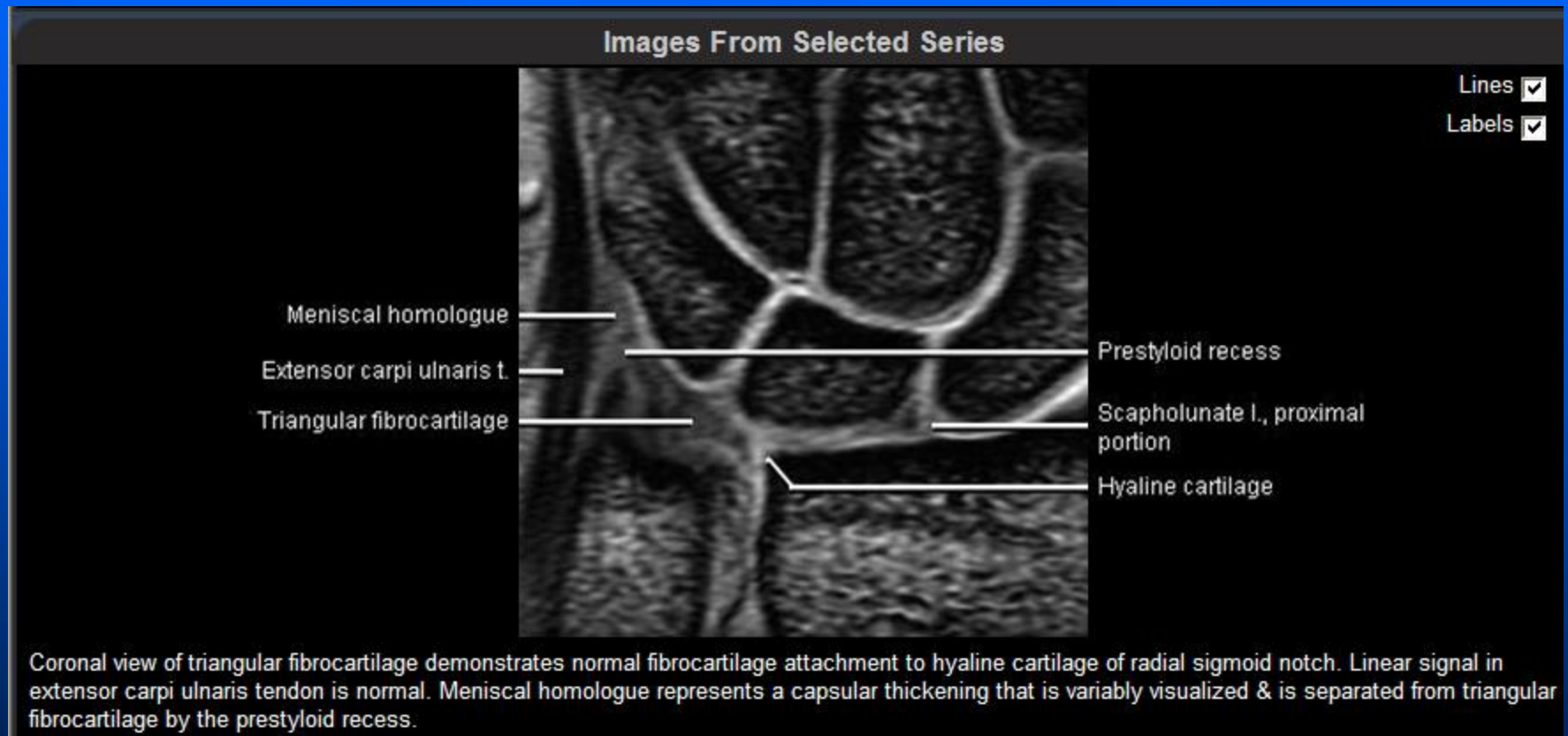
# Triangular fibrocartilage complex

- TFCC- sits between the ulna and two carpal bones (the lunate and the triquetrum)
  - Articular Disc (triangulyar fibrocartilage)
  - Meniscus homologue
  - Ulnocarpal ligament
  - Dorsal & Volar radioulnar ligament
  - ECU sheath
- <http://www.radsource.us/clinic/0507>

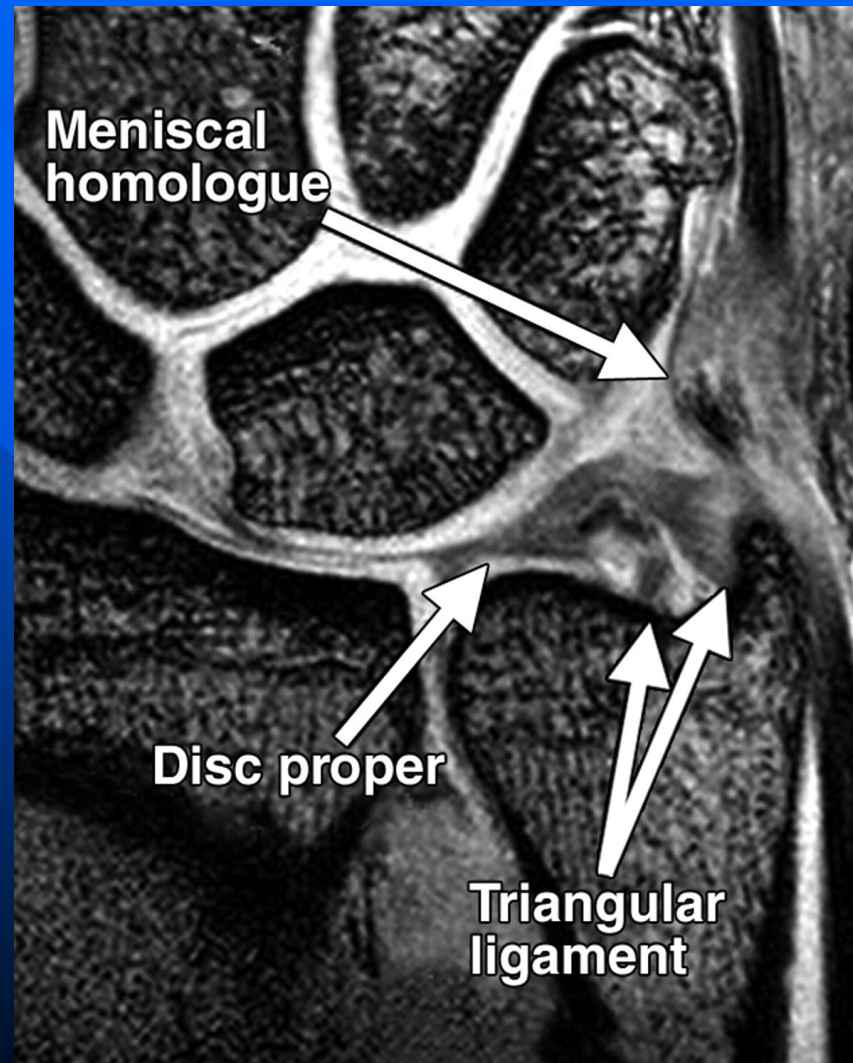
# Triangular fibrocartilage complex



# Triangular fibrocartilage complex

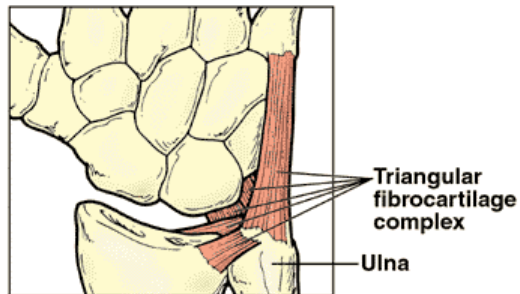
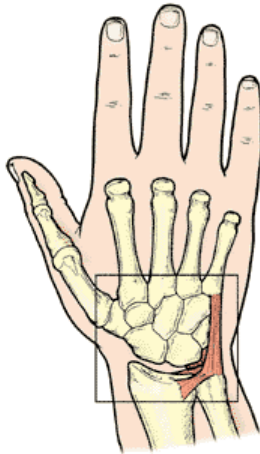


# Triangular fibrocartilage complex

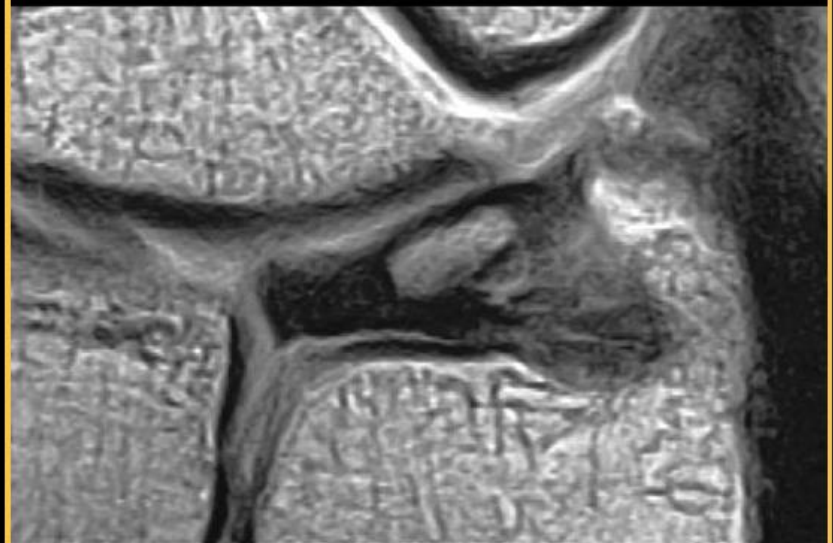


# Triangular fibrocartilage complex

## Triangular Fibrocartilage Complex (TFCC) Injuries



Copyright © 2002 McKesson Health Solutions LLC. All rights reserved



Coronal T1 C+ MR (MR arthrogram) shows normal foveal and styloid attachments of the TFC.



# Best diagnostic clue

- Direct extension of fluid across TFC
- Traumatic lesions - perforation or avulsion
- Degenerative lesions = spectrum of ulnocarpal abutment (impaction) syndrome
- Palmer class 1
  - Traumatic
- Palmer class 2
  - Degenerative (ulnocarpal abutment syndrome)

# Triangular fibrocartilage complex Tear

- Triangular fibrocartilage complex involves tears of the fibrocartilage articular disc and meniscal homologue.
- *Homologue* refers to the piece of tissue that connects the disc to the triquetrum bone

# Normal TFCC

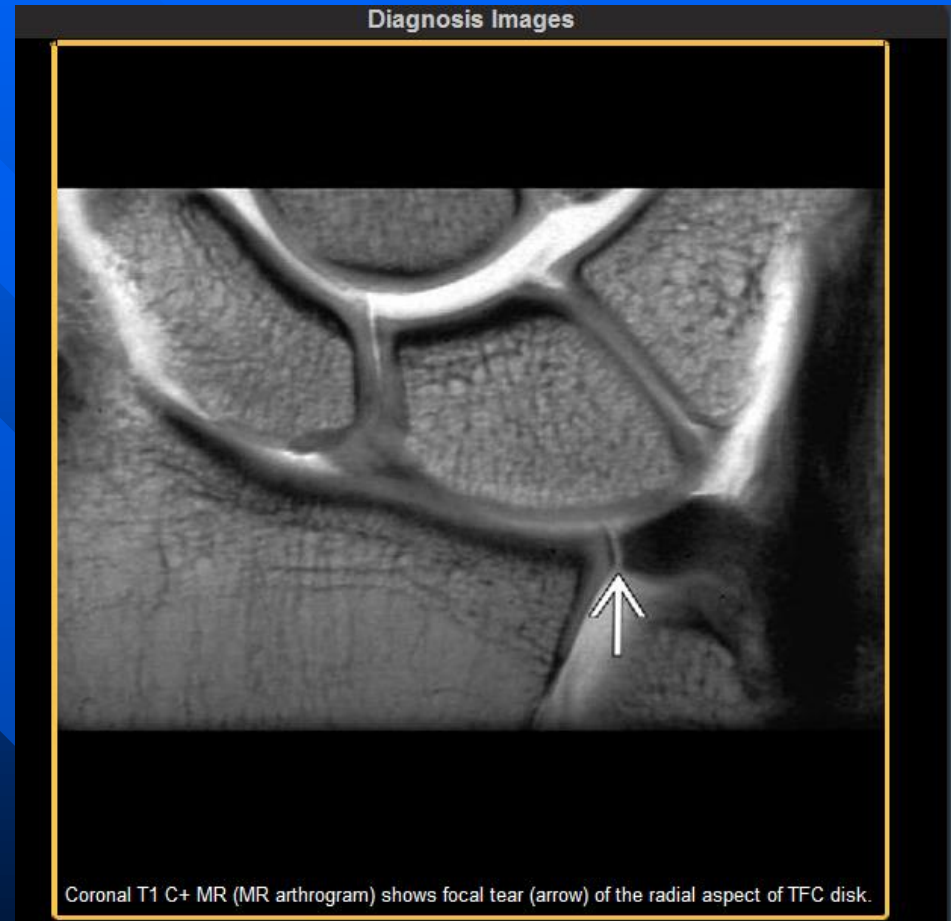
- Normal intermediate signal intensity is evident at the ulnar attachment (arrow).
- The normal interface with articular cartilage at the radial side is also apparent (arrowhead), and should not be mistaken for a vertical tear





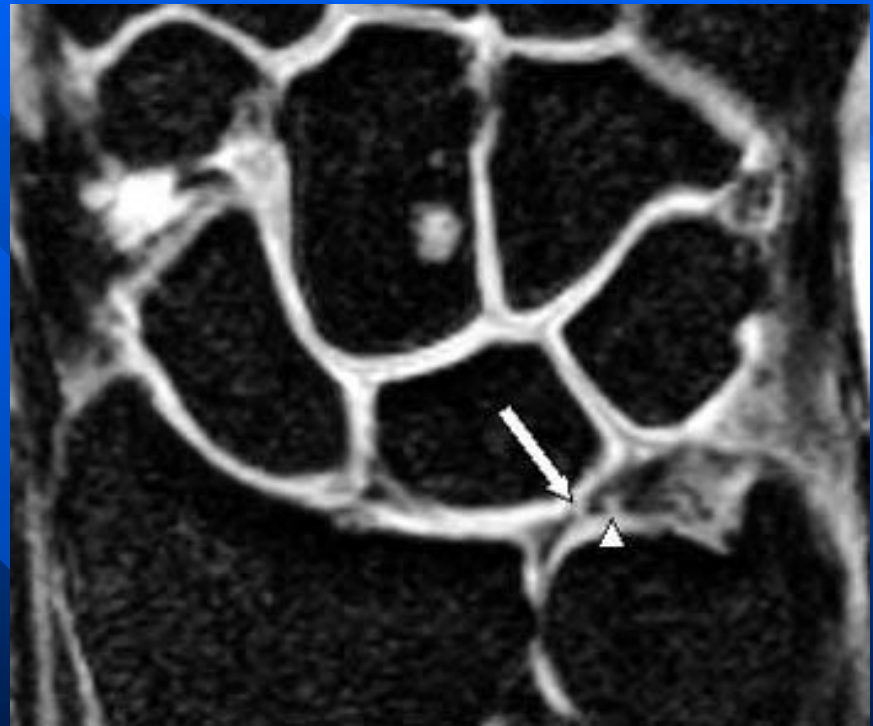
# TFCC - tear

- Most occur on the radial side



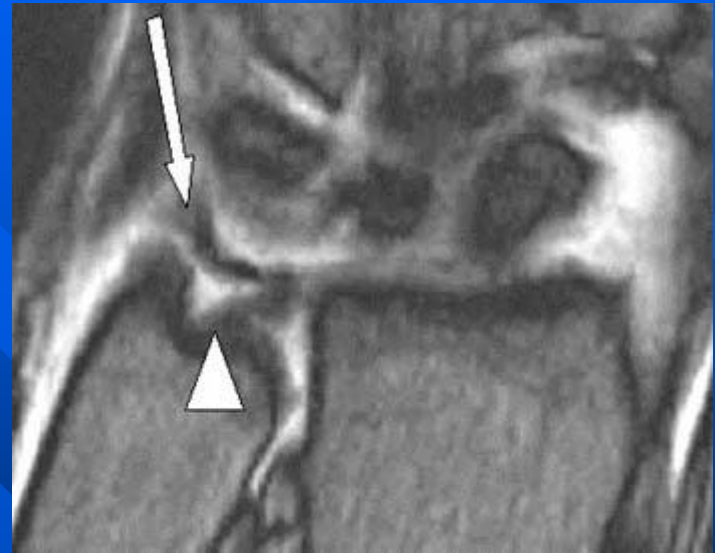
# TFCC - tear radial side

- Small central perforation (arrow)
- An additional, partial thickness undersurface tear (arrowhead) is also present at the articular disc



# *TFCC Avulsion*

- *Avulsion of the ulnar styloid attachment of the TFC (arrow).*
- *The foveal attachment (arrowhead) remains intact.*



# TFCC - tear

- Ulnar side tears difficult to diagnosis due to higher signal
- Vascular zone, can heal.
- Sensitivity higher for radial side.

