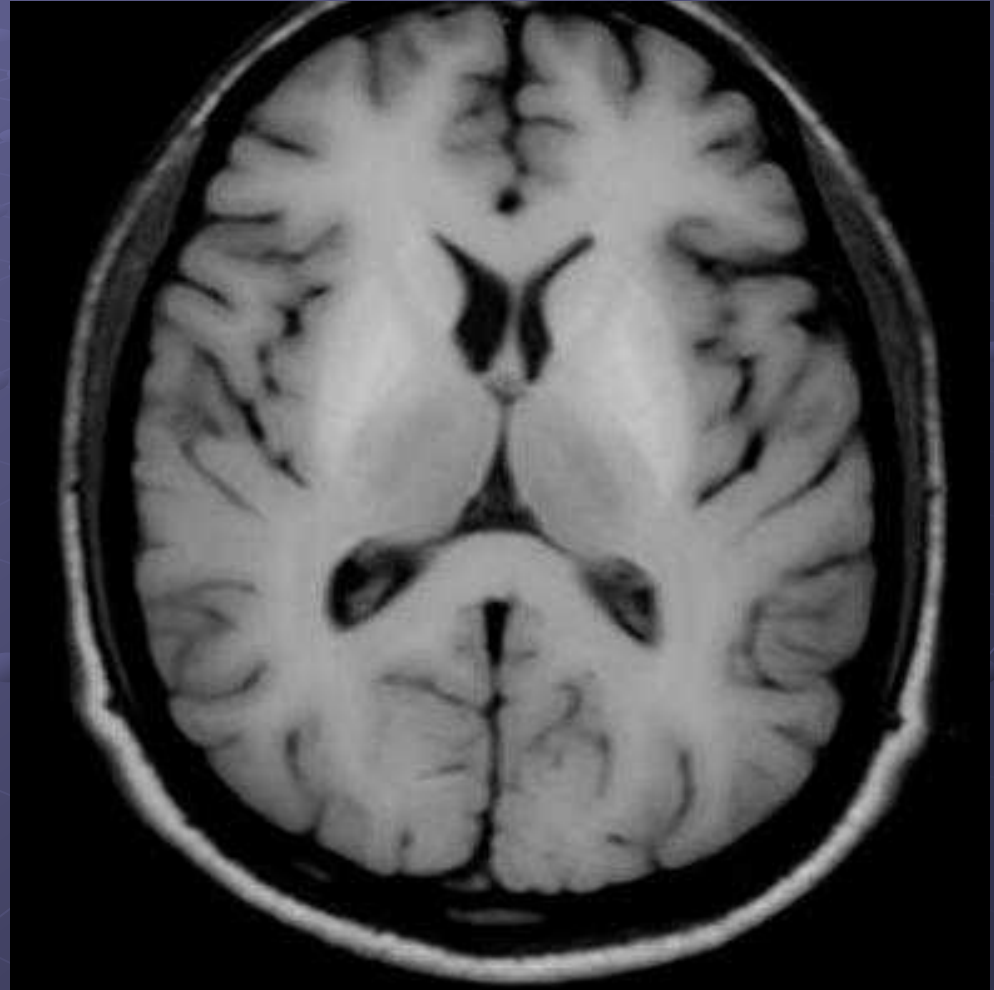
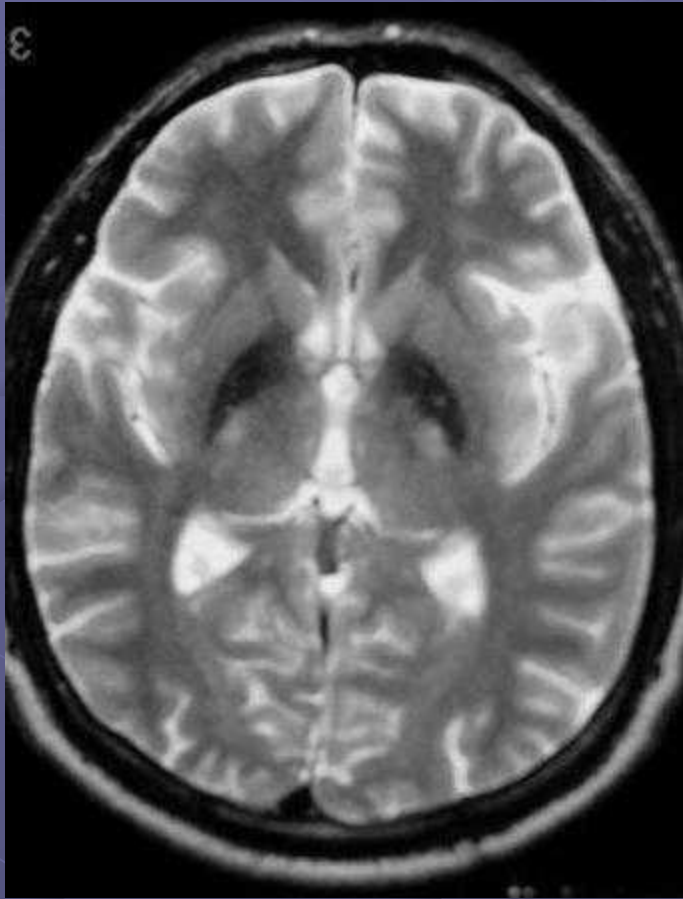
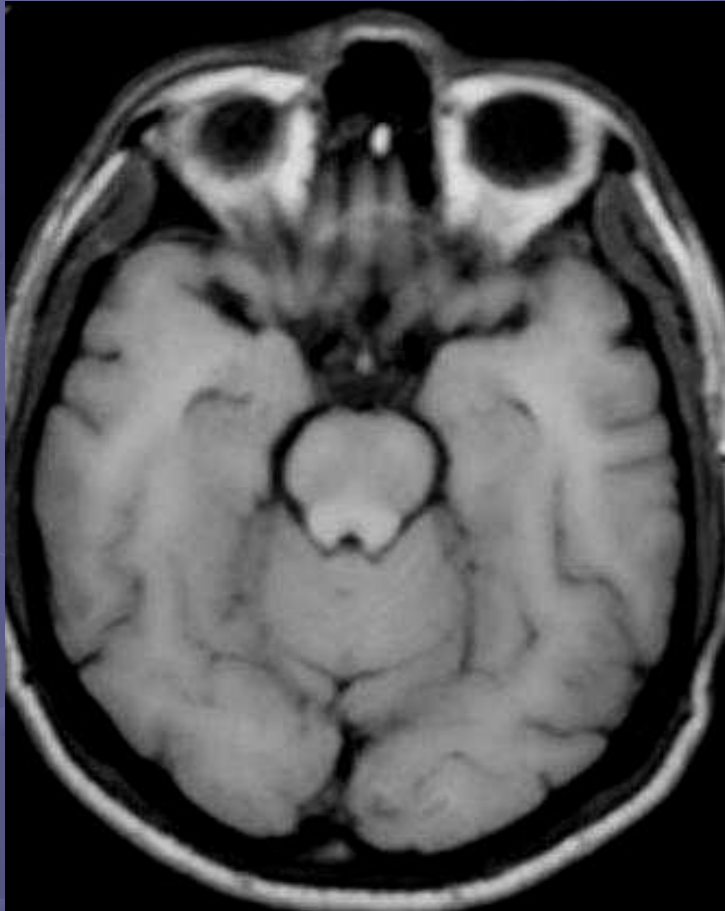


# *Acquired hepatocerebral degeneration*



T1- symmetrical diffuse hyperintense signal changes of the putamina, globus pallidi, kaput of caudate nuclei

# *Acquired hepatocerebral degeneration*



rare nonhereditary irreversible neurologic syndrome that occurs in patients with chronic liver disease

Hyperintense signal changes on T1 weighted, and hypointense or no signal changes on T2 weighted sequences have been reported in the basal ganglia, subthalamic area, quadrigeminal plate, cerebral peduncles, internal capsules, anterior pituitary gland.

Clearly delineated hyperintense signal changes of the quadrigeminal plate.