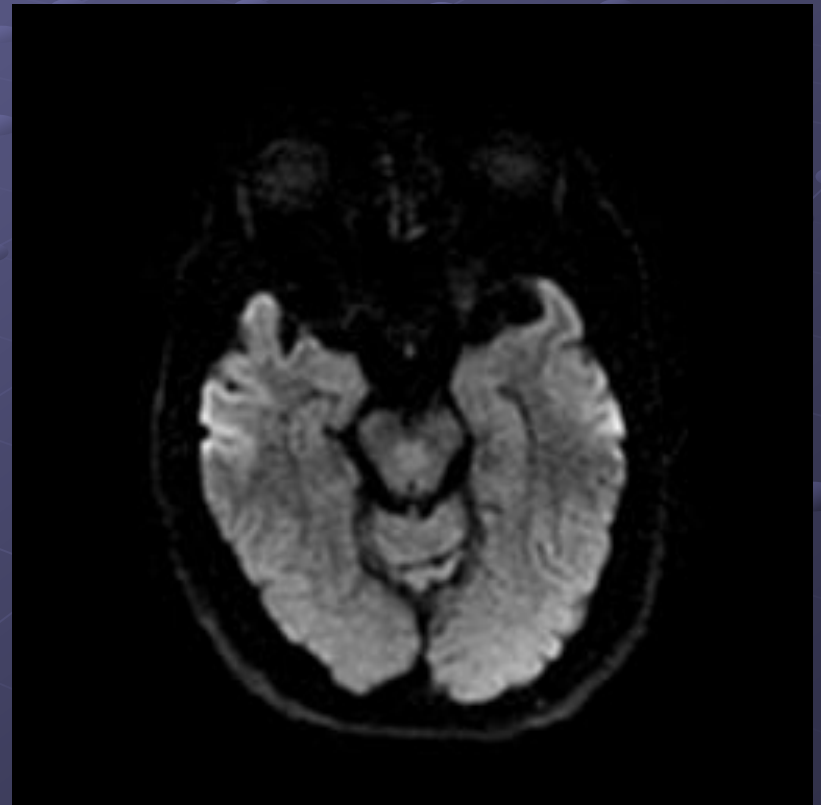


Decussation of superior cerebellar peduncles

- Stroke or demyelinating disease did not fit clinically.
- Given the added clinically information, it was felt to be a normal finding.



Decussation of superior cerebellar peduncles

- Superior cerebellar peduncle crosses at caudal **midbrain (inferior colliculus)** levels,
- After which most of the fibers ascend to the **red nucleus** (rostral midbrain) and dorsal thalamus

