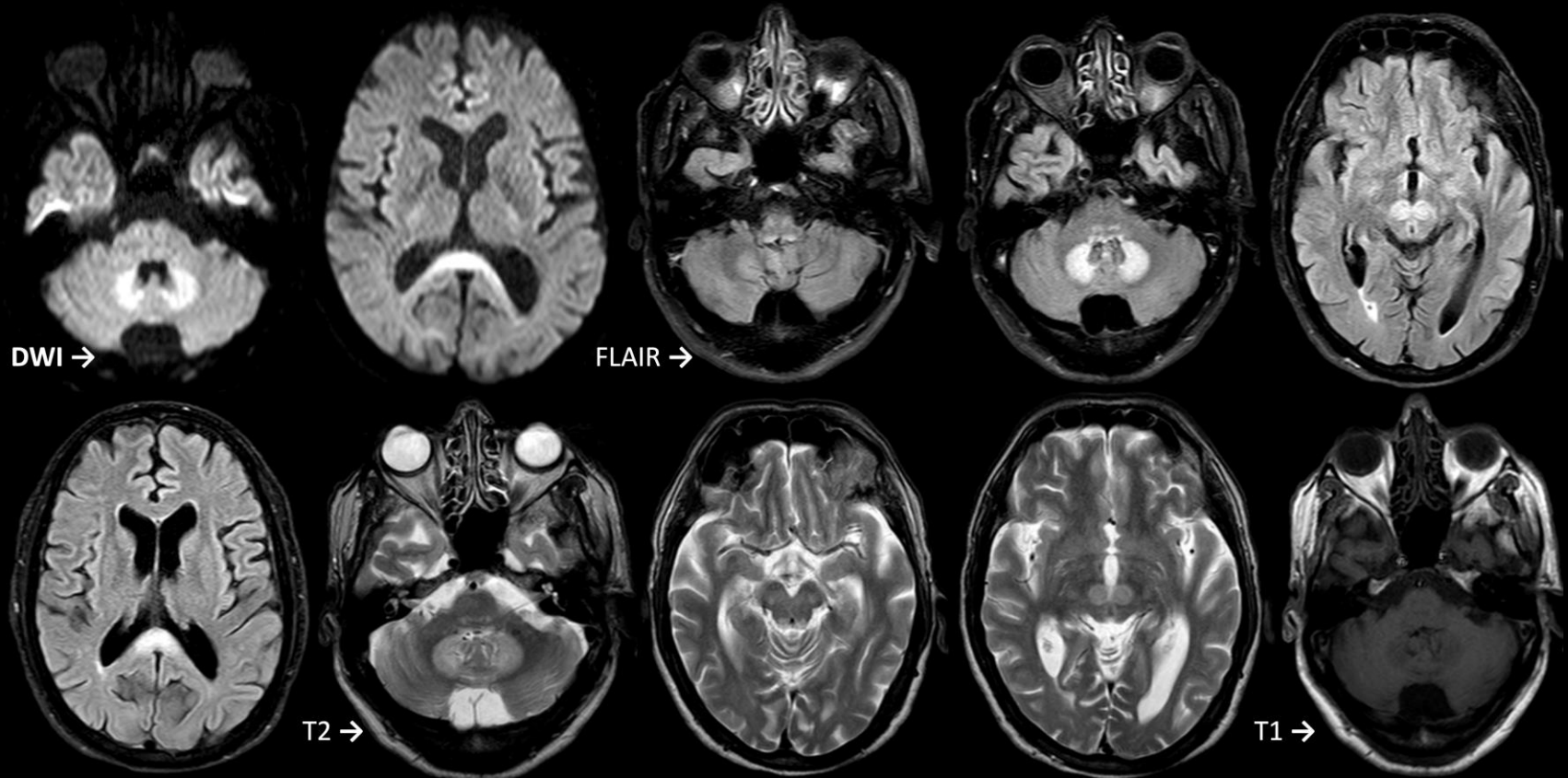


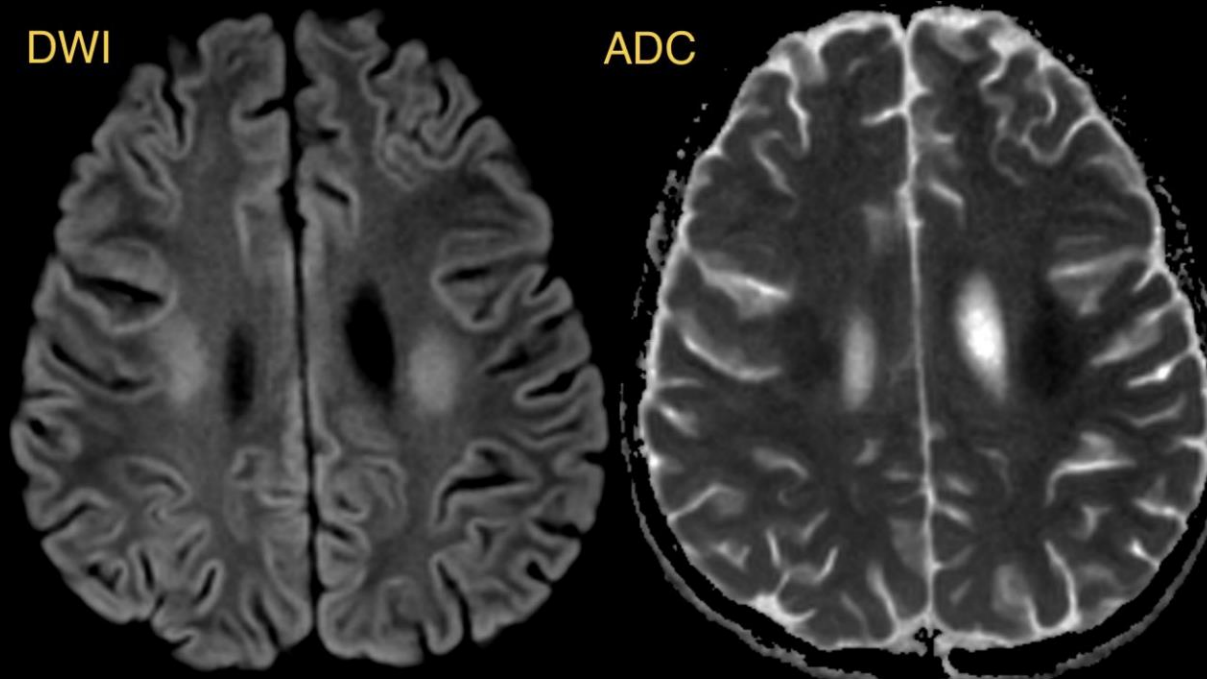
Metronidazole Encephalopathy



Metronidazole encephalopathy

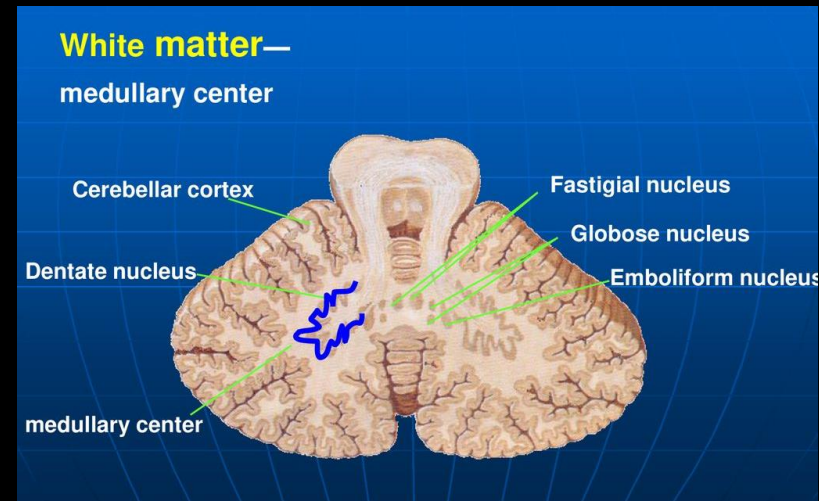
- Relatively rare central nervous system disorder, associated with prolonged duration and high cumulative doses of metronidazole.
- Metronidazole is commonly used to treat a wide variety of infection-associated diseases
- Characteristic MRI finding in patients with metronidazole-induced encephalopathy is bilateral involvement of the cerebellar dentate nuclei.
- However, this is also seen in other neurologic disorders such as **Wernicke encephalopathy** and **isoniazid or methyl bromide toxicity**.

Restricted diffusion Centrum semiovale can be early sign



Dentate nucleus

- Largest deep cerebellar cluster of neurons; it has a dentated – serrated – edge.
- Efferent fibers of the dentate nucleus are involved in the modulation of motor neurons and neurons involved in conscious thought and visuospatial function.
- Disruption of the dentate nucleus is typically associated with cerebellar ataxia.



*Structure of the Human Brain:
A Photographic Atlas.*
Stephen DeArmand et al., 1976

