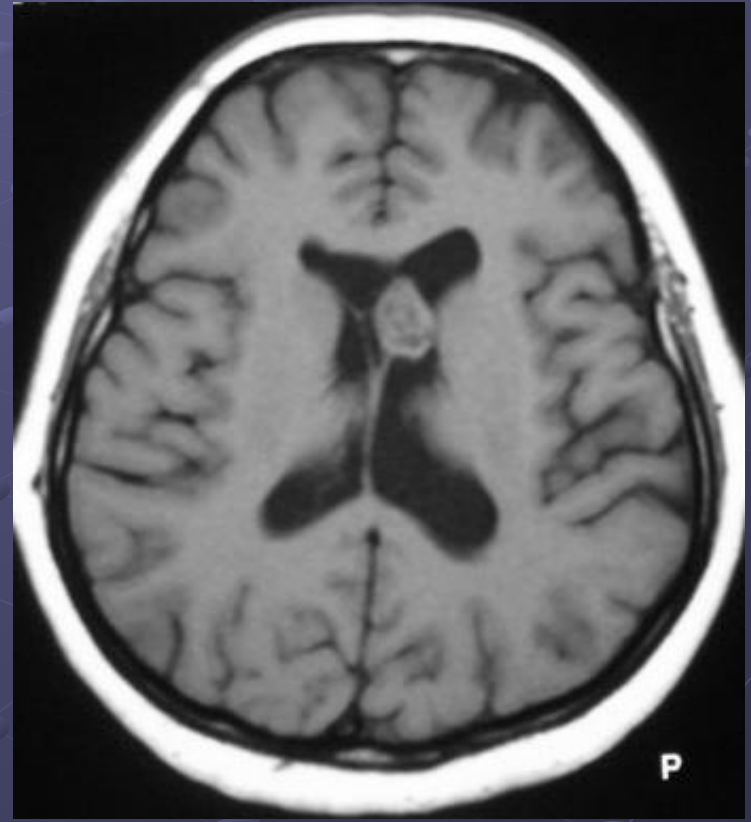
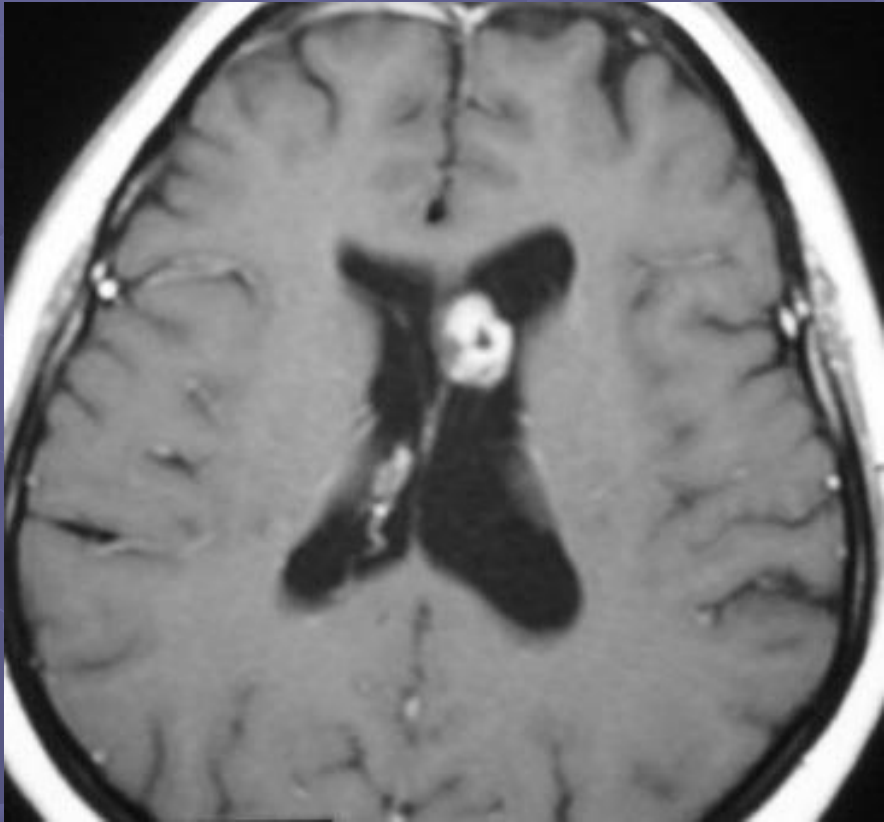


# Central neurocytoma



# Central neurocytoma

- 20-40' s
- Typically heterogeneous tumors which contain multiple cysts and calcifications,
- DDX:
  - **Oligodendroglioma** (containing no hemorrhage, differentiation via histopathological study),
  - **Astrocytoma** (mostly intraaxial lesions, may invade septum pellucidum rather than attachment),
  - **Meningioma** (almost exclusively located in trigone in contradistinction to the corpus of lateral ventricle for central neurocytoma),
  - **Ependymoma** (located in fourth ventricle and trigone, prefer younger ages, relatively homogeneous masses).
  - Mets