

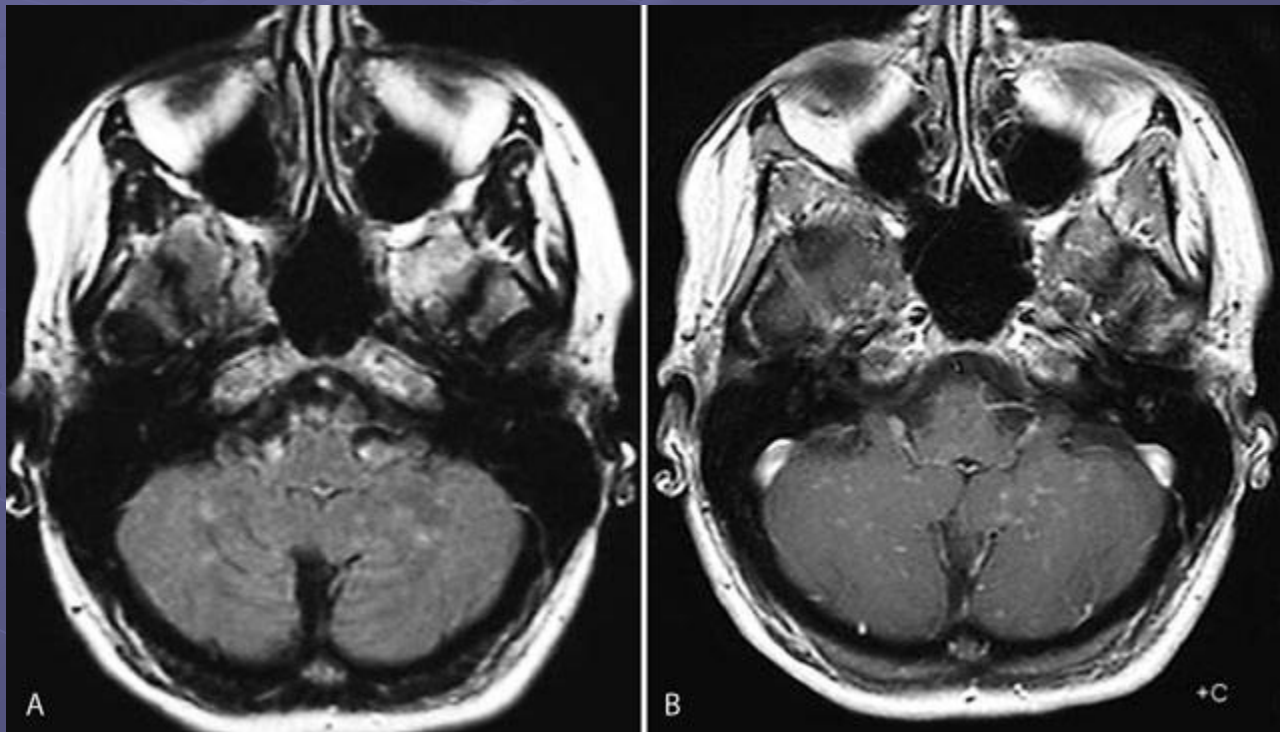
Clippers Syndrome

- **Chronic Lymphocytic Inflammation with Pontine Perivascular Enhancement Responsive to Steroids**
- It is a rare, inflammatory disorder of the central nervous system,
- Primarily affecting the brainstem—especially the pons—and
- Sometimes extending to adjacent structures such as the cerebellum, medulla, midbrain, and even the spinal cord or cerebral white matter
- Reported in patients aged 13–86, with a mean onset in the 40s–50s.
- Both genders are affected, with a slight male preponderance

MRI

- Characteristic punctate or curvilinear gadolinium enhancement, described as "peppering" the pons and adjacent hindbrain structures.
- Lesions are small, may coalesce, and typically decrease in density with distance from the pons.
- Lesions may also be present in the cerebellum, medulla, midbrain, spinal cord, basal ganglia, or cerebral white matter





A1



A2

