

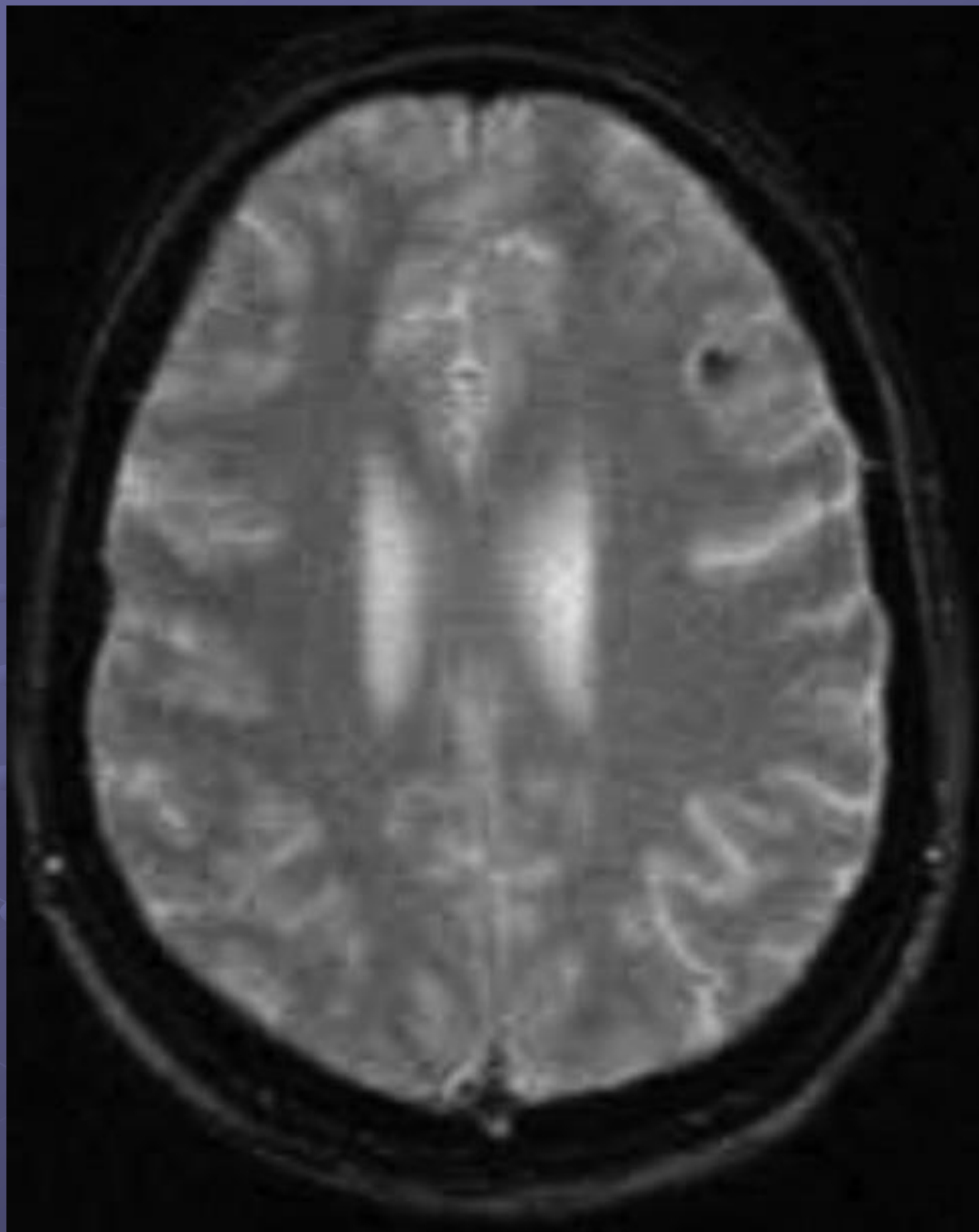
DNET

● Terminology

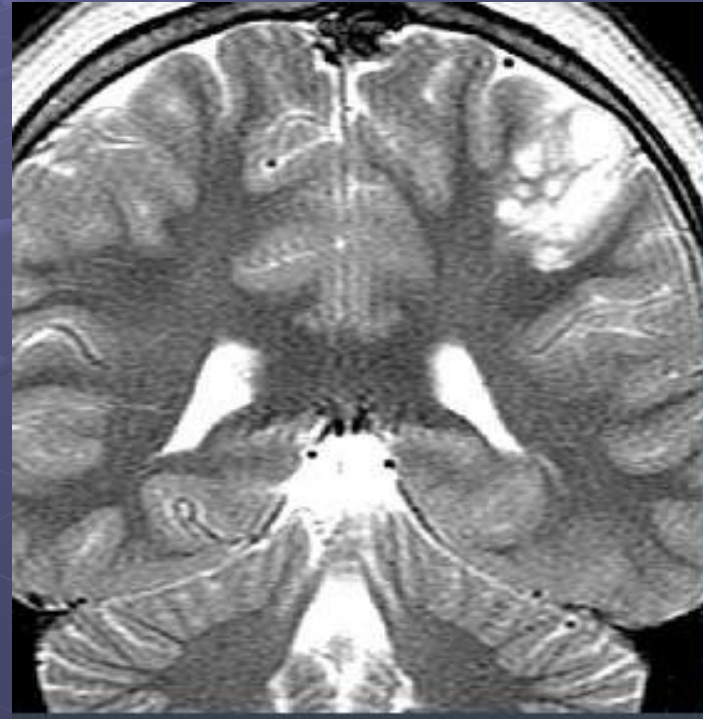
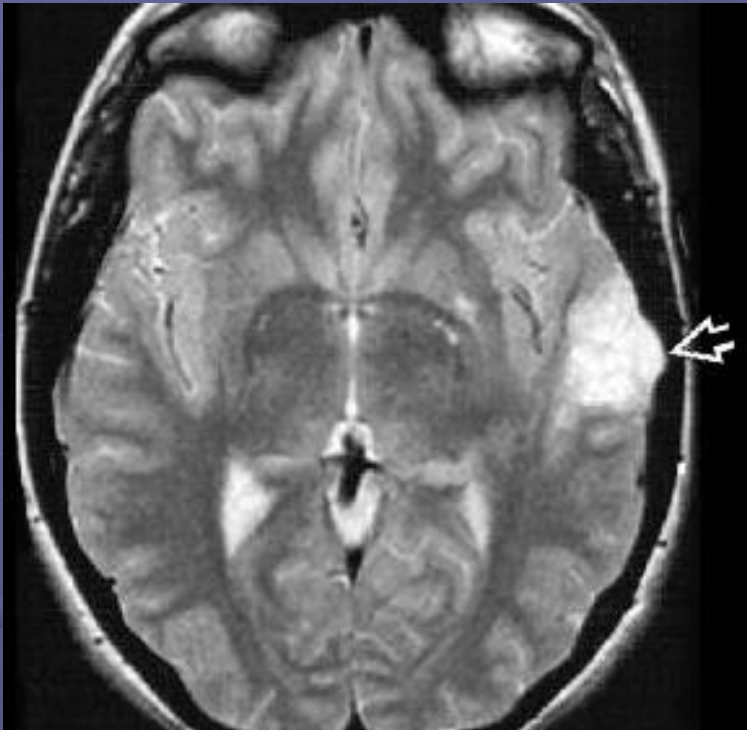
- Dysembryoplastic neuroepithelial tumor (DNET)
- Benign, focal, intracortical mass superimposed on background of cortical dysplasia

● Imaging Findings

- Best diagnostic clue: Well-demarcated, wedge-shaped "bubbly" intracortical mass in young patient with longstanding partial seizures
- Temporal lobe (often amygdala/hippocampus) most common site
- Intracortical mass scallops inner table of skull and "points" towards ventricle
- Minimal or no mass effect
- Usually doesn't enhance
- Faint focal punctate or ring-enhancement in 20%

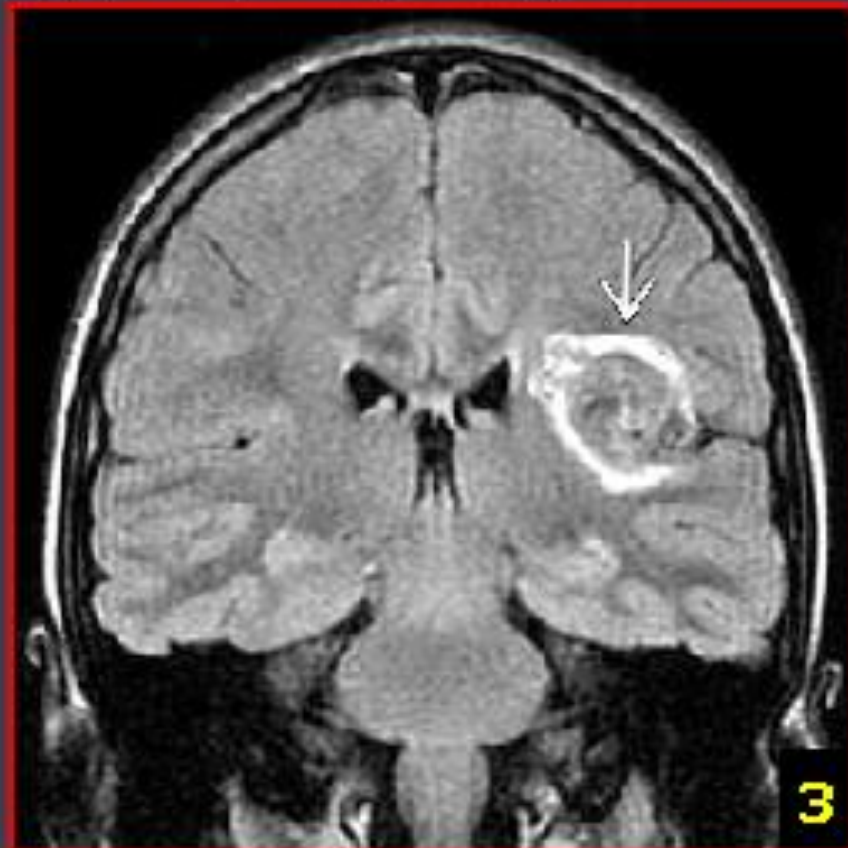


DNET

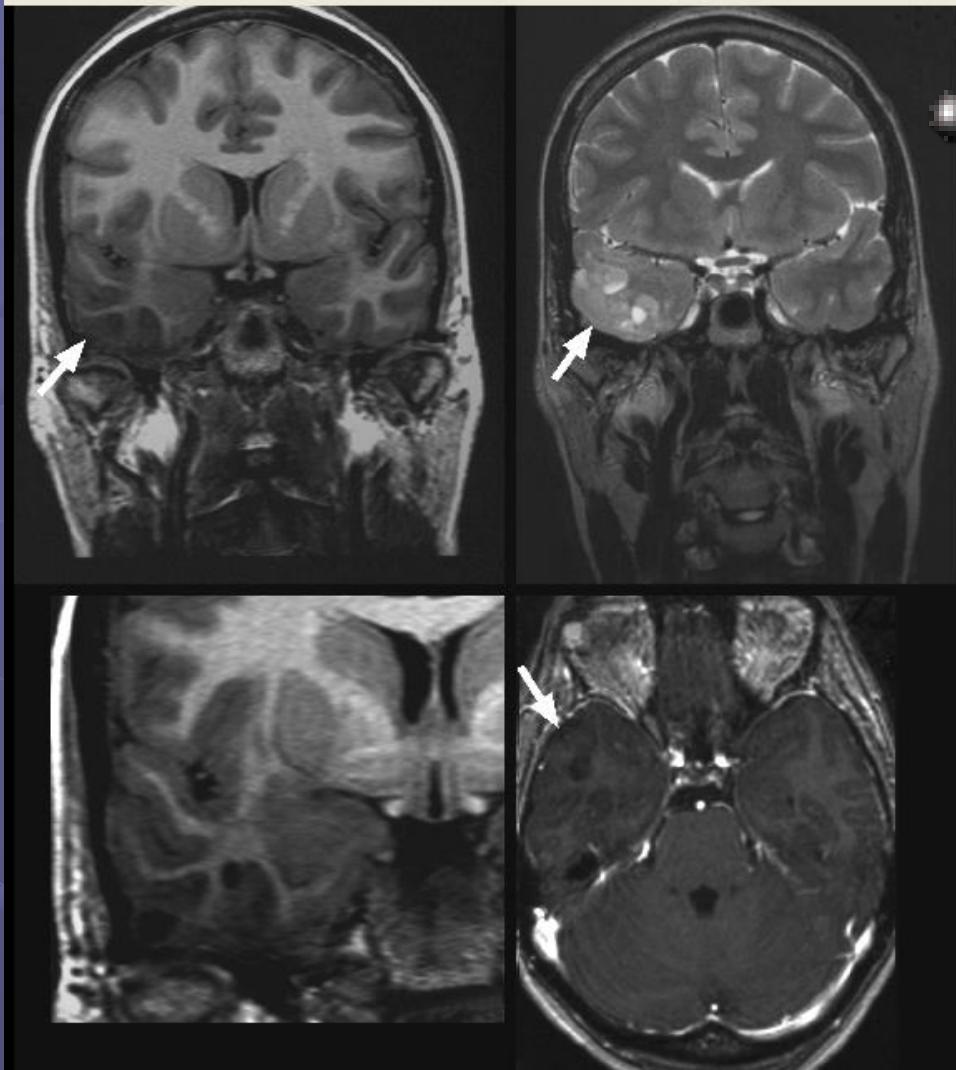


DENT

Typical, MR, Ring on FLAIR



Dysembryoplastic neuroepithelial tumor



DDX:

- Ganglioglioma
- low grade astrocytoma
- oligodendroglioma

DIFFERENTIAL DIAGNOSIS

● **Taylor dysplasia**

- Single tuberous sclerosis lesion
- Expands single gyrus
- Looks like tuber
- Nonenhancing

● **Neuroepithelial cyst**

- Nonenhancing single or complex cystic structure
- No bright "rim" on FLAIR

● **Ganglioglioma**

- Ca++ common
- Cyst
- Strong enhancement

● **Pleomorphic xanthoastrocytoma (PXA)**

- Enhancing nodule abuts pia
- Look for dural "tail"