

# Epidermoid Cyst

Definition = Ectodermal Inclusion Cyst

● Location – 90% intradural, primarily basal cisterns

- CPA = 40-50%
- fourth ventricle = 17%
- parasellar/middle cranial fossa = 10-15%
- cerebral hemispheres = rare (<1.5%)

# Epidermoid Cyst

## MRI

### ● T1W

- $\approx 75\%$  slightly hyperintense to CSF
- uncommonly hyperintense to brain ( “white epidermoid” ) due to high triglycerides and unsaturated Fats
- uncommonly hypointense ( “black epidermoid” )

# Epidermoid Cyst

## MRI

### ● T2W

- isointense (65%) to slightly hyperintense (35%) to CSF
- very rarely hypointense due to calcification, viscous secretions, iron pigments etc.

### ● FLAIR – usually doesn't completely null

# Epidermoid Cyst

## MRI

### ● T1 C+

- usually none although margin of cyst may show minimal enhancement ( $\approx 35\%$ )
- with malignant degeneration changes into enhancing tumor

# Epidermoid Cyst

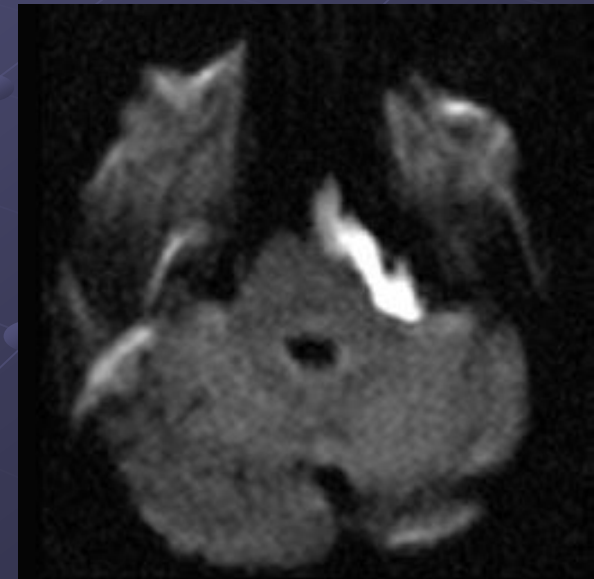
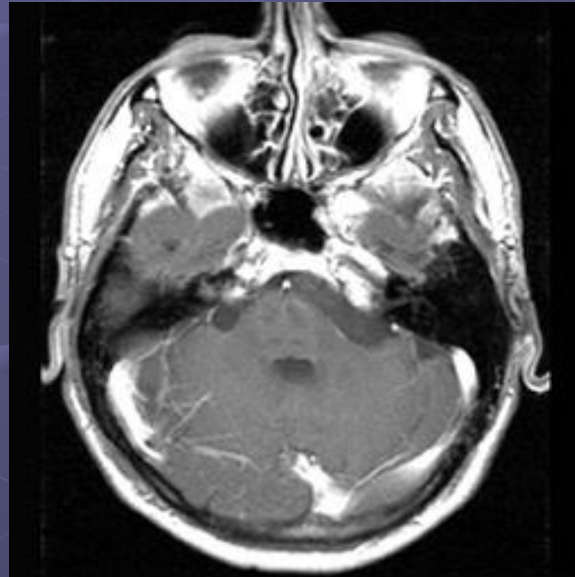
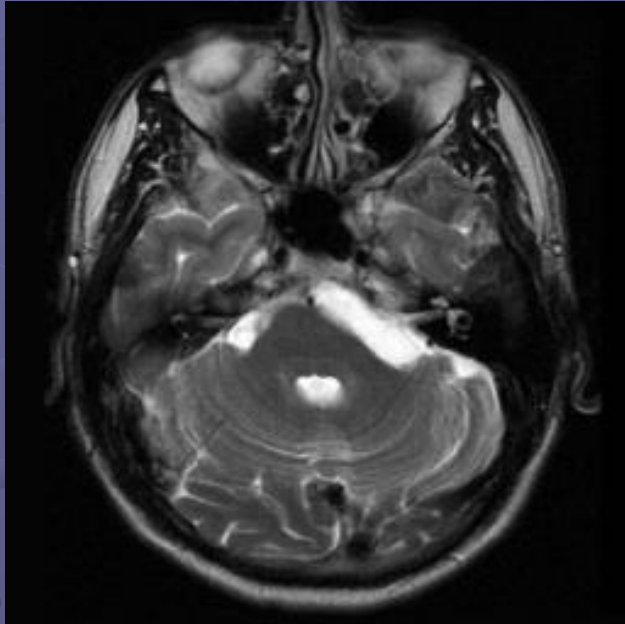
## MRI

### ● DWI

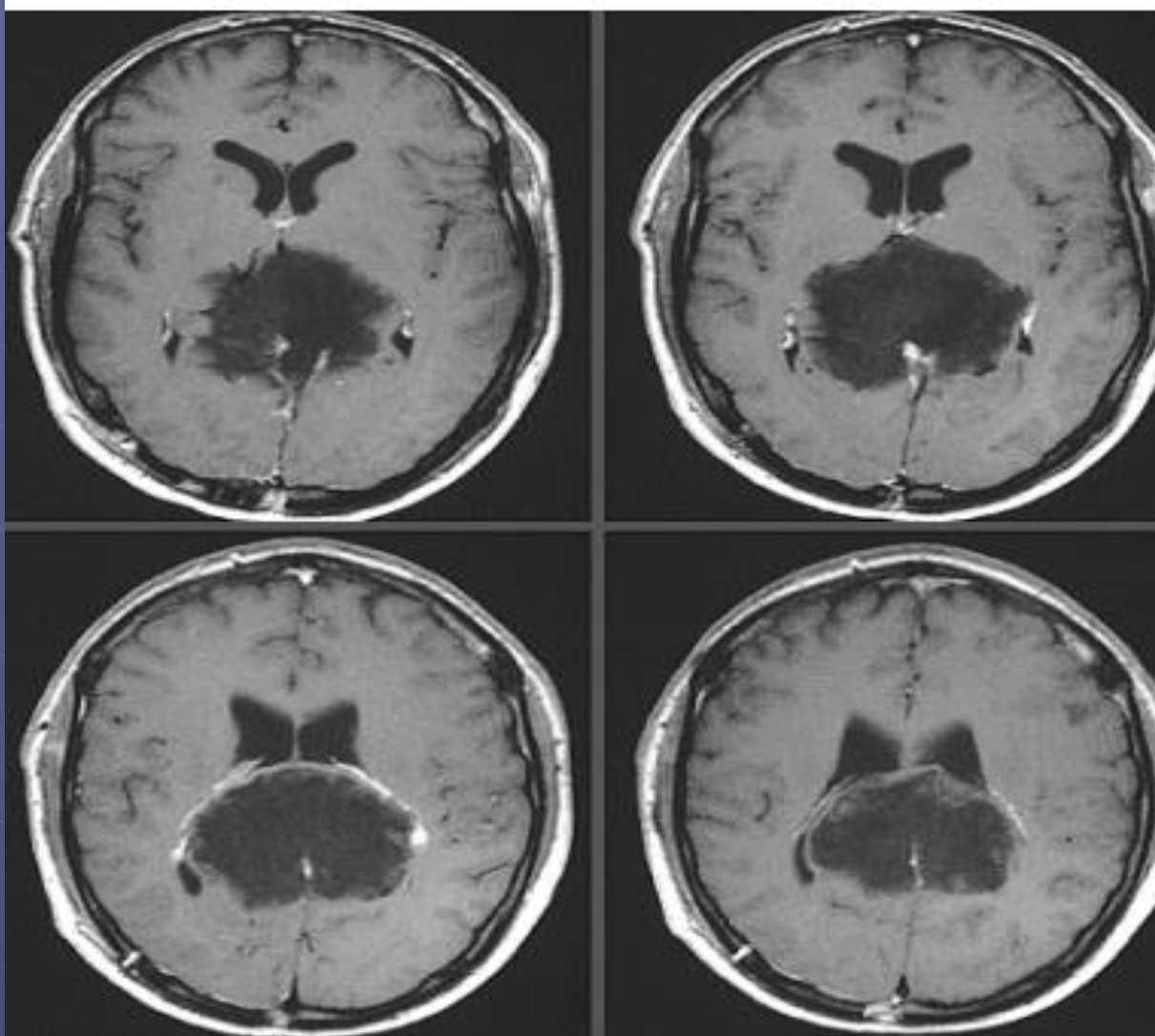
- restricted diffusion yields high signal
- ADC = brain parenchyma



# Epidermoid tumor



# Epidermoid tumor (quadrigeminal cistern)



# Epidermoid Cyst

