

Hemangiopericytoma

- sarcoma related to neoplastic transformation of pericytes (contractile elements surrounding capillaries)
- may occur in any region of the body where capillaries are found
 - most commonly involves STs of lower extremities, pelvis and RP
 - approx 15% in H&N region

Hemangiopericytoma

Imaging

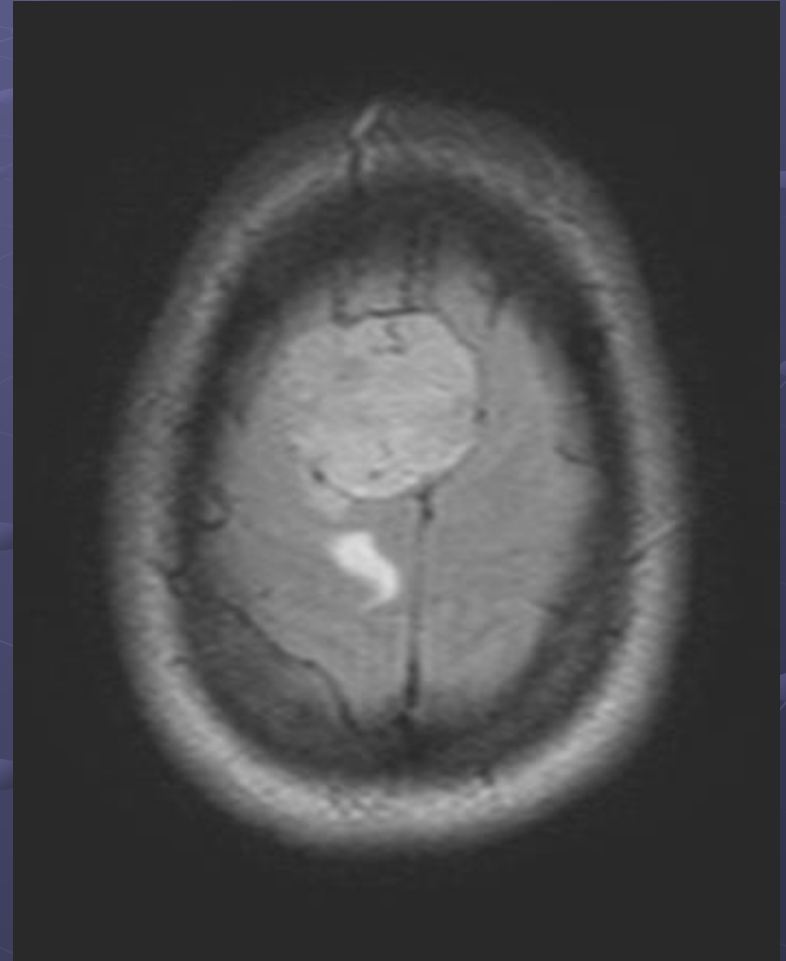
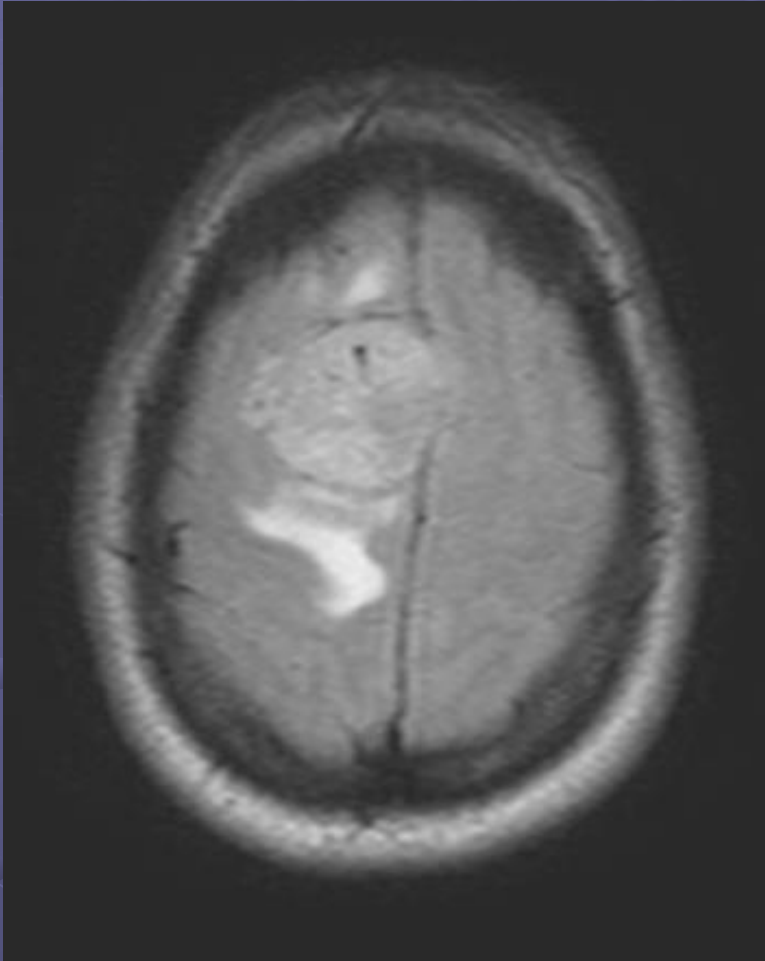
- lobular enhancing extra-axial mass with dural attachment, +/- skull erosion
- may mimic meningioma but without Ca^{++} or hyperostosis
- dural tail in approx 50%
- prominent flow voids on T2W MRI

Hemangiopericytoma

Teaching Point

- when a “meningioma” has atypical features (frank bone erosion, multiple flow voids) think HPC!

Hemangiopericytoma



Hemangiopericytoma

