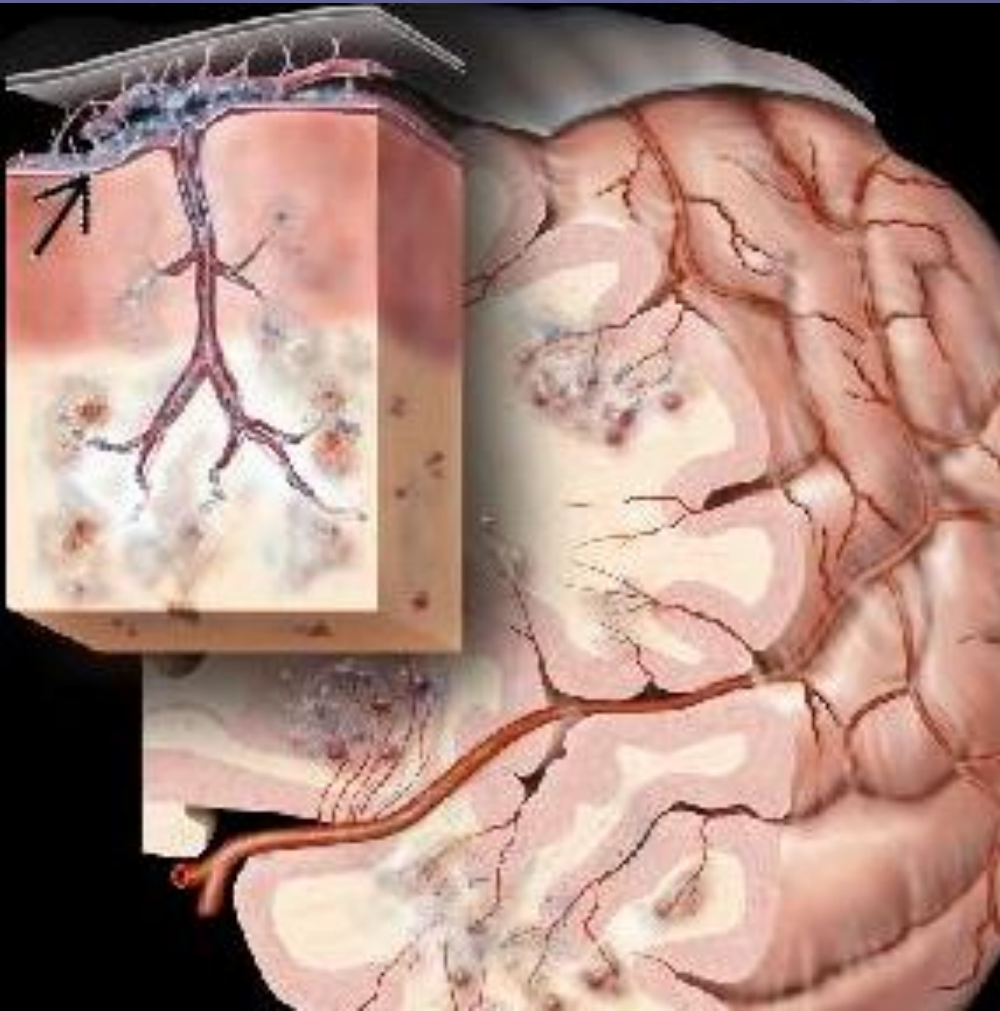
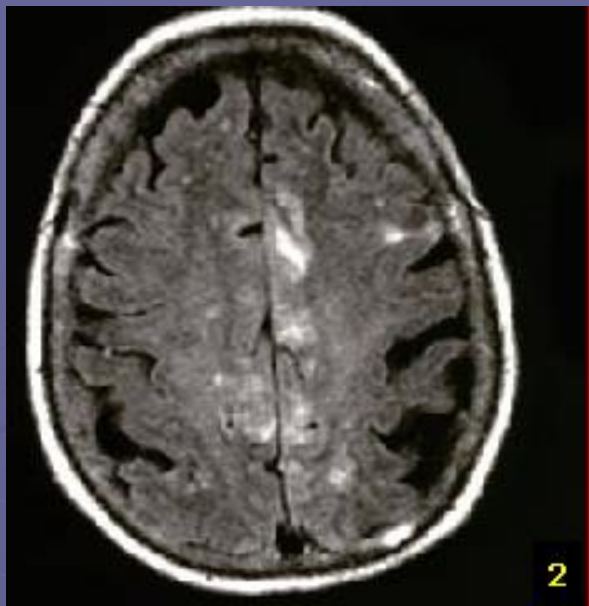


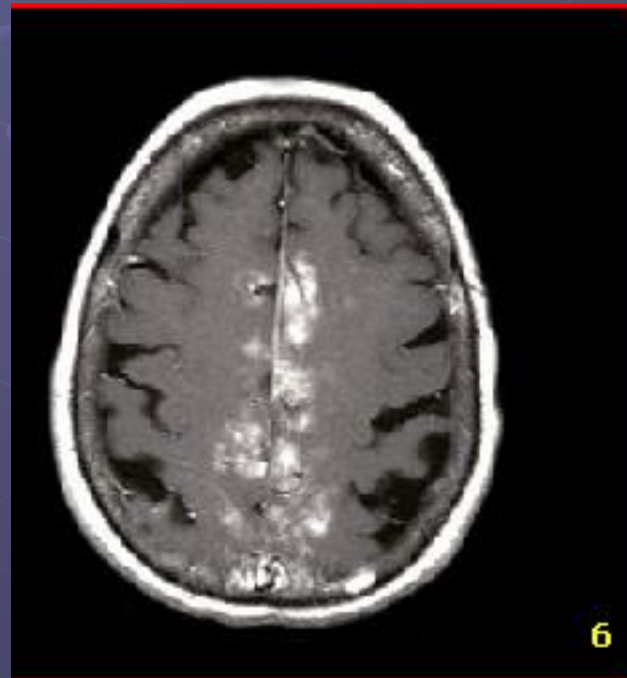
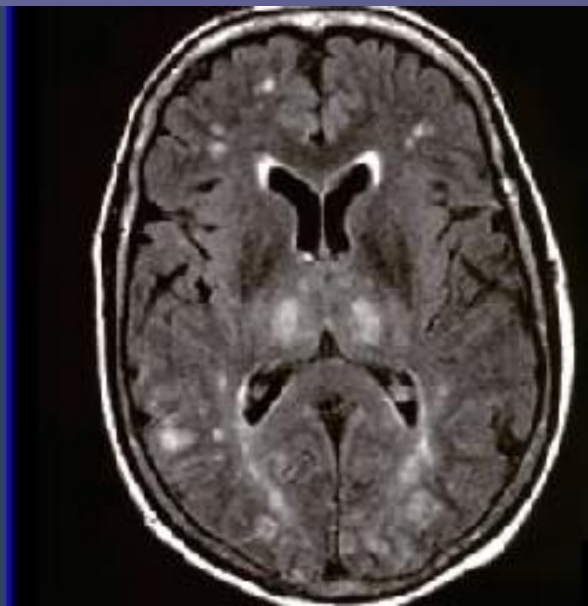
Intravascular (angiocentric) lymphoma



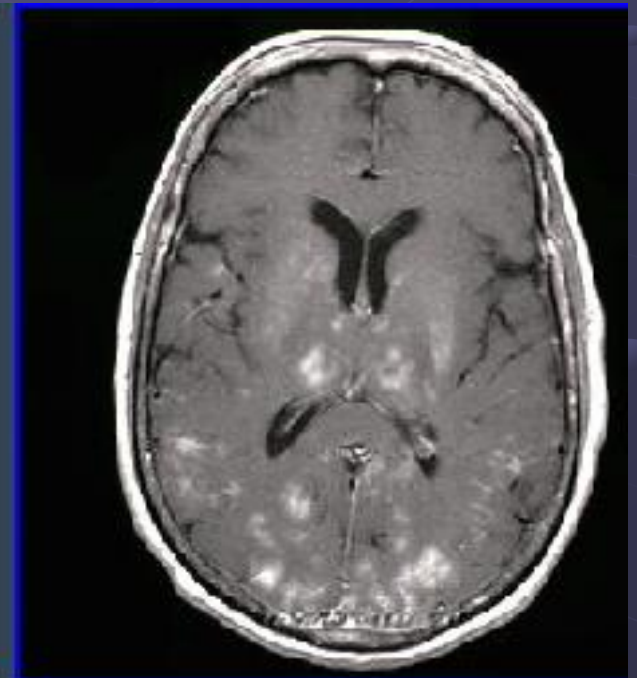
- DDX:
- Vasculitis
- Vascular dementia
- Primary CNS lymphoma (PCNSL)
- Neurosarcoidosis



2



6



Intravascular (angiocentric) lymphoma

- Rare malignancy characterized by intravascular proliferation of lymphoid cells with a predilection for CNS and skin
- Best diagnostic clue
 - Multifocal abnormal T2 hyperintensity in deep WM, cortex or basal ganglia + enhancement
 - Enhancement variable: Linear, patchy, nodular (tree and bud”), gyriform, homogeneous, meningeal
- Imaging of IVL is nonspecific, but should be considered in patients with dementia, multifocal lesions and enhancement