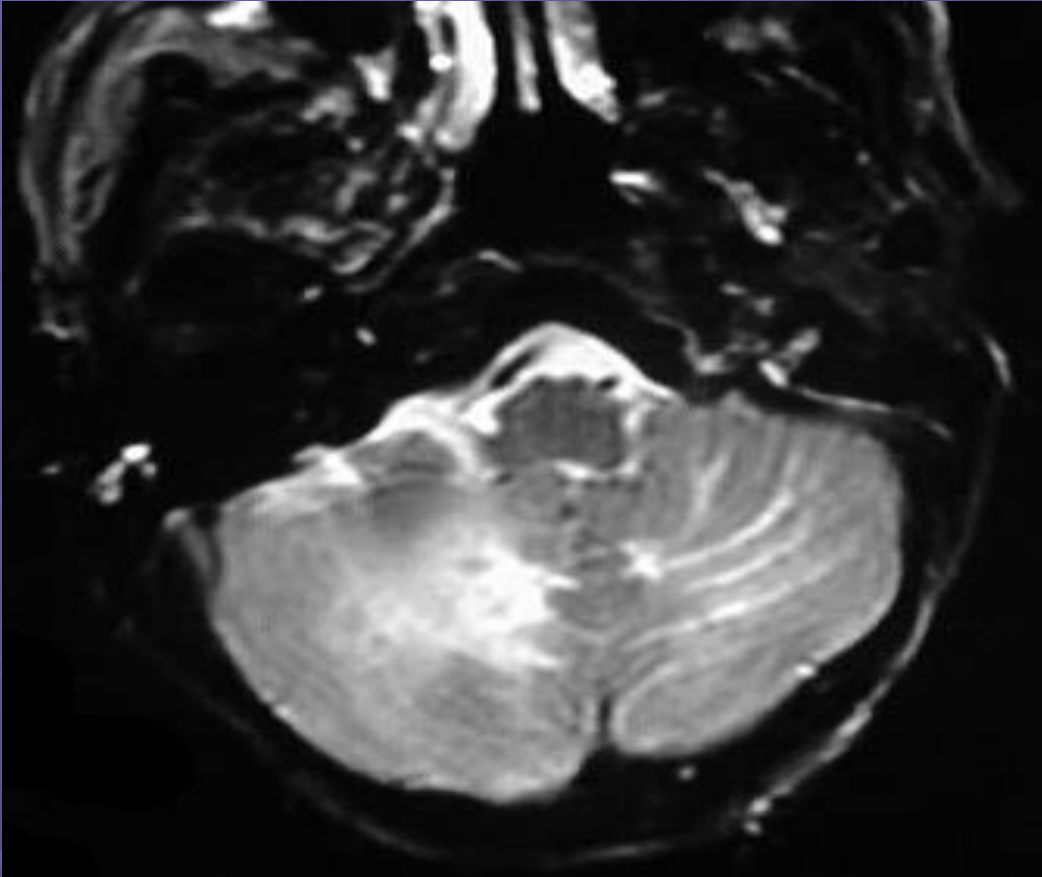


# Dysplastic gangliocytoma of the cerebellum

- Probably hamartomatous, although the exact pathogenesis remains unknown <sup>2,6</sup>.
- Even though it may not be neoplastic, it is considered a WHO grade I tumor.
- presents in young adults, although it has been encountered at all ages.
- Interestingly the genetics of childhood-onset appears different to the more common adult onset form.

# Lhermitte-Duclos disease



Dysplastic gangliocytoma of the cerebellum or diffuse hypertrophy of the cerebellar cortex. It most frequently affects young male patients.

# Lhermitte-Duclos disease

