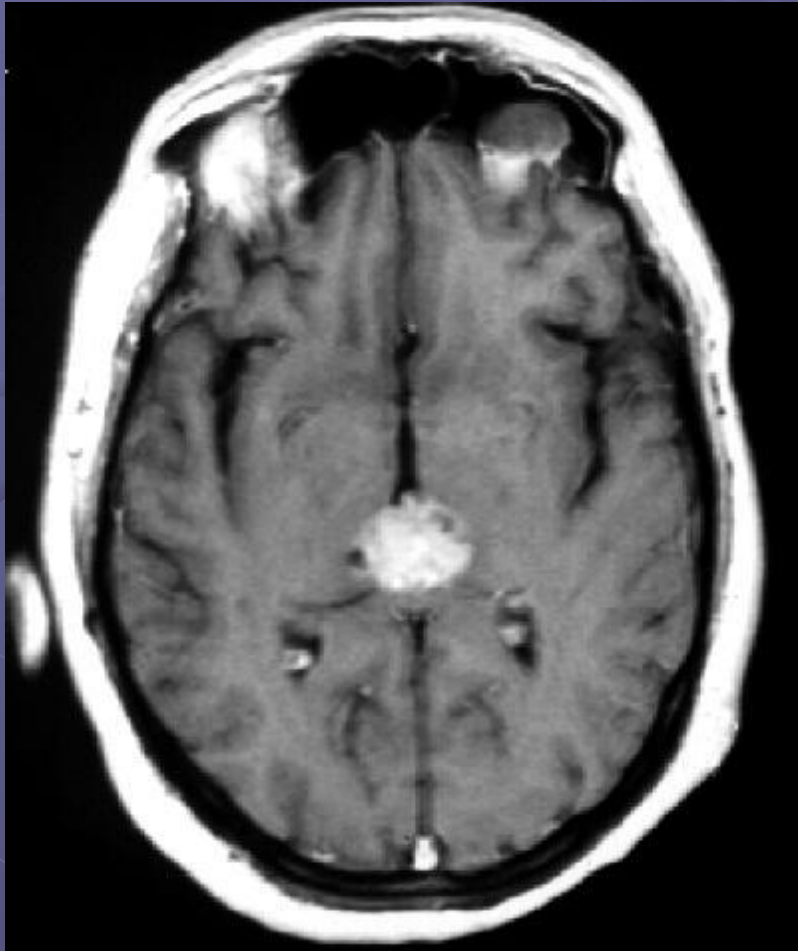


# Pineoblastoma



- Malignant
- PNET tumor
- Exhibits calcifications along the periphery of the mass as opposed to germinoma (typically central) or teratoma (dispersed).
- Dense enhancement
- Pineal tumors often occur in children and young adults
- more common in children, can occur at any age

# Pineal Region (Quadrigeminal Cistern)

- Germ Cell Tumor -
  - ("Pinealoma" is really a seminoma = germinoma = dysgerminoma = "atypical teratoma")
  - Germinoma most common, teratoma 2nd
- Pineal Parenchyma
  - (mature Pineocytoma, immature Pineoblastoma)
  - Pineocytoma only one that does not have a male predominance
- Pineal Cyst -
- Extension of Glioma (Astrocytoma)
  - from corpus callosum, tectum, or thalamus
- Meningioma
- Lipoma -
- Vein of Galen Malformation -
- Epidermoid Inclusion Cyst