

Pleomorphic xanthoastrocytoma

- Distinct type of (usually) benign supratentorial astrocytoma found almost exclusively in young adults
- **WHO grade II**
- Usually circumscribed, slow growing
- Aggressive PXA with malignant progression, dissemination occasionally occurs
- Best diagnostic clue
 - Supratentorial cortical mass with adjacent enhancing dural "tail"
 - Cyst and enhancing mural nodule typical

Pleomorphic xanthoastrocytoma

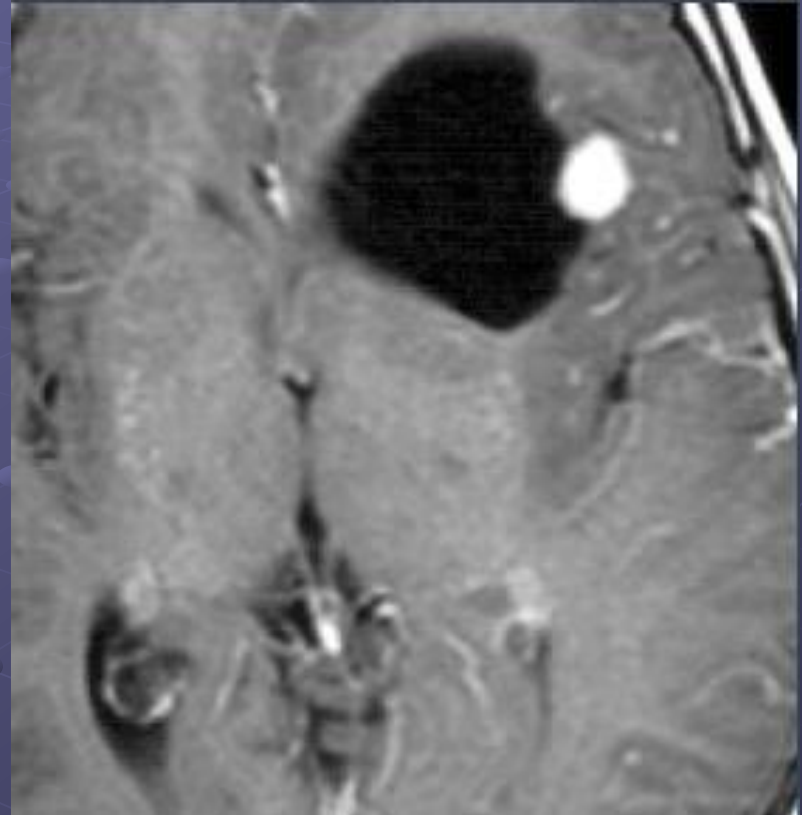
● Consider

- Cortical mass & meningeal thickening in a young adult with long seizure history? Think PXA!
- Ganglioglioma may mimic PXA clinically and by imaging

● Image Interpretation Pearls

- Meningioma-like lesion in young patient should raise suspicion of PXA

Pleomorphic xanthoastrocytoma



Top Differential Diagnoses

- **Ganglioglioma**
- **Pilocytic astrocytoma**
- **Dysembryoplastic neuroepithelial tumor (DNET)**
- **Oligodendroglioma**
- **Meningioma**
- **Low grade astrocytoma (Grade II)**