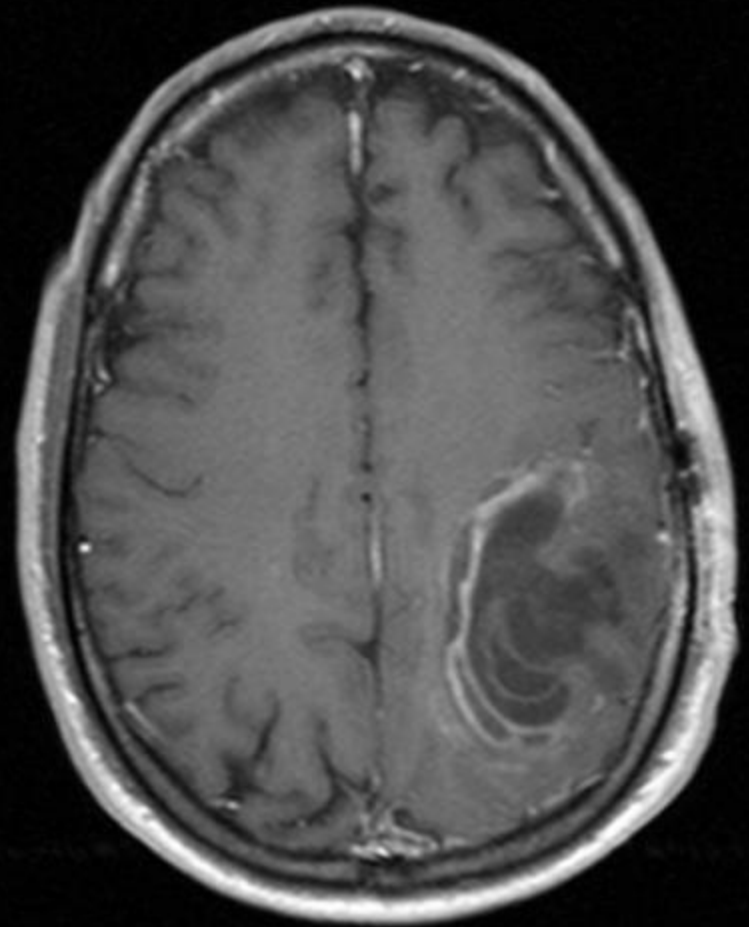
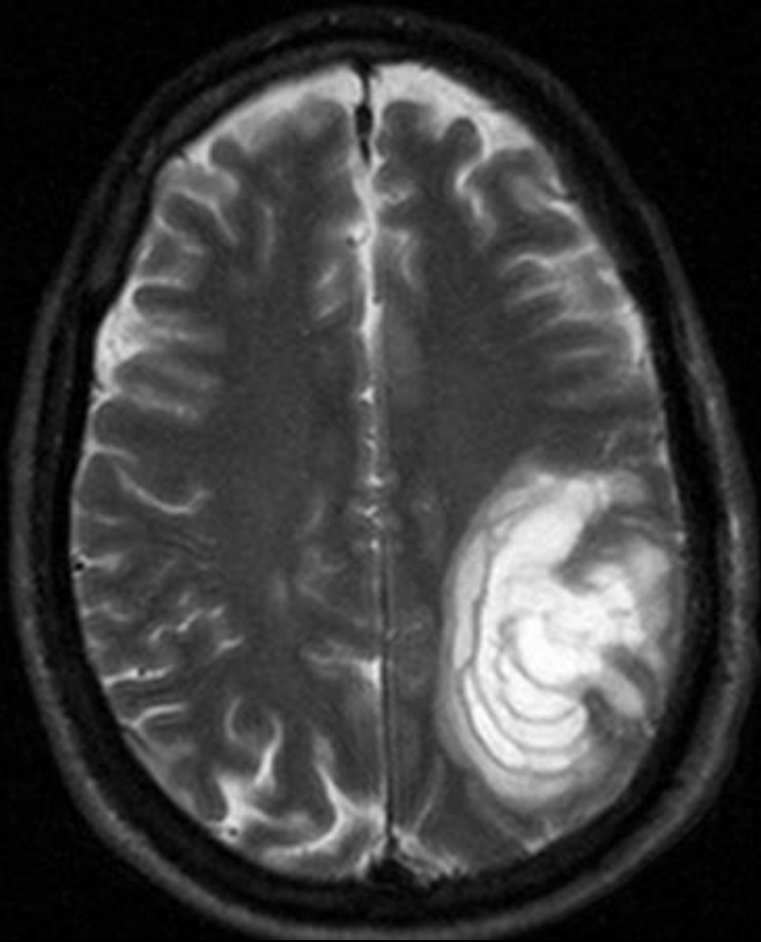


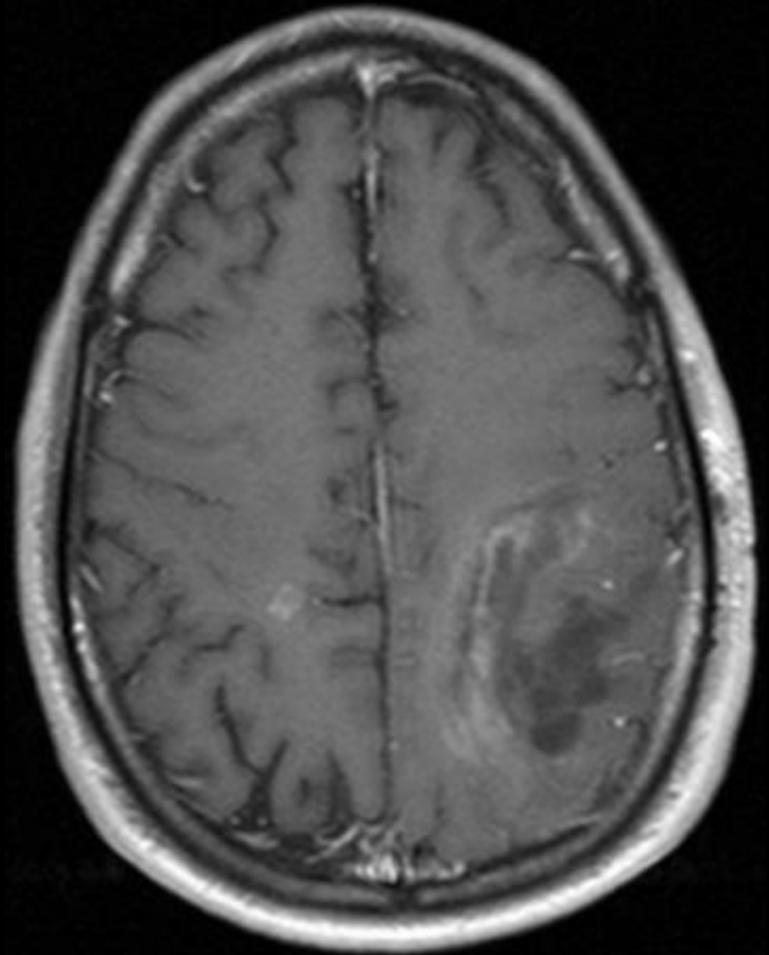
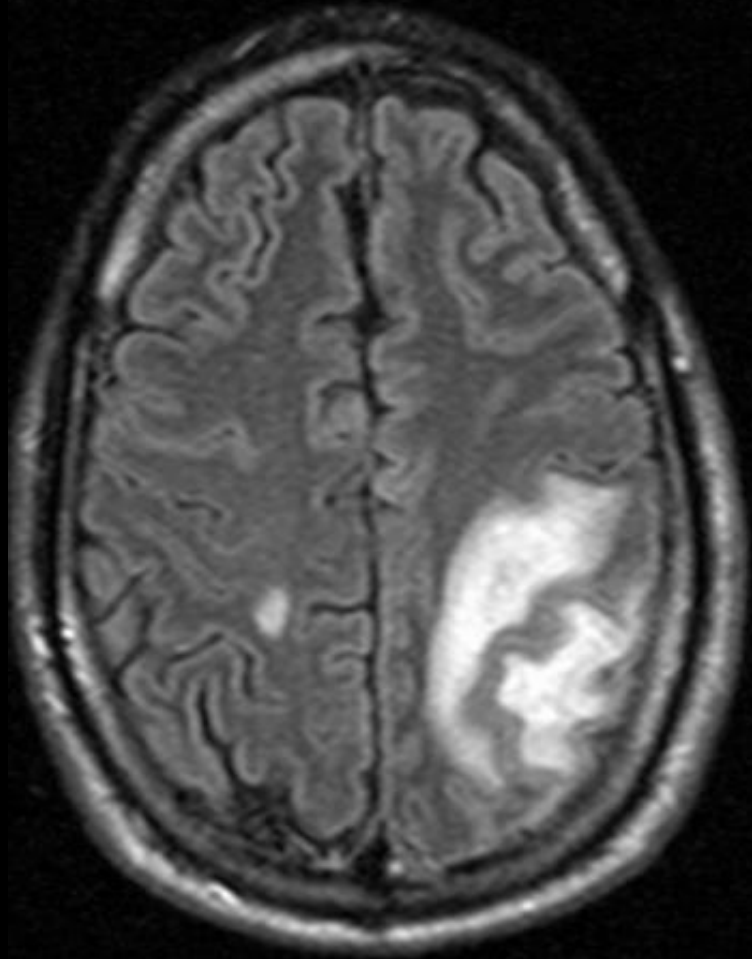
Baló's concentric sclerosis

- Rare demyelinating disease considered to be a variant of multiple sclerosis.
- White matter of the brain is destroyed in concentric layers.
- Considered similar to that of Marburg's variant of multiple sclerosis, which has a monophasic rapidly progressive course with a fatal outcome.
 - However some have a prolonged survival
- Refernece
 - <http://www.ajnr.org/cgi/content/full/22/7/1362>

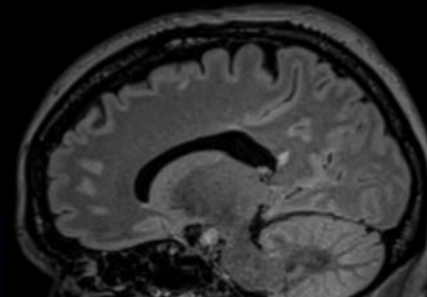
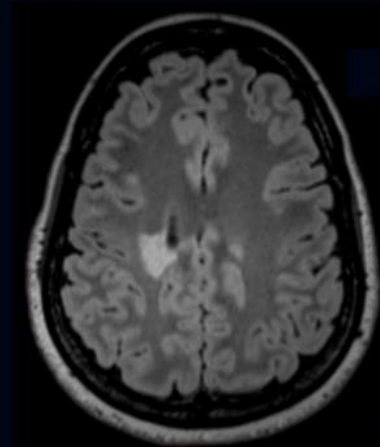
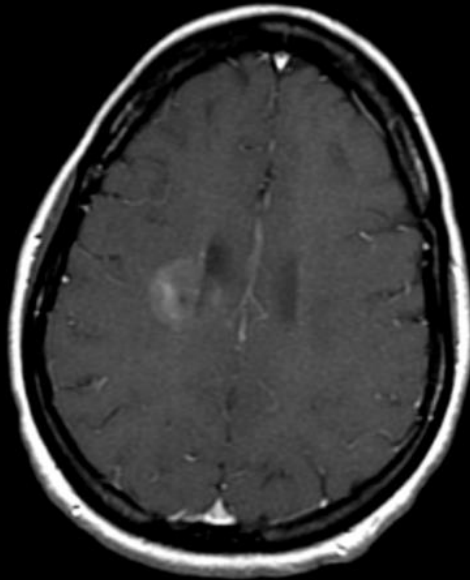
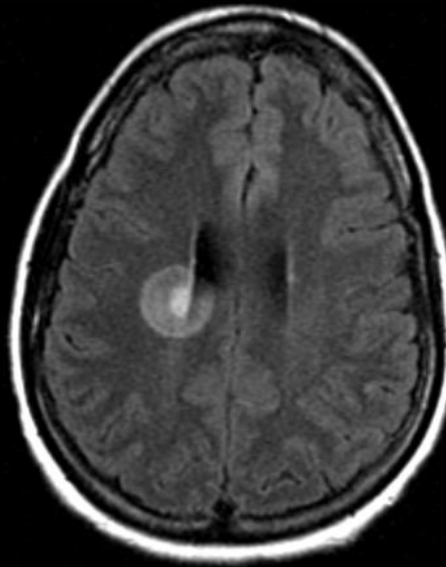
Baló's concentric sclerosis



Baló's concentric sclerosis?



Baló Concentric Sclerosis



37-year-old woman