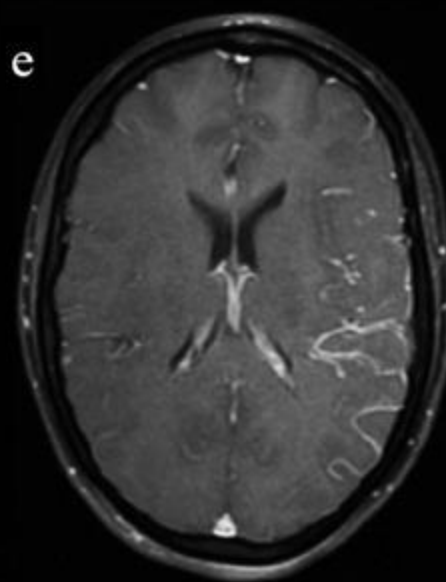
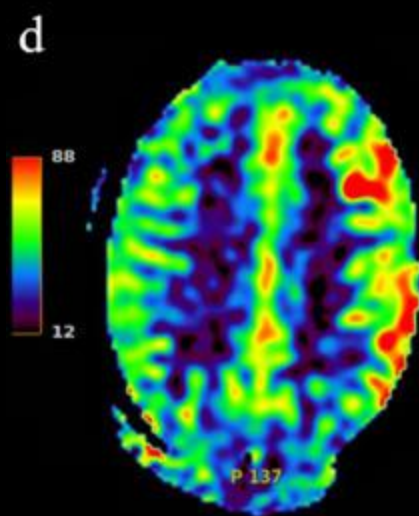
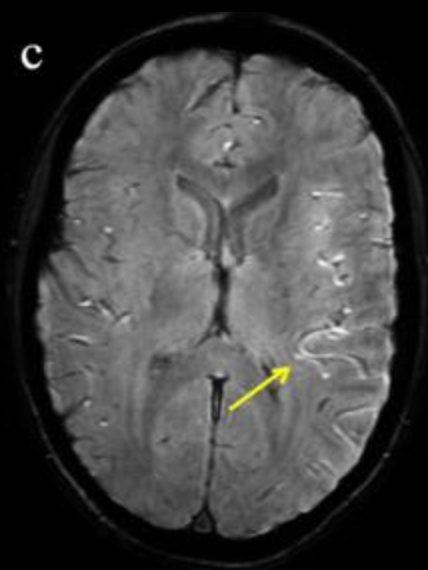
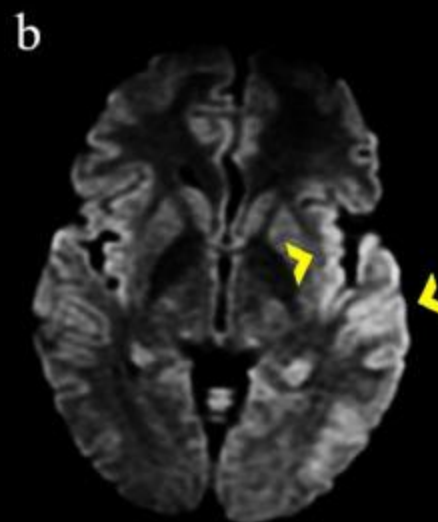
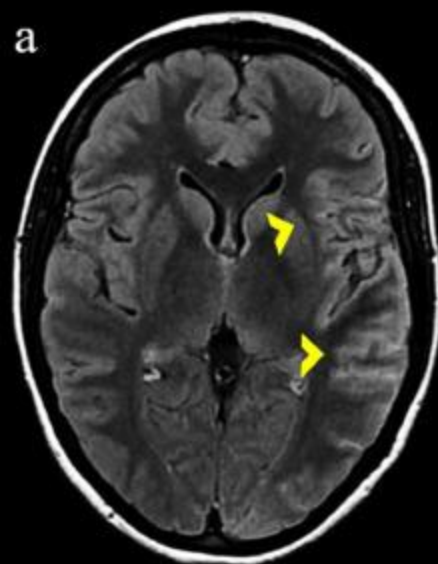
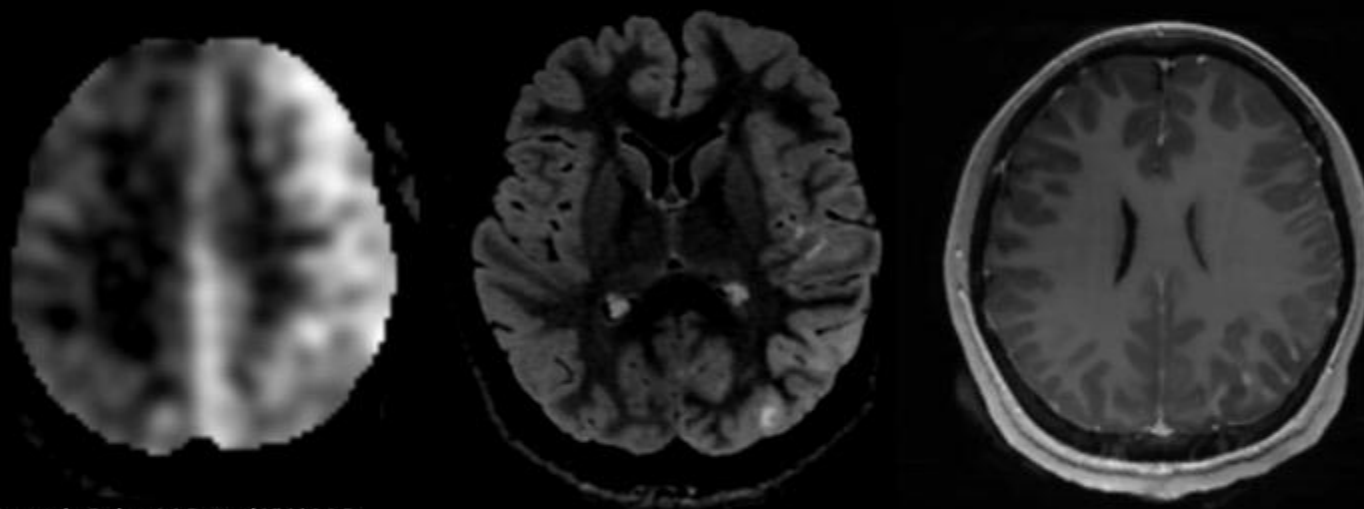


FLAIR-hyperintense lesions in anti-MOG associated encephalitis with seizures (FLAMES)

- Sub-entity of MOGAD comprising seizures and FLAIR-hyperintensities on MRI, particularly involving the cerebral cortex,
- High T2 signal cortical lesions that are usually unilateral although bilateral involvement has been described .
- These lesions can have high signal on DWI.
- Additionally, leptomeningeal abnormalities can be seen with sulcal FLAIR-hyperintensity and leptomeningeal contrast enhancement.
- Occasionally these can be the dominant features with minimal to no cortical involvement.
- The term FLAIR-variable unilateral enhancement of the leptomeninges (FUEL) has been suggested



Teenager with seizure and aphasia



Amanda Baker M.D. and Yi Li M.D.
University of California San Francisco
San Francisco, CA

Case #156