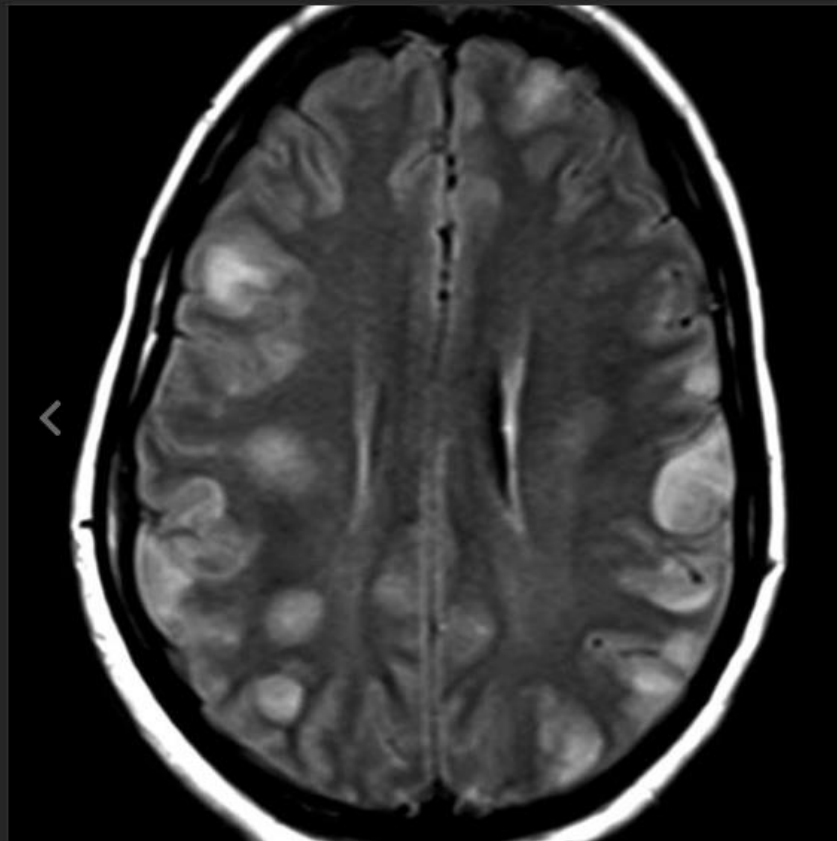


Malignant (Marburg) MS



[Download to Presentation](#)

Axial FLAIR MR shows numerous peripheral white matter and cortical lesions that exhibited robust contrast enhancement in an 18-year-old female with **malignant (Marburg) MS**. The patient presented with a 2-week history of behavioral changes and leg pain and died 3 weeks after presentation. Autopsy showed typical demyelinating pathology.

Malignant (Marburg) MS

- Acute, fulminant, or malignant multiple sclerosis
- Characterized by extensive and fulminant acute demyelination, often resulting in death within one year after the onset of clinical signs.
- Extensive confluent areas tumefactive demyelination are seen with mass effect and defined rings and incomplete ring enhancement.
- Typically is rapidly progressive, fulminant and often results in death from involvement of the brain stem or due to marked mass effect and herniation

Malignant (Marburg) MS

- Typically seen in younger patients.
- Symptoms may be preceded by fevers, and is typically monophasic

