

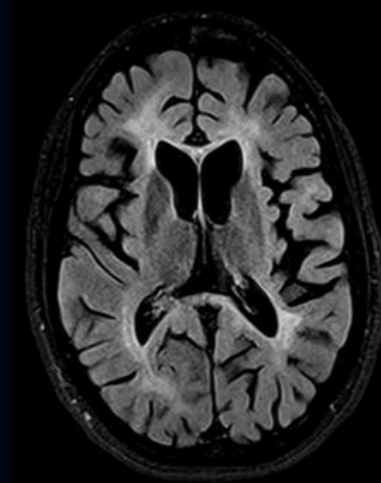
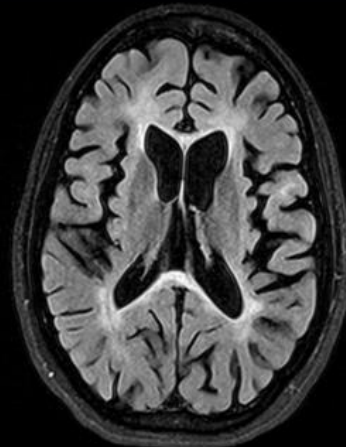
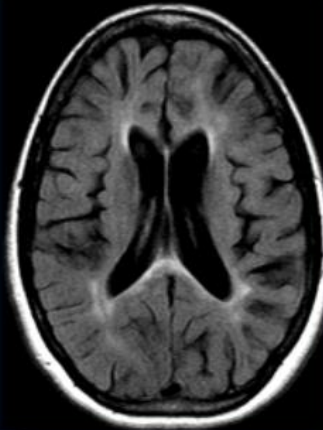
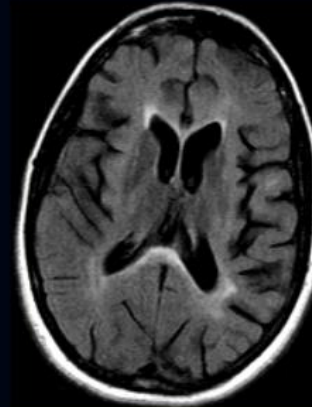
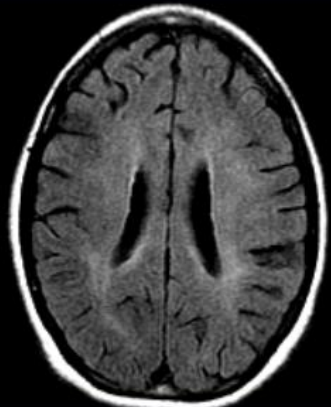
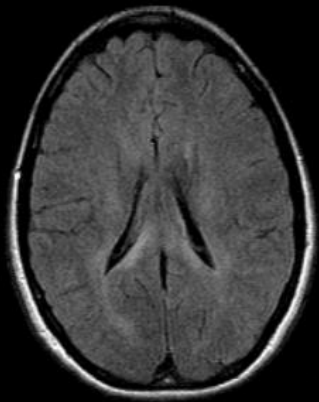
# Subacute Sclerosing Panencephalitis

- Caused by measles virus
- Progressive encephalitis occurring after silent clinical period
- Children and young adolescents

# SSPE

- Ill-defined WMH in periventricular and subcortical regions
- Usually symmetric
- No mass effect, no enhancement
- CC may be involved
- Late: Diffuse atrophy

# SSPE



Penn  
Medicine

16 yo young woman presenting with seizures.  
Patient had measles as a child.