

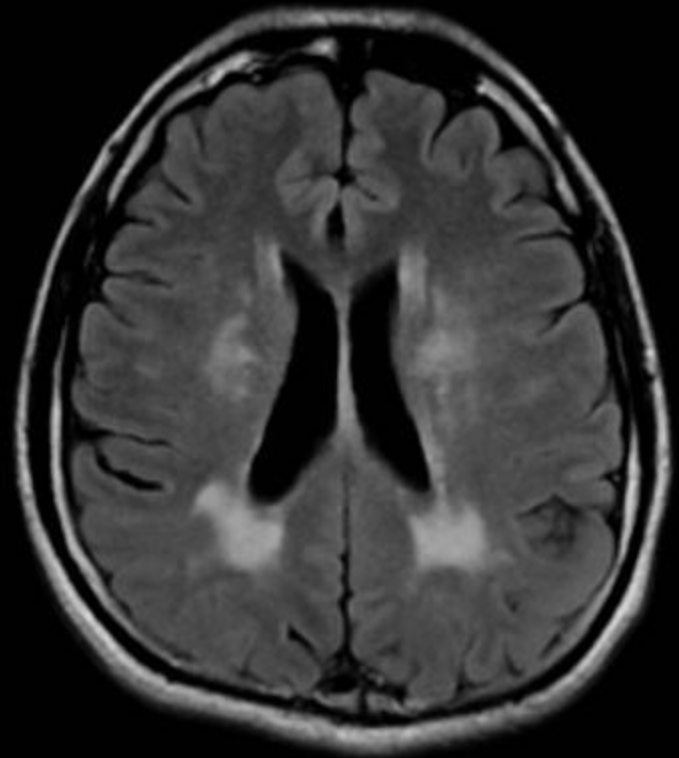
Susac syndrome

- **SICRET syndrome (also)**
- Rare syndrome classically affecting females around the 2nd to 4th decades
- Characterized by the clinical triad of acute or subacute encephalopathy, bilateral sensorineural hearing loss, and retinal arterial occlusions.

Susac syndrome

- Small lesions which are predominantly supratentorial.
- Predilection for the corpus callosum, though they can also be found in the cerebellum and midbrain.
- Callosal lesions typically involve the central fibers with relative sparing of the periphery.

15



W 1469 : L 794

Susac syndrome: DDX

- Demyelinating conditions
 - multiple sclerosis
 - acute disseminated encephalomyelitis (ADEM)
- Multiple infarcts caused by
 - Thromboembolic disease
 - CADASIL
 - vasculitides