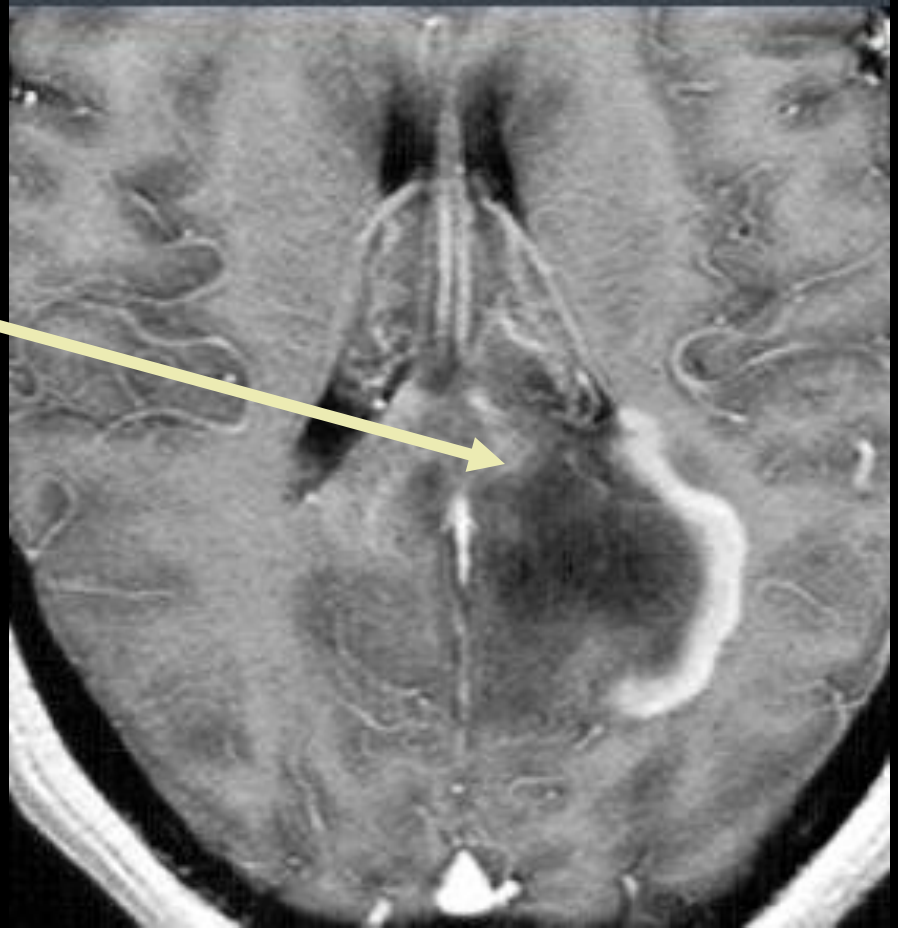


Tumefactive” demyelination

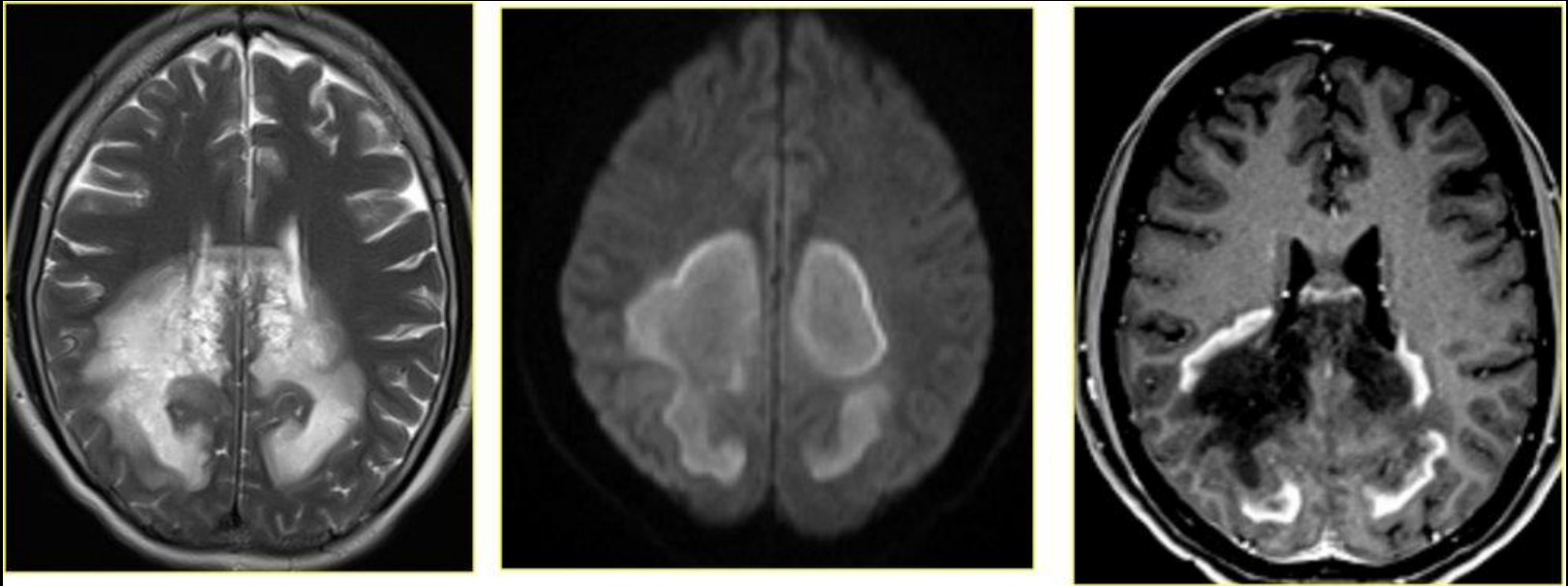
- Incomplete rim-enhancement (“open ring”) is specific.
- Perfusion-weighted imaging: $rCBV < 2$
- Spectroscopy generally NOT helpful
 - Can be aggressive
 - May have restricted diffusion at ring
- Plaques can grow
- MS can get PML

Tumefactive MS

- “Ring Sign”
- Incomplete ring commonly seen in demyelination



Tumefactive demyelination



- “Ring Sign”
- Incomplete ring commonly seen in demyelination

Tumefactive demyelination

