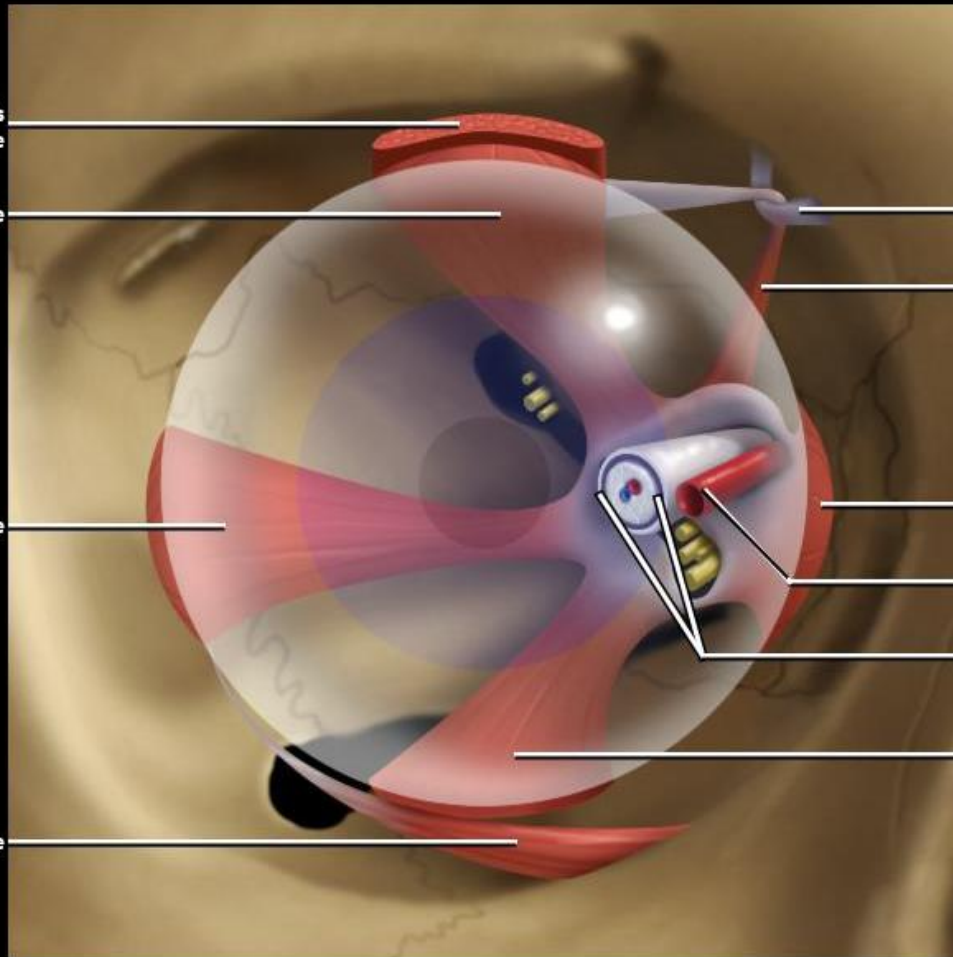


Levator palpebrae superioris muscle

Superior rectus muscle

Lateral rectus muscle

Inferior oblique muscle



Trochlea

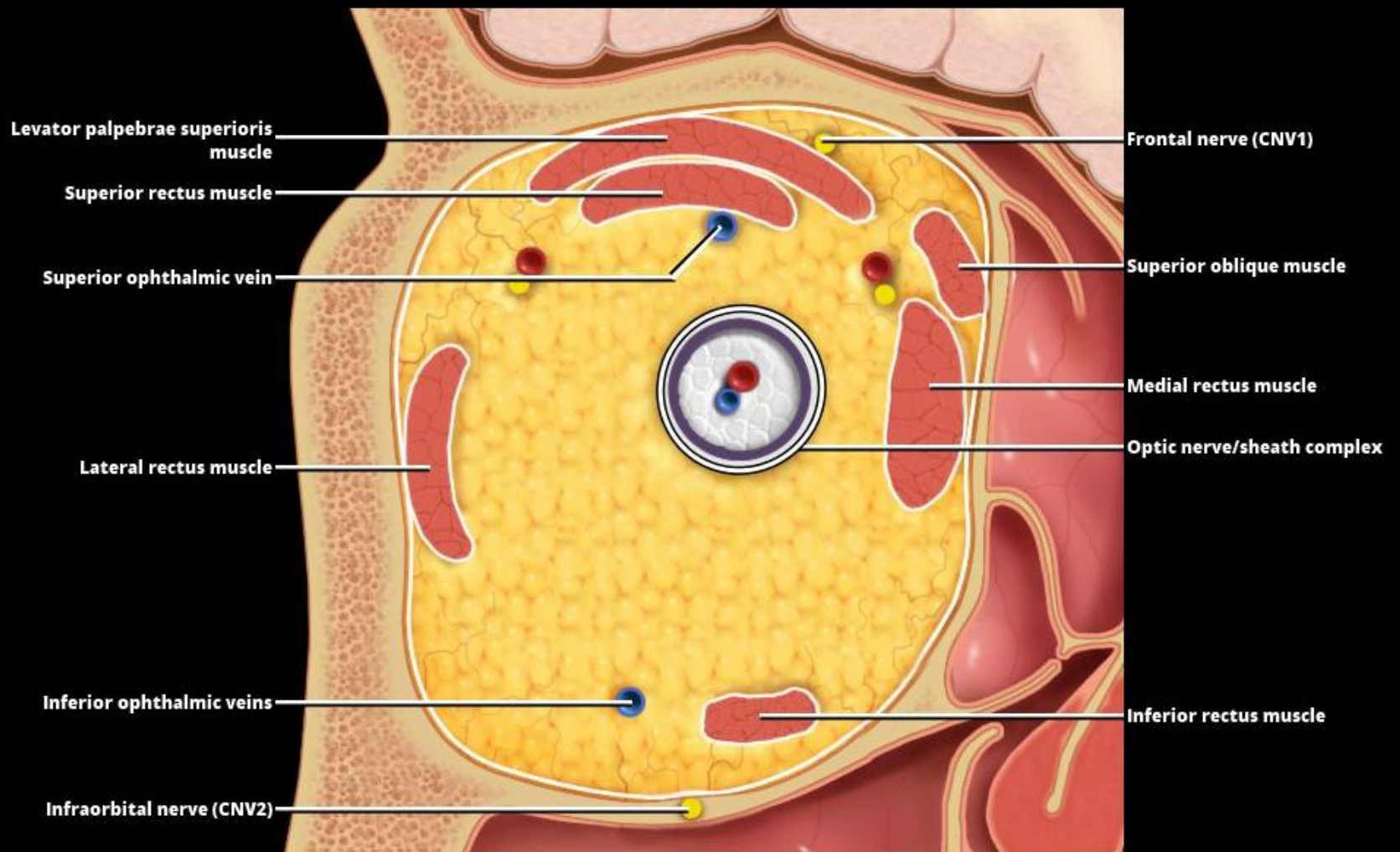
Superior oblique muscle

Medial rectus muscle

Ophthalmic artery

Optic nerve/sheath complex

Inferior rectus muscle



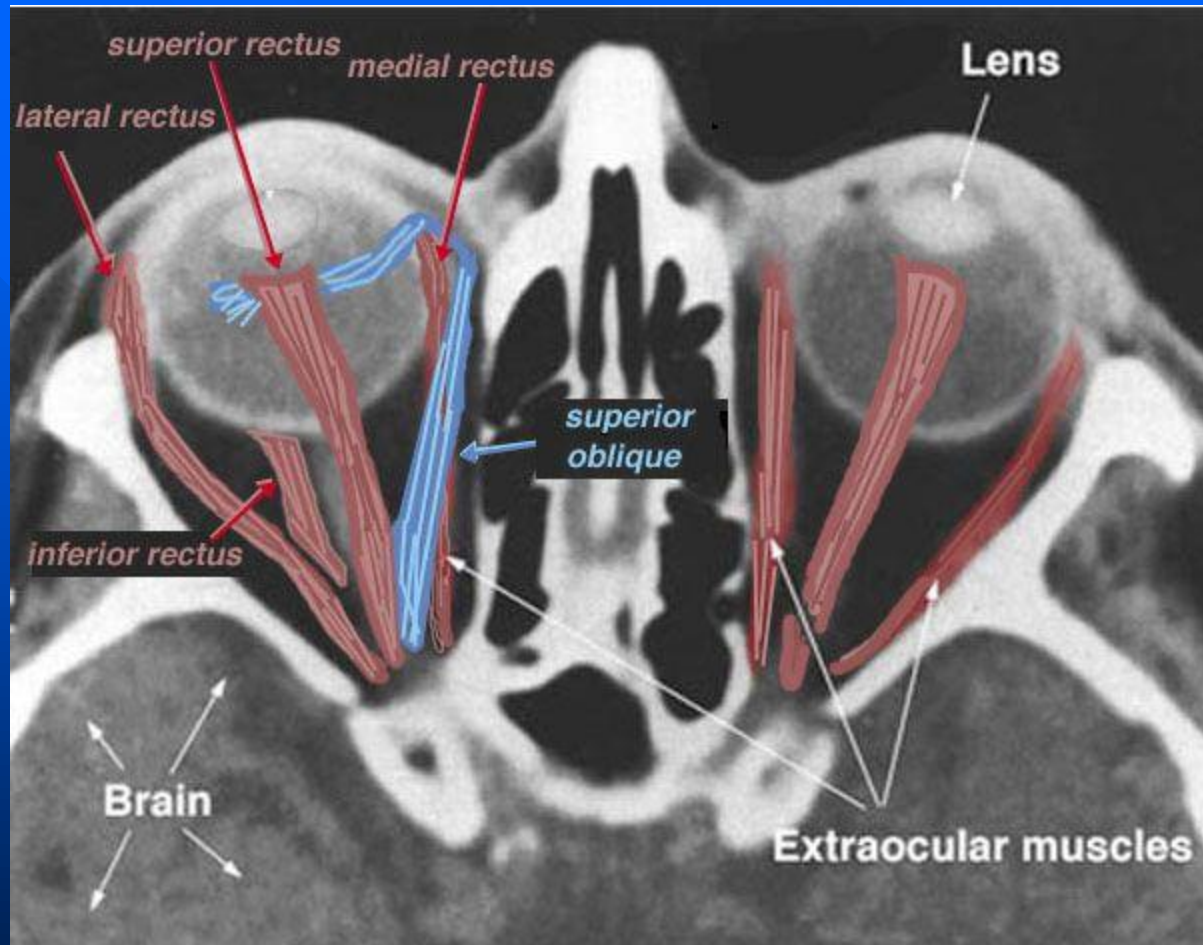
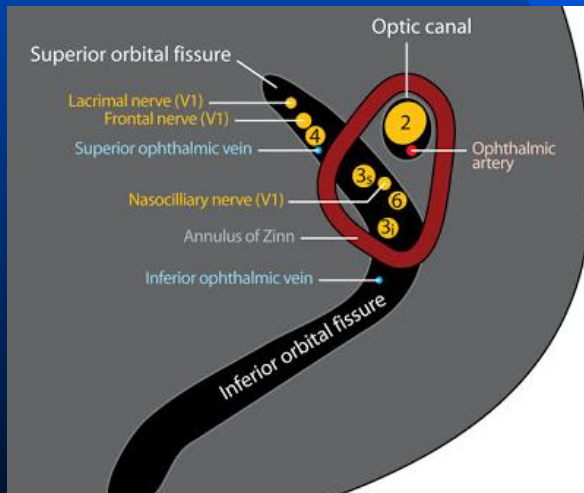


Fig. 3. CT Horizontal transverse scan at the plane of the brain, orbits and nose of the human head.

Annulus of Zinn

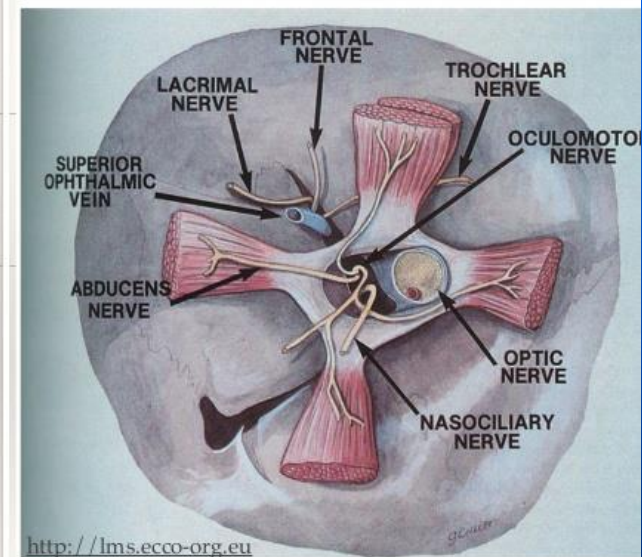
- Fibrous ring that overlies the optic canal and the medial aspect of the superior orbital fissure and is continuous with the dura of the middle cranial fossa.
- It is divided into the superior Lockwood tendon and the inferior tendon of **Zinn**.

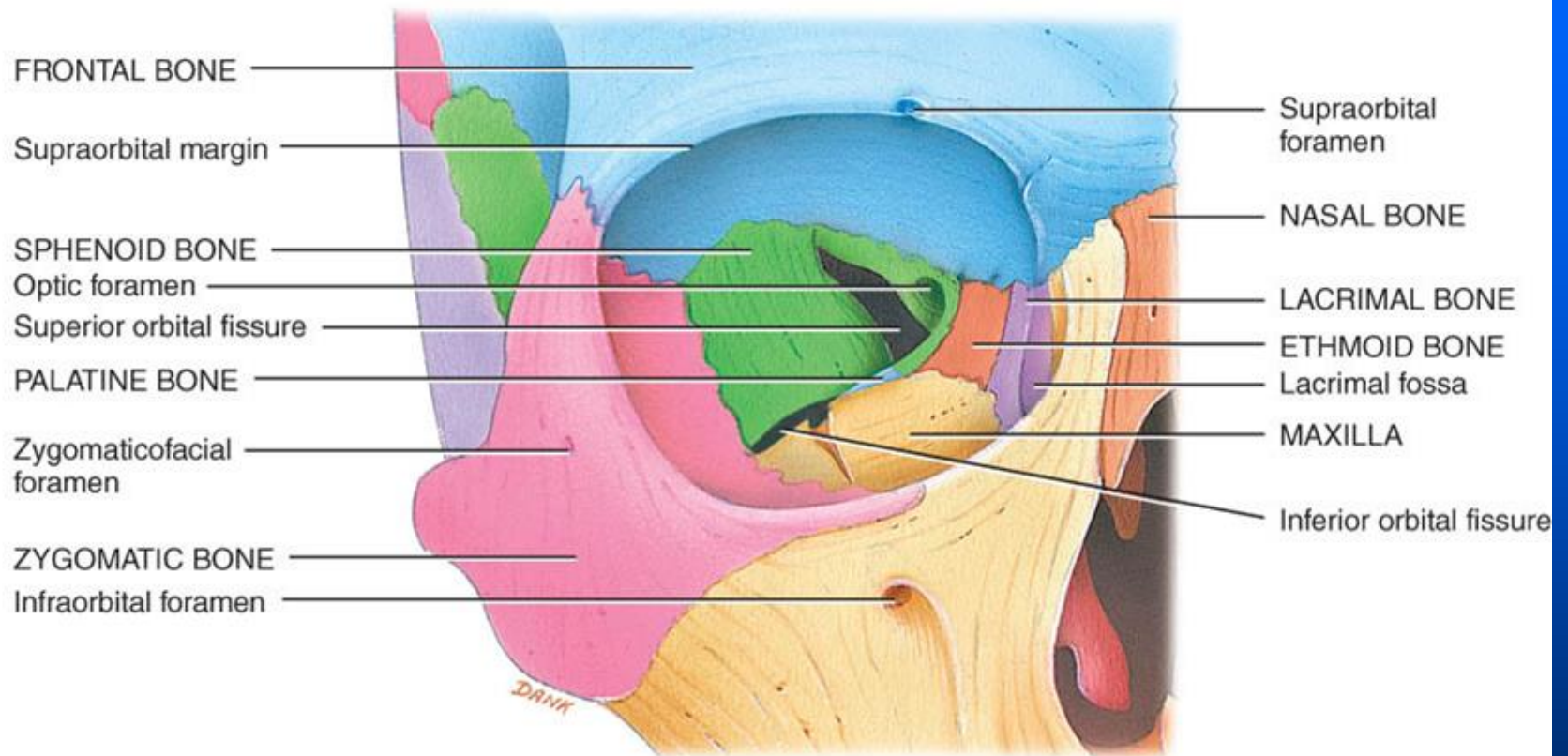


Orbital Apex

Annulus of Zinn
Nerve Supply

Figure 2. Right superior orbital fissure viewed anteriorly





Most common malignancy

- Globe: Retinoblastoma, ocular melanoma
- Lacrimal gland: Lacrimal carcinoma, lymphoma
- Optic pathway: Optic pathway glioma