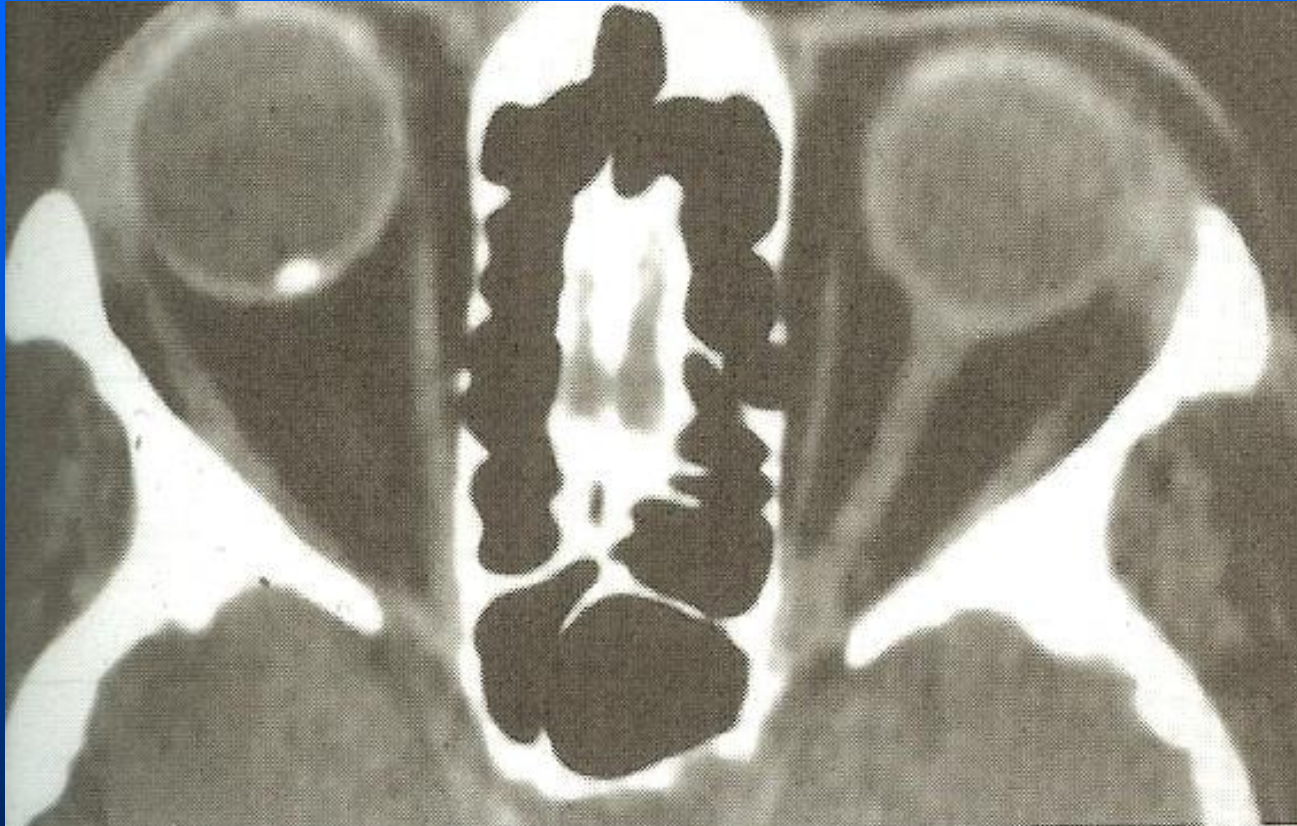


# Astrocytic Hamartoma

- Benign retinal tumor that is composed of glial cells, predominantly **astrocytes**.
- It is frequently associated with tuberous sclerosis complex (TSC) or Bourneville's disease, a rare genetic syndrome.
- Rarely in patients with neurofibromatosis

# Astrocytic Hamartoma



Associated with **NF** and **TS**

**Choroidal osteoma** looks the same (young females)

Gantry: 0°  
Time: 1000 ms  
Slice: 4 mm  
Couch: -165  
Pos: HFS

