

Choroidal Metastasis

- Breast and lung primaries most common
 - Located on temporal side of macula
 - breast carcinoma
 - lung carcinoma
 - gastrointestinal tract carcinomas
 - genitourinary tract carcinomas
 - cutaneous melanoma
 - neuroblastoma
- Extraocular orbital metastases from melanoma, thyroid, kidney, GI

Metastasis

GLOBE

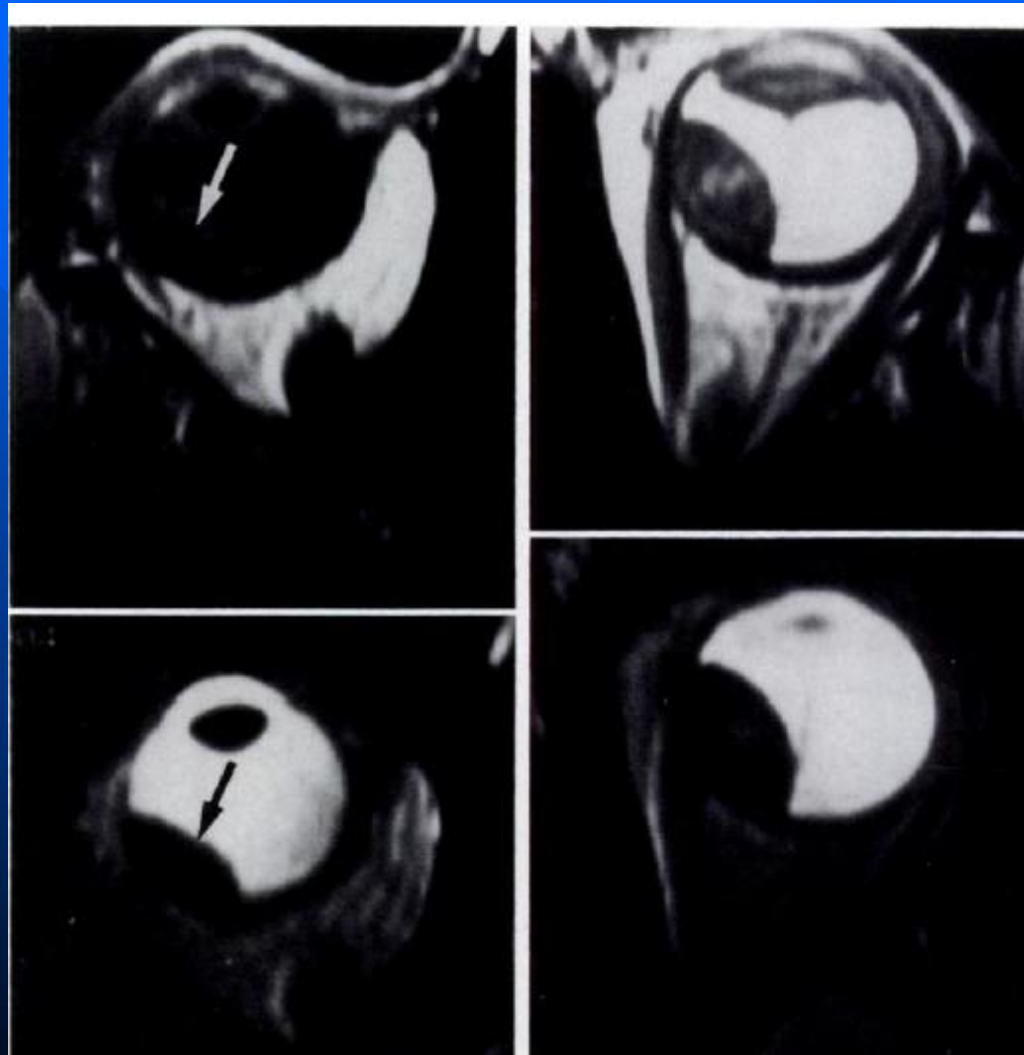
UVEAL METASTASIS:

Lung and breast Ca are the most common primaries.
50% of the patients have no known primary.

Imaging: Usually small and multiple masses.
Subretinal fluid common.

1:49

Choroidal Metastasis



Choroidal Metastasis from lung cancer

