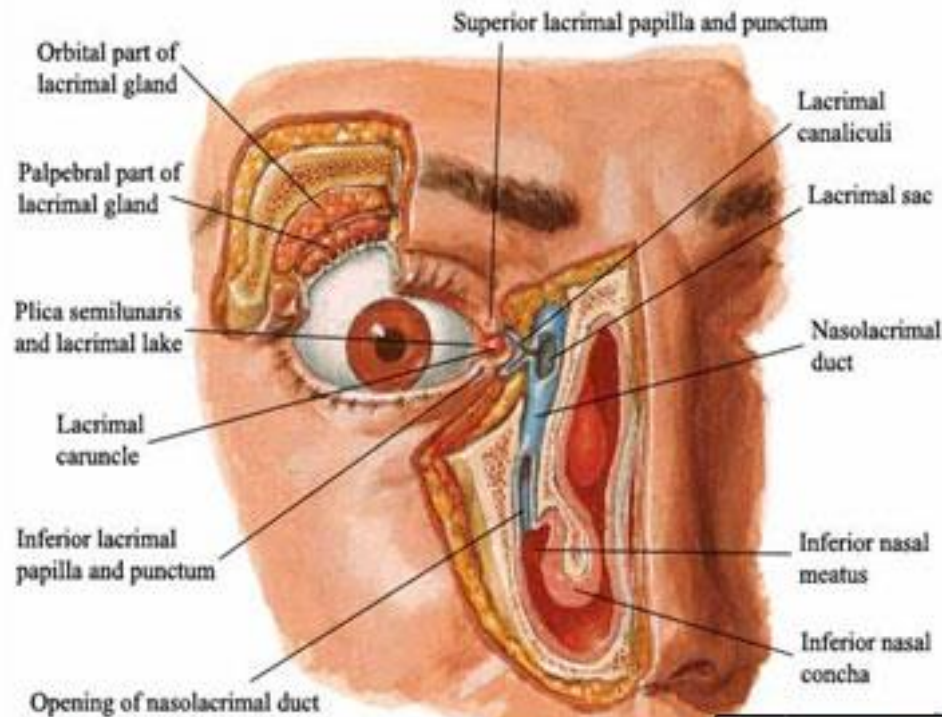


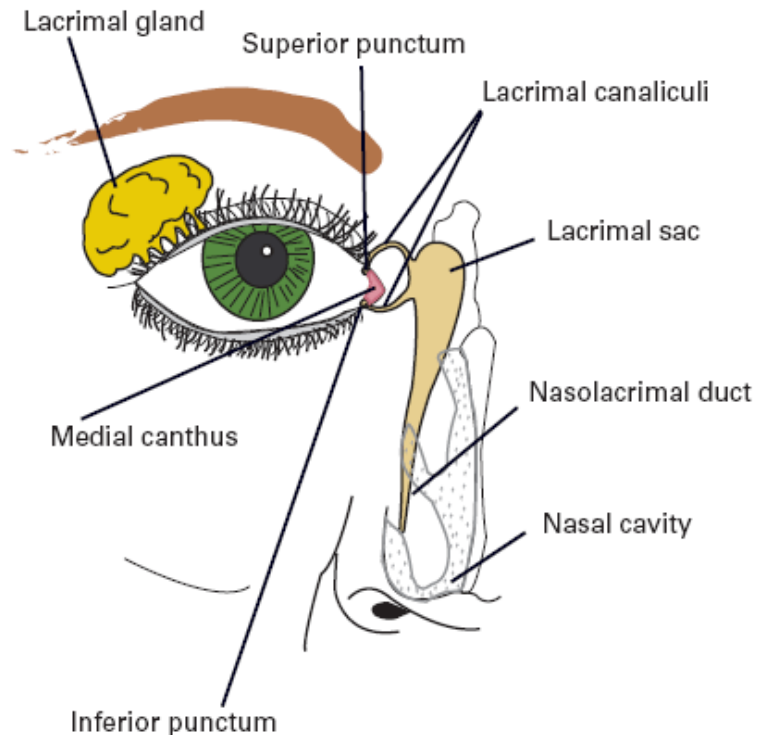
Nasolacrimal Duct Apparatus

Lacrimal apparatus

Dissection



■ Figure 2. Tear Drainage System



Lacrimal sac.

- From the lacrimal sac secretions travel inferiorly to the nasal lacrimal duct, which drains under the inferior terminate into the nose.
- Dacryocystoceles
 - In children congenital obstructions of the valves in the lacrimal duct can lead to cystic areas medially in the orbit.
- Adults obstruction is more often due to strictures from ethmoid sinusitis or stones blocking the nasolacrimal duct.
 - This will result in epiphora or increased tearing.
 - Drainage can be improved with balloon dilatation.