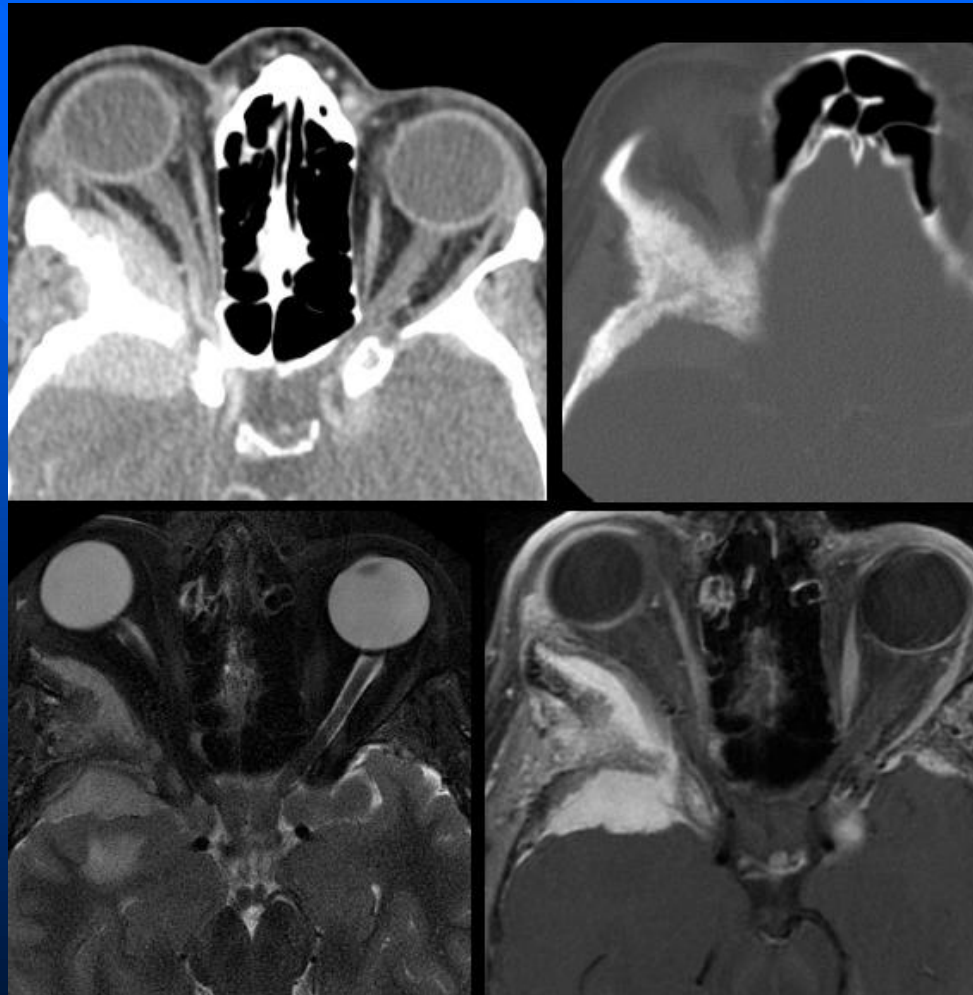


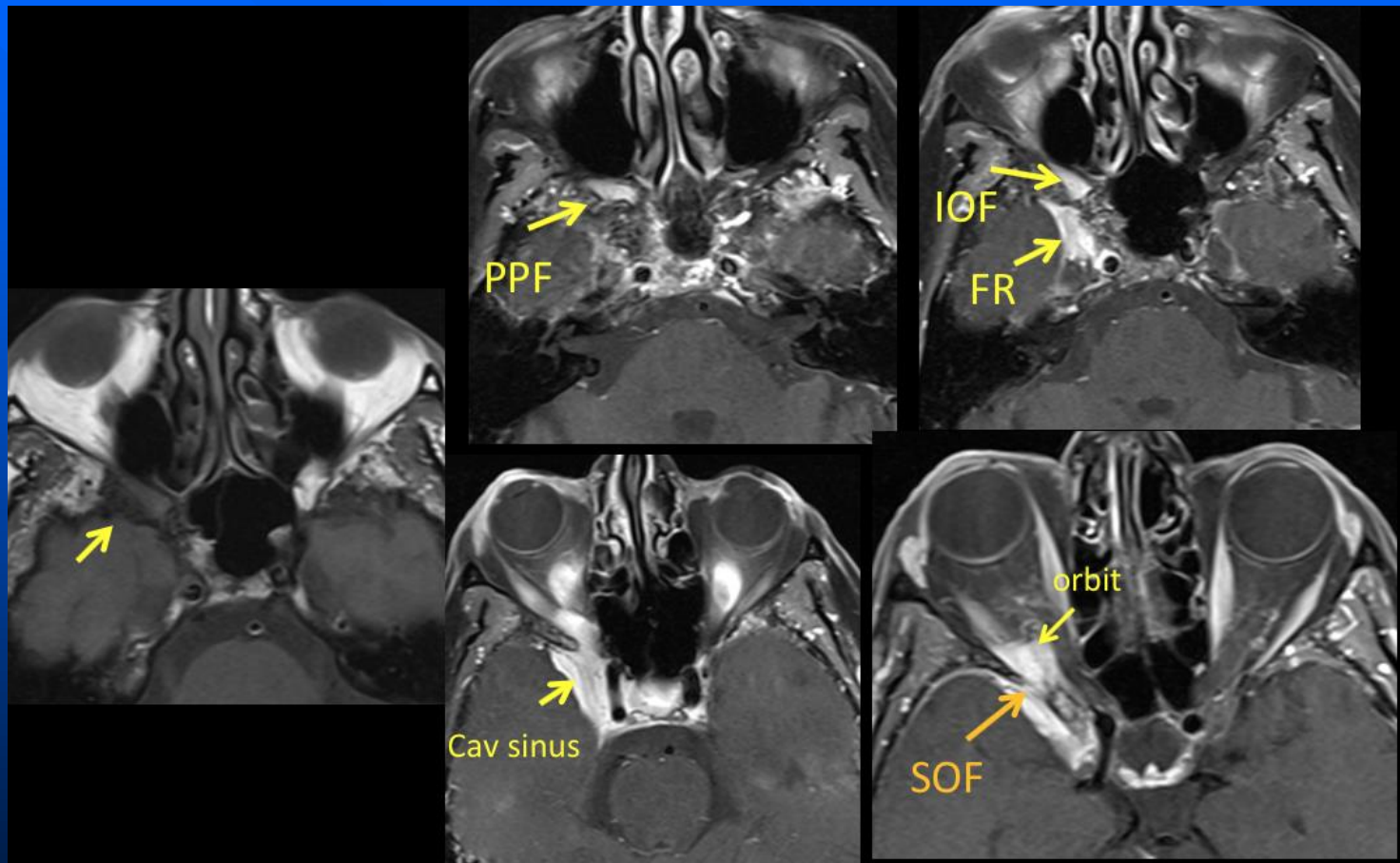
# Intraosseous meningioma

- Meningiomas in general there is recognized female predilection.
- Rare tumor and account for less than 1% of all osseous tumors.
- Trapped arachnoid meningotheial cap cells within cranial sutures during development.
- Despite this theory only a small proportion of intraosseous meningiomas actually occur in association with a skull suture
- Majority ~65% are osteoblastic while ~35% are osteolytic<sup>3</sup>. Due to this imaging appearances are non-specific.

# Meningioma

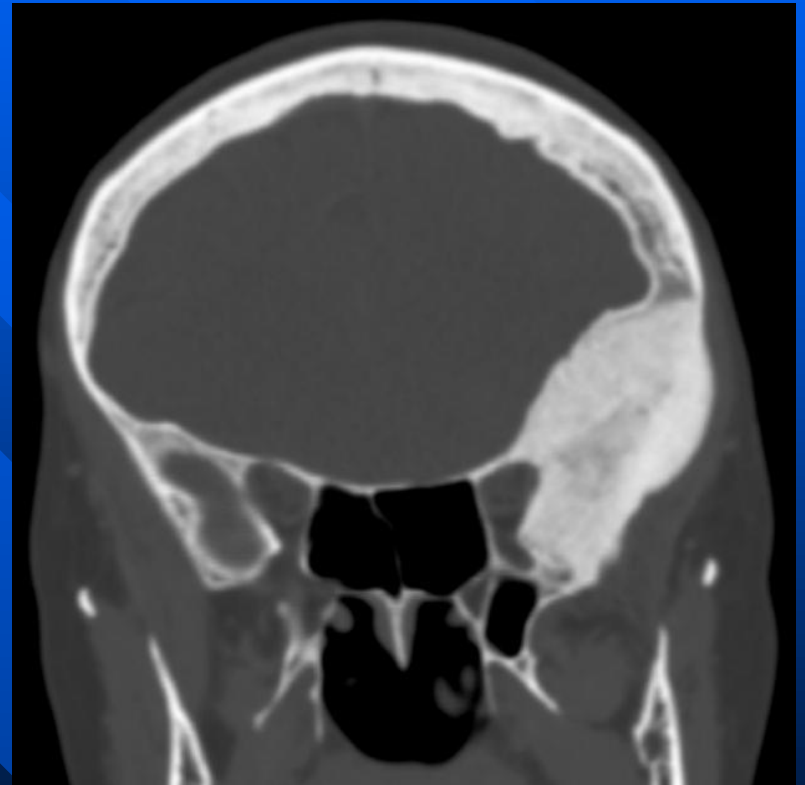


# Meningioma



# Imaging

- majority ~65% are osteoblastic while ~35% are osteolytic



# Intraosseous meningioma

